

# WATER DISTRIBUTION SYSTEM

to serve

## FALCON FALLS 2ND ADD.

### PH. II

CITY OF WICHITA, KANSAS

James L. Armour, P.E. City Engineer

Project Number

**448-90107**

O.C.A. Number

**735385**

#### GENERAL NOTES:

- Contractor will be required to provide notice to utility companies a minimum of forty-eight (48) hours prior to any excavation, as follows:  

|                 |          |
|-----------------|----------|
| Kansas One-Call | 687-2470 |
|-----------------|----------|

The Contractor must notify the following in case of an emergency:

|                                    |                |
|------------------------------------|----------------|
| Cox Communications                 | 262-4270       |
| Kansas Gas Service                 | 1-888-482-4950 |
| Westar Energy                      | 383-8650       |
| Aquila Energy                      | 1-800-303-0357 |
| SBC                                | 268-2245       |
| City of Wichita Water Dept.        | 268-4563       |
| City of Wichita Sewer Maint.       | 268-4024       |
| City of Wichita Storm Sewer Maint. | 268-4090       |
| City of Wichita Traffic Maint.     | 268-4034       |
| Conoco Phillips Pipeline Co.       | 1-877-267-2290 |
| Southern Star Pipeline Co.         | 529-6600       |
| Kinder-Morgan Pipeline Co.         | 1-888-844-5658 |
- Utility service lines, poles, valve boxes, meters, and etcetera are to be adjusted as necessary by others prior to construction unless the plans specifically call for their adjustment by the Contractor or unless the plans specifically identify a utility to be adjusted by its owner during construction. Existing utilities and their location, as shown on the plans, represent the best information obtainable for design. The Contractor will be required to work around existing utilities within the right-of-way which do not conflict with proposed construction.
- Rubble from the removal of miscellaneous structures and excess excavation which is to be wasted shall be disposed of on sites to be provided by the Contractor. These sites shall be approved by the Engineer as to suitability, appearance and site location. Locations, in the opinion of the Engineer, that will leave an unsightly appearance will not be approved. All disposal sites must be approved by the Kansas Department of Health and Environment. Material either stockpiled or disposed of in a flood plain would require a Kansas State Board of Agriculture permit. Any material dumped in waters of the United States or wetlands is subject to U.S. Corps. of Engineers permitting regulations. Any material buried or stockpiled beyond approved construction limits would require additional archaeological investigations unless buried in a previously approved borrow location.
- Trees and shrubs in public right-of-way which are in direct conflict with proposed new construction shall be removed by the Contractor with the Engineer's approval. Trees and shrubs which are not in direct conflict with proposed new construction shall be saved and protected from damage.
- The Contractor shall give all property owners and/or tenants of developed property abutting the construction of this project a minimum of ten (10) days notice prior to start of construction.
- The Contractor shall be responsible for preserving property irons. The Contractor will be required to re-establish any property irons which are damaged or destroyed by his construction operations. Such irons shall be re-established by a licensed land surveyor in accordance with state laws.
- All existing and proposed erosion control measures including silt fencing, erosion control mat, straw bales, inlet barriers, and const. entrance shall be maintained throughout construction by the contractor and until project is accepted by the City of Wichita. The on-site engineer shall complete weekly reports on the status of erosion control measures. The contractor shall be required to comply with maintenance and/or replacement of erosion control measures as determined by the on-site engineer until project is accepted by City of Wichita. Maintenance and/or replacement of erosion control measures to be paid by L.S. bid item "Site Clearing & Restoration".
- All water mains and appurtenances shall be installed in accordance with City of Wichita, Kansas Standard Specifications for Water Main Installations No. 14533.
- Opening and closing of water valves shall be done slowly to prevent damage to the water distributions system from water hammer. All valves closed by the contractor must be reopened as new construction permits. Project inspector must ascertain that any valve closed by the Contractor is reopened. Contractor will be permitted to operate water valves only when the project inspector assigned to the project is present.
- Area will be seeded with the street project.
- The developer for this project is Jay Russell, (316) 722-2417

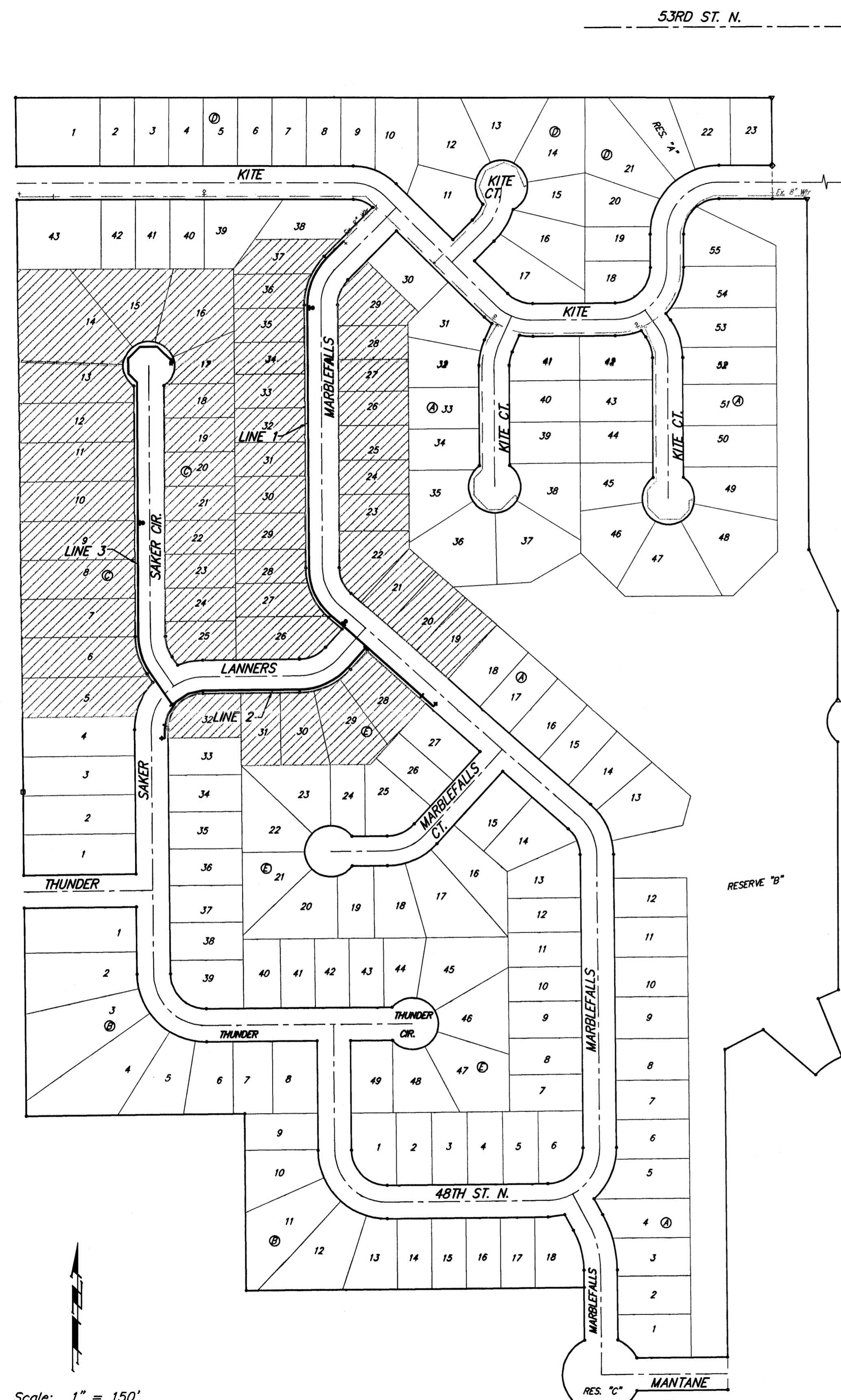
#### BENCHMARKS

BM #1: "□" CL face of catch basin, west side of Lot 4, Block 5, Falcon Falls Addition. Elev. = 1352.47 MSL

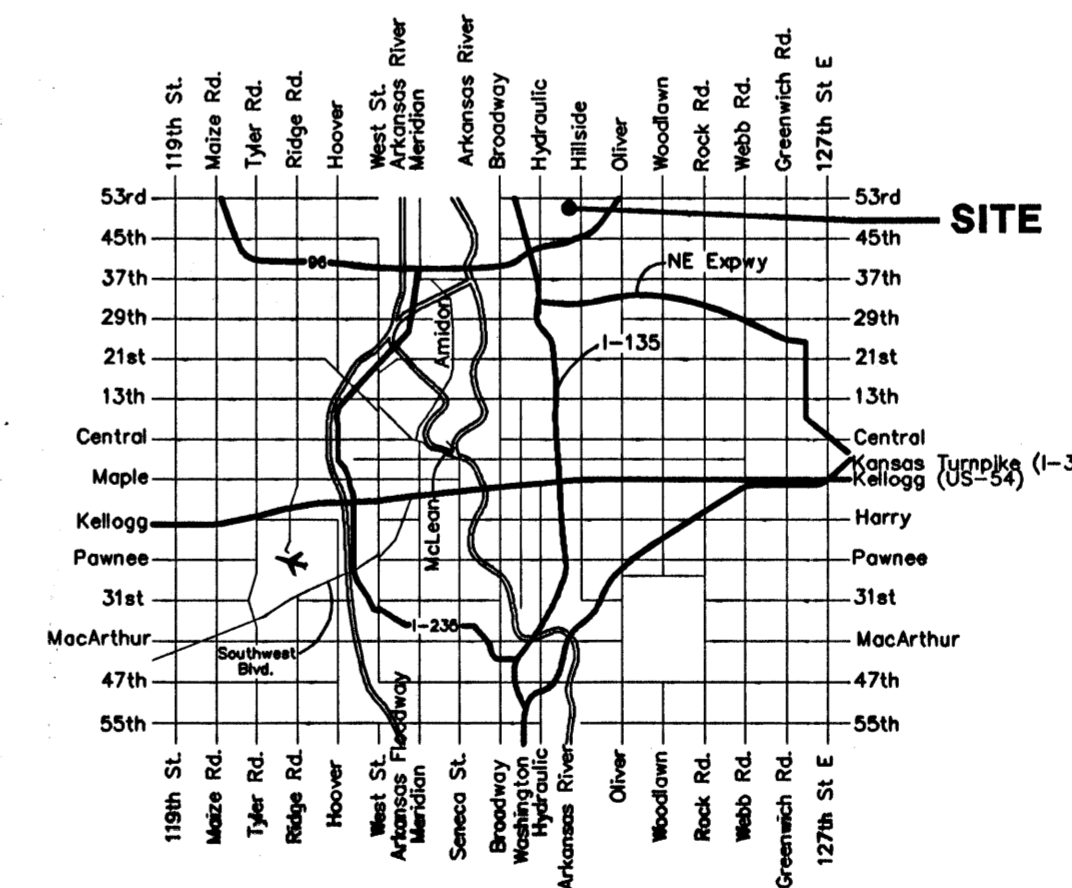
BM #2: "□" south end of the south curb return at Kite and Peregrine, Falcon Falls Addition. Elev. = 1359.85 MSL

#### SHEET INDEX

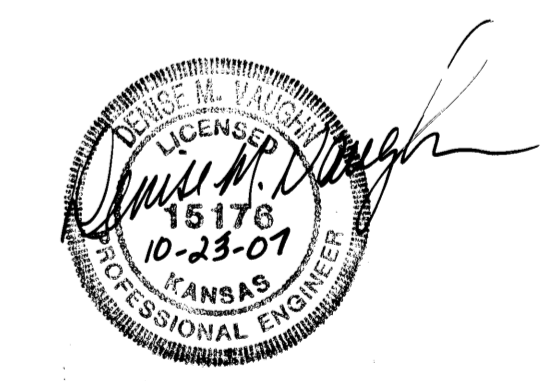
|                        |     |
|------------------------|-----|
| Title Sheet            | 1   |
| Standard Water Details | 2   |
| Line 1                 | 3   |
| Line 2                 | 4   |
| Line 3                 | 5   |
| Erosion Control BMP's  | 6-9 |
| Erosion Control Plan   | 10  |
| Coordinate Sheet       | 11  |
| Copy of Plat           | 12  |



Benefit District



Vicinity Map



Baughman Company, P.A. 315 Ellis St. Wichita, KS 67211 P 316-262-7171 F 316-262-0144  
 ENGINEERING | SURVEYING | PLANNING | LANDSCAPE ARCHITECTURE