

BENCHMARKS:
 BM #1: "□" CL face of catch basin, west side of Lot 4, Block 5, Falcon Falls Addition. Elev. = 1352.47 MSL
 BM #2: "□" south end of the south curb return at Kite and Peregrine, Falcon Falls Addition. Elev. = 1359.85 MSL

Curve #1
 Curve Data Based on Waterline
 Rad. = 126' Delta = 45°00'00" Tangent = 52.19'
 Arc = 98.96' L.C. = 96.44' Def/Ft. = 13.64188 Min.

Station	FACE CHORD LENGTHS		Defl.	T. Defl.
	Arc	6' Rt.		
0+47.00	-	-	0°00'00"	0°00'00"
0+50.00	3.00'	3.14'	0°40'55"	0°40'55"
0+75.00	25.00'	26.15'	5°41'03"	6°21'58"
1+00.00	25.00'	26.15'	5°41'03"	12°03'01"
1+25.00	25.00'	26.15'	5°41'03"	17°44'04"
1+45.96	20.96'	21.93'	4°45'56"	22°30'00"

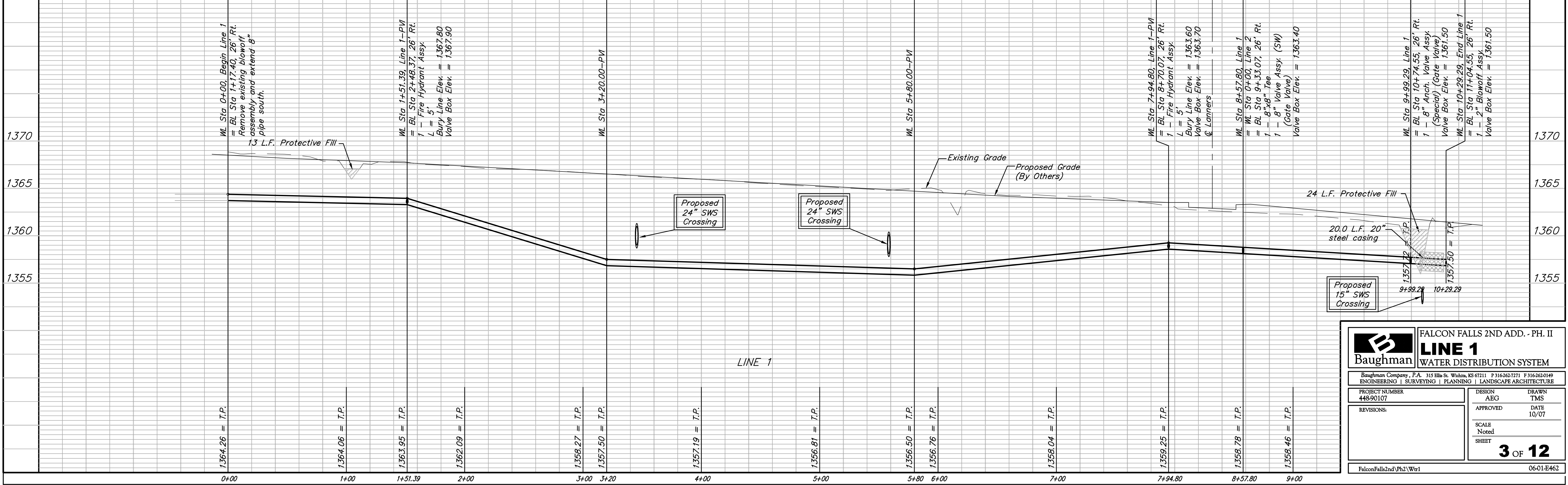
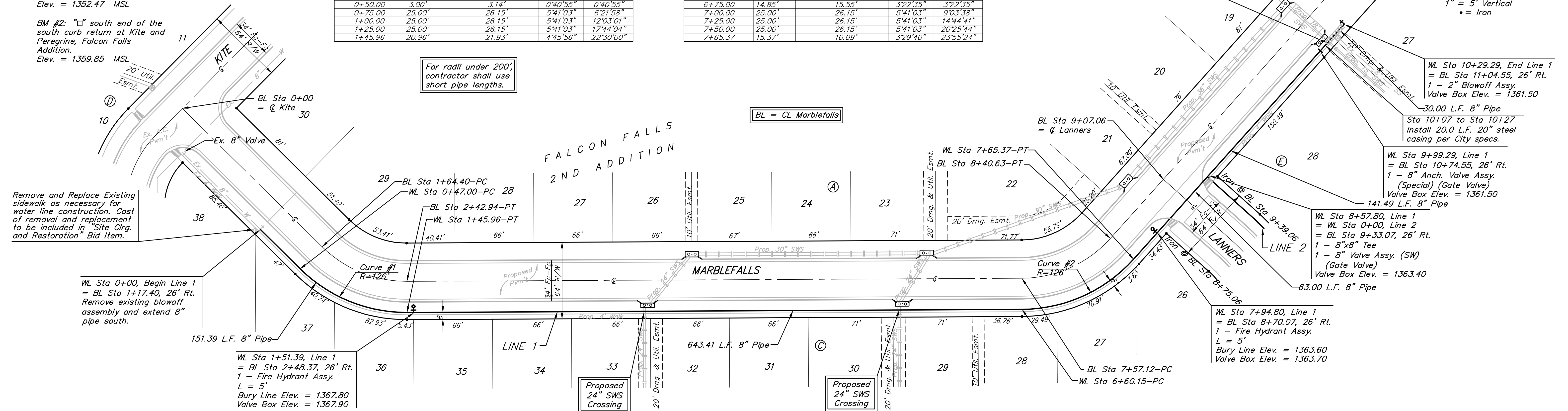
Curve #2
 Curve Data Based on Waterline
 Rad. = 126' Delta = 47°50'49" Tangent = 55.90'
 Arc = 105.22' L.C. = 102.19' Def/Ft. = 13.64197 Min.

Station	FACE CHORD LENGTHS		Defl.	T. Defl.
	Arc	6' Rt.		
6+60.15	-	-	0°00'00"	0°00'00"
6+75.00	14.85'	15.55'	3°22'35"	3°22'35"
7+00.00	25.00'	26.15'	5°41'03"	9°03'38"
7+25.00	25.00'	26.15'	5°41'03"	14°44'41"
7+50.00	25.00'	26.15'	5°41'03"	20°25'44"
7+65.37	15.37'	16.09'	3°29'40"	23°55'24"

For radii under 200', contractor shall use short pipe lengths.

BL = CL Marblefalls

Scale: 1" = 40' Horizontal
 1" = 5' Vertical
 • = Iron



Baughman WATER 1
 FALCON FALLS 2ND ADD. - PH. II
 LINE 1
 WATER DISTRIBUTION SYSTEM

Baughman Company, P.A. 315 Ellis St. Wichita, KS 67211 P 316-262-7271 F 316-262-0149
 ENGINEERING | SURVEYING | PLANNING | LANDSCAPE ARCHITECTURE

PROJECT NUMBER 448-90107	DESIGN AEG	DRAWN TMS
APPROVED	DATE 10/07	
REVISIONS:	SCALE Noted	
	SHEET	3 OF 12

FalconFalls2ndPh2/Wtr1 06-01-E462