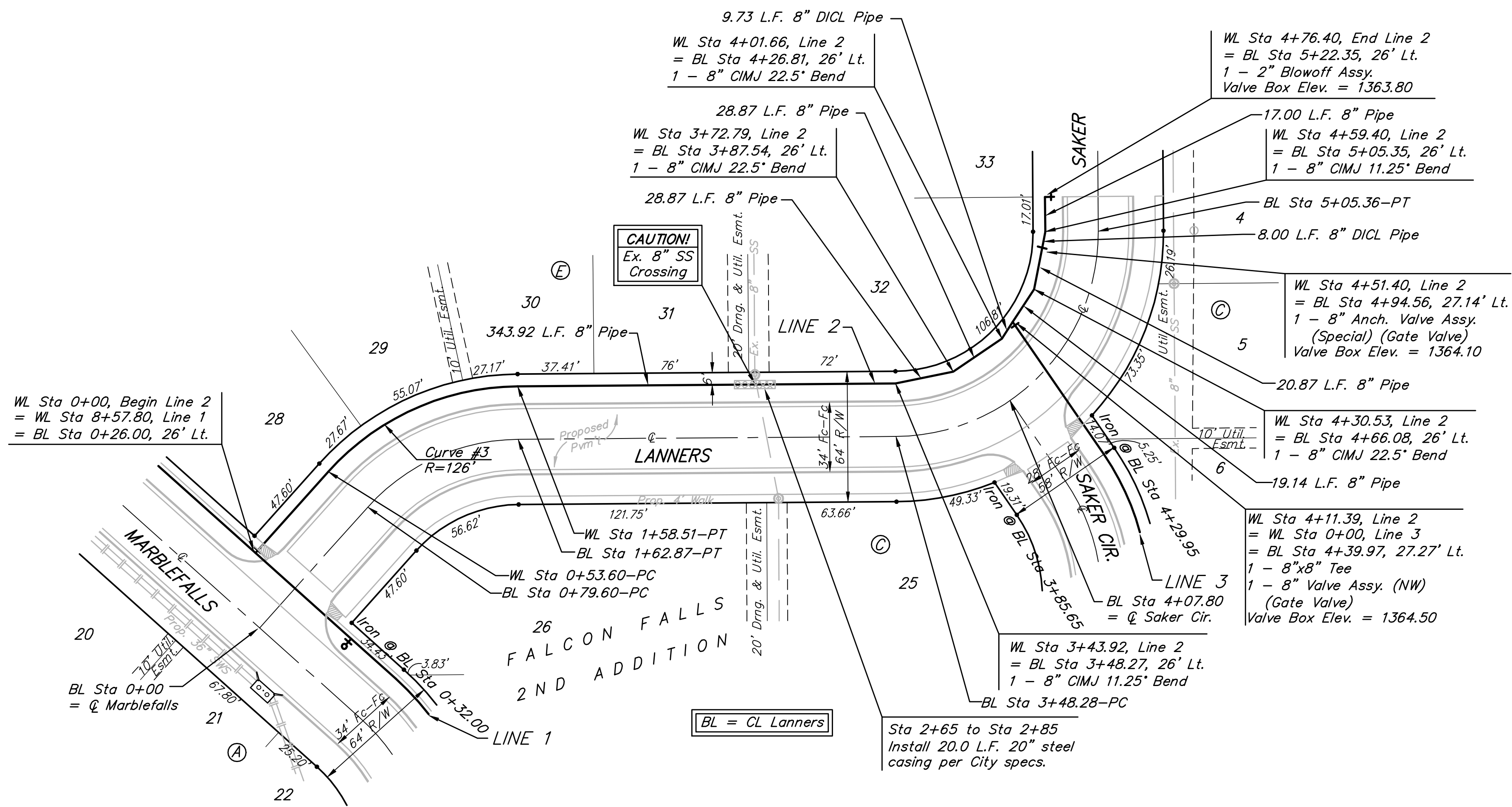


**BENCHMARKS:**

BM #1: "□" CL face of catch basin, west side of Lot 4, Block 5, Falcon Falls Addition. Elev. = 1352.47 MSL

BM #2: "□" south end of the south curb return at Kite and Peregrine, Falcon Falls Addition. Elev. = 1359.85 MSL

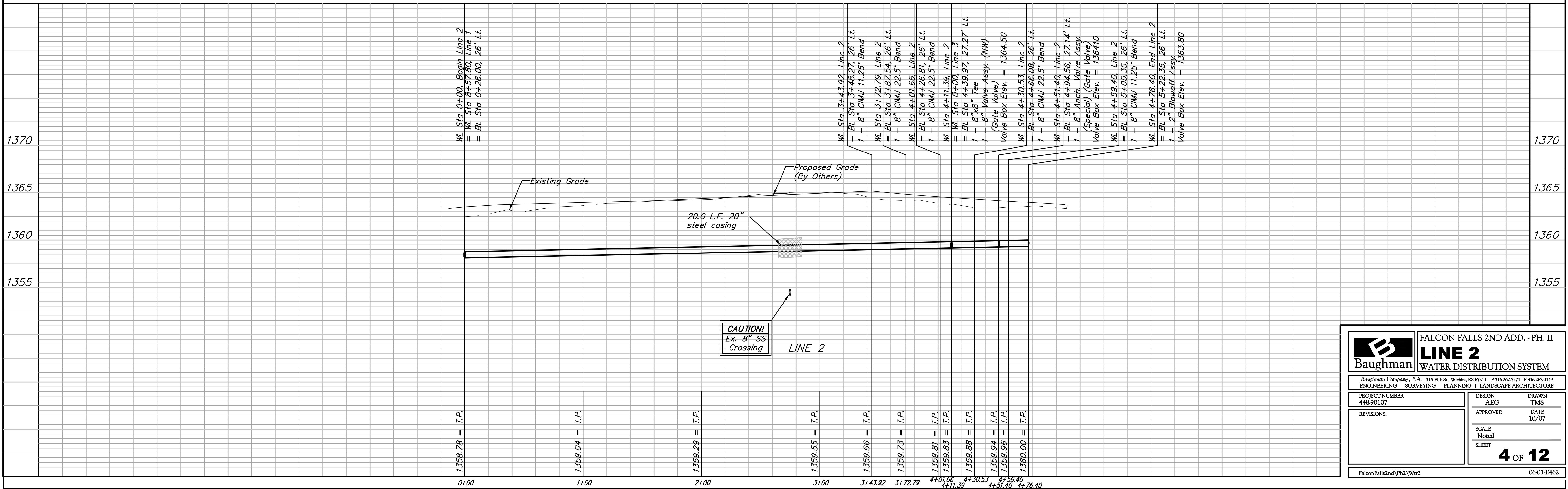


Scale: 1" = 40' Horizontal  
1" = 5' Vertical  
• = Iron

For radii under 200', contractor shall use short pipe lengths.

Curve #3  
Curve Data Based on Waterline  
Rad. = 126' Delta = 47° 42' 28" Tangent = 55.71'  
Arc = 104.91' L.C. = 101.91' Def/Ft. = 13.64249 Min.

Station	Arc	FACE CHORD LENGTHS		
		6' Lt.	Def.	T. Def.
0+53.60	-	-	0'00"00"	0'00"00"
0+75.00	21.40'	22.39'	4'51"57"	4'51"57"
1+00.00	25.00'	26.15'	5'41"04"	10'33"00"
1+25.00	25.00'	26.15'	5'41"04"	16'14"04"
1+50.00	25.00'	26.15'	5'41"04"	21'55"08"
1+58.51	8.51'	8.91'	1'56"06"	23'51"14"



**Baughman** ENGINEERING | SURVEYING | PLANNING | LANDSCAPE ARCHITECTURE

**FALCON FALLS 2ND ADD. - PH. II**  
**LINE 2**  
**WATER DISTRIBUTION SYSTEM**

PROJECT NUMBER: 448-90107  
DESIGN: AEG  
DRAWN: TMS  
APPROVED: [Signature]  
DATE: 10/07

REVISIONS: [Table]  
SCALE: Noted  
SHEET: 4 OF 12

FalconFalls2ndPh2/Wtr2 06-01-E462