

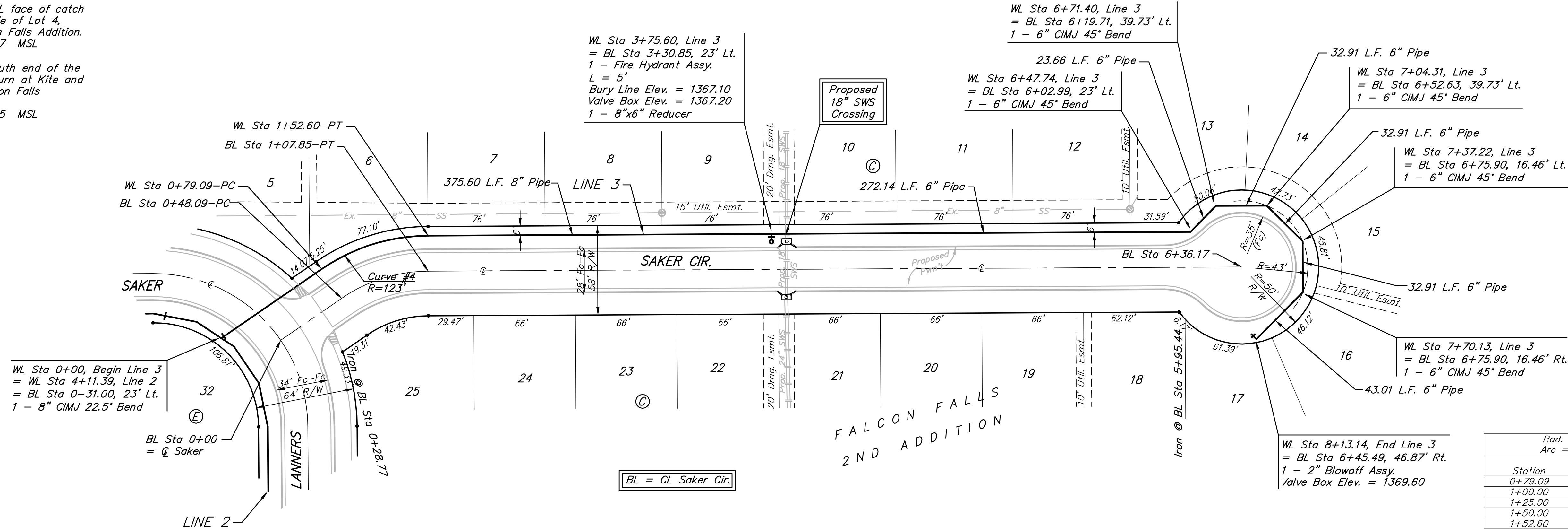
BENCHMARKS:

BM #1: "□" CL face of catch basin, west side of Lot 4, Block 5, Falcon Falls Addition. Elev. = 1352.47 MSL

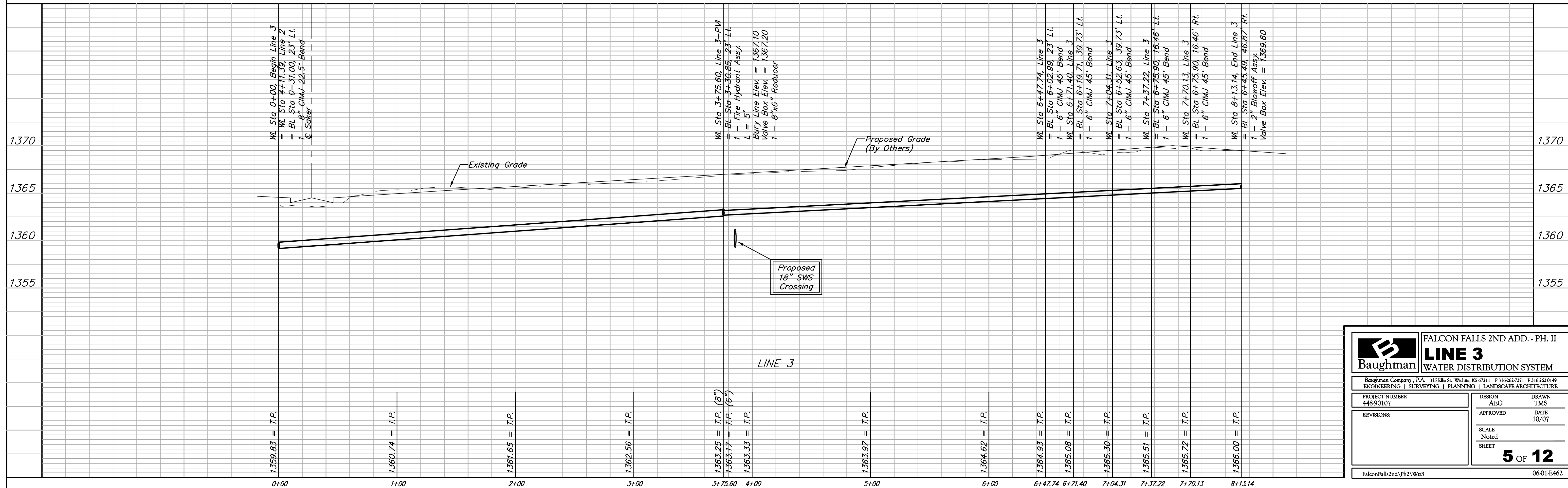
BM #2: "□" south end of the south curb return at Kite and Peregrine, Falcon Falls Addition. Elev. = 1359.85 MSL



Scale: 1" = 40' Horizontal
1" = 5' Vertical
• = Iron



For radii under 200', contractor shall use short pipe lengths.



B Baughman ENGINEERING | SURVEYING | PLANNING | LANDSCAPE ARCHITECTURE

FALCON FALLS 2ND ADD. - PH. II
LINE 3
WATER DISTRIBUTION SYSTEM

PROJECT NUMBER: 448-90107
DESIGN: AEG
APPROVED: [Signature]
DATE: 10/07

SCALE: Noted
SHEET: 5 OF 12

FalconFalls2ndPh2/Wtr3 06-01-E462