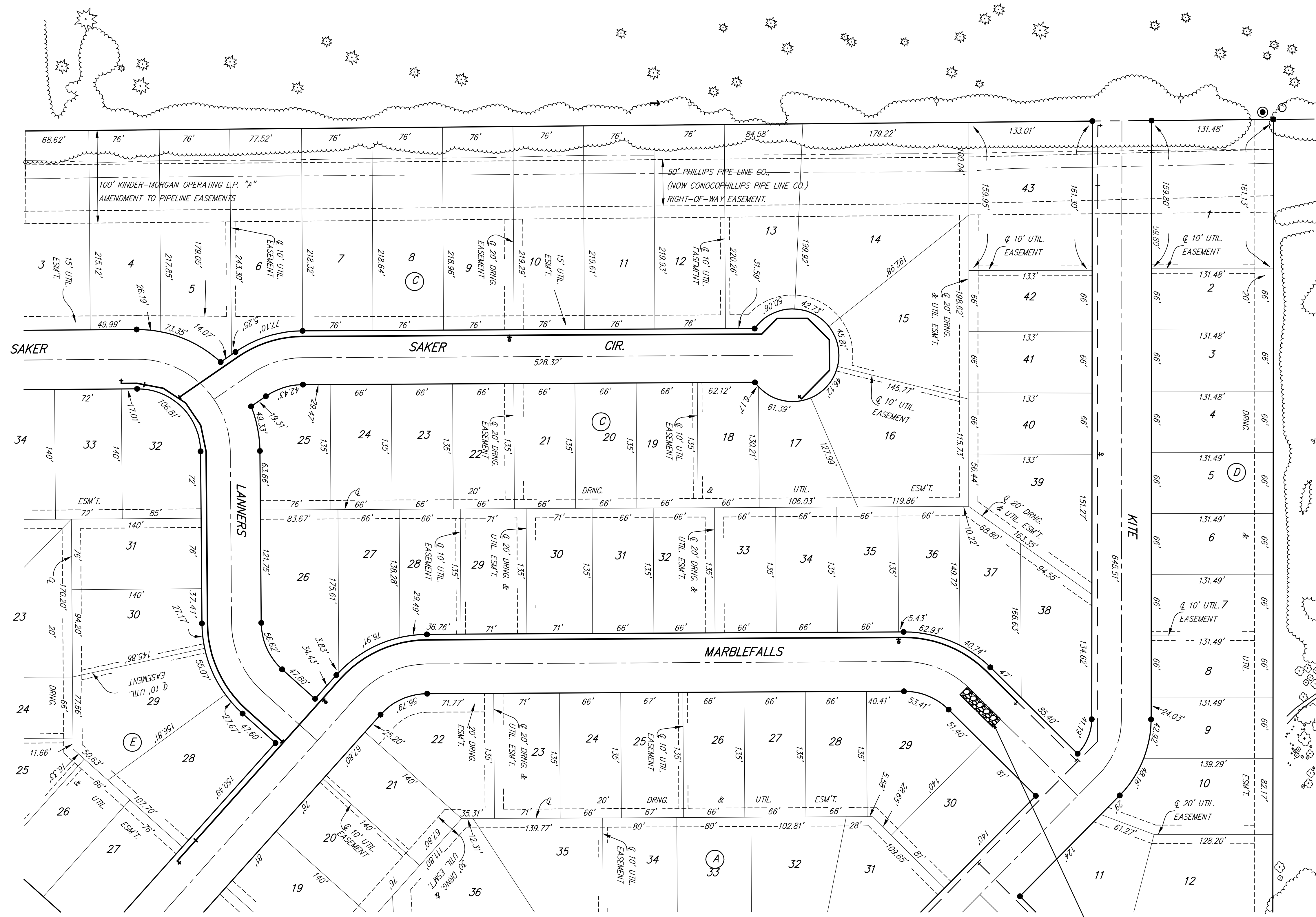




Scale: 1" = 60'



NOTE: Contractor shall remove & replace existing erosion control measures as necessary for construction. Contractor shall be required to maintain all on-site erosion control items until final acceptance by the City of Wichita.

Install one construction entrance onto existing paved roadway per detail, sheet 8.

Install one temporary construction entrance.

	FALCON FALLS 2ND ADD. - PH. II	
	EROSION CONTROL PLAN	
<small>Baughman Company, P.A. 315 Ellis St. Wichita, KS 67211 P 316-262-7271 F 316-262-0149 ENGINEERING SURVEYING PLANNING LANDSCAPE ARCHITECTURE</small>		
PROJECT NUMBER 448-90107	DESIGN TMS	DRAWN TMS
REVISIONS:	APPROVED DATE 01/06	SCALE Noted
		10 OF 12
<small>FalconFalls2ndVh2\ECPlan</small>		<small>06-01-E462</small>