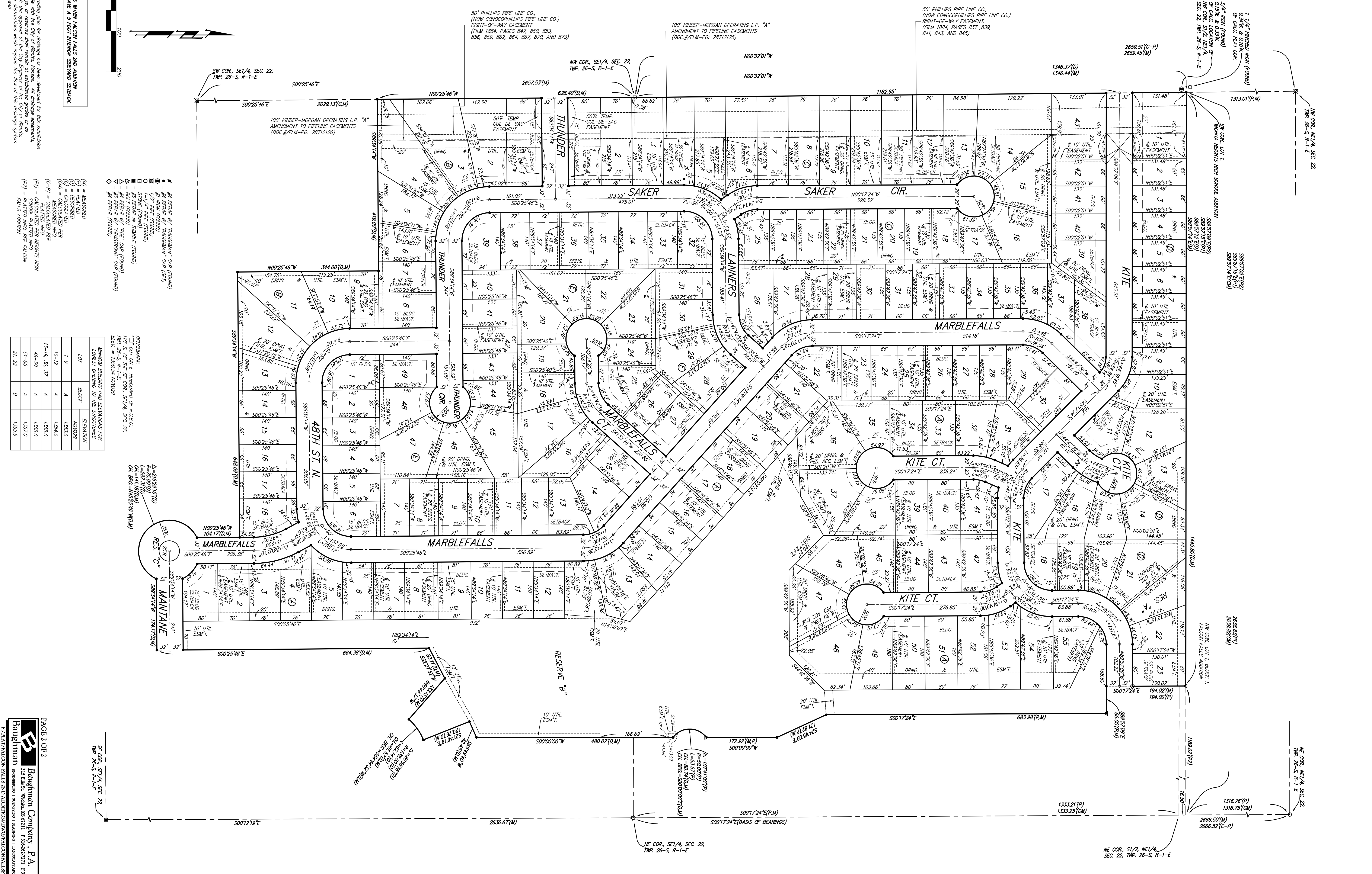


# FALCON FALLS AND ADDITION WICHITA, SEDGWICK COUNTY, KANSAS



- (M) = MEASURED
- (P) = PLATTED
- (C) = CALCULATED
- (S) = SURVEYED
- (D) = DESCRIBED
- (V) = VENT PIPE (FOUND)
- (W) = W/2" PIPE (FOUND)
- (L) = 1-1/4" PIPE (FOUND)
- (S) = SIDE (FOUND)
- (H) = HUBBLE (FOUND)
- (R) = RAIL (FOUND)
- (C) = CAP (FOUND)
- (K) = KANSAS (FOUND)
- (F) = FALLS (FOUND)
- (A) = ADDITION (FOUND)
- (T) = THUNDER (FOUND)
- (M) = MARBLE (FOUND)
- (F) = FALLS (FOUND)
- (A) = ADDITION (FOUND)
- (S) = SEDGWICK (FOUND)
- (C) = COUNTY (FOUND)
- (K) = KANSAS (FOUND)

LOT	BLOCK	ELEVATION
1-9	A	1353.0
10-12	A	1354.0
13-18, 36, 37	A	1355.0
46-50	A	1355.0
51-55	A	1357.0
21, 22	D	1359.5