

**MANSFIELD DRIVE**

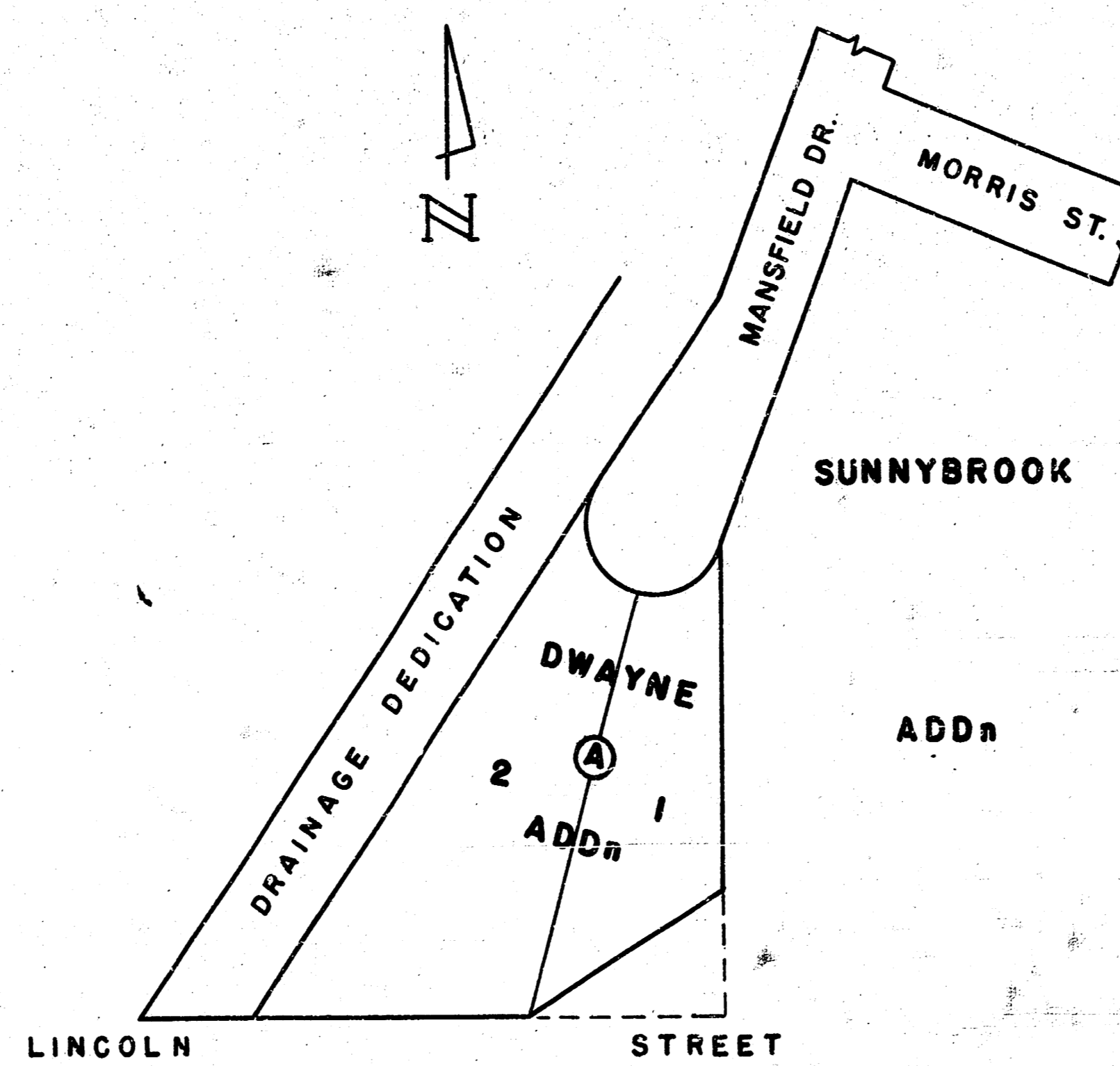
**W. L. SUNNYBROOK ADDn TO & INCLUDING CUL-DE-SAC**

**CITY OF WICHITA, KANSAS**

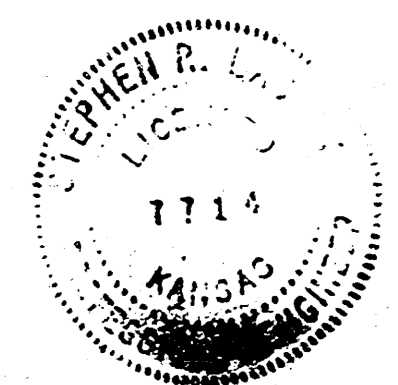
**R.W. BRUGGEMAN DIRECTOR OF ENGINEERING / CITY ENGINEER**

**DATE:**

**PROJ. NO. 472 76 245 80978 000 000 001**



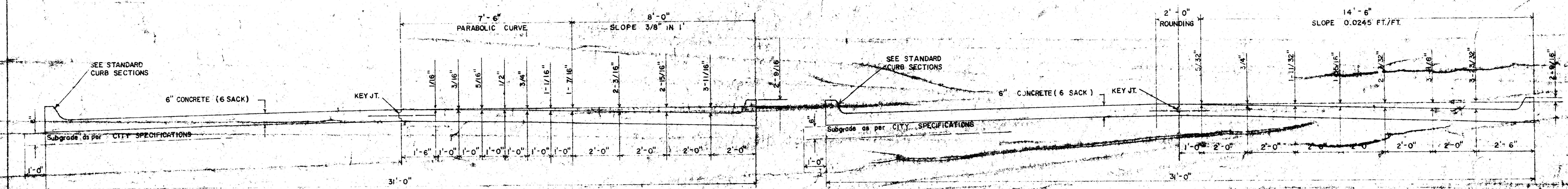
**LOCATION MAP**  
SCALE: 1" = 100'



1/5

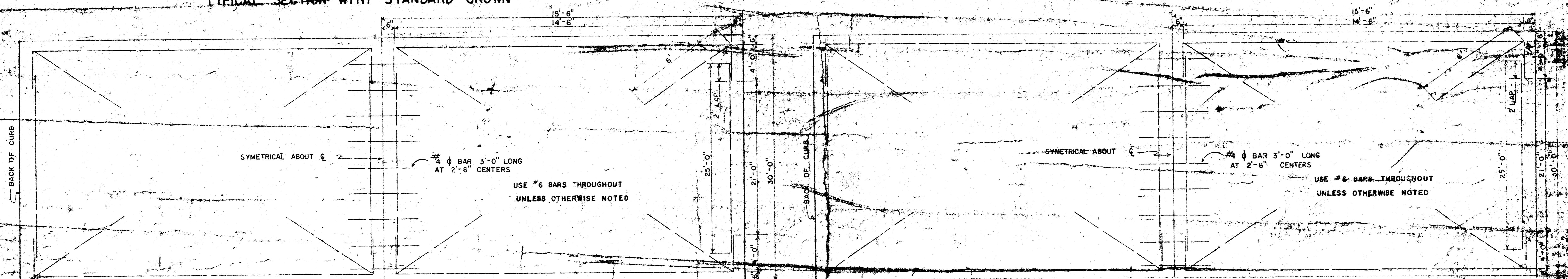
1/5

# TYPICAL SECTIONS OF 30" CONCRETE PAVEMENT



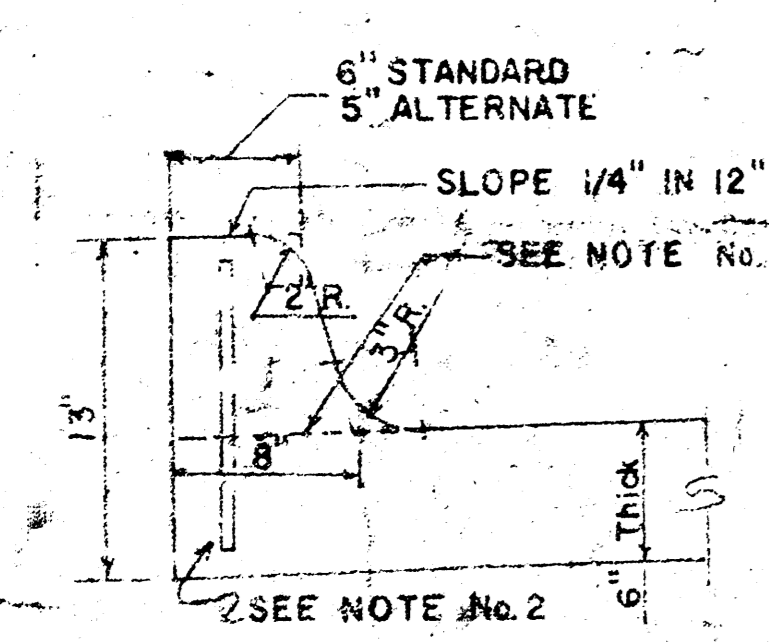
TYPICAL SECTION WITH STANDARD CROWN

TYPICAL SECTION WITH ALTERNATE CROWN

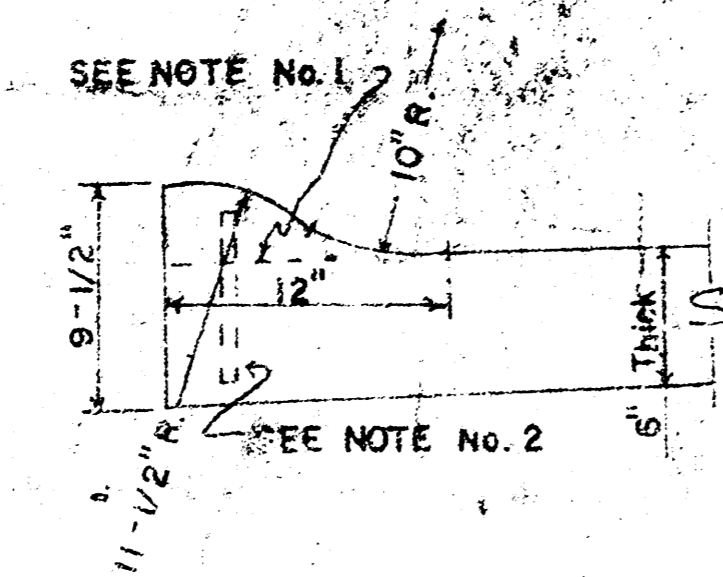


STEEL PATTERN

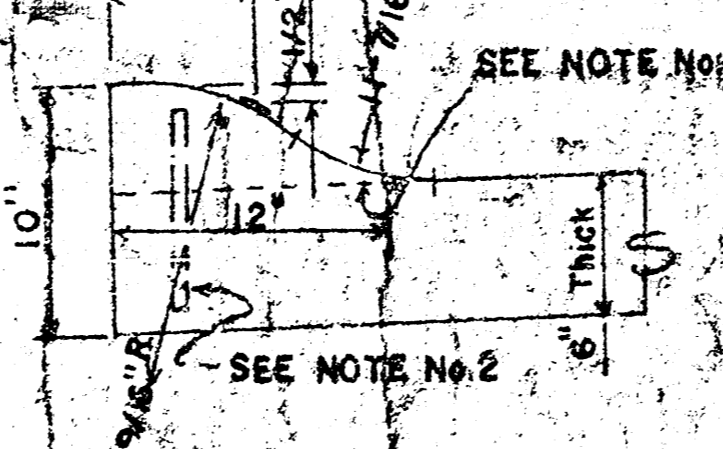
STEEL PATTERN



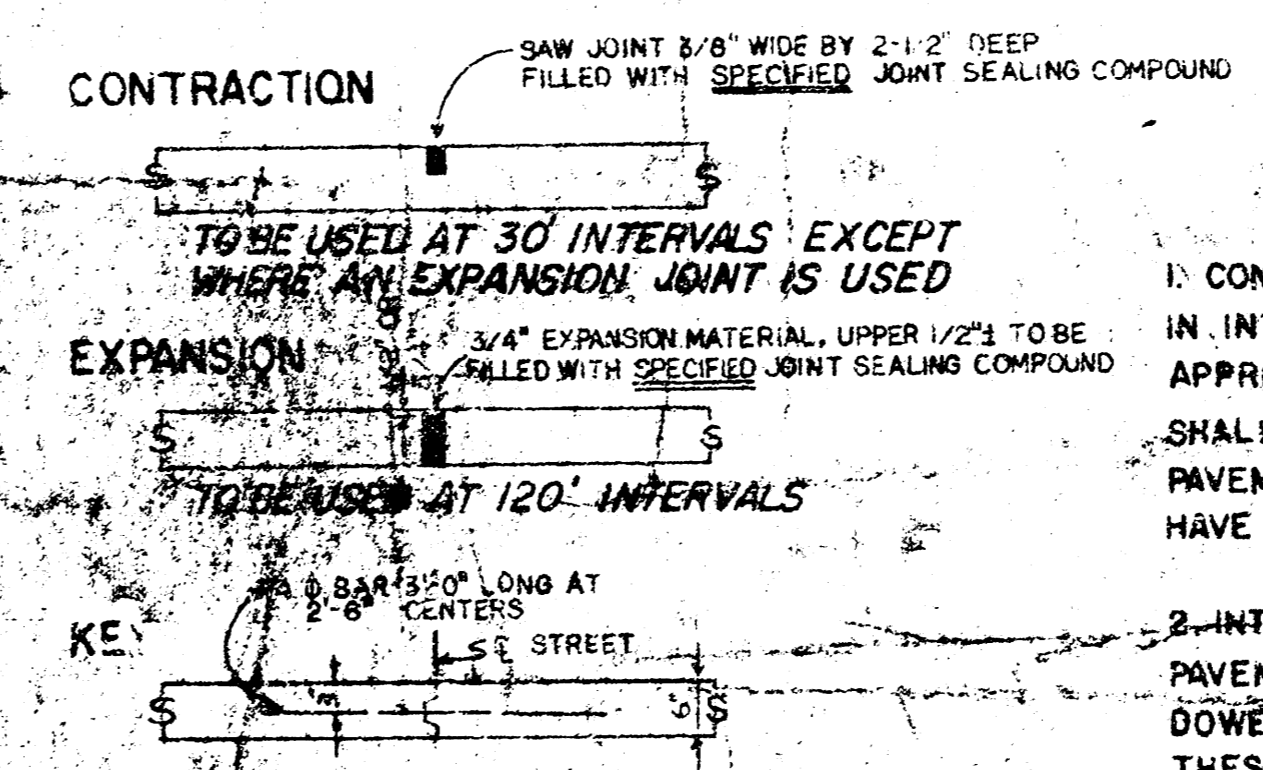
INTEGRAL CURB



ROLL-TYPE



ALTERNATE ROLL-TYPE



JOINT DETAILS

## GENERAL NOTES

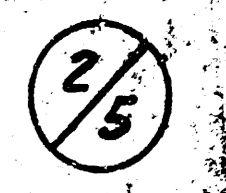
- CONTRACTION JOINTS MAY BE CONSTRUCTED IN INTEGRAL CURBS BY SAWING WITH AN APPROVED CONCRETE SAW. THE SAW CUT SHALL EXTEND THROUGH THE CURB TO THE PAVEMENT. SAWED CONTRACTION JOINTS SHALL HAVE A MAXIMUM SPACING OF 10'.
- INTEGRAL CURB SHALL BE TIED TO THE PAVEMENT BASE WITH SHORT DEFORMED DOWEL BARS SPACED AT 2'-6" INTERVALS. THESE DOWEL BARS SHALL NOT BE LESS THAN 1/2" OR MORE THAN 3/4" IN DIAMETER.

MANSFIELD DRIVE

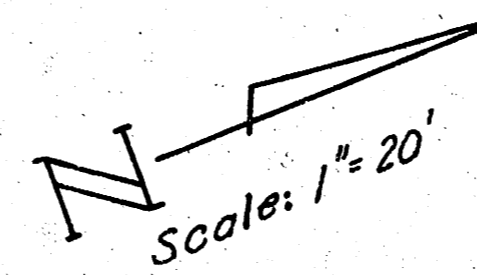
CITY OF WICHITA, KANSAS  
DEPARTMENT OF ENGINEERING

R. W. BRUGGEMAN - DIRECTOR OF ENGINEERING/CITY ENGINEER

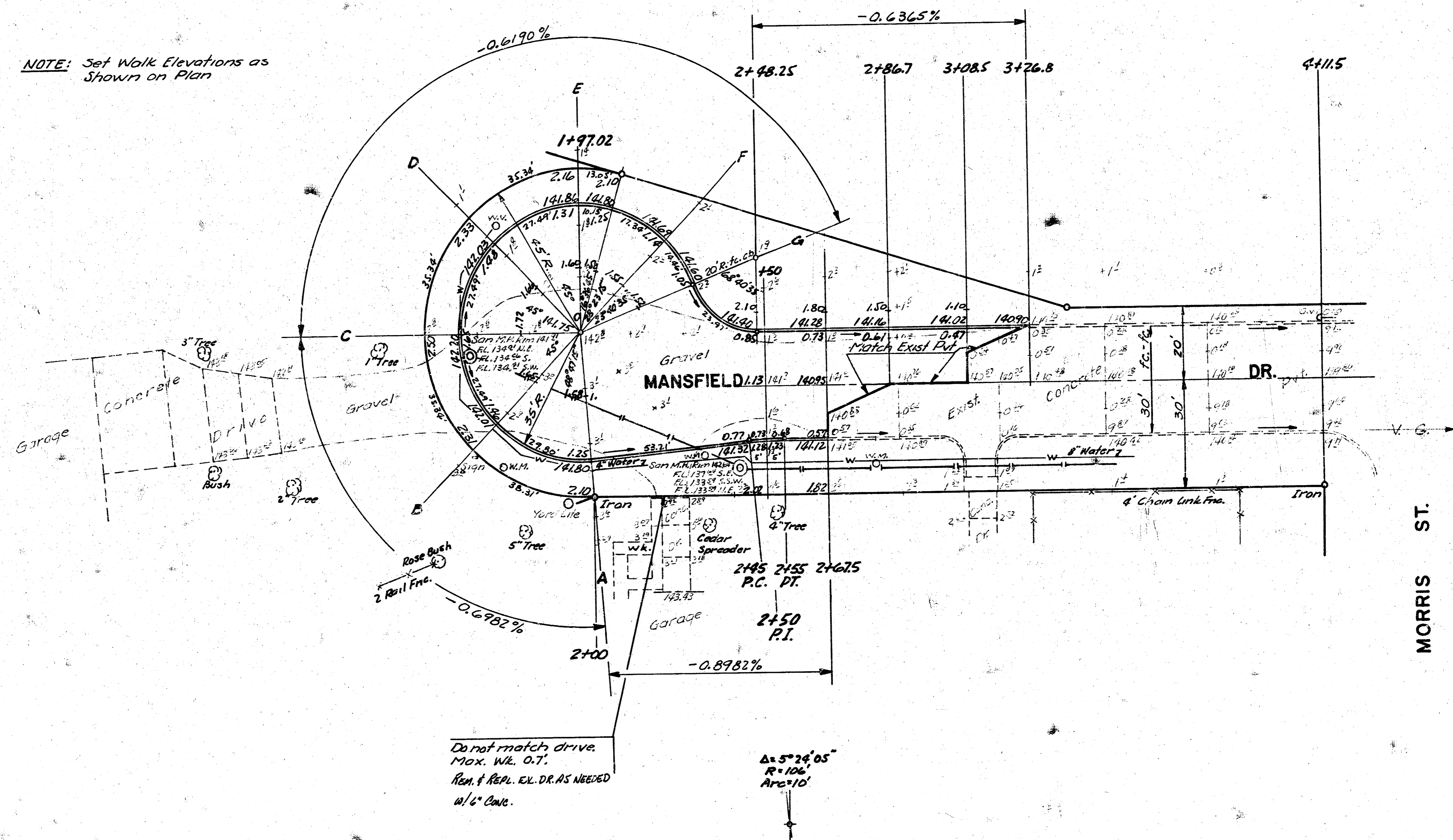
DATE: PROJ. NO. 472 76 245 80978 000 000 001



B.M. 144.64 S.W. Cor. Conc. Porch. \*3348 Morris  
 B.M. 140.29 W.C. Mansfield & Morris  
 B.M. 139.92 E. Cb. Mansfield & S.L. Rose Lane  
 B.M. 143.11 G' in Globe W.L. Eastern N. Cb. Rose Lane



NOTE: Set Walk Elevations as Shown on Plan



Survey D.L.K. Bluffton  
 Plan D.E.C.  
 Ex.  
 Checked

**SUB-GRADE**  
 TYPE OF SUB-GRADE MATERIAL SHALL BE DETERMINED BY THE ENGINEER. SUB-GRADE TRENCHES SHALL BE FILL WITH SAND, GRAVEL, CEMENT, OR ANY OTHER MATERIAL AS SPECIFIED ON ANY DOCUMENTS REFERRED TO.

Total Earthwork  
 Excavation  
 Prop.  
 372.6 C.Y.  
 +10% 37.3  
 Total 409.9 C.Y.

Total Manipulation = 713.1 S.Y.

**MANSFIELD DRIVE**  
**W.L. SUNNYBROOK ADDN TO**  
**& INCLUDING CUL-DE-SAC**

PROJ. NO. 472 76 245 80978 000 000 001 3/5

3/5

FILMED FROM THE BEST



