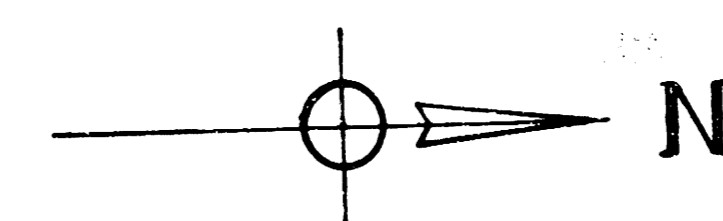


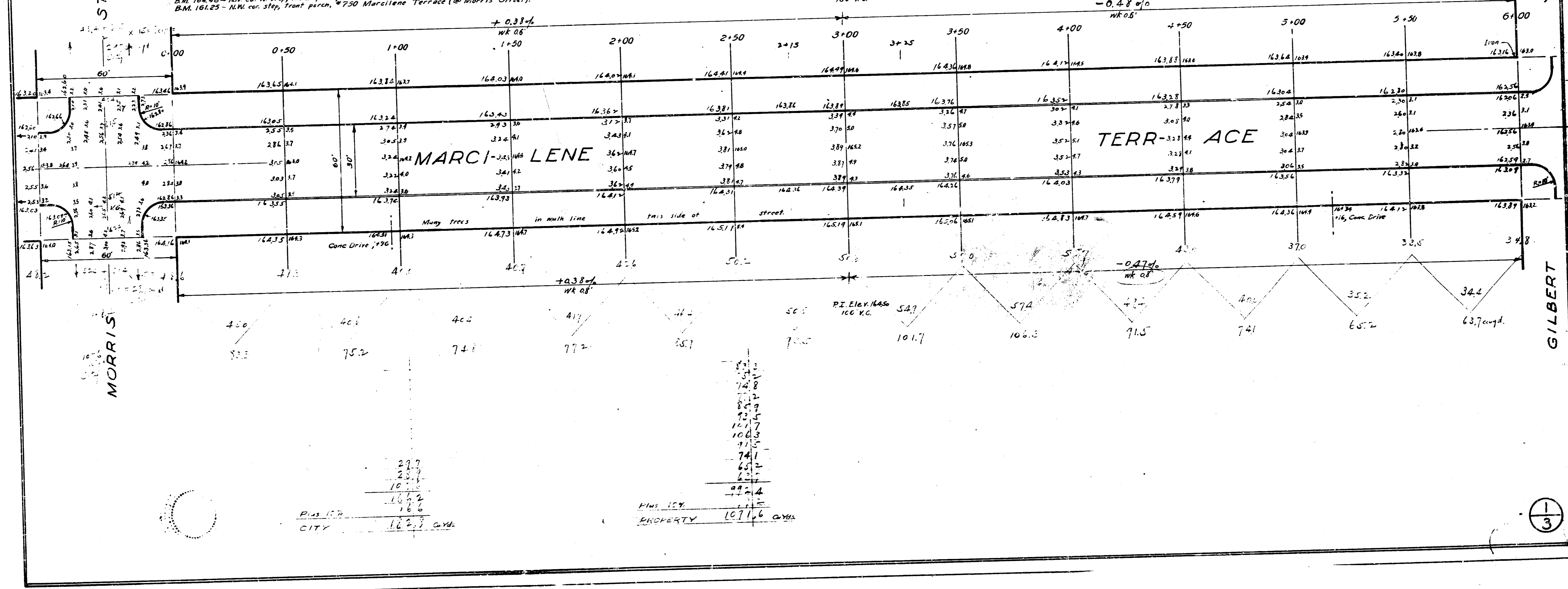
PAVING PLAN-----1945
MARCILENE TERRACE S.L. MORRIS
 CONCRETE 30' & CURB S.L. KELLOGG



MORRIS STREET

GILBERT STREET

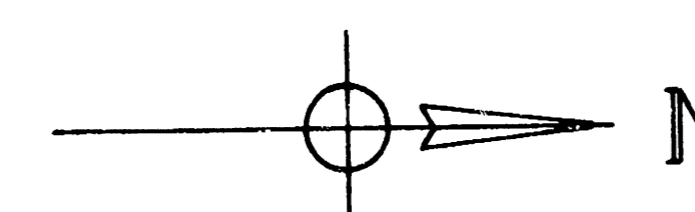
B.M. 164.48 - NW cor. N stop, front porch, house #501 Marcilene Terrace (@ Morris Street).
 B.M. 164.25 - NW cor. stop, front porch, #750 Marcilene Terrace (@ Morris Street).
 P.I. Elev. 164.00
 100' X E.
 B.M. 163.46 - S.W. cor. (stone block) lower step, S. side house #5506 E. Gilbert (@ Marcilene Terrace).
 B.M. 164.20 - S.W. cor. lower step, front of house #948 Marcilene Terrace.



Plus 15.76
 CITY 162.7 City
 MIN. 15.76
 PROPERTY 107.6 City

1
 3

PAVING PLAN-----1945
MARCILENE TERRACE C.L. MORRIS
 S.L. KELLOGG
 CONCRETE 30' & CURB

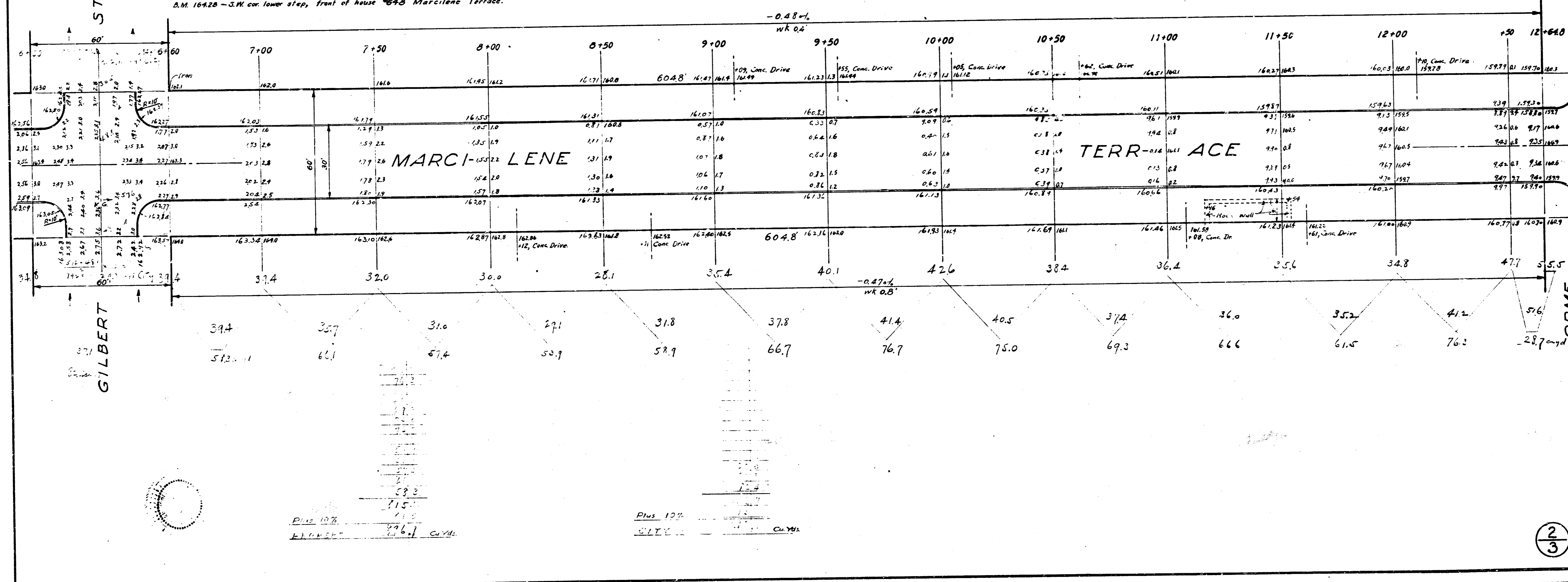


GILBERT STREET

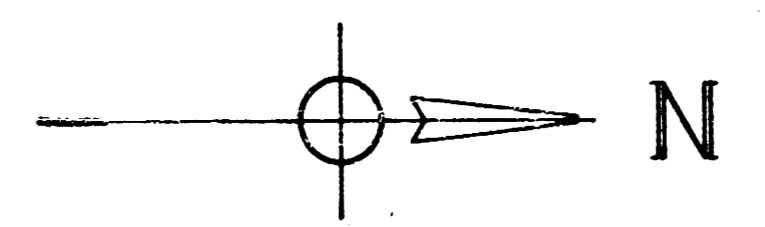
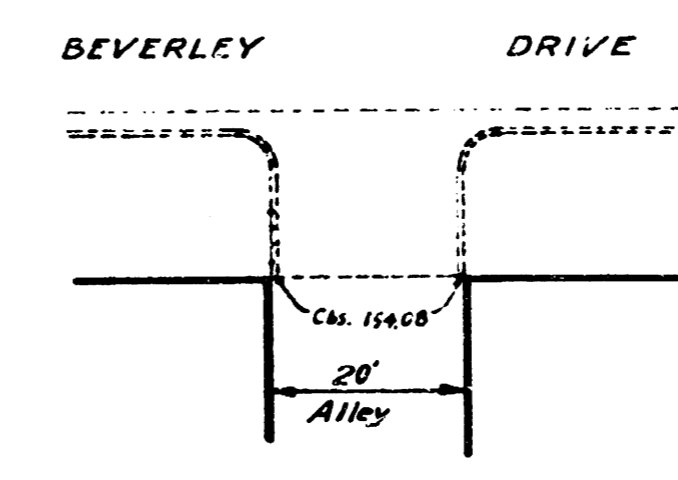
ORME STREET

B.M. 169.48 - 3.00 cur. (stone block) lower step, S. side house #5506 E. Gilbert (@ Marcilene Terrace).
 B.M. 164.20 - 3.00 cur. lower step, front of house #648 Marcilene Terrace.

B.M. 161.92 - 3.00 cur. lower step, front of house #600 Marcilene (S. side Orme).
 B.M. 161.66 - N.E. cor. lower step, front of house #545 Marcilene (N. side Orme).



PAVING PLAN-----1945
MARCILENE TERRACE S.L. MORRIS
 S.L. KELLOGG
 CONCRETE 30' & CURB

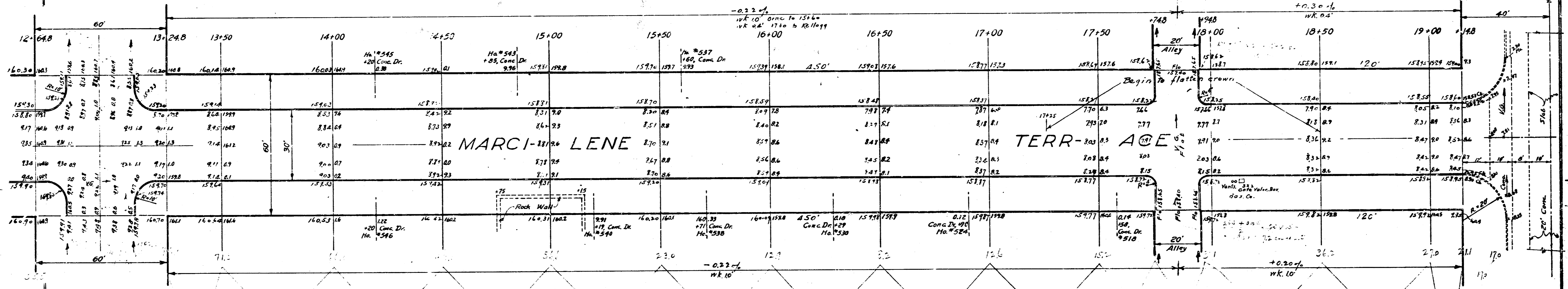


STREET

STREET

B.M. 161.92 - S.W. cor. lower step, front of house #800 Marcilene (S. side Orme).
 B.M. 161.66 - N.E. cor. lower step, front of house #515 Marcilene (N. side Orme).

B.M. 153.96 - "R" in Ritchie, N. end W. C. Beverly Drive, @ S. L. Kellogg.
 B.M. 161.90 - N.W. cor. lower step @ S. end of porch, front of #515 Marcilene Terrace.

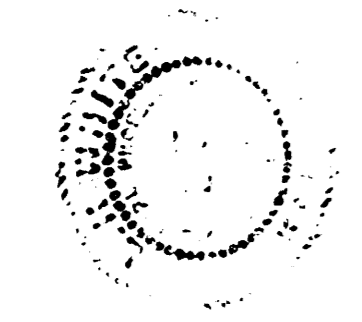


ORME

KELLOGG

SUMMARY

Sheet 1	185.3
Sheet 2	175.1
Sheet 3	369.7
TOTAL CITY	630.0 Cu. Yds.
Sheet 1	1081.6
Sheet 2	876.7
Sheet 3	771.6
TOTAL PROPERTY	2730.0 Cu. Yds.
GRAND TOTAL	3360.0 Cu. Yds.



Plus 10% CITY
 Plus 10% PROPERTY
 6 Cu. Yds.