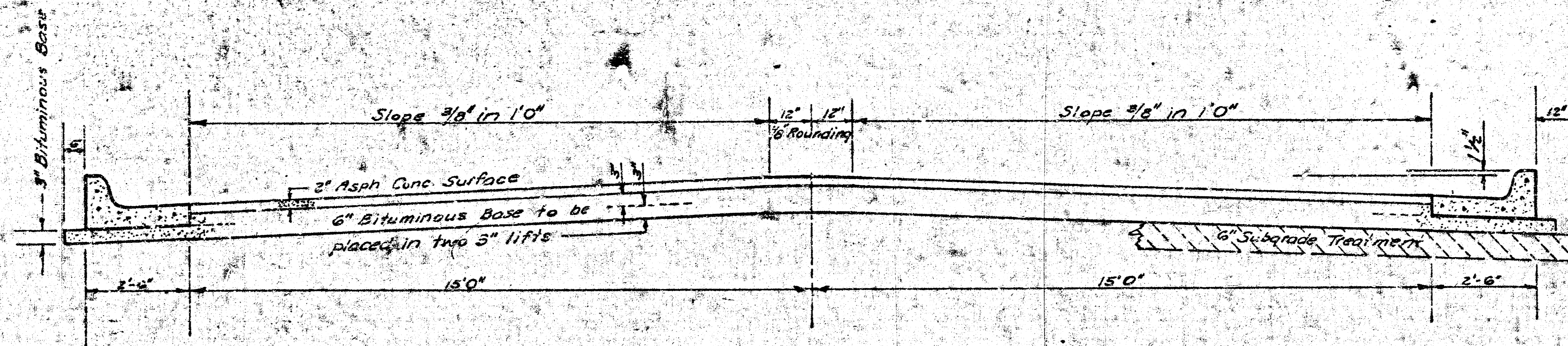


MAYBELLE PLACE
S.L. THURMAN TO W.L. TYLER ROAD



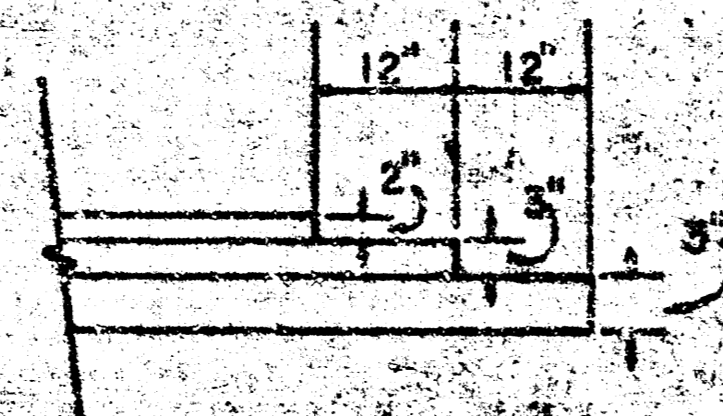
TYPICAL SECTION

35' ASPHALTIC CONCRETE PAVEMENT WITH BITUMINOUS BASE

The A.C. Pavement between the comb curb & gutter shall be paid as Sq.Yds. 8" A.C. Pavement (6" Bituminous Base).
The Bituminous Base under the comb curb & gutter shall be paid as Sq.Yds. 3" Bituminous Base.

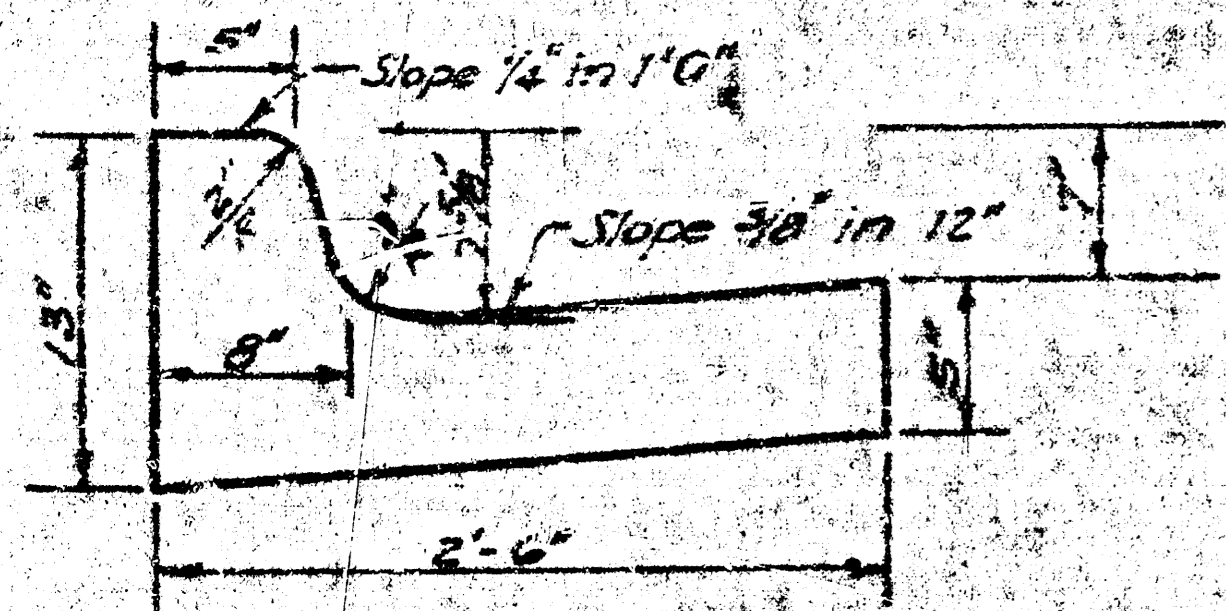
A TACK COAT OF EMULSIFIED ASPHALT (SS-1H) SHALL BE APPLIED AT AN APPROXIMATE RATE 0.16 GALLONS PER SQ YD BETWEEN LIFTS OF ASPHALTIC MATERIALS WHEN ORDERED BY THE ENGINEER. TACK COAT WILL NOT BE PAID FOR DIRECTLY AND SHALL BE CONSIDERED AS SUBSIDIARY TO PRICE BID FOR ASPHALTIC PAVEMENT.
BITUMINOUS BASE AND ASPHALTIC CONCRETE WEARING SURFACE SHALL BE PLACED WITH A LAYDOWN MACHINE HAVING AUTOMATIC ELECTRONIC CONTROLS FOR CROWN AND GRADE. CONSTRUCTION JOINTS IN EACH LIFT SHALL BE STAGGERED A MINIMUM DISTANCE OF 1' WITH JOINTS IN PRECEDING LIFTS AND PLACED SUCH THAT A JOINT WILL BE CONSTRUCTED ON THE CENTERLINE IN THE TOP LIFT.

DETAIL OF TRANSVERSE CONSTRUCTION JOINTS

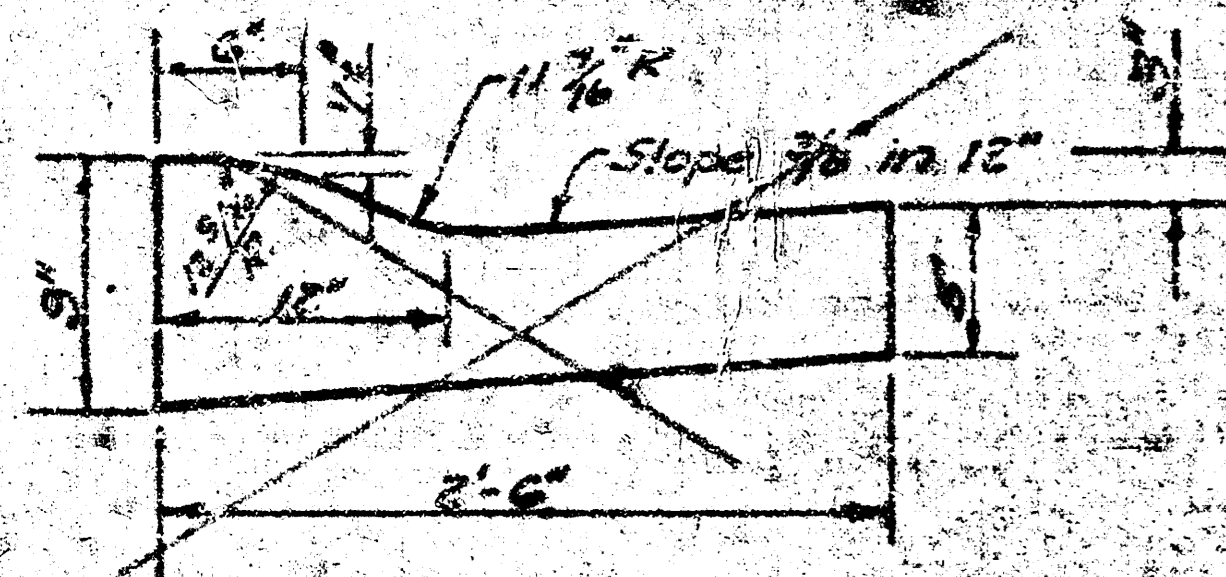


TRANSVERSE CONSTRUCTION JOINTS SHALL BE CONSTRUCTED IN FLEXIBLE BASE PAVEMENTS AT LOCATIONS WHERE PAVEMENT TEMPORARILY ENDS TO FACILITATE FUTURE PAVEMENT CONSTRUCTION AS SHOWN BY DETAIL. THE COST OF CONSTRUCTING THE TRANSVERSE CONSTRUCTION JOINTS SHALL NOT BE MEASURED OR PAID FOR DIRECTLY BUT SHALL BE INCLUDED IN THE BID PRICE FOR SQUARE YARDS OF ASPHALTIC CONCRETE PAVEMENT.

COMBINED CURB & GUTTER



ROLL TYPE CURB & GUTTER



CITY OF WICHITA KANSAS

DEPARTMENT of PUBLIC WORKS - Engineering

Division

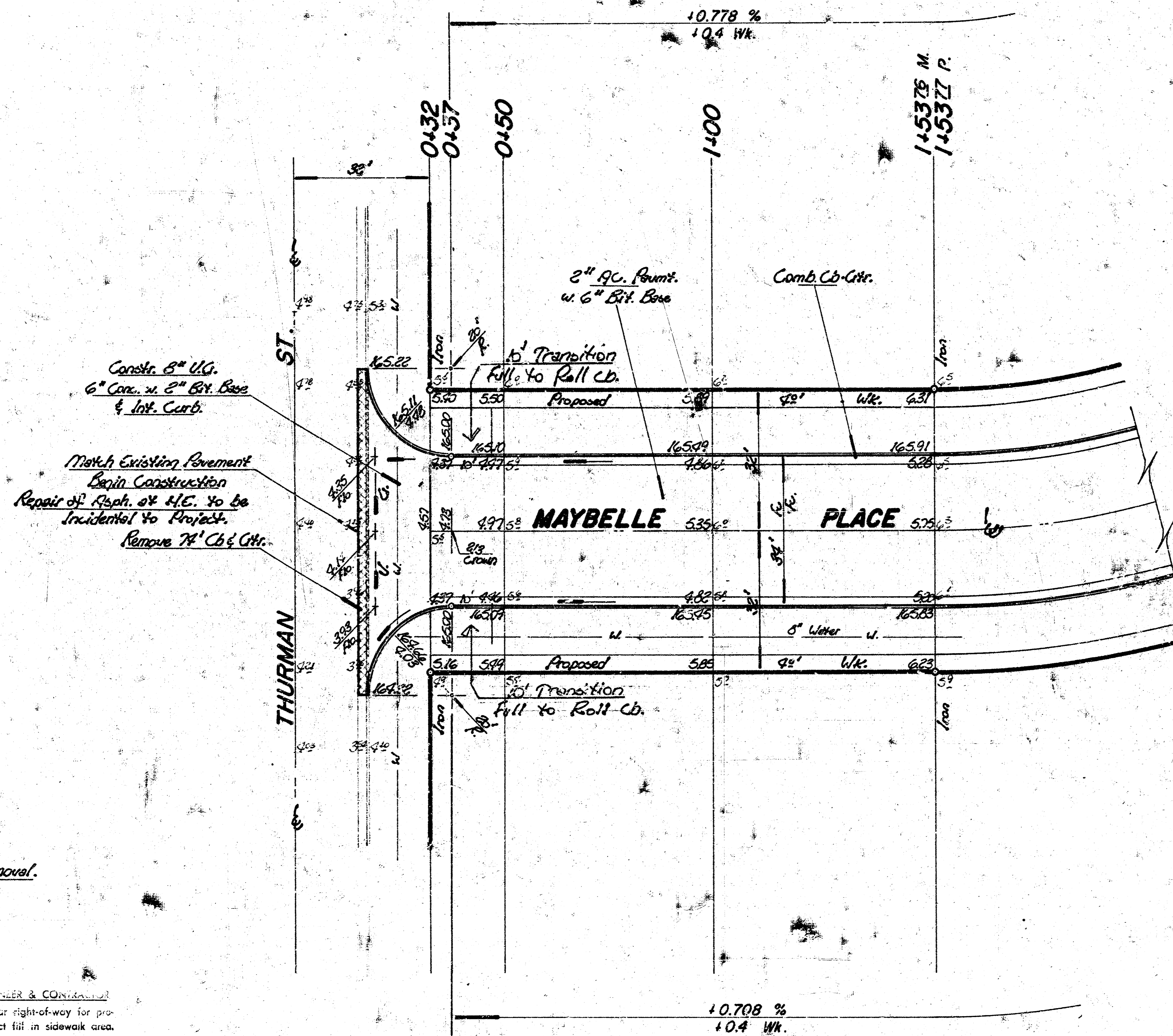
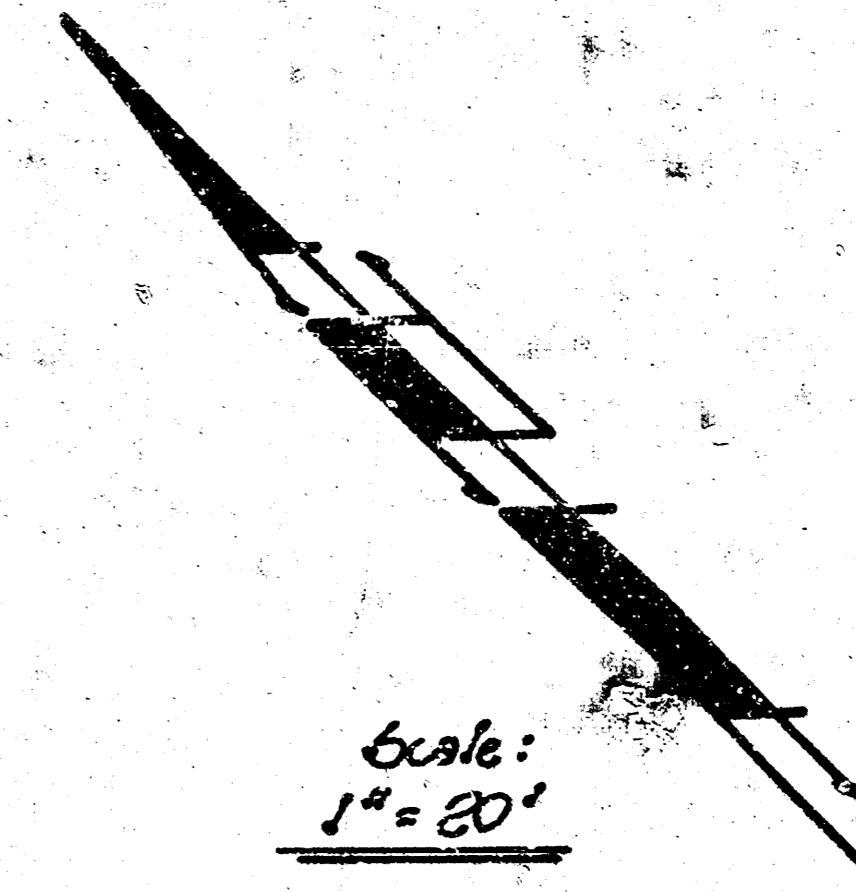
R. W. LINN CITY ENGINEER

DATE Proj No. DAKS 577097

1/4

B.M. 162.35 N.E. Cor. Conc. Arch 9011 Thurman
 B.M. 164.55 'P' in Ritchie N. Ch. Thurman & W.L. Maybelle.

Baseline is to Maybelle Place.



- Denotes Removal.

Roll Cb to be constructed on this Project.
 Contractor to take ties & replace any 'irons either moved or destroyed during construction.

NOTE TO FIELD ENGINEER & CONTRACTOR:
 Grade parking and clear right-of-way for proposed sidewalk. Compact fill in sidewalk area. TO BE CONSTRUCTED BY "OTHERS".

SUB-GRADE
 TYPE OF SUB-GRADE TREATMENT SHALL BE DETERMINED BY THE FIELD ENGINEER. SUB-GRADE TREATMENT MAY CONSIST OF LIME TREATMENT, CEMENT TREATMENT, SUB-GRADE MODIFICATION, OR ANY COMBINATION OF THESE.

Property		City	
Excavation = 611.9 cy.	Comp. Fill = 109.2 cy.	Excavation = 93.2 cy.	Comp. Fill = 81.2 cy.
+10% = 61.2 cy.	+10% = 10.9 cy.	+10% = 9.3 cy.	+10% = 8.1 cy.
Total = 673.1 cy.	Total = 120.1 cy.	Total = 102.5 cy.	Total = 89.3 cy.
Manipulation = 1735 cy.		Manipulation = 101.9 cy.	

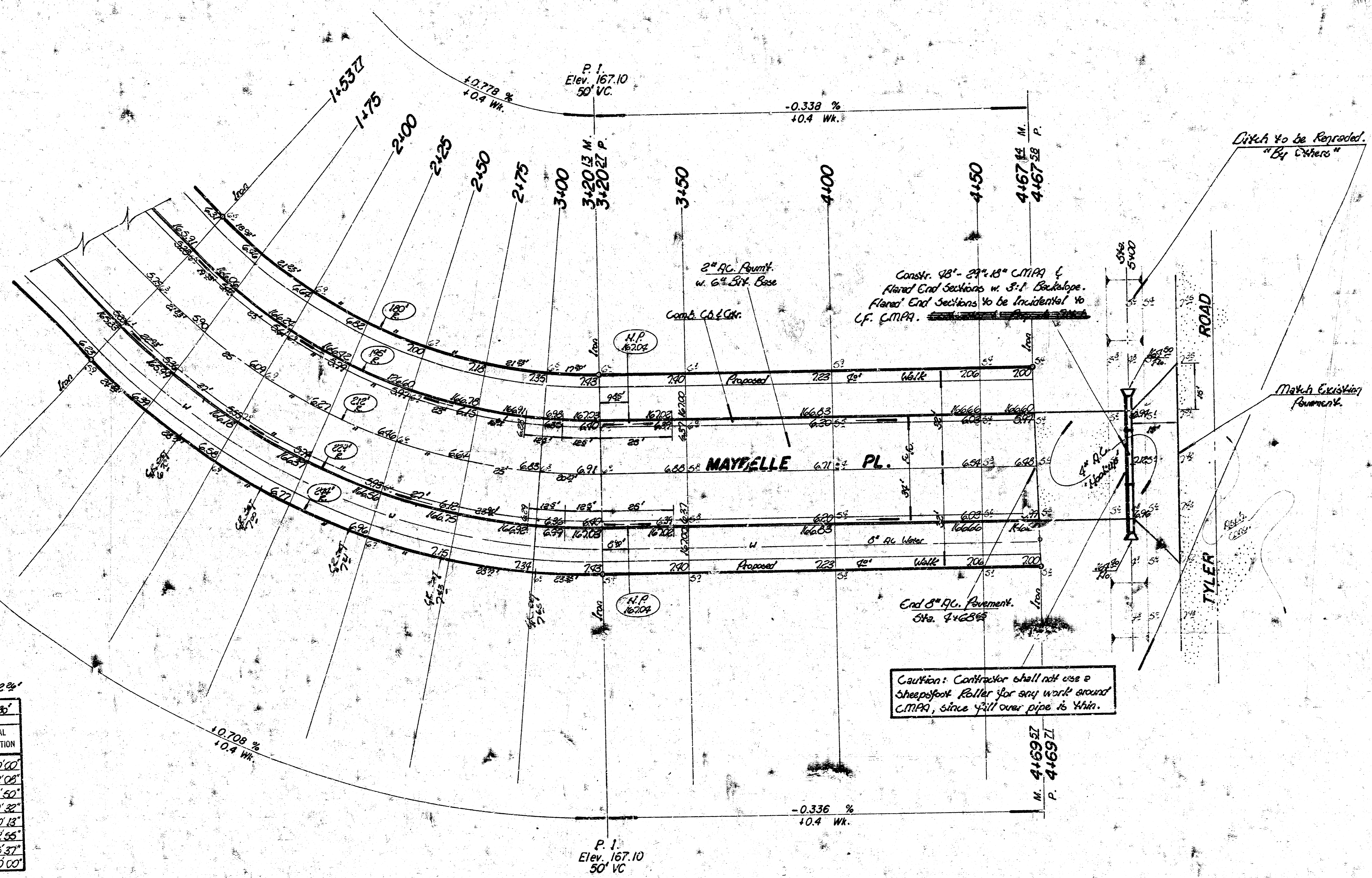
MAYBELLE PLACE
 S. L. Thurman to W. L. Tyler Rd.
 35' B.B.-2' A.C. w. 6" Bit. Base - Comp.
CITY OF WICHITA,
 R. W. Linn City Eng.
 Project No. DAKS 57
 Date _____

$\Delta = 45^\circ$ R = 212' T = 874' L = 466' LC = 422'

CURVE DATA BASED ON $\Delta = 45^\circ$ RAD. $\Delta = 22.39^\circ$

STA.	ARC.	CHORD LENGTH		DEFLECTION	
		OFF CB.	OFF EB.	DEFLECTION	TOTAL DEFLECTION
1+53.77				0' 00" 70"	0' 00" 00"
1+75	21' 23"	13' 22"	23' 22"	2' 52" 08"	2' 52" 08"
2+00	25'	20' 04"	27' 38"	3' 22" 42"	6' 14' 50"
2+25	"	"	"	3' 22" 42"	9' 37' 32"
2+50	"	"	"	3' 22" 41"	13' 00' 13"
2+75	"	"	"	3' 22" 42"	16' 22' 55"
3+00	25'	22' 04"	27' 38"	3' 22" 42"	19' 45' 37"
3+20.27	20' 27"	17' 57"	22' 45"	2' 44' 23"	22' 30' 00"

Dep. / P. = 6.1078934 min.



Caution: Contractor shall not use a sheepfoot roller for any work around C.M.P.A., since fill over pipe is thin.

Scale: 1" = 20'