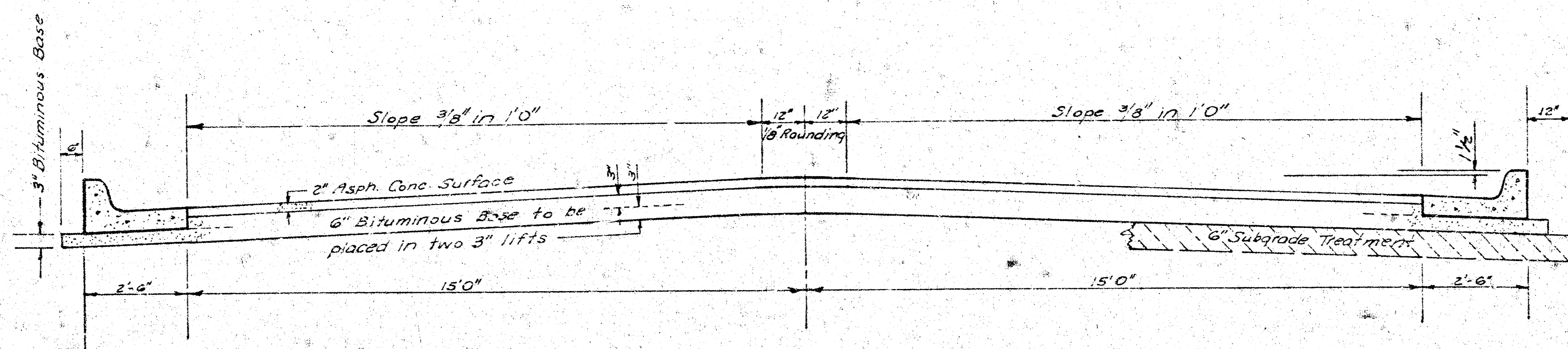


MAYBELLE PLACE

N.L. LOT 14, BLK. 10, WESTLINK VILLAGE 11th ADDN. - W.L. CALLAHAN DR.

DAKS574056



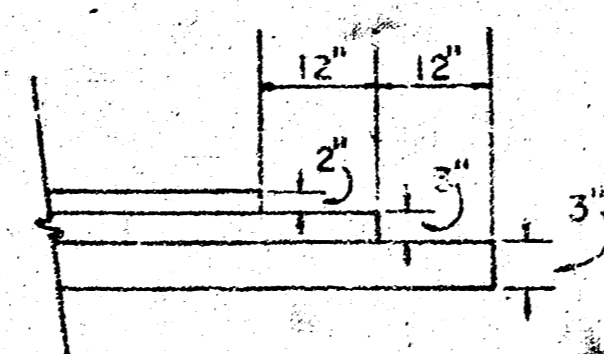
TYPICAL SECTION

35' ASPHALTIC CONCRETE PAVEMENT WITH BITUMINOUS BASE

*The A.C. Pavement between the comb curb & gutter shall be paid as Sq. Yds. 8" A.C. Pavement (6" Bituminous Base).
The Bituminous Base under the comb curb & gutter shall be paid as Sq. Yds. 3" Bituminous Base.*

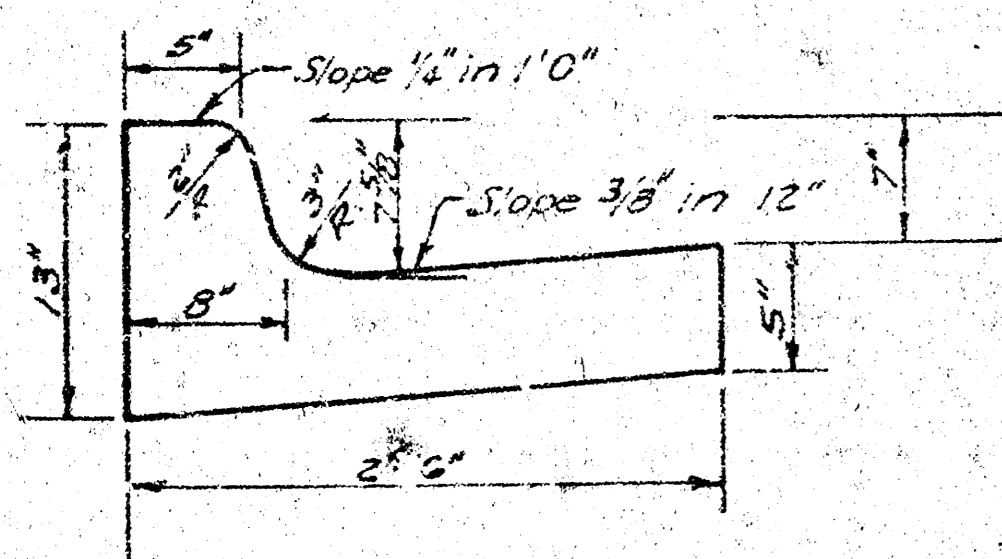
A TACK COAT OF EMULSIFIED ASPHALT (SS-1H) SHALL BE APPLIED AT AN APPROXIMATE RATE 0.05 GALLONS PER SQ YD BETWEEN LIFTS OF ASPHALTIC MATERIALS WHEN ORDERED BY THE ENGINEER. TACK COAT WILL NOT BE PAID FOR DIRECTLY AND SHALL BE CONSIDERED AS SUBSIDIARY TO PRICE BID FOR ASPHALTIC PAVEMENT.
BITUMINOUS BASE AND ASPHALTIC CONCRETE WEARING SURFACE SHALL BE PLACED WITH A LAYDOWN MACHINE HAVING AUTOMATIC ELECTRONIC CONTROLS FOR CROWN AND GRADE. CONSTRUCTION JOINTS IN EACH LIFT SHALL BE STAGGERED A MINIMUM DISTANCE OF 1' WITH JOINTS IN PRECEDING LIFTS AND PLACED SUCH THAT A JOINT WILL BE CONSTRUCTED ON THE CENTERLINE IN THE TOP LIFT.

DETAIL OF TRANSVERSE CONSTRUCTION JOINTS

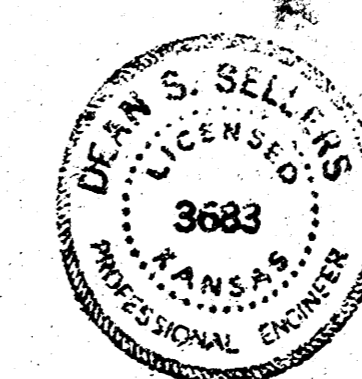
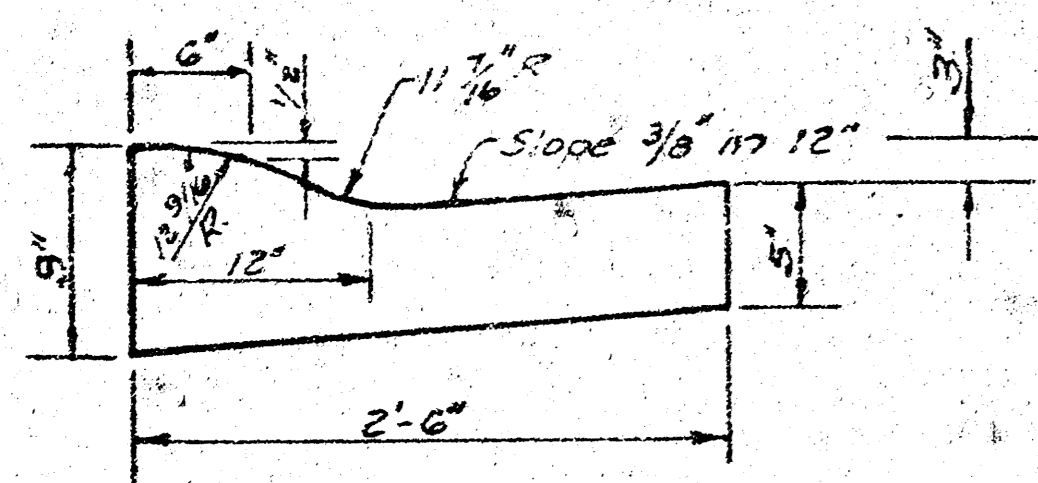


TRANSVERSE CONSTRUCTION JOINTS SHALL BE CONSTRUCTED IN FLEXIBLE BASE PAVEMENTS AT LOCATIONS WHERE PAVEMENT TEMPORARILY ENDS TO FACILITATE FUTURE PAVEMENT CONSTRUCTION AS SHOWN BY DETAIL. THE COST OF CONSTRUCTING THE TRANSVERSE CONSTRUCTION JOINTS SHALL NOT BE MEASURED OR PAID FOR DIRECTLY BUT SHALL BE INCLUDED IN THE BID PRICE FOR SQUARE YARDS OF ASPHALTIC CONCRETE PAVEMENT.

COMBINED CURB & GUTTER



ROLL TYPE CURB & GUTTER



CITY OF WICHITA KANSAS

DEPARTMENT of PUBLIC WORKS - Engineering Division.

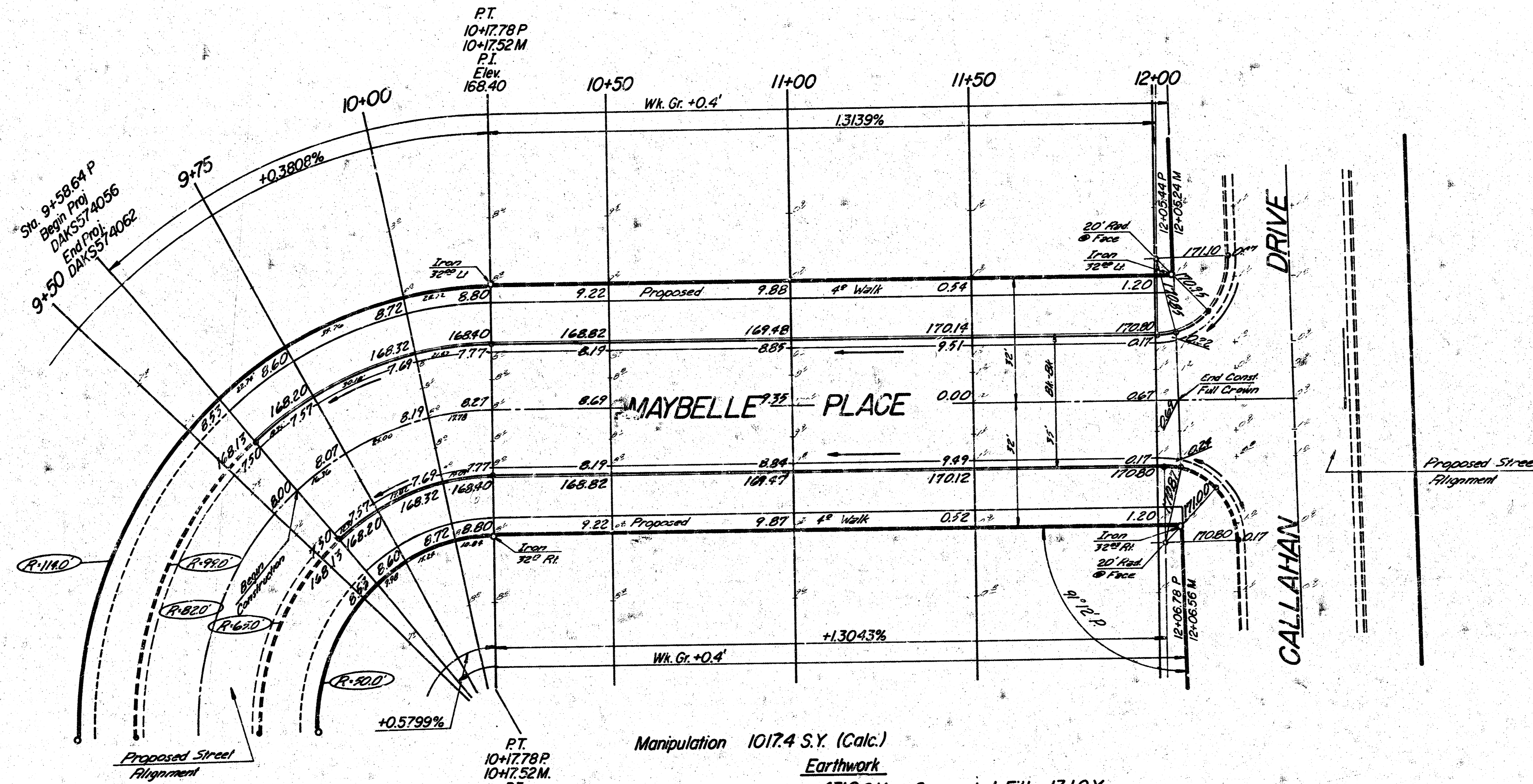
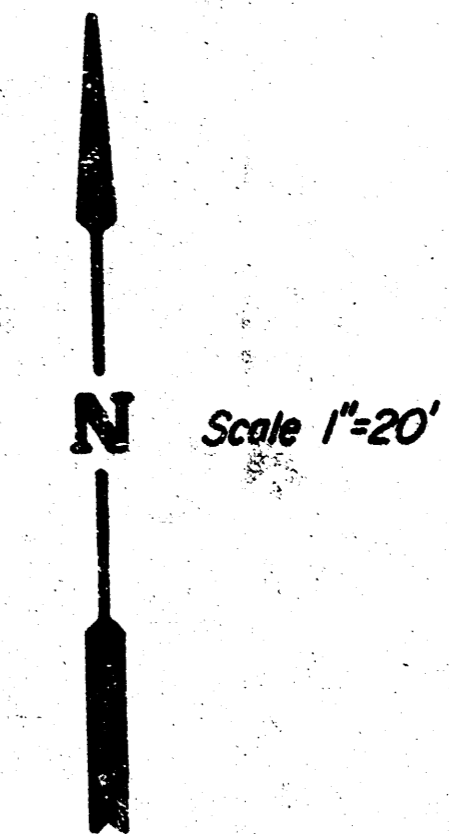
R. W. LINN CITY ENGINEER

DATE June 1976 Proj No. DAKS574056

FILMED FROM THE BEST AVAILABLE COPY.....

B-M

B.M. 16746 R.R. SPIKE W.S. POWER POLE 12' N. & 10.5' E. OF IRON AT N.L. THURMAN & W.L. TYLER @ IS @ MAYBELLE PLACE



Δ 41°12' R. = 82.0' T. = 30.92' L. = 99.14' LC. = 57.06'

CURVE DATA BASED ON E RAD. Δ 20° 11'

STA.	ARC.	CHORD LENGTH		DEFLECTION	TOTAL DEFLECTION
		OFF. COB.	OFF. PCB.		
9+50	-	-	-	-	0°00'00"
9+75	16.76	21.31	11.35	8°42'46"	8°42'46"
10+00	25.00	32.49	17.31	8°44'05"	17°26'51"
10+25	17.75	23.15	12.33	6°12'42"	23°39'33"

Def'n. = 80.96/187 ft/rad

Survey
 Plan
 Exc.
 Checked

TYPE OF SUB-GRADE TREATMENT SHALL BE DETERMINED BY THE ENGINEER. SUB-GRADE TREATMENT IS AVAILABLE OF LIME TREATMENT, CEMENT TREATMENT, SUB-GRADE MODIFICATION, OR ANY COMBINATION OF THESE.

NOTE TO FIELD ENGINEER & CONTRACTOR
 Grade parking and clear right-of-way for proposed sidewalk. Compact fill in sidewalk area. TO BE CONSTRUCTED BY "OTHERS".

Manipulation 1017.4 S.Y. (Calc.)
Earthwork
 Excavation 431.9 C.Y.
 +10% 43.2
 Total 475.1 C.Y.
 Compacted Fill 13.1 C.Y.
 +10% 1.3
 Total 14.4 C.Y.

Contractor to Contact K.G.I.E. For Location of Underground Lines.

Maybelle Place
 N.L. Lot 14, Blk. 10, Westlark Village 11th Addn.
 W.L. Callahan Drive
 DAKS574056