

B.M. 109.07 RR Spike E. side P. Pole 30.5' N. & May & 38.8' W. of & West St.

B.M. 109.82 RR Spike S. side H.L. Pole 30' S. of NL. Alcorn Industrial Adlt. & 70' E. & West St.

Total number and width of drives for project.

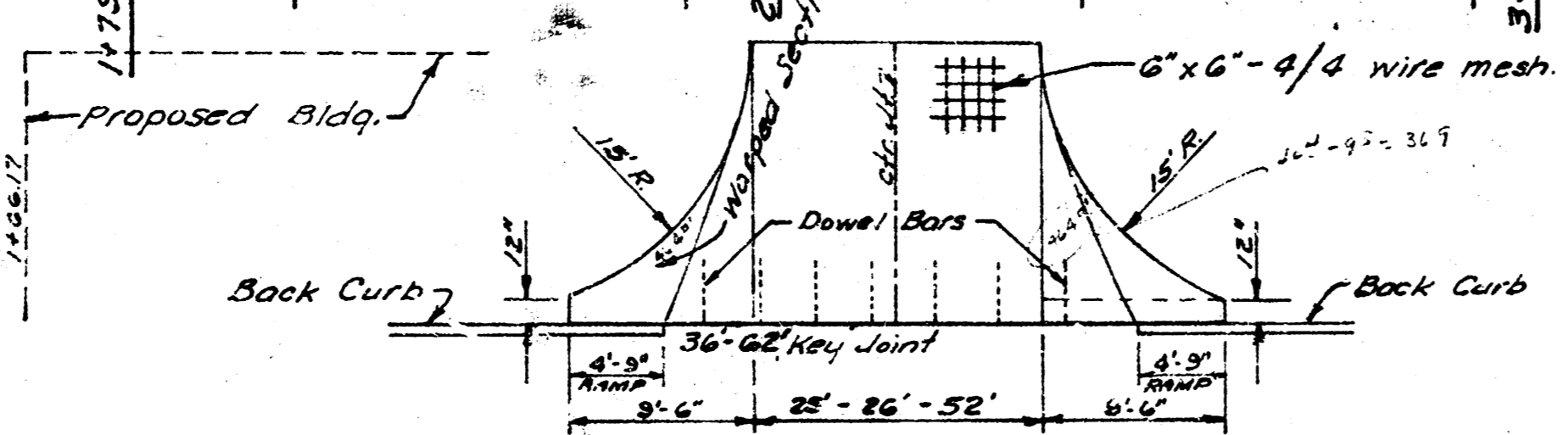
- 16 - 52' Drives
- 4 - 26' Drives
- 4 - 25' Drives

NOTE:
 Driveway locations for N. side same as shown on S. side.
 Contractor to verify all driveway locations with owner.

Install 66'-24" C.M.P. Field Engineer is to determine if existing 38'-24" C.M.P. is suitable for re-use. N. to 106.60 S. to 106.60

EXCAVATION		COMP. FILL	
PROPERTY	CITY	PROPERTY	CITY
2246	23	537	35
225	2	60	3
Total 2471 CY		657 CY	

6770 Sq. Yds. Cement Treated Subgrade (includes driveways)



DETAIL OF TRUCK DRIVE APPROACH
 8" Rein. Concrete



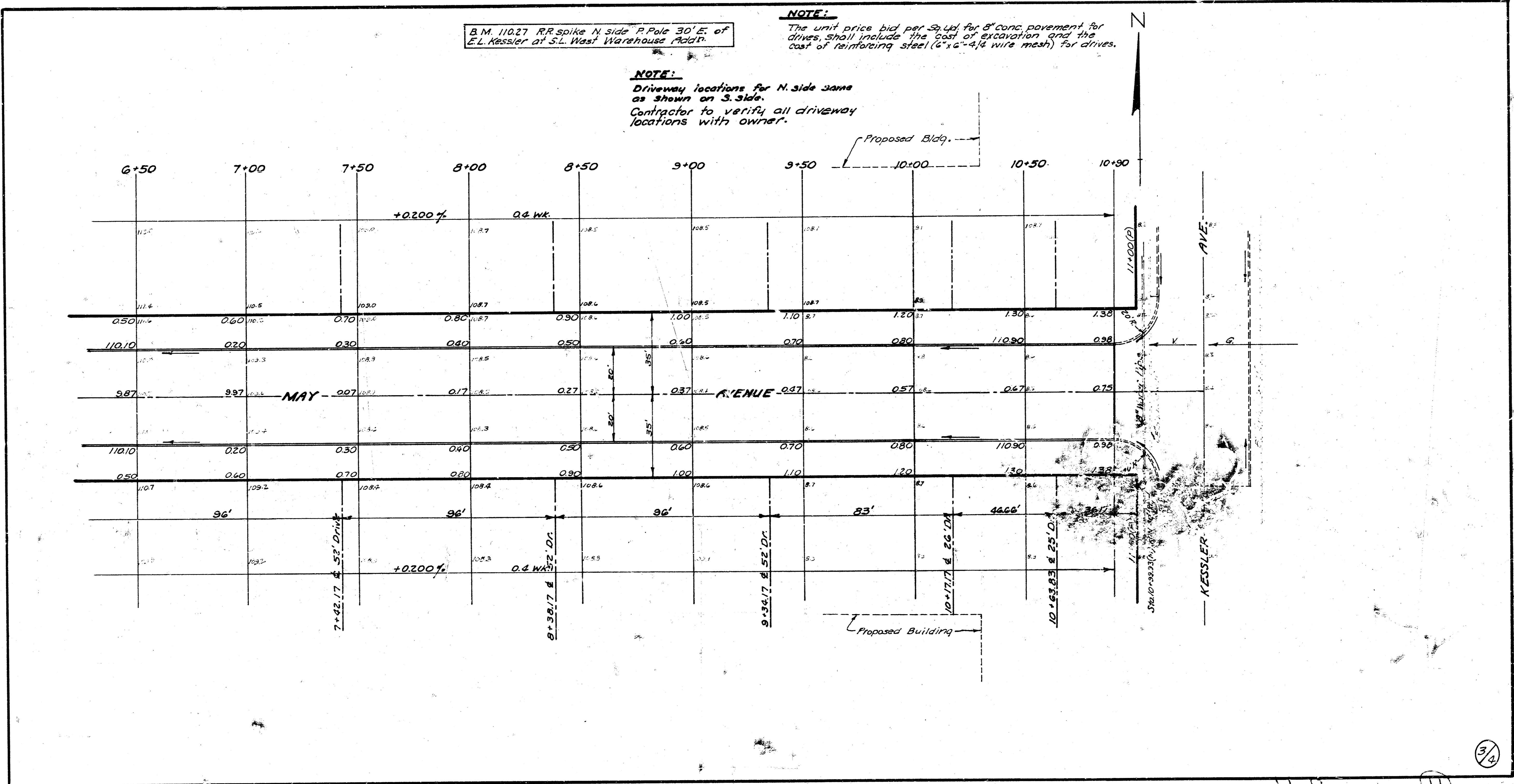
MAY AVENUE
 From EL. WEST STREET to W.L. KESSLER AVE.
 8" Conc. 40' & Curb
 R.W. LINN CITY ENGINEER
 CITY OF WICHITA KANSAS
 Date: Oct. 1972
 Project No. DAKS 572021

2/4

B.M. 11027 RR spike N side P. Pole 30' E. of
 E.L. Kessler at S.L. West Warehouse Addr.

NOTE:
 The unit price bid per Sq. Yd. for 8" conc. pavement for
 drives, shall include the cost of excavation and the
 cost of reinforcing steel (6"x6"-4/4 wire mesh) for drives.

NOTE:
 Driveway locations for N. side same
 as shown on S. side.
 Contractor to verify all driveway
 locations with owner.



3/4