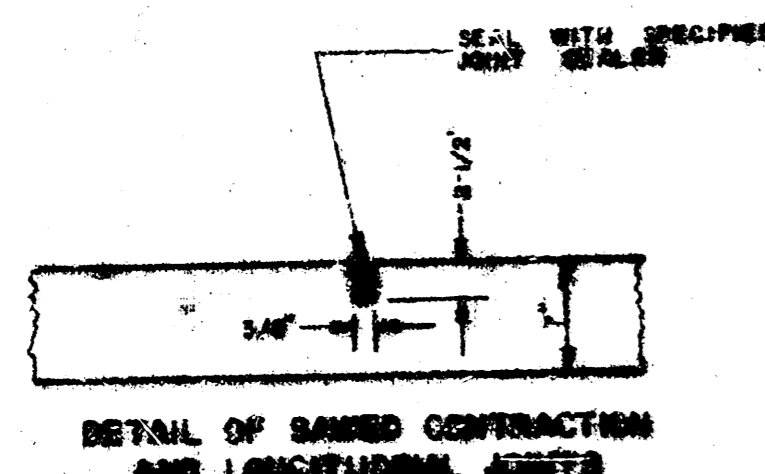
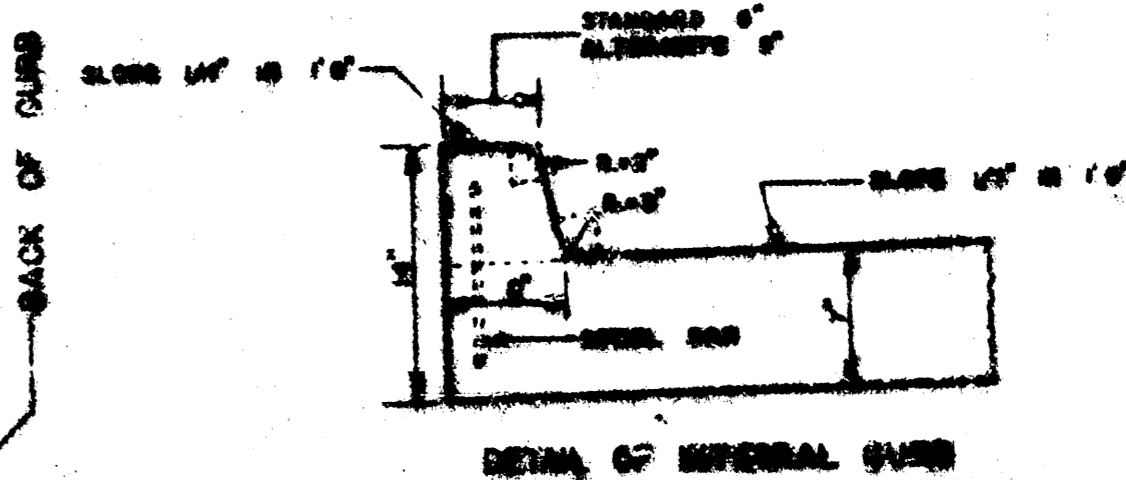
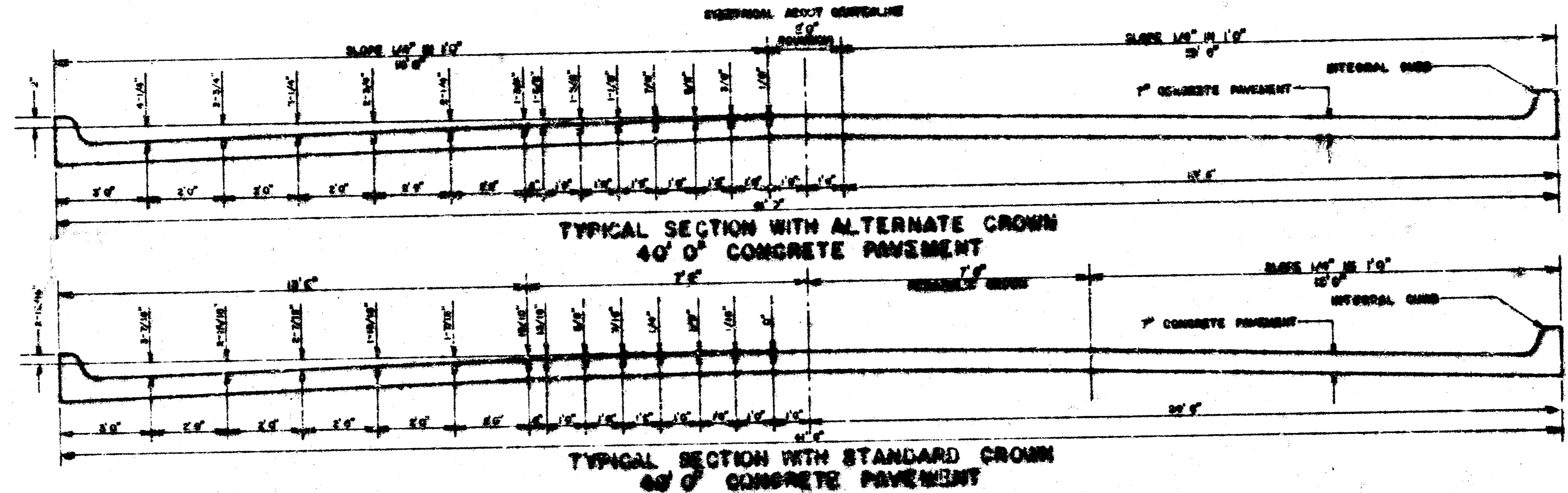
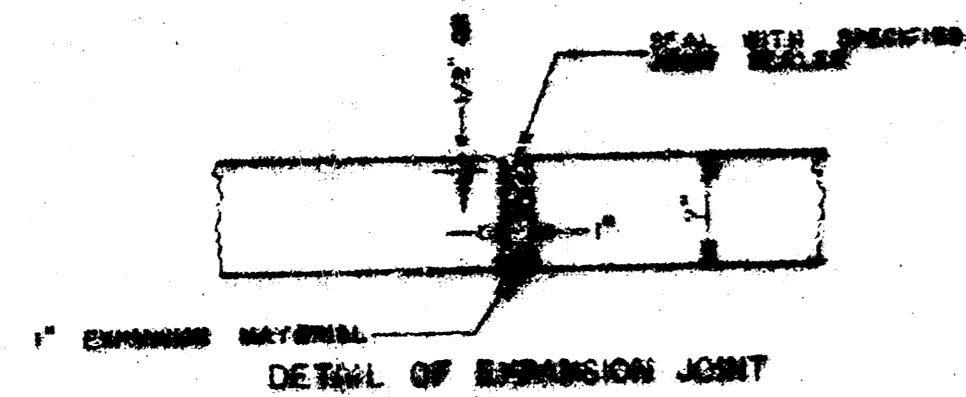


MAY STREET
E.L. K-42 HIGHWAY TO W.L. A.T. & S.F. RAILROAD
 PROJ. NO. DAKS 571015
 CITY OF WICHITA, KANSAS
 R. W. LIND, CITY ENGINEER

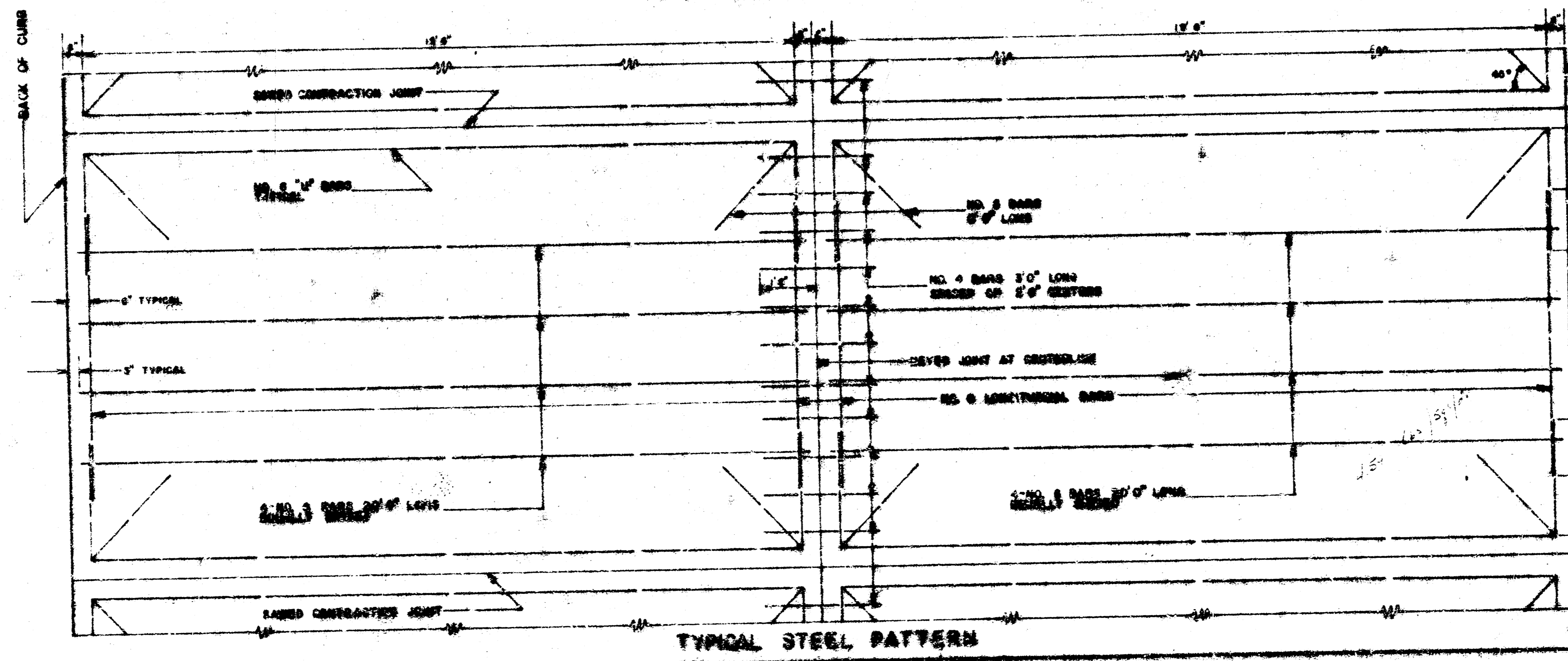
SAMED CONTRACTION JOINTS ARE TO BE CONSTRUCTED AT 30' INTERVALS EXCEPT WHERE AN EXPANSION JOINT IS USED.



EXPANSION JOINTS ARE TO BE CONSTRUCTED AT MAXIMUM INTERVALS OF 150' 0\"/>



INTERNAL CURB SHALL BE CUT THROUGH TO THE PAVEMENT IN UNIFORM LENGTHS OF NOT MORE THAN TEN FEET INTERVALS BETWEEN EXPANSION JOINTS. EXPANSION JOINTS IN THE SAME THICKNESS AS THE EXPANSION JOINTS IN THE PAVEMENT SHALL BE CONSTRUCTED IN THE INTERNAL CURB AT THE SPECIFIED LOCATIONS. NUMBER 4 OR NUMBER 6 BARS SHALL BE INSTALLED IN THE INTERNAL CURB AS SHOWN ON APPROXIMATELY 2' 0\"/>



Survey D.C.D. 11-20
 Drawn by J.A.
 Checked by J.A.

