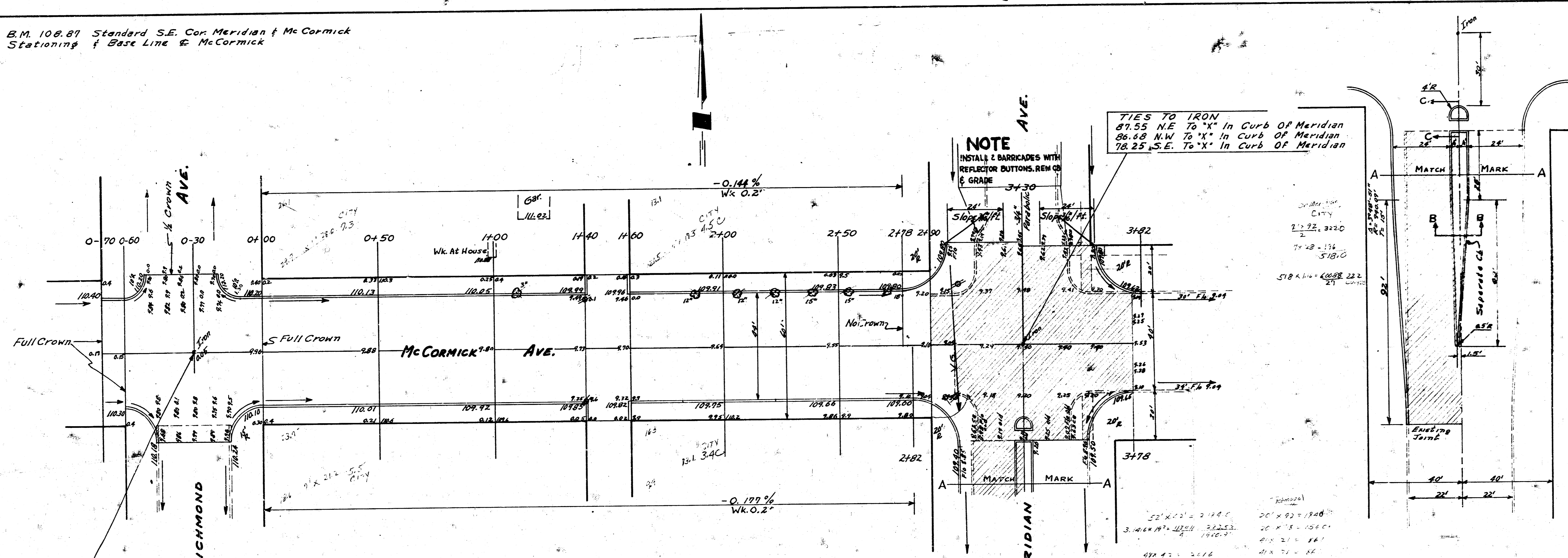
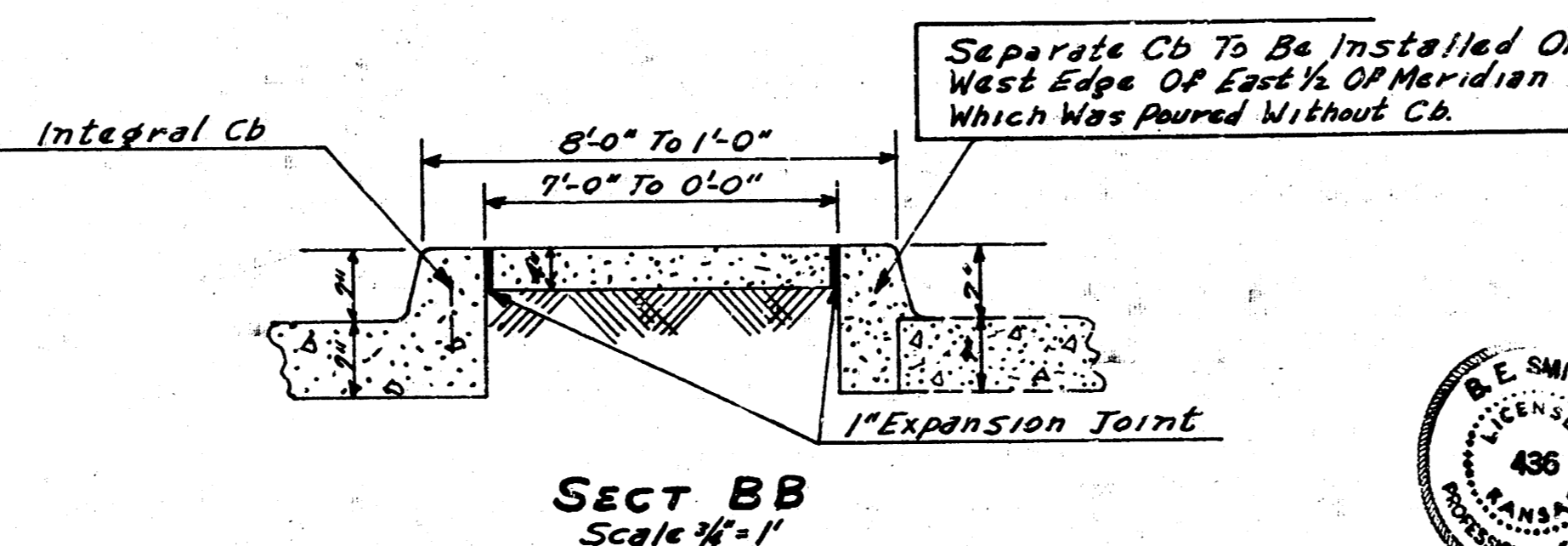
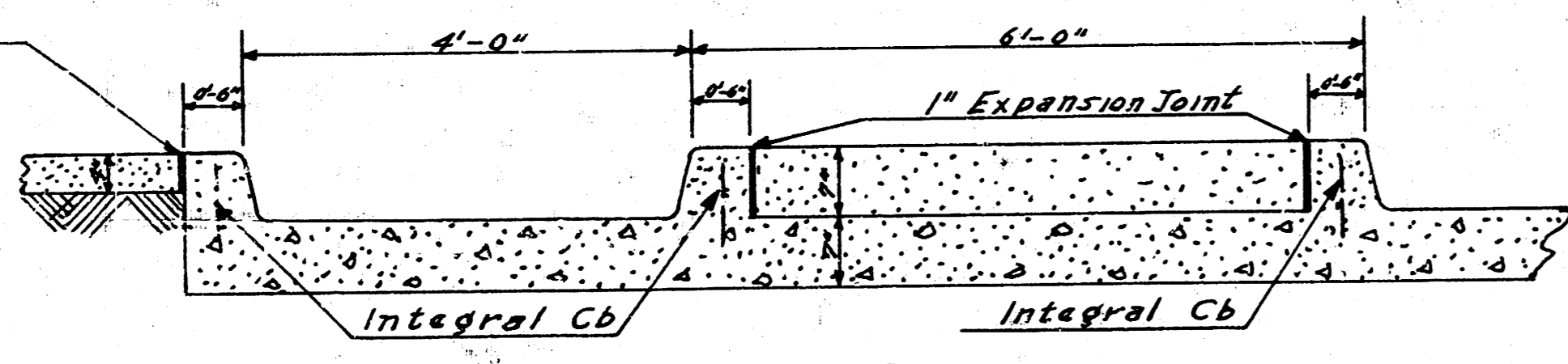


B.M. 106.87 Standard S.E. Cor Meridian & McCormick
 Stationing & Base Line & McCormick

Survey
 Plan
 Checked 27



TIES TO IRON
 33.87 S.E. To 'X' On E. Cb.
 33.64 S.W. To 'X' On W. Cb.
 30.01 S. To N. End W. Slab



RESIDENTY
 252.3
 147.2
 299.2

CITY
 181.4
 161.1
 176.5

WIDEN
 192.5
 132.2
 176.5

176.5

Mc CORMICK
 EL MERIDIAN To WL RICHMOND
 30' CONC. f. Cb. Widen To 44'
 CITY OF WICHITA KAN.
 BE SMITH CITY ENGINEER
 JULY 1955 Proj No. CM-7-251



2/3