

32ND. STREET :  
PENSTEMON :

PAVING PLANS FOR  
**MEDITERRANEAN PLAZA COMMERCIAL**  
FROM THE EAST LINE OF ROCK ROAD TO THE EAST LINE OF PENSTEMON  
FROM A POINT 526.73 FEET SOUTH OF THE SOUTH LINE OF 32ND. STREET NORTH TO THE SOUTH LINE OF 32ND. STREET NORTH  
**PROJECT NO.**

**472-76-245-81648-000-000-001**

CITY OF WICHITA, KANSAS  
MICHAEL E. LINDEBAK, CITY ENGINEER  
MAY, 1988

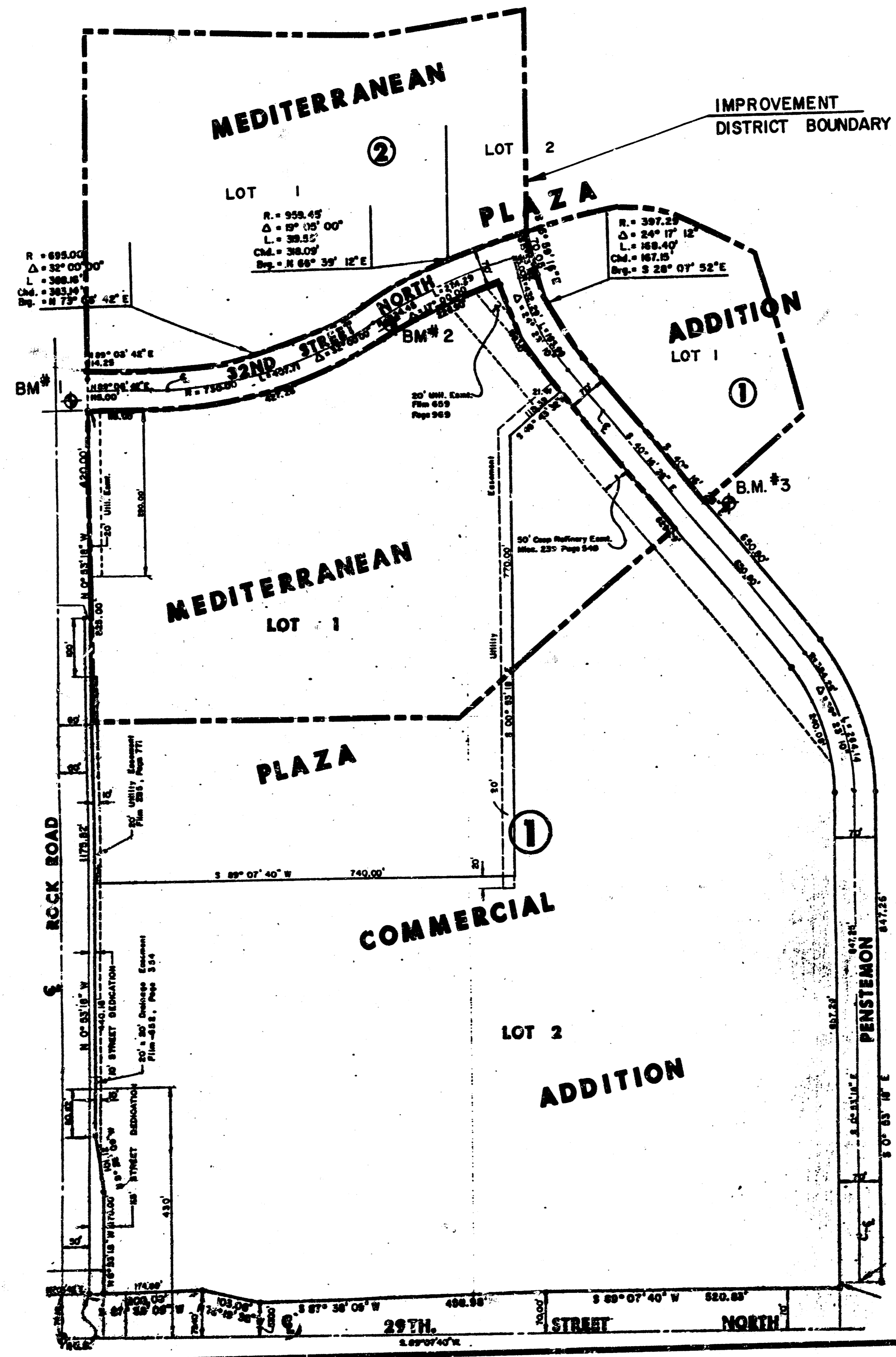
**GENERAL NOTES**

- CURB AND GUTTER WITH WIDENED GUTTER TO BE PAID AS COMBINED CURB AND GUTTER.
- ALL DRAINAGE STRUCTURES "BY OTHERS".
- THE CONTRACTOR SHALL BE RESPONSIBLE FOR PRESERVING PROPERTY IRONS. THE CONTRACTOR SHALL BE REQUIRED TO RE-ESTABLISH ANY PROPERTY IRONS WHICH ARE DAMAGED OR DESTROYED BY HIS CONSTRUCTION OPERATIONS. SUCH IRONS SHALL BE RE-ESTABLISHED BY A LICENSED LAND SURVEYOR OR A LICENSED PROFESSIONAL ENGINEER IN ACCORDANCE WITH STATE LAWS.
- I-A INLET HOOKUPS TO BE BID EACH. SIZE VARIES.
- ALL CONCRETE SHALL BE STANDARD PAVING MIX UNLESS OTHERWISE NOTED.
- EXISTING UTILITIES AND THEIR LOCATIONS, AS SHOWN ON THE PLANS, REPRESENT THE BEST INFORMATION OBTAINABLE FOR DESIGN. LOCATION INFORMATION HAS BEEN OBTAINED FROM THE VARIOUS UTILITY COMPANIES AND IS EITHER FROM COMPANY RECORD DRAWINGS OR COMPANY PROVIDED FIELD LOCATIONS. THE PLAN LOCATIONS SHOWN ARE NOT GUARANTEED. ADDITIONAL EXISTING UTILITIES MAY ALSO BE ENCOUNTERED.
- CONTRACTOR WILL BE REQUIRED TO PROVIDE A MINIMUM ADVANCE NOTICE OF TWENTY-FOUR (24) HOURS TO UTILITY COMPANIES PRIOR TO STARTING ANY EXCAVATION AS FOLLOWS:  
  

FARMLAND INDUSTRIES (COOP)	1-918-333-4111
BELL TELEPHONE COMPANY	1-316-571-2115
CABLEVISION	262-4270 or 262-2061
KPL GAS SERVICE	262-7511
KANSAS GAS & ELECTRIC	264-1141
CITY OF WICHITA WATER DEPARTMENT	262-4908
CITY OF WICHITA SEWER DEPARTMENT	268-4071
- A SAW CUT OF AT LEAST ONE-HALF THE DEPTH OF EXISTING SURFACE COURSES OR ONE-FOURTH THE DEPTH OF THE EXISTING TOTAL PAVEMENT THICKNESS SHALL BE PROVIDED AT LOCATIONS WHERE PROPOSED CONSTRUCTION ADJUTS AN EXISTING SURFACE COURSE OR PAVEMENT FOR WHICH PARTIAL REMOVAL OF THAT SURFACE OR PAVEMENT IS REQUIRED. SAVED JOINT TO FACILITATE REMOVAL WITHIN THREE (3) FEET OF EXISTING JOINTS WILL NOT BE PERMITTED AND FOR SUCH INSTANCES THE LIMITS OF REMOVAL SHALL EXTEND TO THE EXISTING JOINT.

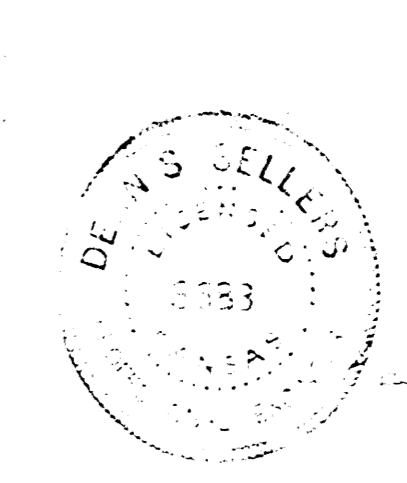
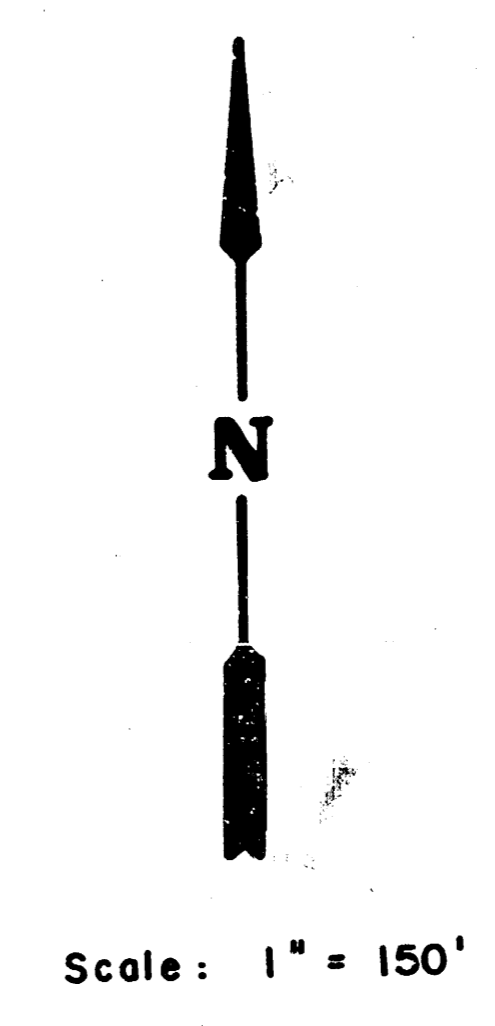
**BENCH MARKS**

- B.M. #1 R.R. Spike W. Face Power Pole S.E. corner int. of 32nd St. N. & Rock Road Elev. = 208.86
- B.M. #2 " " Top Curb Theater Parking lot; Station 6 + 08.32nd St. N. 40' right Elev. = 212.22
- B.M. #3 " " Lost 40' + Rt. of Sta. 11 + 91.39 Penstemon Street 5' NE of PT Iron on Lot 17, Block 1, Mediterranean Plaza. Elev. = 223.71



**INDEX TO DRAWINGS**

SHEET NO.	DESCRIPTION
1	TITLE SHEET
2-3	PAVING DETAILS
4-5	32ND. STREET NORTH
6	PENSTEMON STREET
7-9	CROSS SECTIONS
10	FINAL PLAT



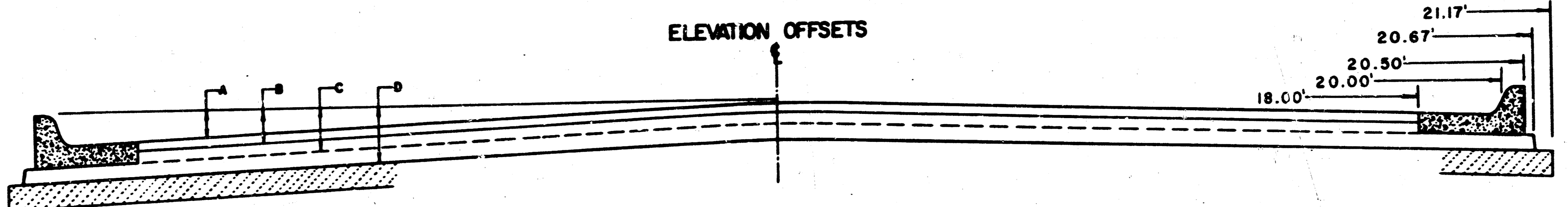
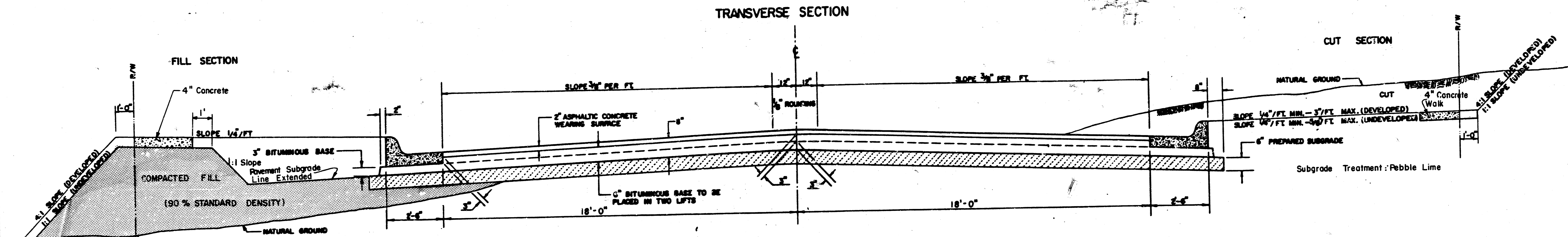
**MEDITERRANEAN PLAZA COMMERCIAL PAVING PLANS**

Design: F.F.  
Drawn by: F.F., E.C.G.  
Checked by: D.S.S.  
Date: MAY 1988  
Job no.

MID-KANSAS ENGINEERING CONSULTANTS PA  
3500 NORTH ROCK ROAD  
BUILDING #80C  
WICHITA, KANSAS 67226

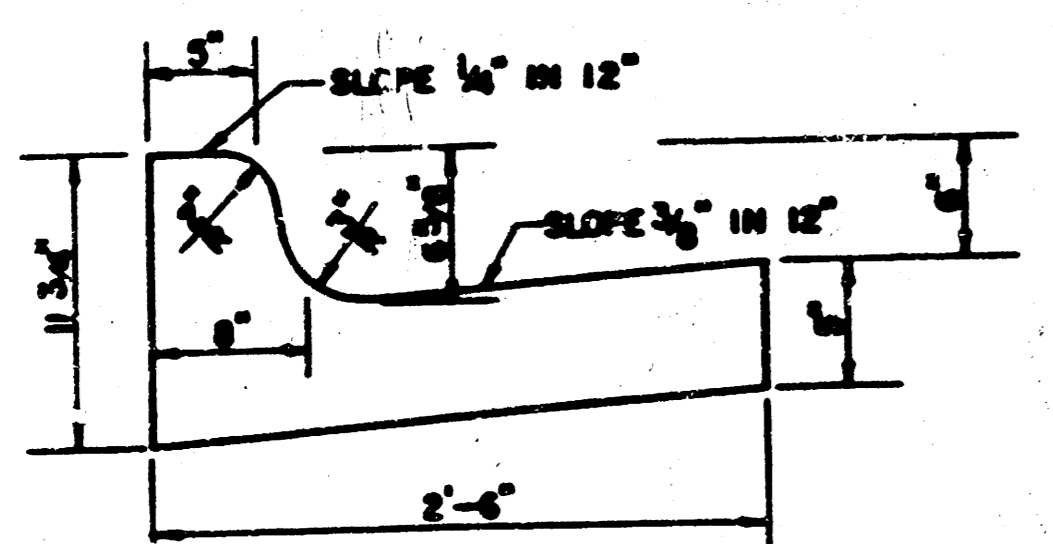
Sheet 1 of 10  
682-6561

# TYPICAL 4' PAVEMENT DETAILS

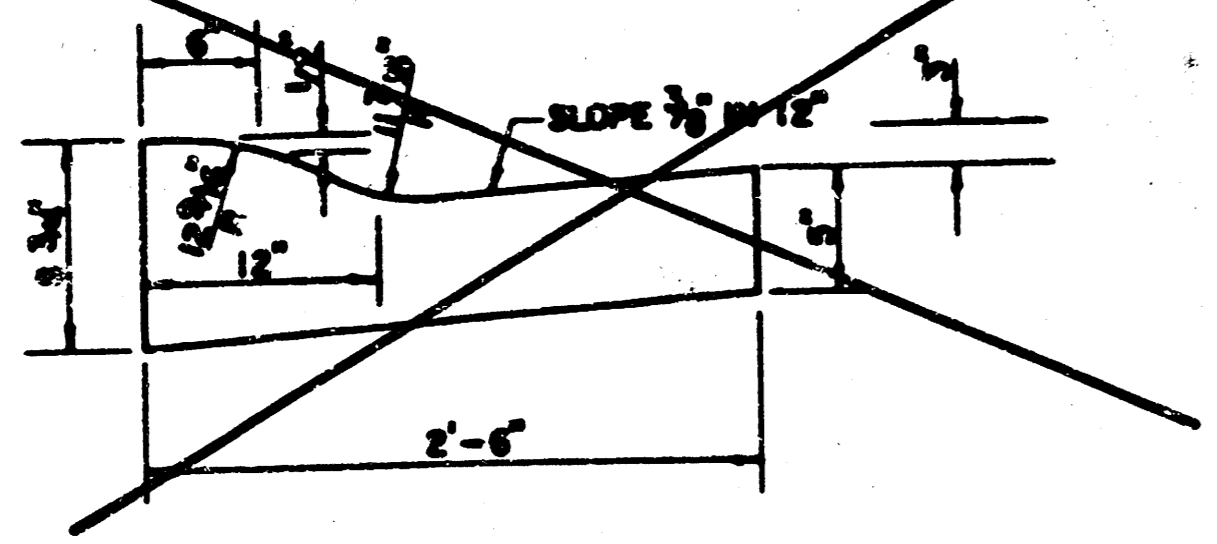


	DISTANCE FROM CENTERLINE (LT. & RT.)													
	0	2	4	6	8	10	12	14	16	18	20	20.5	20.67	21.17
A: TOP OF CURBS TO TOP OF SURFACE LIFT	-.05	-.01	.05	.11	.18	.24	.30	.36	.43	.49	—	—	—	—
B: TOP OF CURBS TO TOP OF UPPER BASE LIFT	.11	.16	.22	.28	.34	.40	.47	.53	.59	.65	—	—	—	—
C: TOP OF CURBS TO TOP OF LOWER BASE LIFT	.36	.41	.47	.53	.59	.65	.72	.78	.84	.90	.97	.98	.99	—
D: TOP OF CURBS TO TOP OF SUBGRADE	.61	.66	.72	.78	.84	.90	.97	1.03	1.09	1.15	1.22	1.23	1.24	1.25

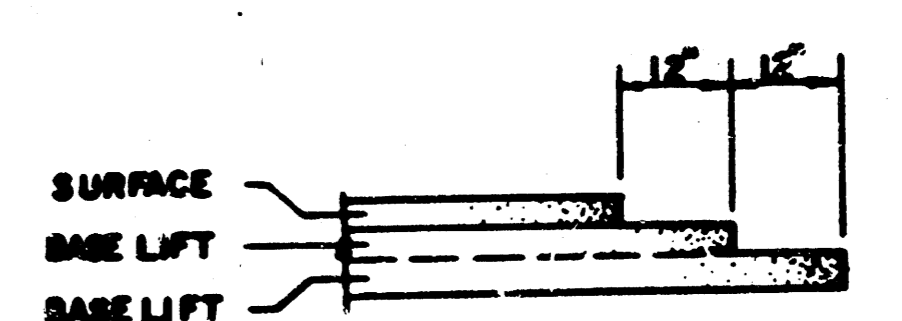
## COMBINED CURB & GUTTER



## ROLL TYPE COMBINED CURB & GUTTER



## TRANSVERSE CONSTRUCTION JOINTS



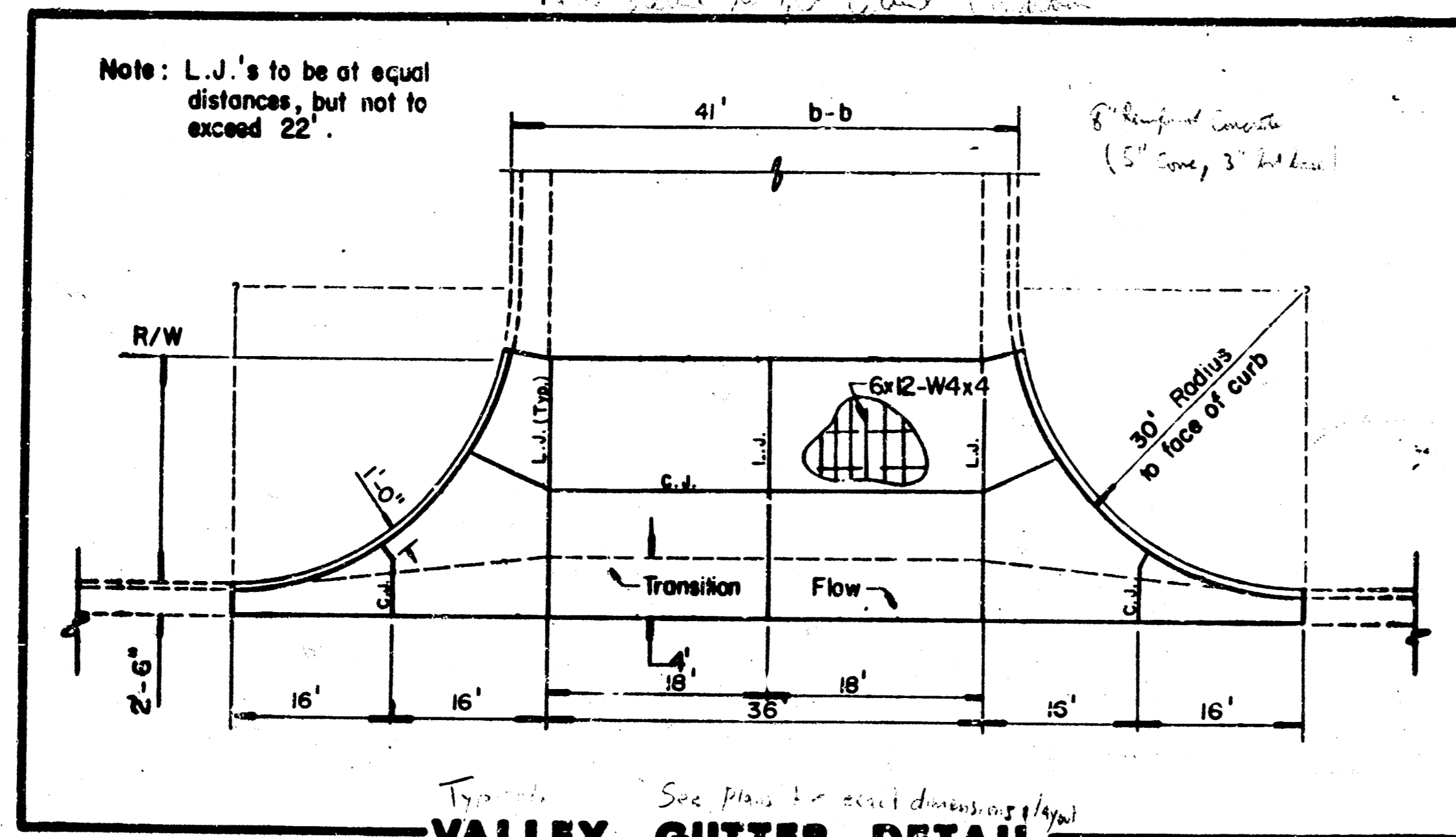
TRANSVERSE CONSTRUCTION JOINTS SHALL BE CONSTRUCTED IN FLEXIBLE BASE PAVEMENTS AT LOCATIONS WHERE PAVEMENT JOINTS EXISTING FLEXIBLE BASE PAVEMENT AS SHOWN BY THE DETAIL. ALL COSTS ASSOCIATED WITH THE CONSTRUCTION OF THE TRANSVERSE JOINT SHALL BE INCLUDED IN THE BID PRICE FOR SQUARE YARDS 8" ASPHALTIC CONCRETE (6" BITUMINOUS BASE).

## GENERAL NOTES

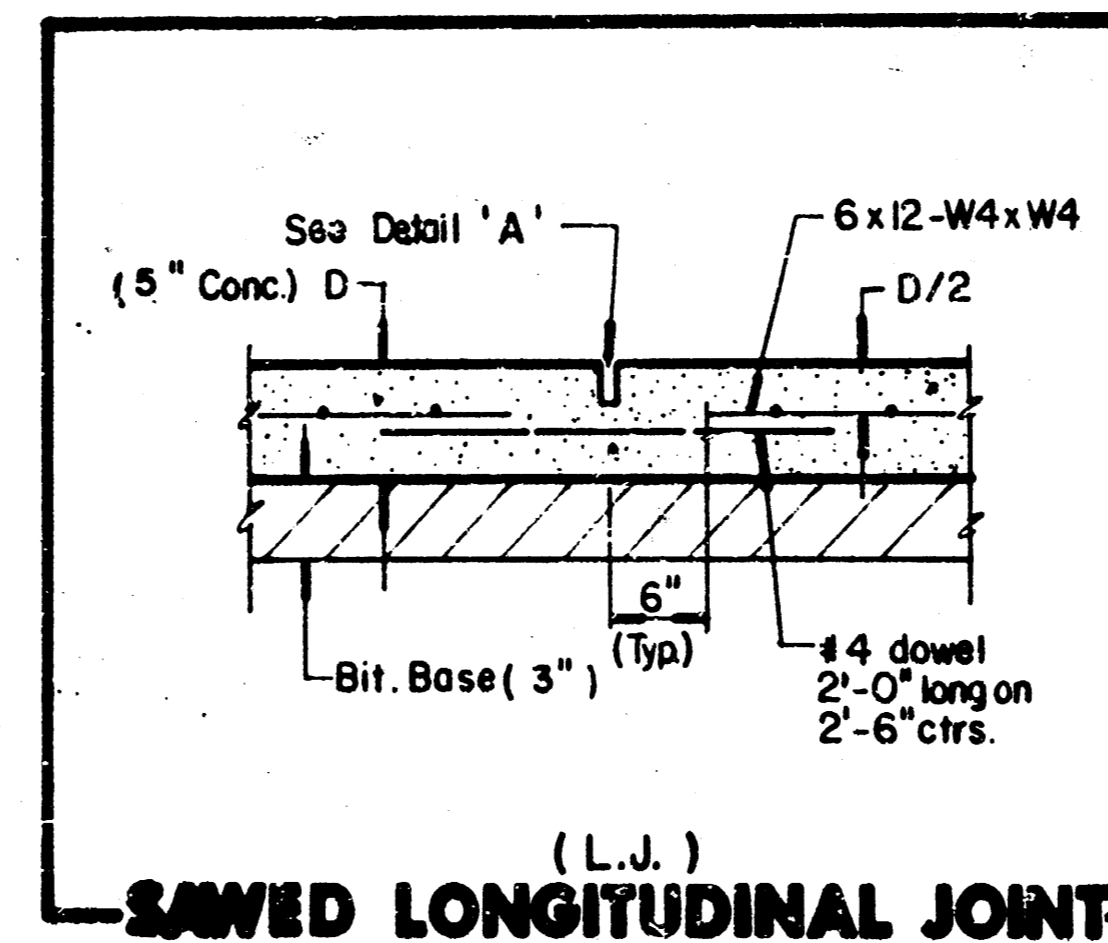
- 1) THE ASPHALTIC CONCRETE PAVEMENT BETWEEN THE COMBINED CURB AND GUTTER SHALL BE PAID AS SQUARE YARDS OF 8" ASPHALTIC CONCRETE (6" BITUMINOUS BASE).
- 2) THE BITUMINOUS BASE UNDER AND BEHIND THE COMBINED CURB AND GUTTER SHALL BE PAID AS SQUARE YARDS OF 3" BITUMINOUS BASE.
- 3) A TACK COAT OF EMULSIFIED ASPHALT (SC-1H OR CS-1H) SHALL BE APPLIED AT AN APPROXIMATE RATE OF 0.50 GALLONS PER SQUARE YARD BETWEEN EACH LIFT OF ASPHALTIC MATERIAL.
- 4) BITUMINOUS BASE AND ASPHALTIC CONCRETE WEARING SURFACE SHALL BE PLACED WITH A LAYDOWN MACHINE HAVING AUTOMATIC CONTROLS FOR LINE AND GRADE.
- 5) CONSTRUCTION JOINTS IN EACH LIFT SHALL BE STAGGERED A MINIMUM DISTANCE OF ONE (1) FOOT FROM JOINTS IN PRECEDING LIFTS AND PLACED SO THAT A JOINT WILL BE CONSTRUCTED IN THE CENTERLINE OF THE TOP LIFT.
- 6) CONTRACTOR TO BID ONLY ONE SUBGRADE TREATMENT ALTERNATE WHEN ALTERNATES ARE PROVIDED IN THE PROPOSAL AND CONTRACT. THE ALTERNATE CHOSEN BY THE SUCCESSFUL BIDDER SHALL BE USED IN CONSTRUCTING THIS PROJECT.

2/10

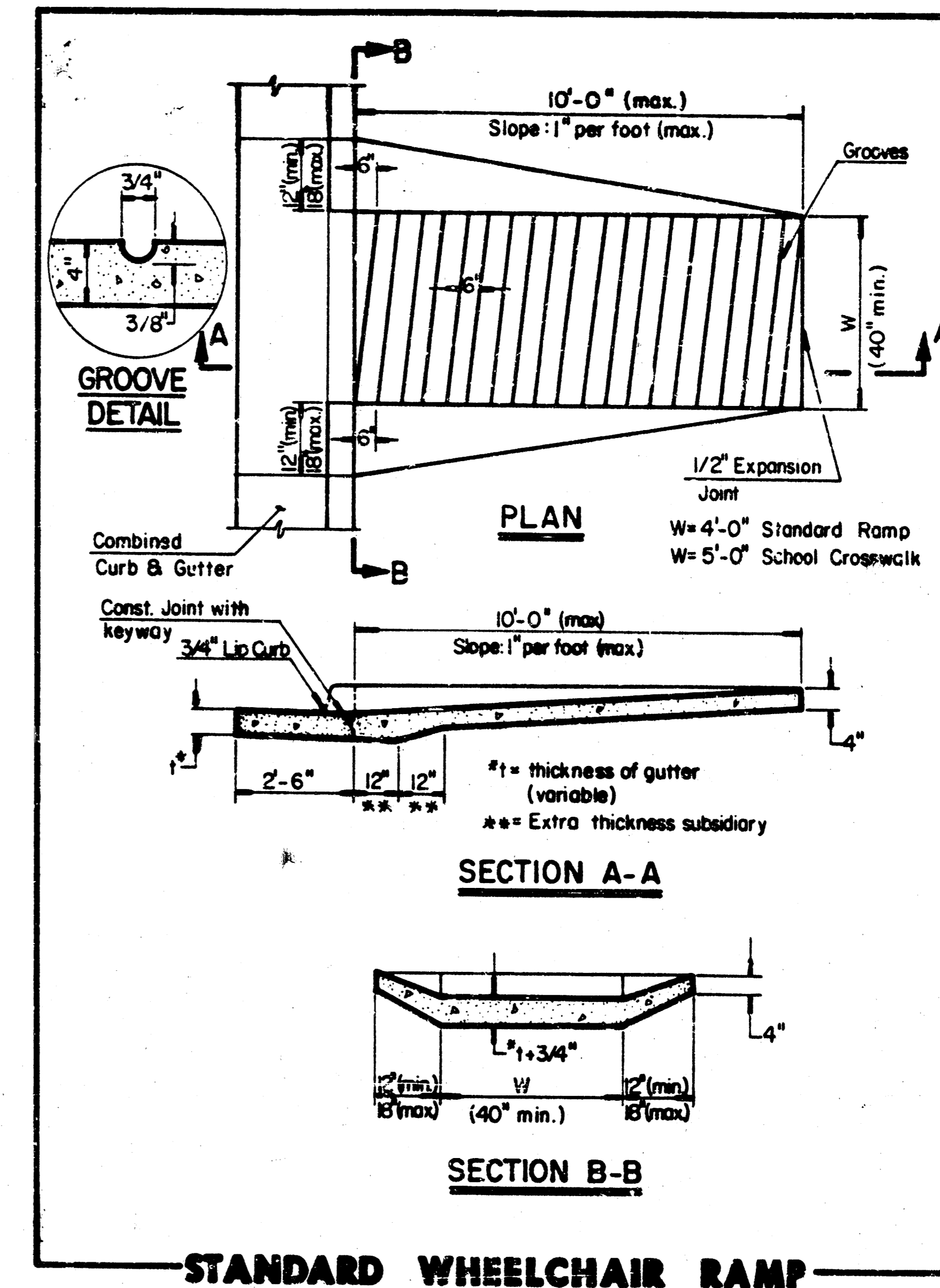
8 INCH RESIDENTIAL ASPHALTIC CONCRETE PAVEMENT WITH 6 INCH BITUMINOUS BASE  
CITY OF WICHITA, KANSAS  
PROJECT NUMBER  
472-76-245-81648-000-000-001



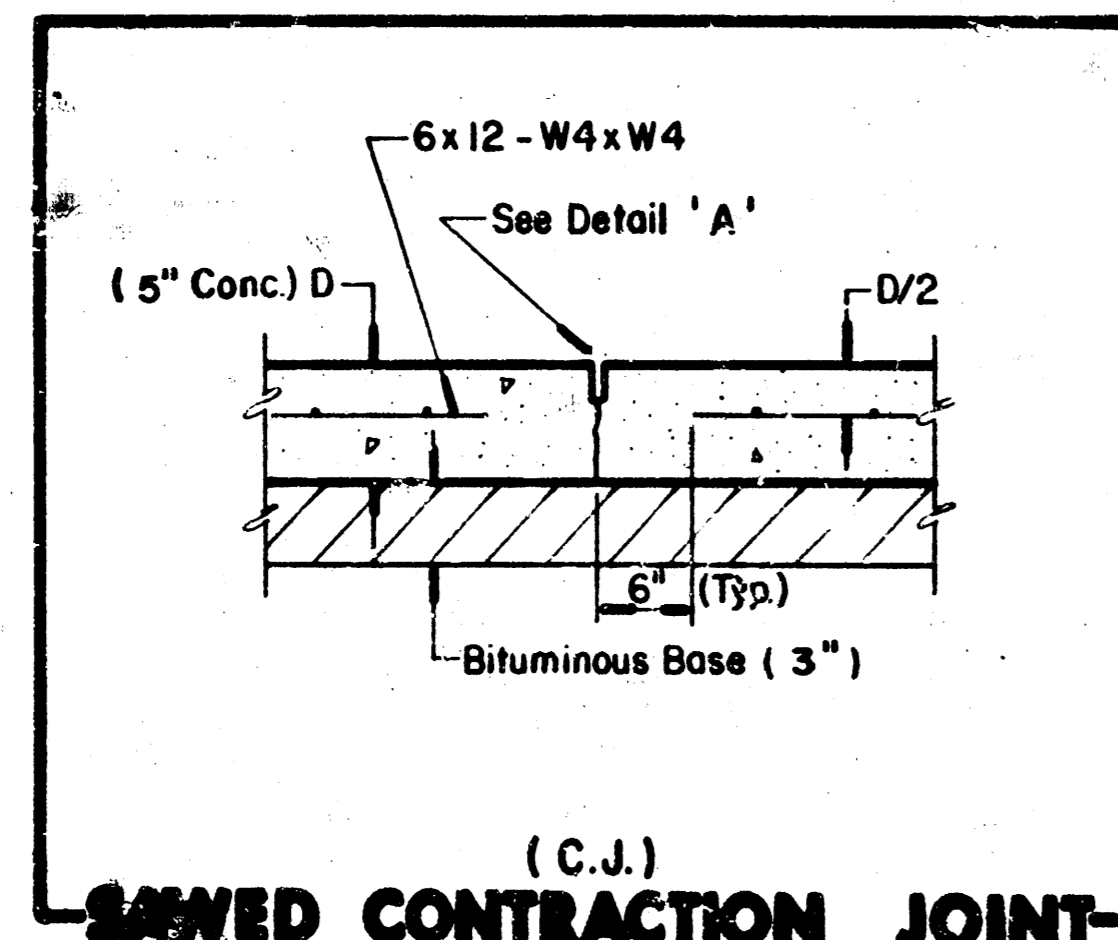
**VALLEY GUTTER DETAIL**  
 (32 nd. Street North & Penstemon Intersection)



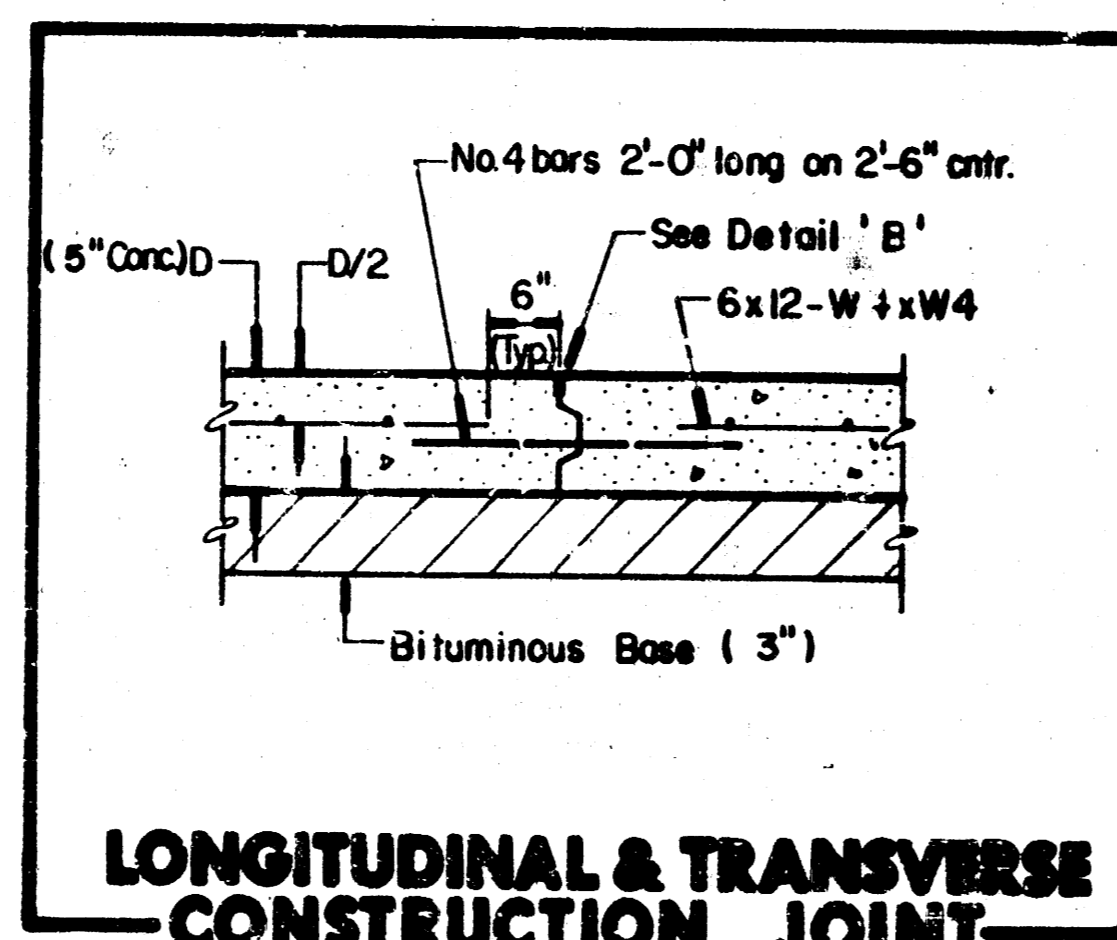
**SAWED LONGITUDINAL JOINT**



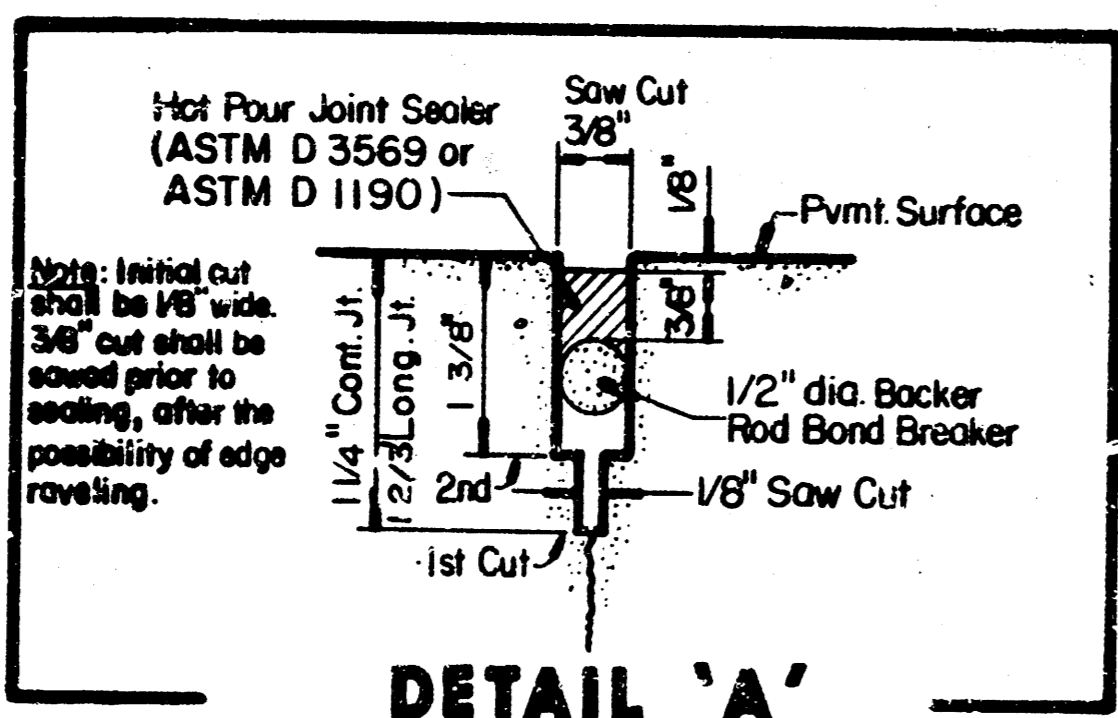
**STANDARD WHEELCHAIR RAMP**



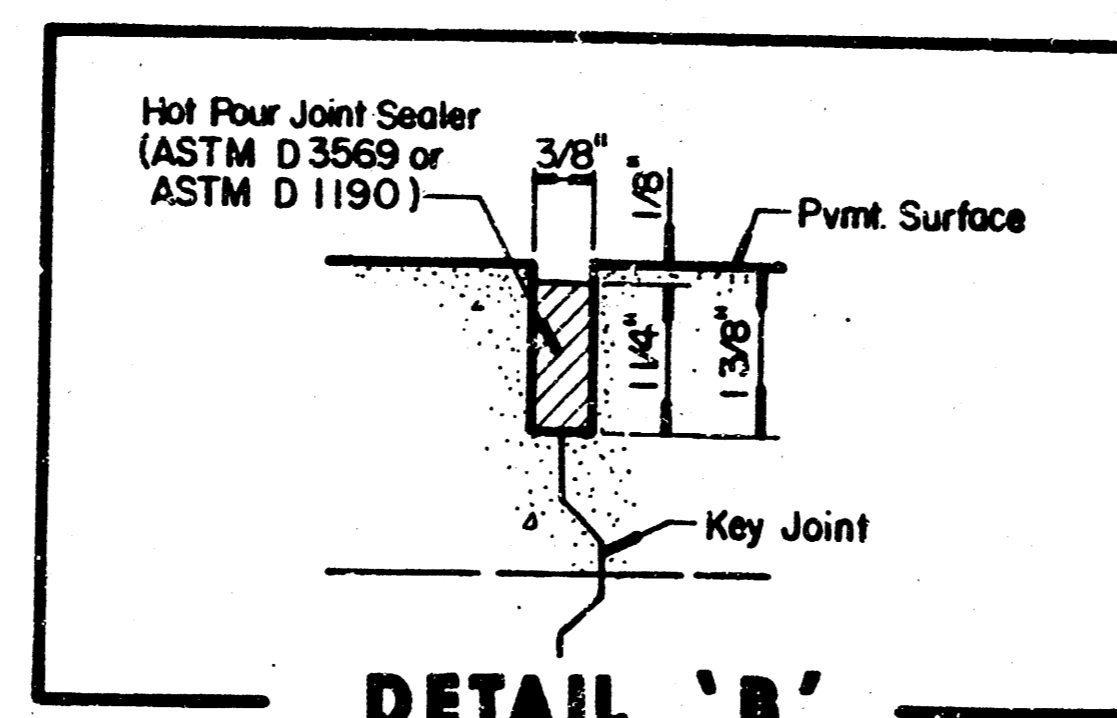
**SAWED CONTRACTION JOINT**



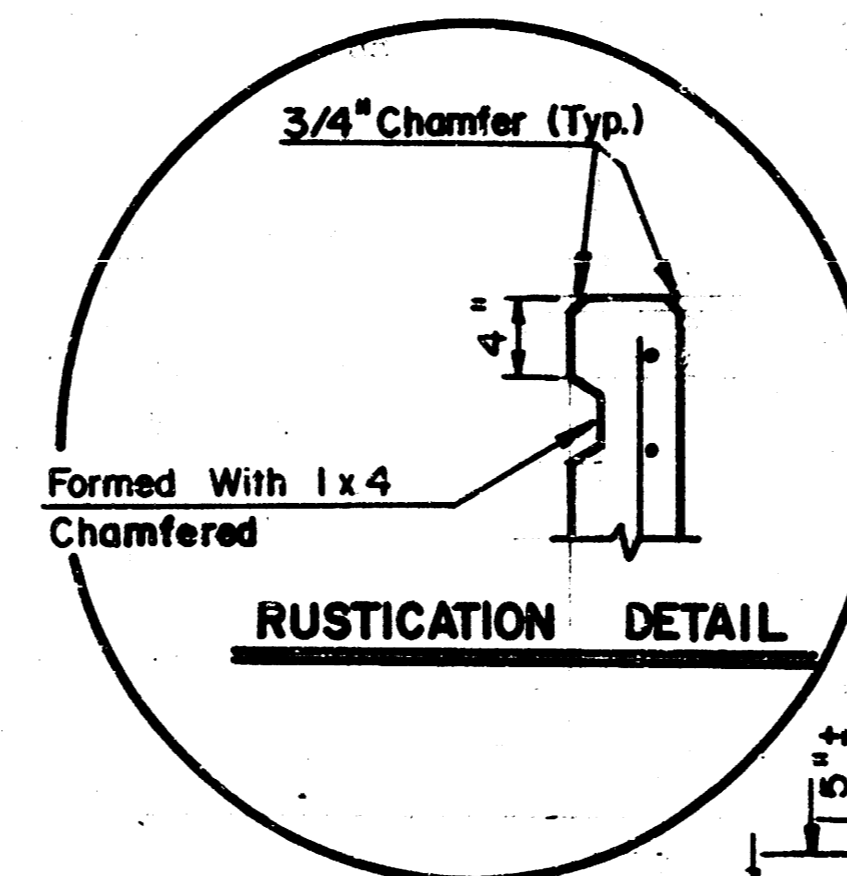
**LONGITUDINAL & TRANSVERSE CONSTRUCTION JOINT**



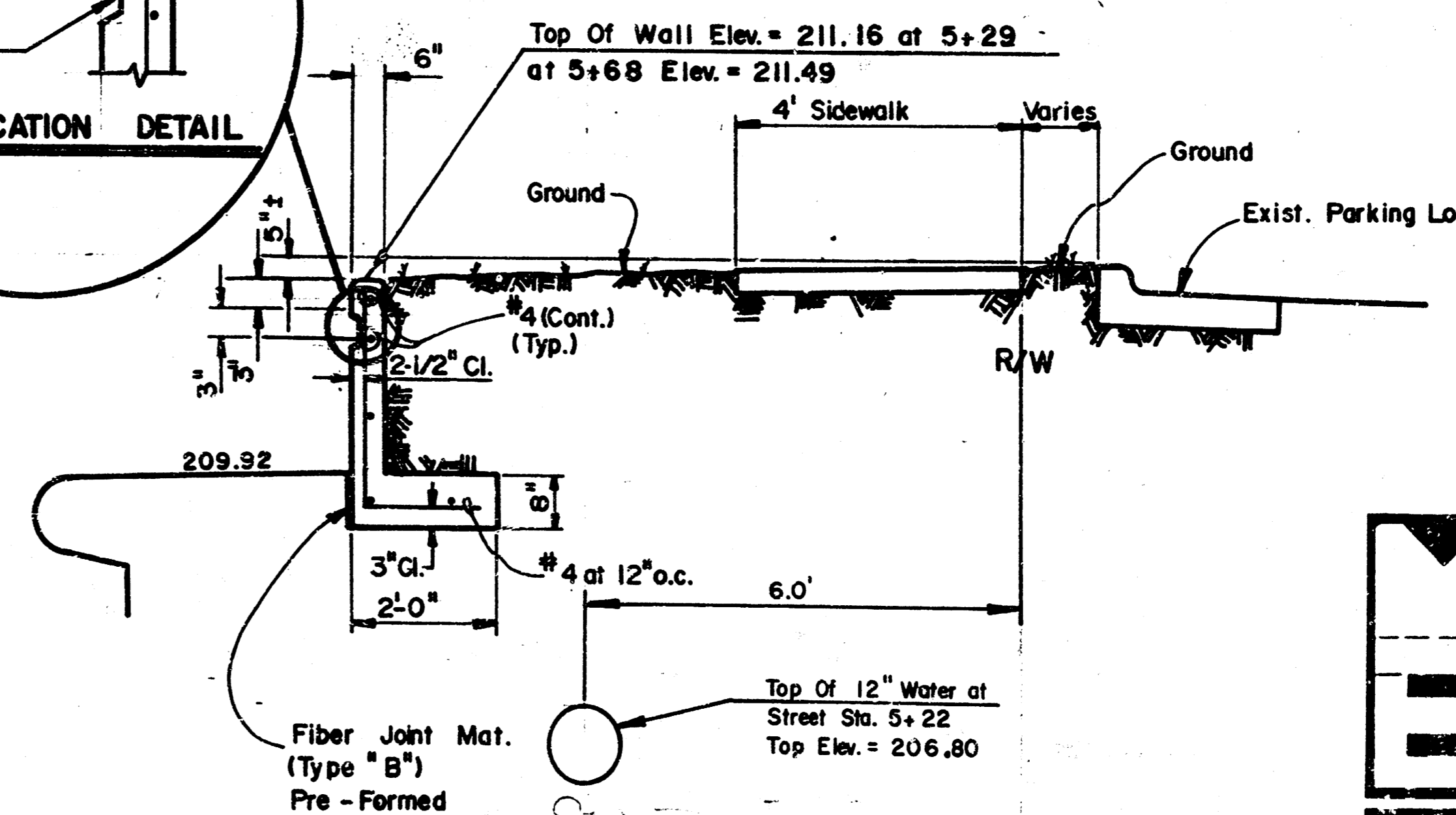
**DETAIL 'A'**



**DETAIL 'B'**



**RUSTICATION DETAIL**

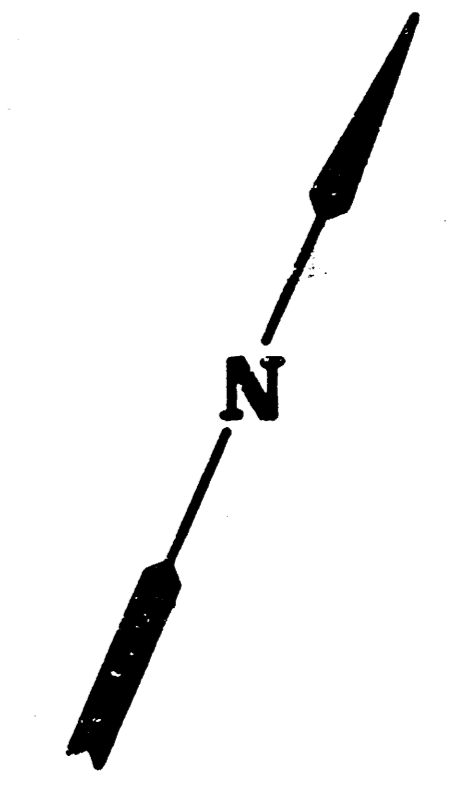


**RETAINING WALL**  
 STA. 5+29 TO STA. 5+68

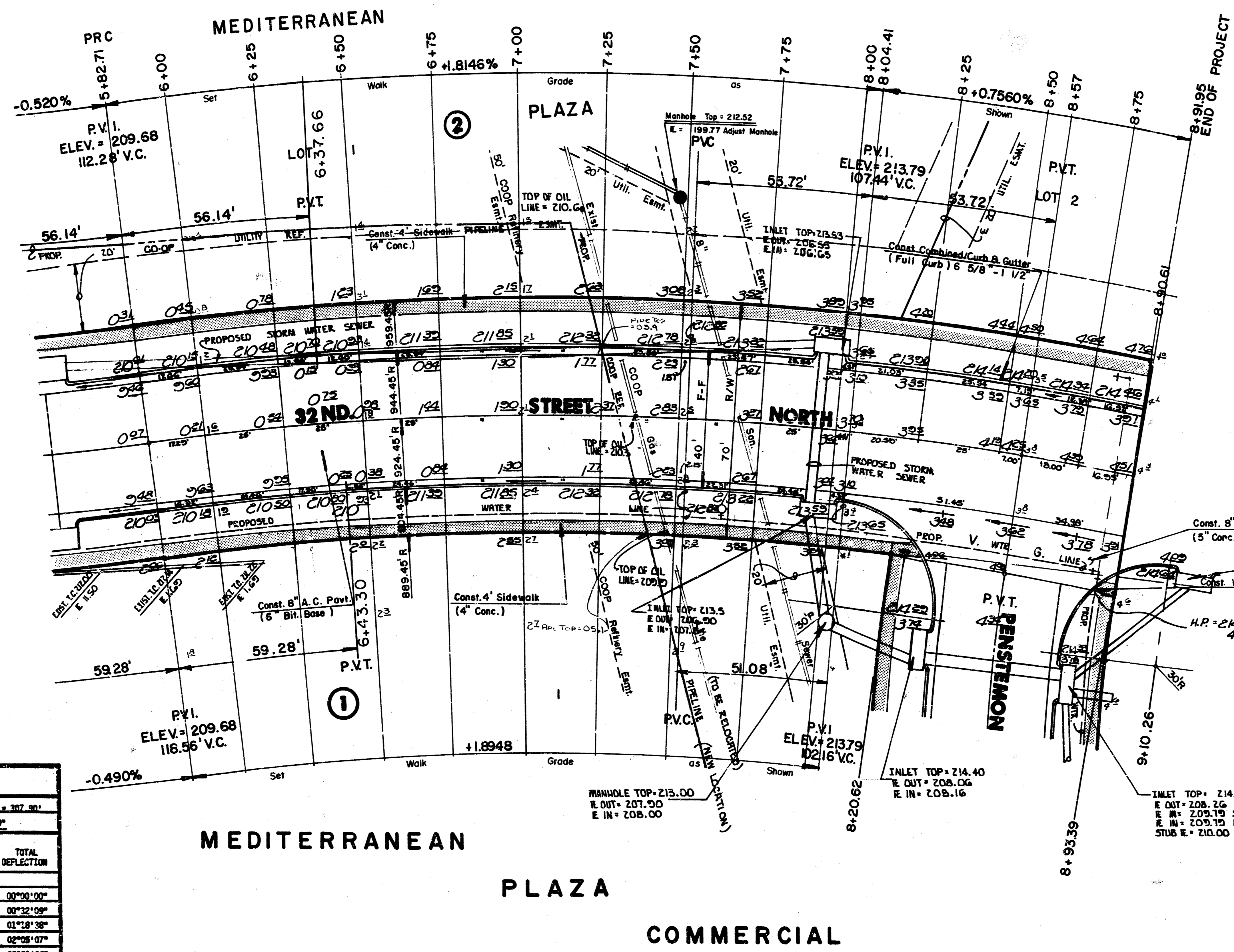
Note: The cost of all work indicated on this sheet shall be included in the unit price bid for wheel chair ramp which price shall include all costs of removing and reconstructing existing combined curb and gutter, compaction of subgrade and necessary area grading.

	<b>DETAILS</b> PROJECT NO. 472-76-245-81648-000-001	Design: F.F. Drawn by: F.F., E.C.G. Checked by: D.S.S.
		Date: 12-87 Job No.
MID-KANSAS ENGINEERING CONSULTANTS PA 3500 NORTH ROCK ROAD BUILDING #800 WICHITA, KANSAS 67226		Sheet 3/10 of 10





Scale : 1" = 20'

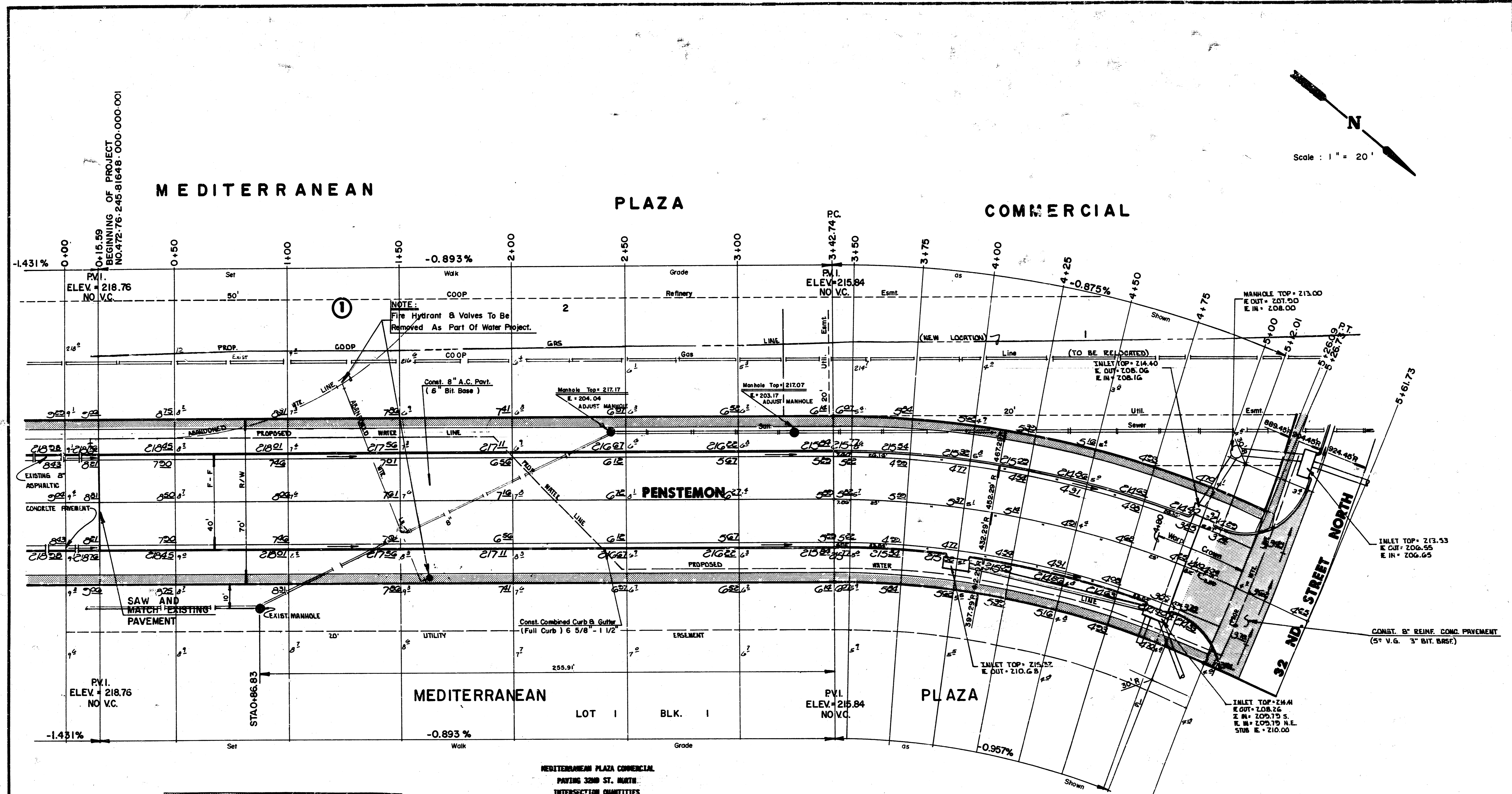
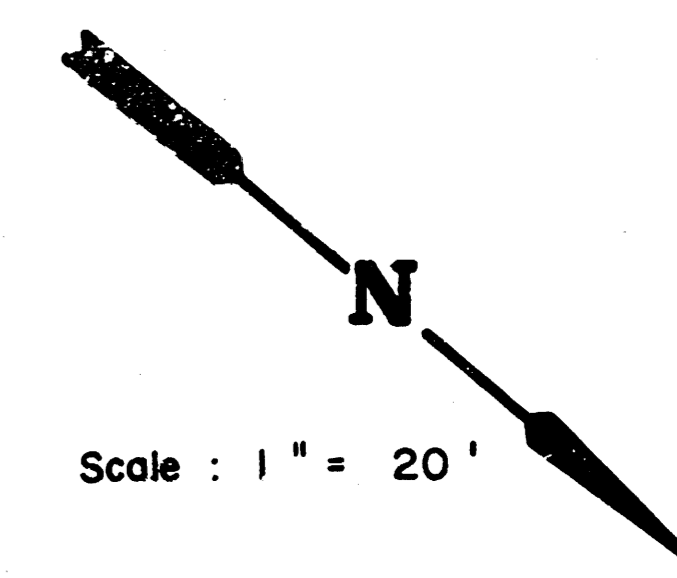


MEDITERRANEAN  
PLAZA  
COMMERCIAL

**CAUTION :**  
HIGH PRESSURE PETROLEUM PRODUCTS  
PIPELINE. CONTACT REX BROWN 24 HRS.  
PRIOR TO EXCAVATION AT 1-918-333-4111.

	CITY OF WICHITA	Drawn by F.F. ECG.
	<b>32 ND. STREET NORTH</b>	Checked by D.S.S.
	PROJECT NO. 472-76-245-81648-000-001	Date 12-1987
	MID-KANSAS ENGINEERING CONSULTANTS PA 3500 NORTH ROCK ROAD BUILDING #800 WICHITA, KANSAS 67226	Sheet 5 of 10

682-6561

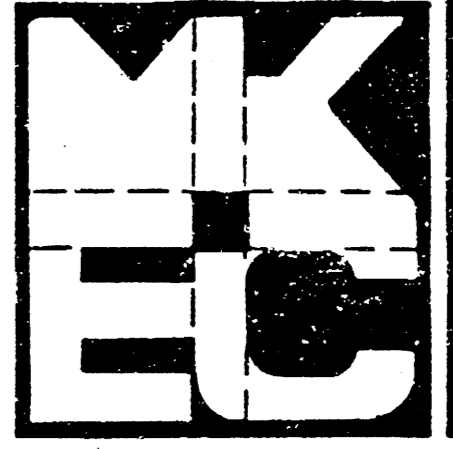


**MEDITERRANEAN PLAZA COMMERCIAL  
PAVING 32ND ST. NORTH  
INTERSECTION QUANTITIES**

STATION	ARC	CHORD LENGTH	CHORD BEING CUT	REFLECTION	TOTAL REFLECTION
3+42.74	-	-	-	-	0.00
3+40.00	7.28'	7.73'	6.79'	0.00	0.00
3+75.00	25.00'	25.00'	22.38'	0.00	0.00
4+00.00	25.00'	25.00'	22.38'	0.00	0.00
4+25.00	25.00'	25.00'	22.38'	0.00	0.00
4+50.00	25.00'	25.00'	22.38'	0.00	0.00
4+75.00	25.00'	25.00'	22.38'	0.00	0.00
5+00.00	25.00'	25.00'	22.38'	0.00	0.00
5+25.00	25.00'	25.00'	22.38'	0.00	0.00
5+50.00	25.00'	25.00'	22.38'	0.00	0.00
5+67.73	2.50'	12.76'	-	0.00	0.00
Total					0.00

- S.Y. Concrete Pavement
- 66.2 S.Y. 8" Asphaltic Conc. Pavement (6" Bituminous Base)
- 10.1 S.Y. 3" Bituminous Base
- 34.2 L.F. Combined Curb & Gutter
- 45.9 L.F. Monolithic Edge Curb (6 5/8")
- S.F. 4" Wheelchair Ramp
- S.F. 4" Walk
- C.Y. Excavation
- C.Y. Compacted Fill
- Lbs. Reinforcing Steel
- 226.0 S.Y. Manholes
- Tons Lime or Cement
- 127.8 S.Y. V.G. 5" Concrete & 3" Asphaltic Concrete Base

**CAUTION:**  
HIGH PRESSURE PETROLEUM PRODUCTS  
PIPELINE. CONTACT REX BROWN 24 HRS.  
PRIOR TO EXCAVATION AT 1-918-333-4111.

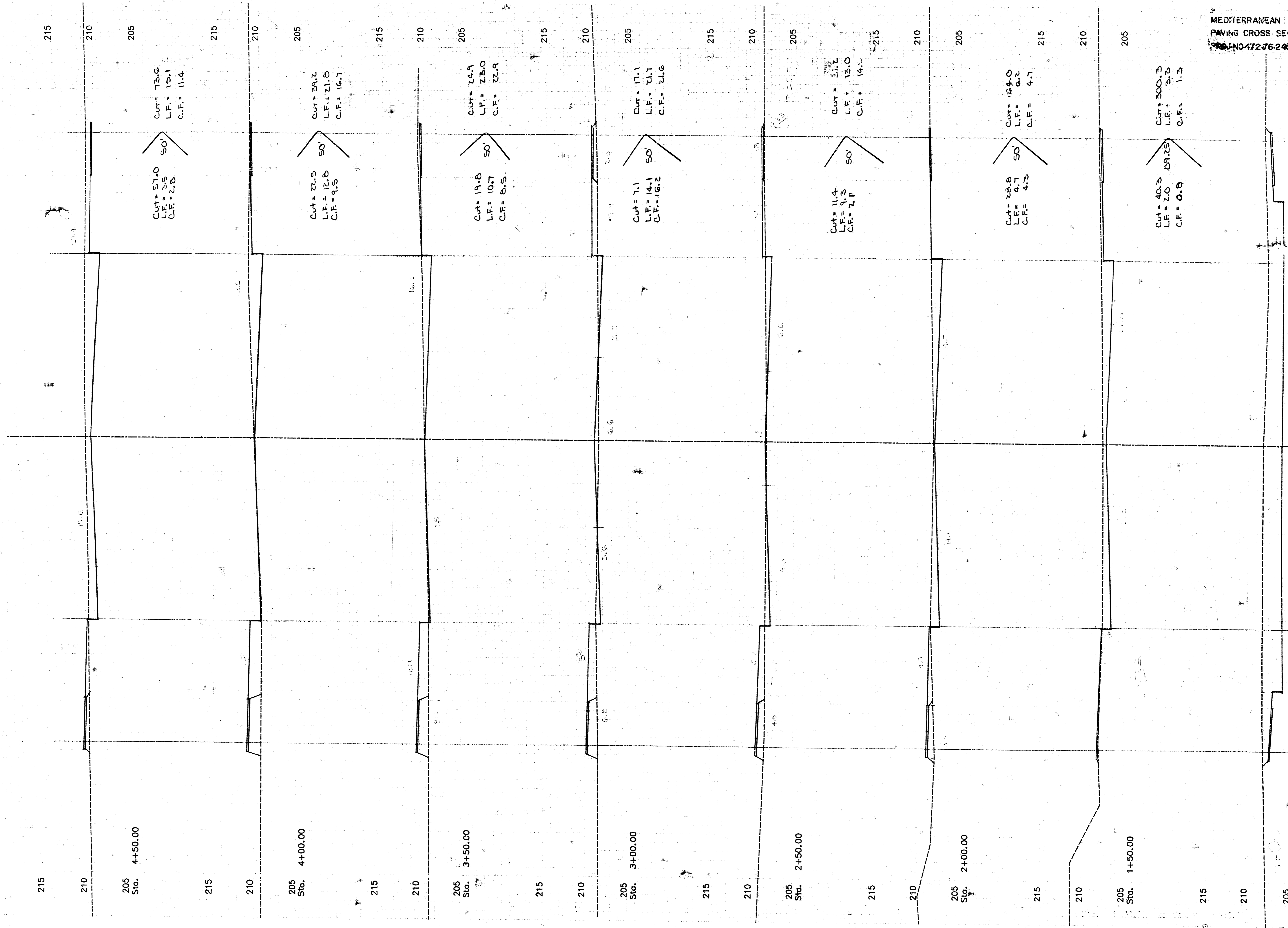


**CITY OF WICHITA**  
**PENSTEMON**  
PROJECT NO.  
472-76-245-81648-000-000-001

Design: F.F.  
Drawn by: F.F., E.C.G.  
Checked by: D.S.S.  
Date: 12-19-87  
Sheet No. 6 of 10

MID-KANSAS ENGINEERING CONSULTANTS PA  
3500 NORTH ROCK ROAD  
BUILDING #800  
WICHITA, KANSAS 67226

682-6561



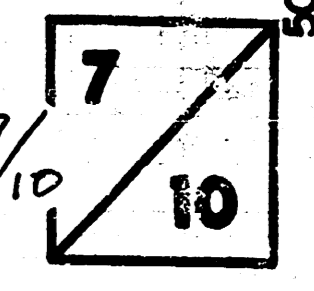
Total Sheets 7 of 8

Cut = 1702.7  
 L.F. = 153.2  
 C.F. = 135.5

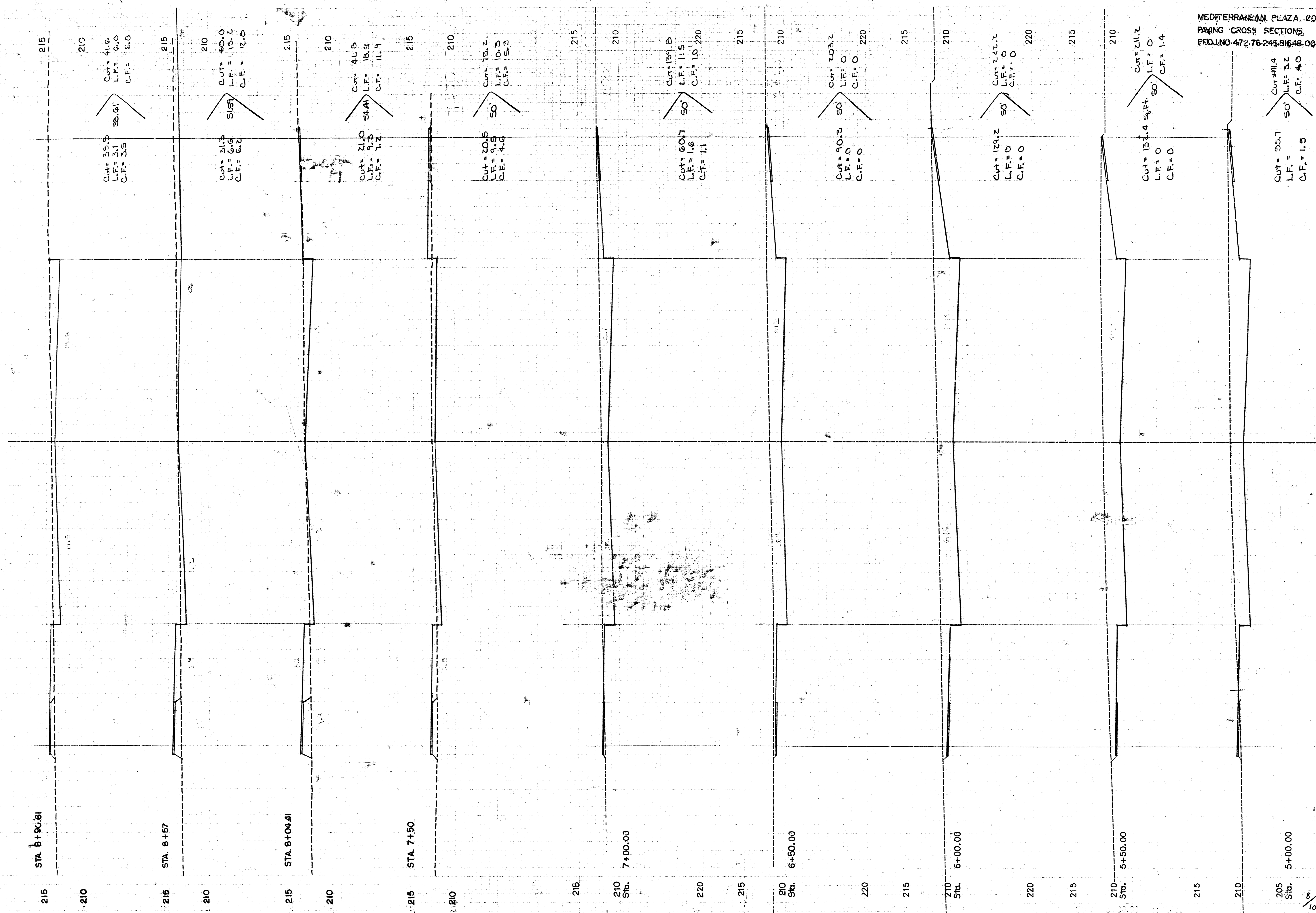
Cut = 141.4

32nd. STREET NORTH

FILMED FROM THE BEST AVAILABLE COPY



0 5 10 15 20 25 30 35 40

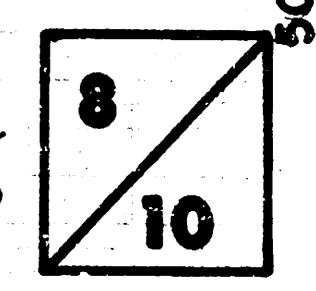


MEDITERRANEAN PLAZA, COMMERCIAL  
 PAVING CROSS SECTIONS  
 PROJ. NO. 472.76.245.81648.000000.001

50 45 40 35 30 25 20 15 10 5 0 5 10 15 20 25 30 35 40

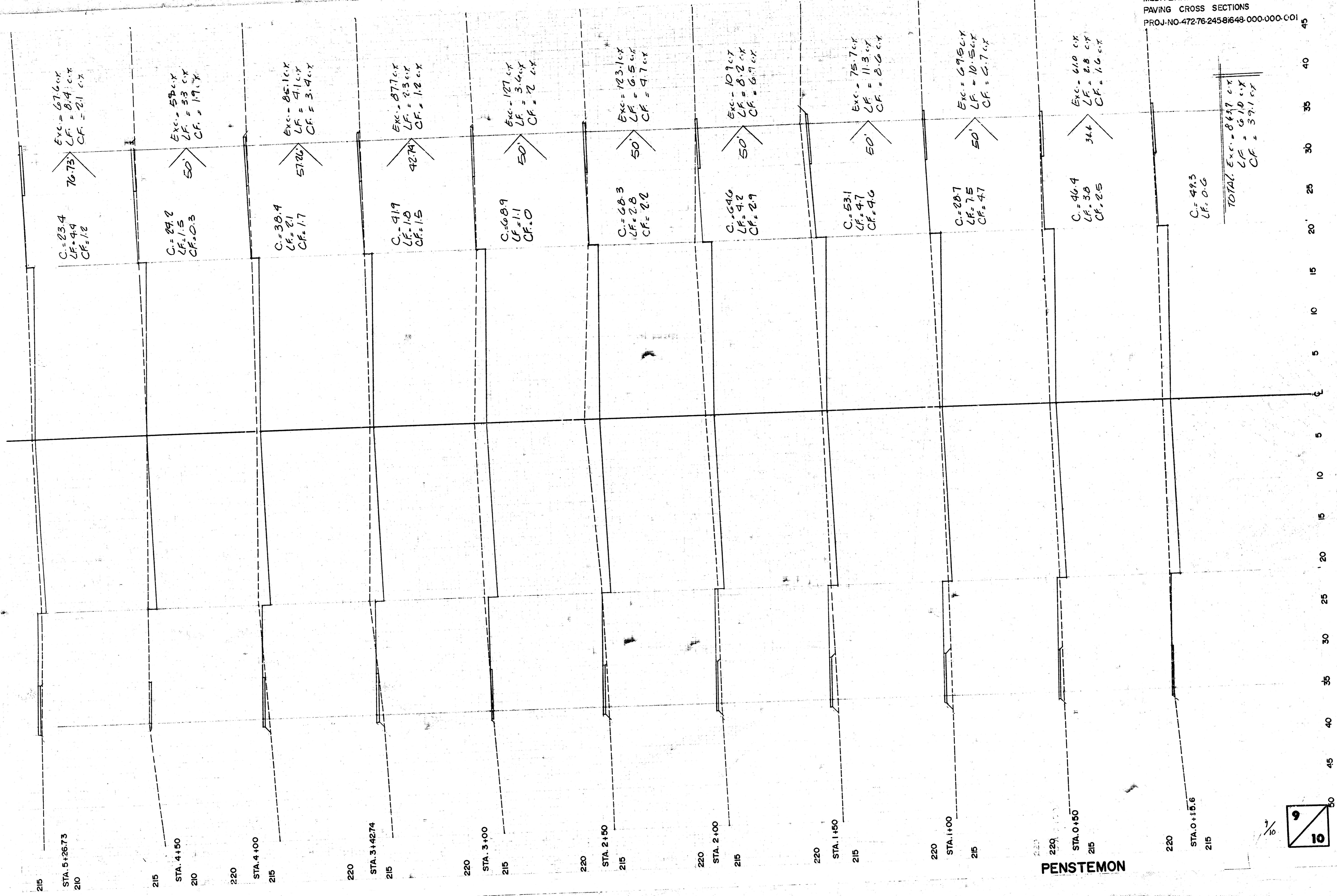
32nd. STREET NORTH

FILMED FROM THE BEST  
 AVAILABLE COPY...



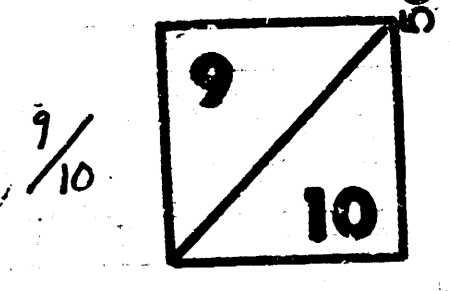
205 Sta. 5+00.00

8/10



PENSTEMON

FILMED FROM THE BEST  
AVAILABLE COPY.....



45  
40  
35  
30  
25  
20  
15  
10  
5  
0  
5  
10  
15  
20  
25  
30  
35  
40  
45

