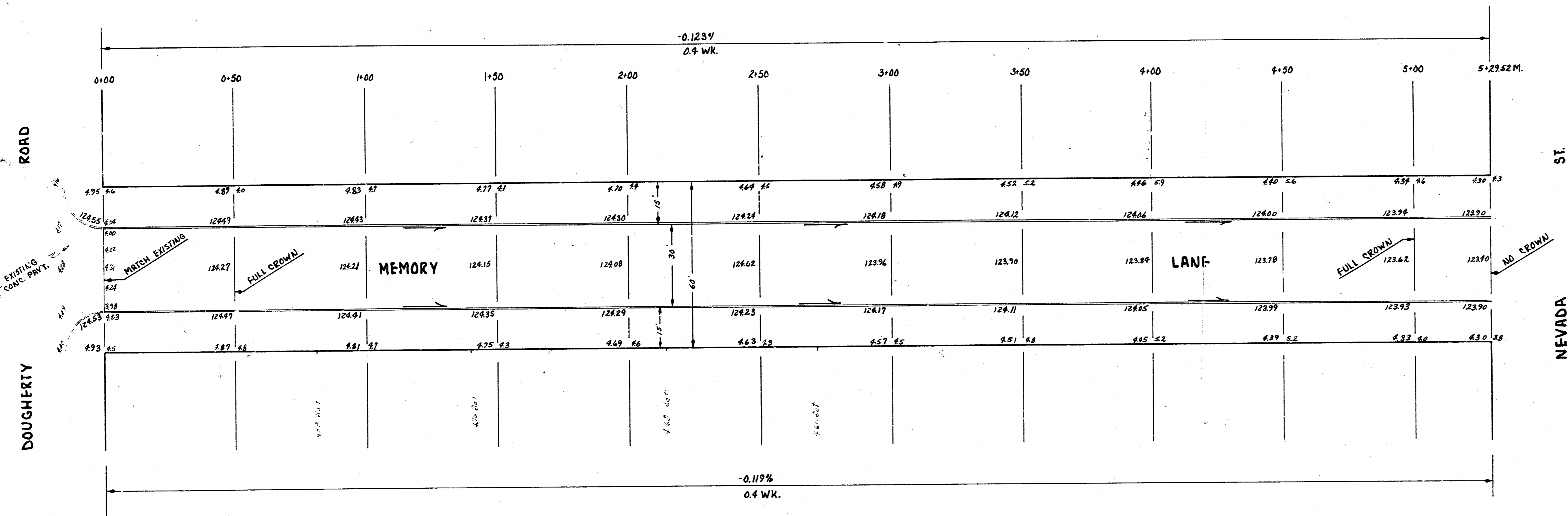
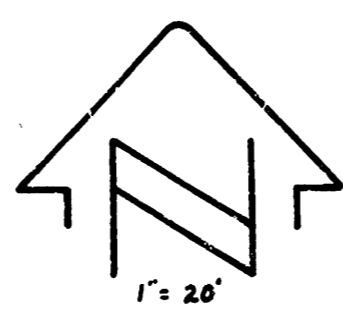


B.M. 124.56 "G" in Globe E. end return SE. cor. Dougherty & Memory Lane.  
 B.M. 125.24 R.R. spike, w. side, w. pile, "H" frame h.l.p., 150' w. 10' N. & 30' east of Dougherty.  
 B.M. 124.92 "M" in Müller fire hydr., s.e. cor. 11th & West.  
 B.M. 125.33 N.W. cor. conc. pa. 2nd. h. east of s.e. cor. Nevada & Memory Lane.  
 Chaining west to east on a line 75° 41' north of the south line of Memory Lane.



5000' (Scale 1/4" = 100')  
 E. L. Dougherty  
 City Engineer  
 City of Wichita, Kansas

**COMPACTED FILL TOTALS**

60.0 Cu. Yds. City Cut  
 93.0 Cu. Yds. Prop. Fill  
 102 9.3  
 102.6 Cu. Yds. Prop. Fill

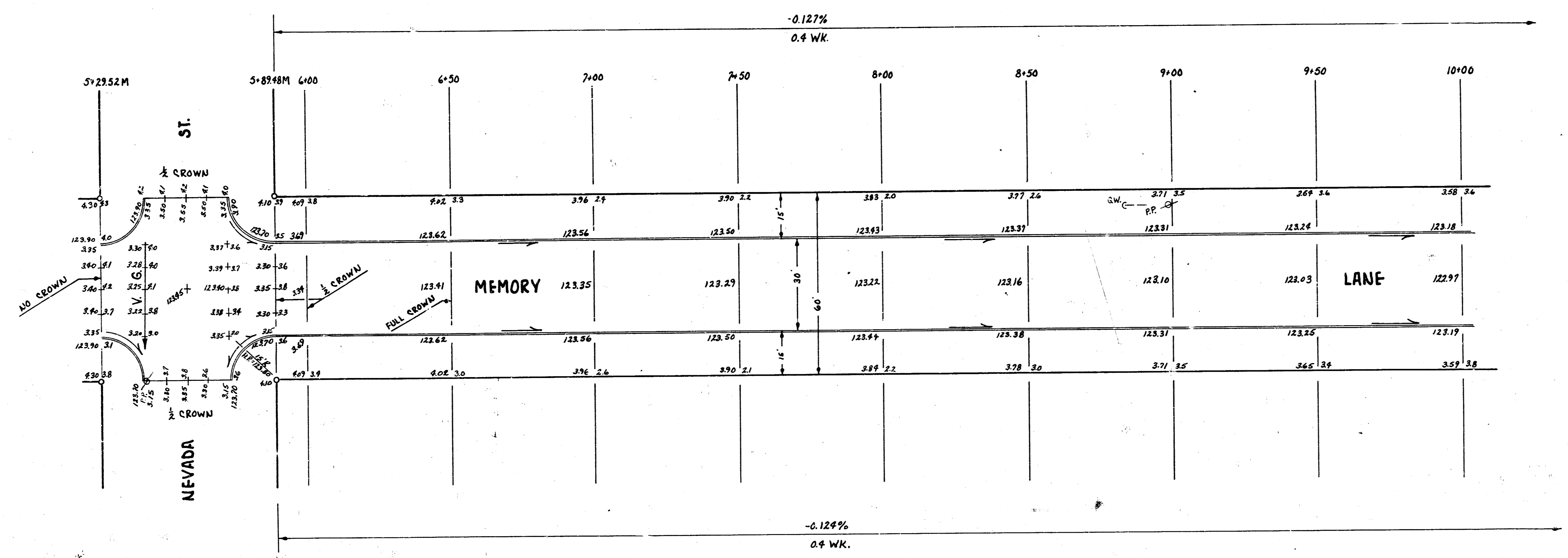
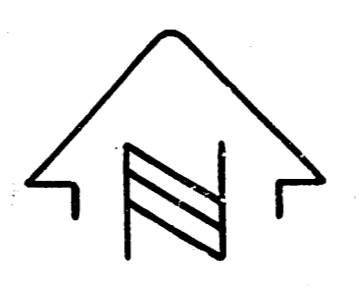
**EXCAVATION TOTALS**

107.0 Cu. Yds. City Cut  
 117.7 Cu. Yds. City Cut  
 1564.8 Cu. Yds. Prop. Cut  
 1721.3 Cu. Yds. Prop. Cut



1/5

**MEMORY LANE-**  
 E. L. DOUGHERTY & W. L. BIRKEL  
 30" CONC. & CB.  
**CITY OF WICHITA, KANSAS**  
 BE SMITH CITY ENGINEER  
 DATE: APRIL 1959 PROJ. NO. C18-182

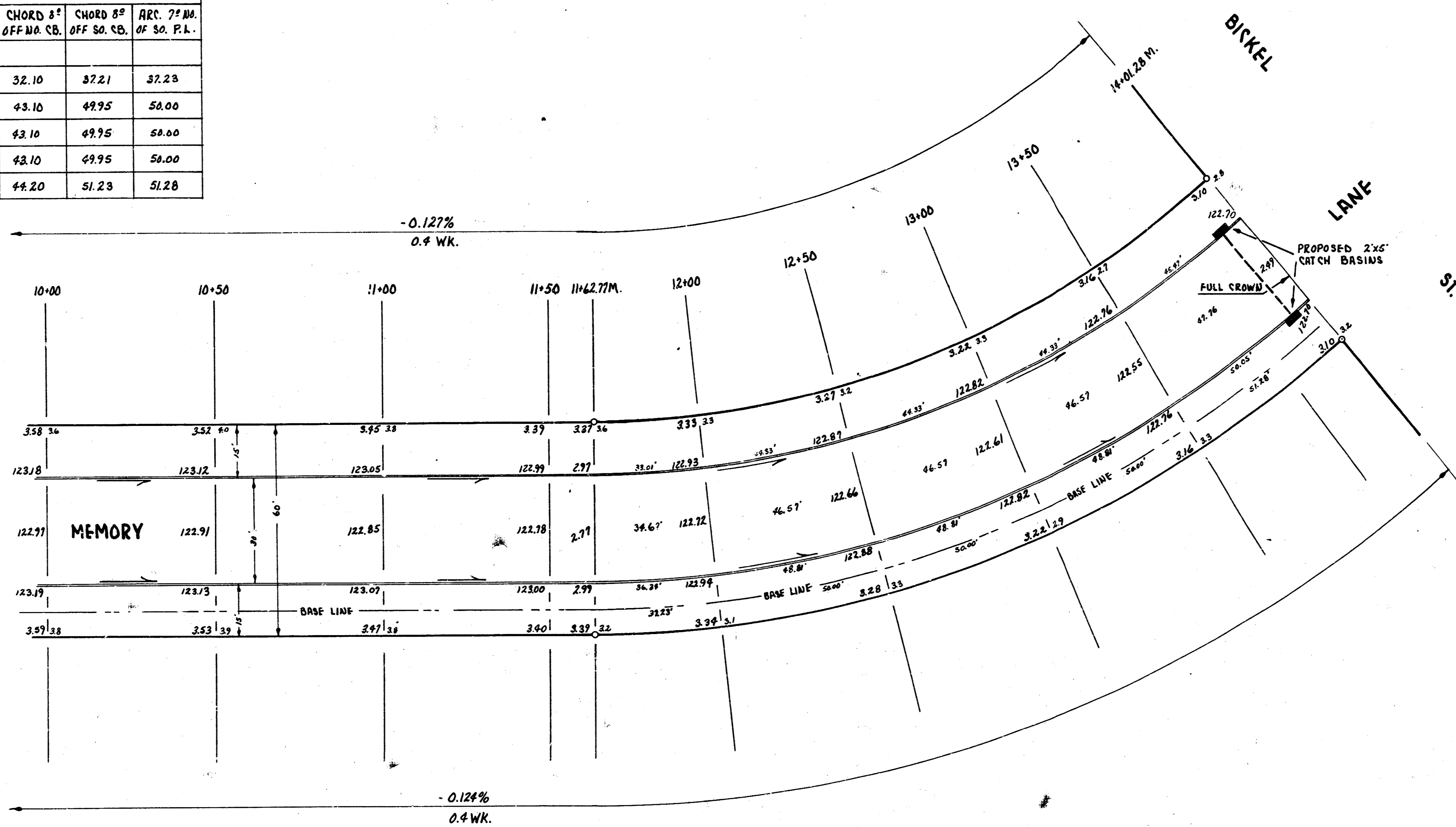


MEMORY LANE  
E.L. DOUGHERTY - W.L. BICKEL  
C18-182

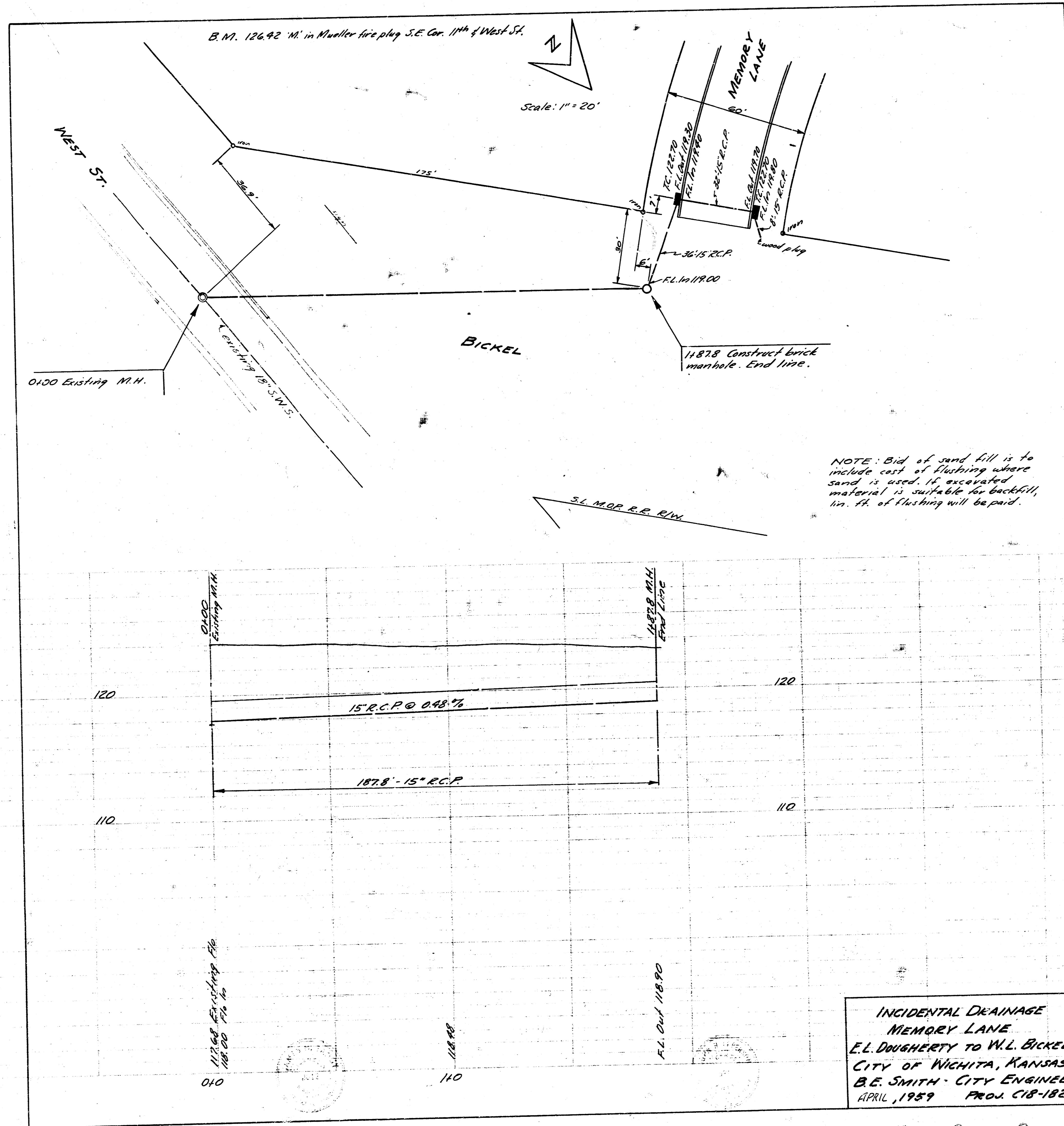
**CURVE DATA**  
 BASED ON A LINE 7' NO. OF SO. PROP. LINE

$\Delta = 40^\circ - 44' - 00''$   
 $\frac{1}{2}\Delta = 20^\circ - 22' - 00''$   
 $ARC = 238.51'$   
 $R = 335.21'$   
 $DEFL./PT. = 5.127738$  MIN.

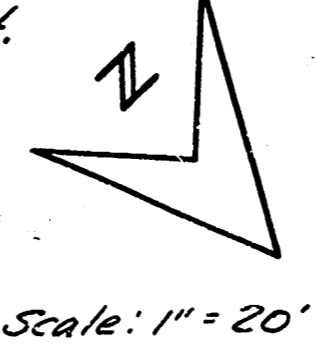
STATION	DEFL. $\angle$	TOTAL DEFL. $\angle$	CHORD $\Delta$ OFF MO. CB.	CHORD $\Delta$ OFF SO. CB.	ARC. 7' IN. OF SO. P.L.
11+62.77 P.C.					
12+00	3° 10' 59"	3° 10' 59"	32.10	37.21	37.28
12+50	4° 16' 23"	7° 27' 17"	43.10	49.95	50.00
13+00	4° 16' 23"	11° 43' 40"	43.10	49.95	50.00
13+50	4° 16' 23"	16° 00' 08"	43.10	49.95	50.00
14+01.28 P.T.	4° 22' 57"	20° 22' 06"	66.20	51.23	51.28



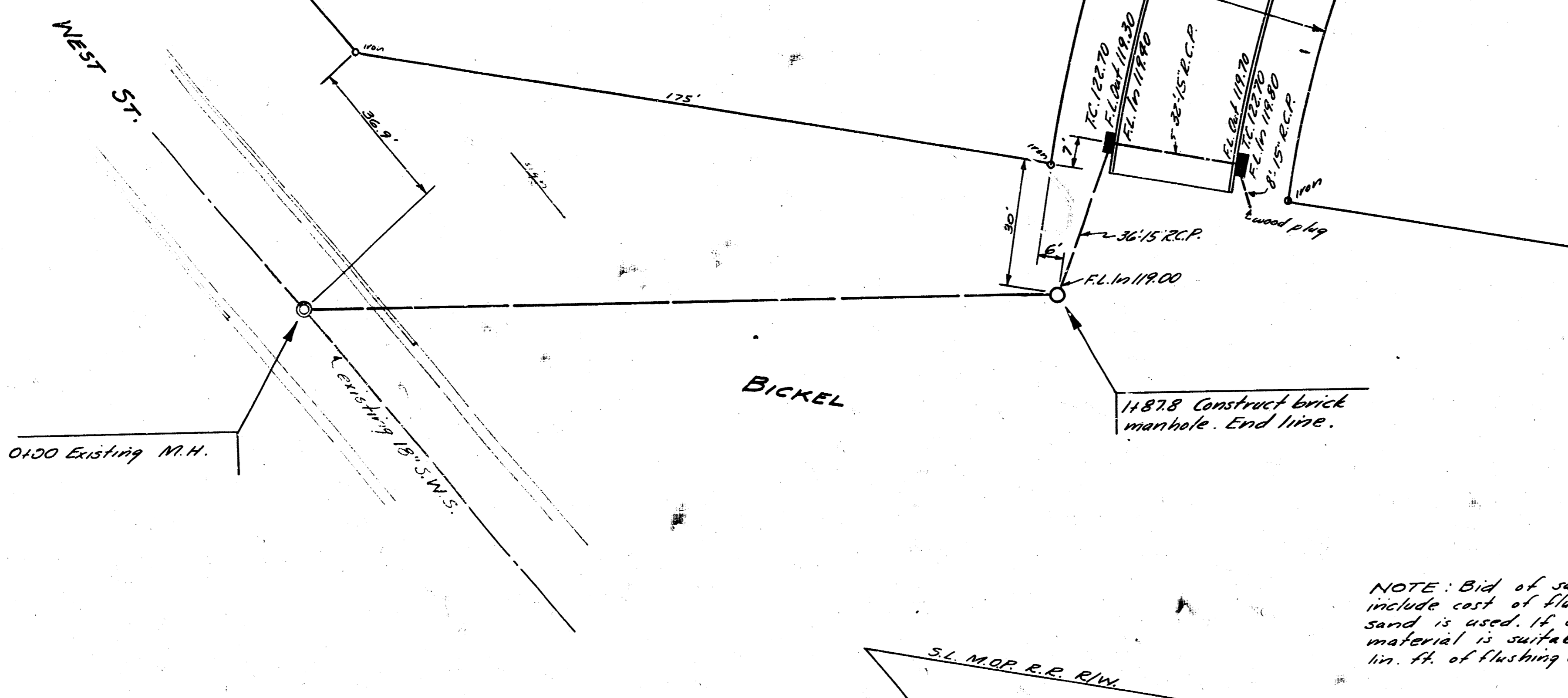
MEMORY LANE  
 E.L. DOUGHERTY ~ W.L. BICKEL  
 C18 - 182



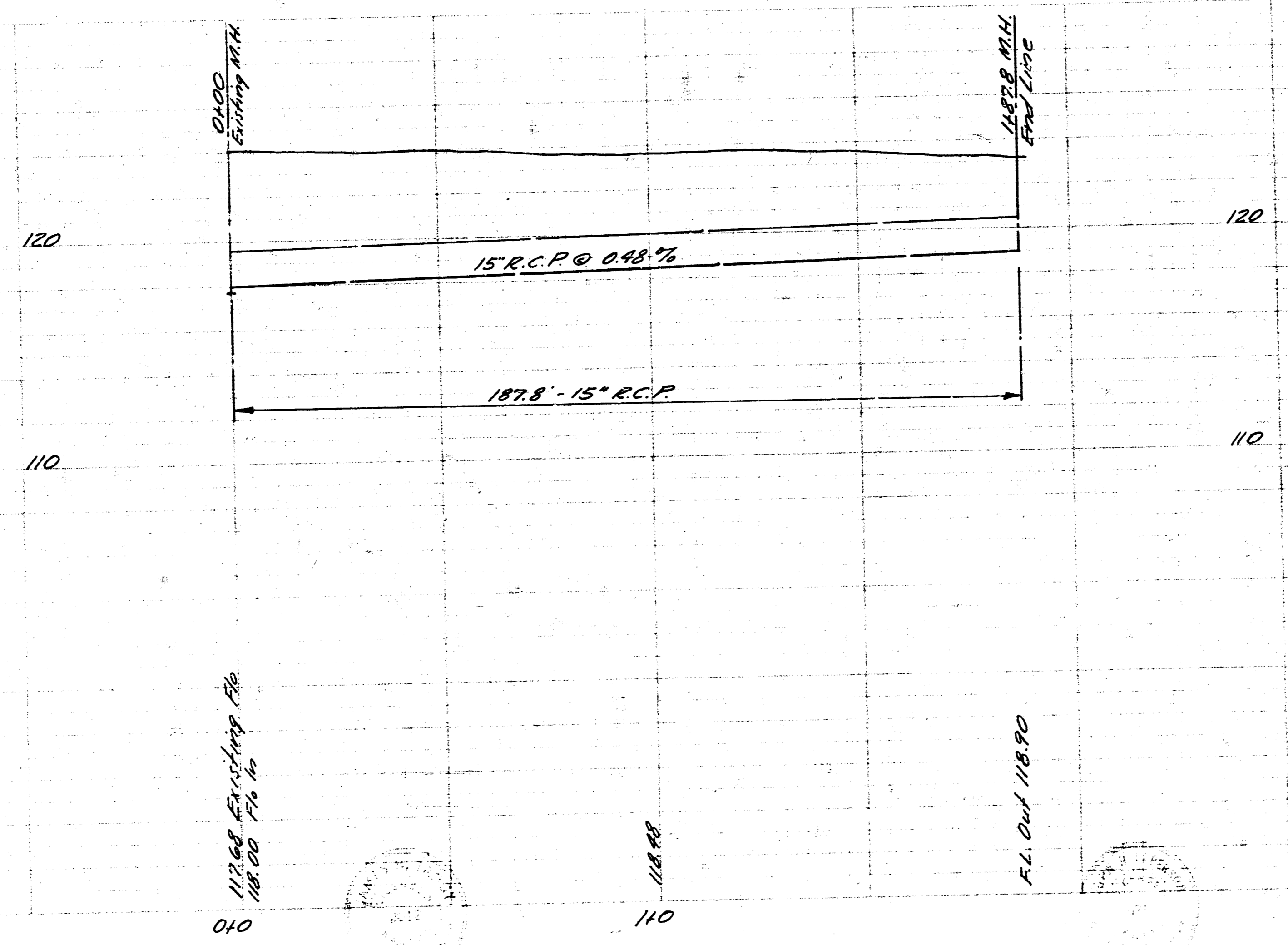
B.M. 126.92 'M' in Mueller fire plug S.E. Cor. 11th & West St.



Scale: 1" = 20'



NOTE: Bid of sand fill is to include cost of flushing where sand is used, if excavated material is suitable for backfill, in. ft. of flushing will be paid.



INCIDENTAL DRAINAGE  
 MEMORY LANE  
 E.L. DOUGHERTY TO W.L. BICKEL  
 CITY OF WICHITA, KANSAS  
 B.E. SMITH - CITY ENGINEER  
 APRIL, 1959 PROJ. C18-182