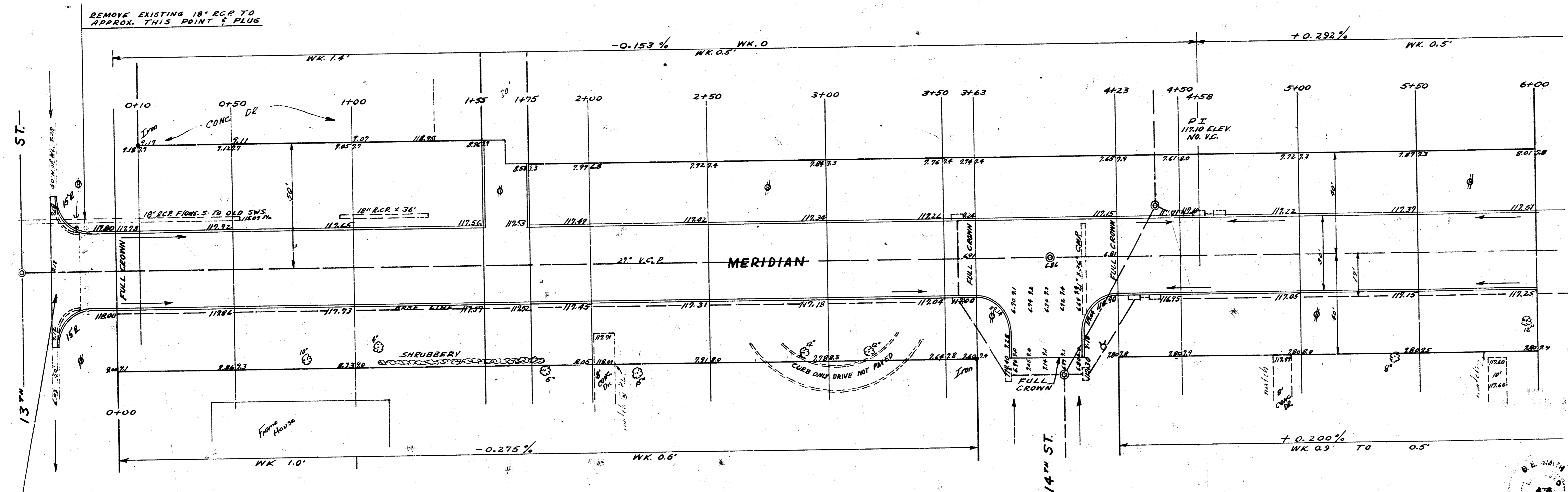


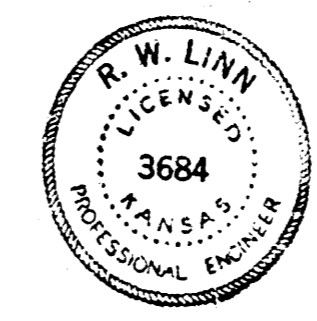
BM 118.39 STANDARD SE CORNER MERIDIAN & 13TH
 BM 121.08 SE CORNER CONC STEP HOUSE NW CORNER MERIDIAN & 15TH
 BM 119.29 "B" IN RITCHIE SOUTH CB 15TH & W END RADIUS W.S. MERIDIAN.
 STATIONING & BASE LINE 17' EAST OF S MERIDIAN



REMOVE & REPLACE WING AS SHOWN MATCH EXISTING ELEVATIONS OF OLD PWT.

Excavation

Prop Cut	Ch. Cut	Prop Fill	Ch. Fill
1181.9	699	92.2	11.9
+10% 1182	+4% 76	+4% 92	+4% 12
1310.1 C.F.	76.9 C.F.	102.5 C.F.	12.9 C.F.



MERIDIAN AVE.
 N.L. 13TH ST. TO S.L. 15TH ST.
 30' CONC. & CB.
 CITY OF WICHITA KAN.
 B.E. SMITH CITY ENGINEER
 JULY 1958 PROJ. NO. C17-59

1/4

