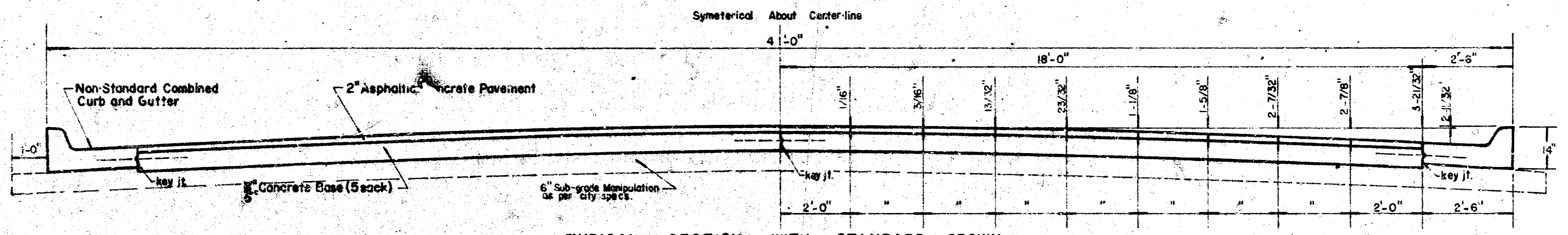
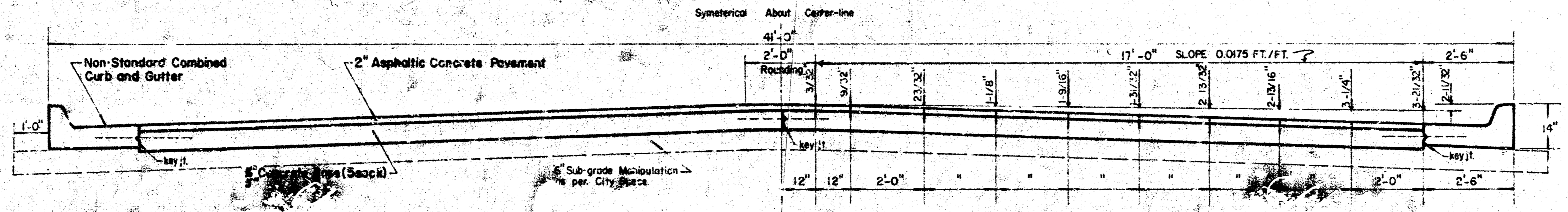


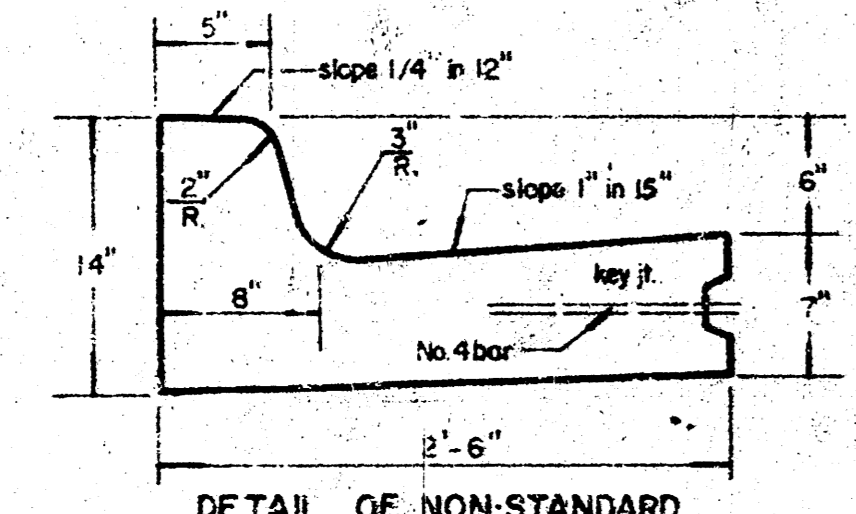
MERIDIAN AVE
 S. L. RIVER PARK DR - S. L. 21st ST.
 PROJ. NO. DAK5573063
 CITY OF WICHITA, KANSAS
 R. W. LINN - City Engineer



TYPICAL SECTION WITH STANDARD CROWN
 40'-0" ASPHALTIC CONCRETE PAVEMENT

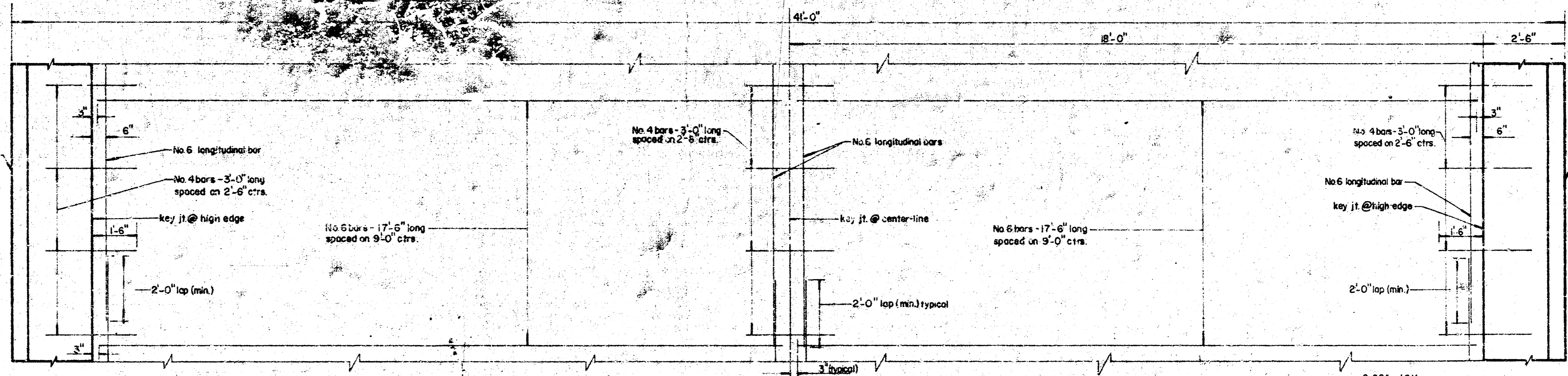


TYPICAL SECTION WITH ALTERNATE CROWN
 40'-0" ASPHALTIC CONCRETE PAVEMENT

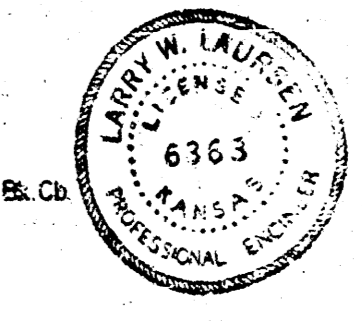


DETAIL OF NON-STANDARD
 COMBINED CURB AND GUTTER

GENERAL NOTES:
 Contraction joints may be constructed in combined curb and gutter by sawing with an approved concrete saw. The cut shall extend 2-1/2" below the surface of the gutter and curb. Sawed contraction joints shall have a maximum spacing of 10 ft. and be filled with a specified joint filler, such that the joint in the gutter section will be completely filled.
 Pavement Grains shown on plans are for standard crown.



TYPICAL STEEL PATTERN
 40'-0" ASPHALTIC CONCRETE PAVEMENT



BM = 12634 - CITY STD. 158' W. OF W. L. BENJAMIN & 6' S. OF N. L. 21ST

Curve Data - West Curb
 R = 40.00'
 Δ = 75° 31' 20.956"
 L = 52.33'
 T = 30.98'
 C = 48.99'
 D = 143° 16' 22.018"

Grade to match & drain at end of pmt. in River Park Drive. Grading to be considered incidental to project.

Scale: 1" = 20'

Note to Field Engineer and Contractor: The maximum number of drives that may be constructed on and charged to this project is 4.24' Drives.

Staking Data Based on N Curb Curve - R=40' Δ=75° 31' 20.956"

Point	Length on Curve	Chord B Off	Defl. Δ	Total Defl. Δ
0+87.52	0.00	0.00	0° 00' 00"	0° 00' 00"
12.71	26.58	20.71	18° 52' 52"	18° 52' 52"
12.71	26.58	20.71	18° 52' 52"	37° 45' 44"

Note: Install 2" Conc. Heel at end of Pmt. (Incidental to Project)

Note: Contractor to verify driveway locations with Property Owner prior to construct.

Curve Data - East Curb
 R = 75.00'
 Δ = 85° 10' 38.8065"
 L = 112.81'
 T = 70.16'
 C = 102.47'
 D = 76° 23' 39.7416"

Staking Data Based on E Curb Curve - R=75' Δ=85° 10' 38.8065"

Point	Length on Curve	Chord B Off	Defl. Δ	Total Defl. Δ
0+92.32	0.00	0.00	0° 00' 00"	0° 00' 00"
12.18	18.97	14.34	6° 39' 46"	6° 39' 46"
22.84	26.94	20.44	13° 19' 50"	13° 19' 50"
33.50	34.91	26.14	19° 59' 44"	19° 59' 44"
44.16	42.88	31.44	26° 39' 38"	26° 39' 38"
54.82	50.85	36.74	33° 19' 32"	33° 19' 32"
65.48	58.82	42.04	39° 59' 26"	39° 59' 26"
76.14	66.79	47.34	46° 39' 20"	46° 39' 20"

② is Section Line (to Meridian N-S)

- SUBGRADE -
 Type of subgrade treatment to be determined by the Field Engineer. Subgrade treatment may consist of lime treatment, cement treatment, subgrade modifiers or any combination of these.

- SIDEWALK -
 Contractor to grade parking & clear Rof.W. for sidewalk. Compact fill in sidewalk area. Sidewalk by "Others".

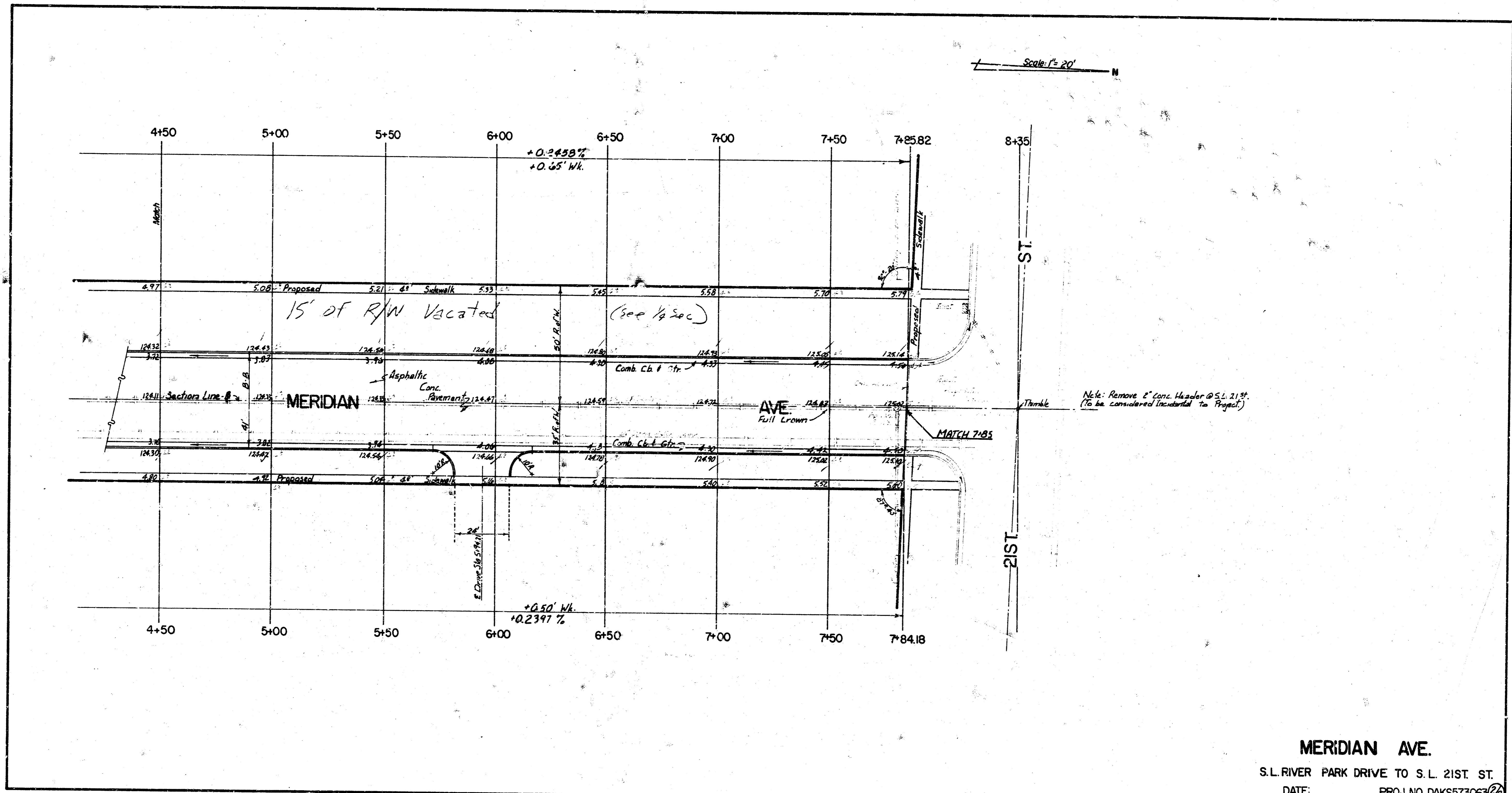
- EARTHWORK -

CITY	Exc.	Comp. Fill	Exc.	Comp. Fill
	46.9 C.Y.	4.1 C.Y.	1530.5 C.Y.	39.8 C.Y.
+10%	4.7 C.Y.	0.4 C.Y.	153.7 C.Y.	4.0 C.Y.
Total	51.6 C.Y.	4.5 C.Y.	1684.2 C.Y.	43.8 C.Y.

MERIDIAN AVE.
 S.L. RIVER PARK DRIVE TO S.L. 21ST. ST.
 ASPHALTIC CONCRETE PAVEMENT
 4" B-B WITH COMB. CB. & GTR.
 5" CONC. BASE WITH 2" ASPH. SURFACE
 CITY OF WICHITA, KANSAS
 R.W. LINN - CITY ENGINEER
 DATE: _____ PROJ. NO. DAKS573063

Survey: W. L. Linn
 Engineer: R. W. Linn
 City Engineer





MERIDIAN AVE.
 S.L. RIVER PARK DRIVE TO S.L. 21ST. ST.
 DATE: _____ PROJ. NO. DAKS573063