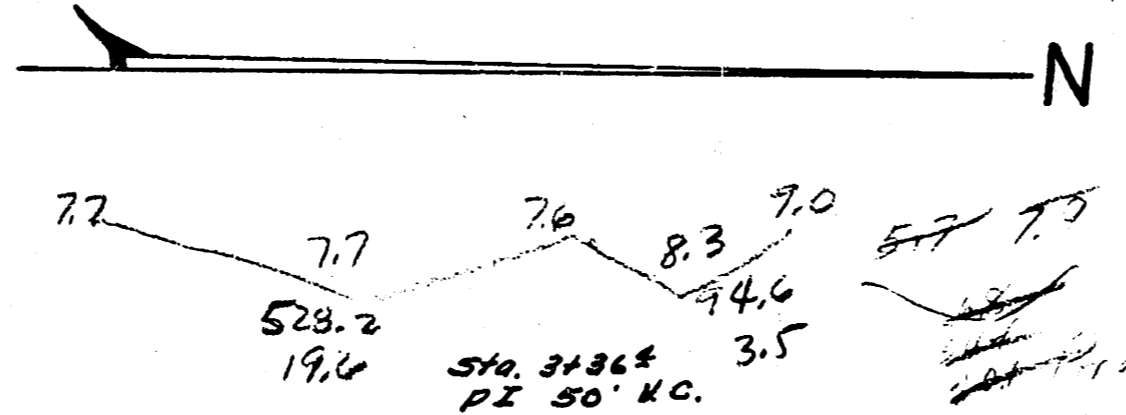
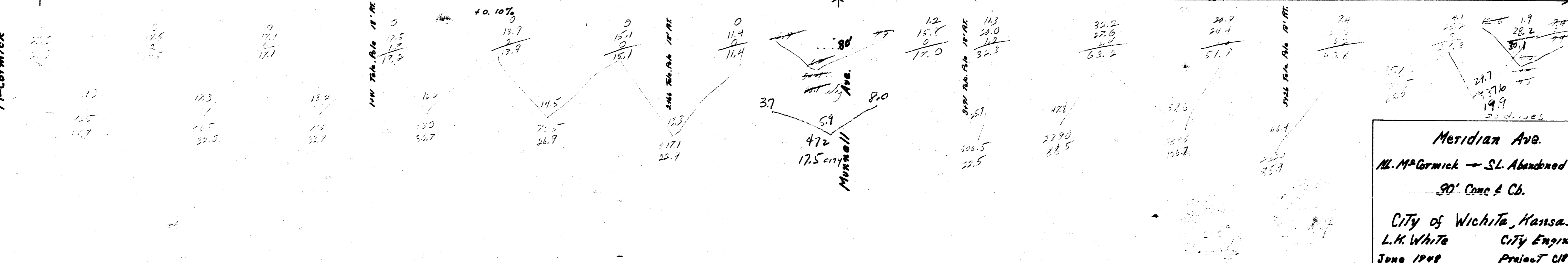
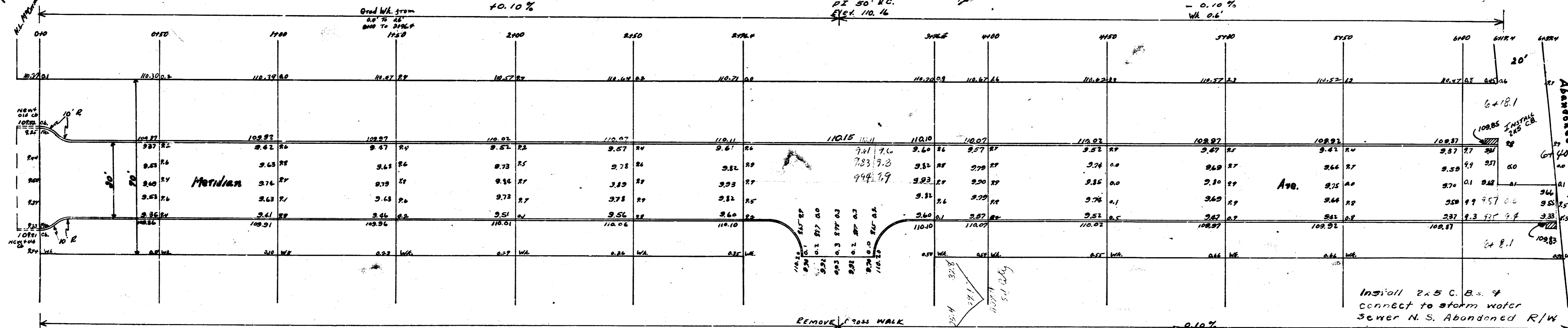


B.M. 108.74 Standard S.E. Cor. Meridian & McCormick
 B.M. 111.09 7' on S. Rim M.H. 150' E. Meridian N.S. W. & W. 9' W
 NOTE: Stationing on E. Meridian

Property



McCormick



Meridian Ave.
 N. McCormick - S. Abandoned 9' W
 30' Conc & Cb.
 City of Wichita, Kansas
 L.H. White City Engineer
 June 1948 Project 218-15

133 55