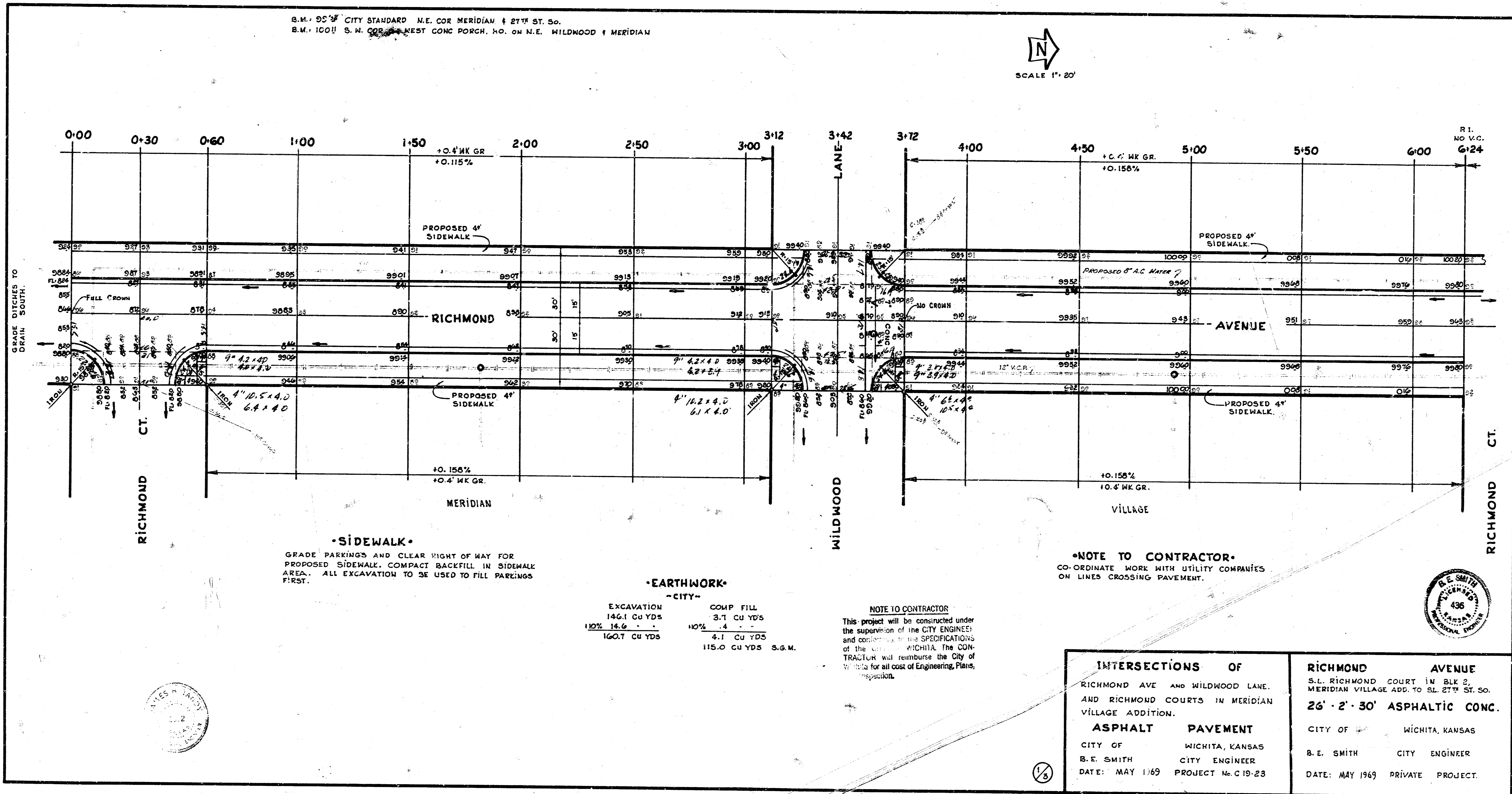
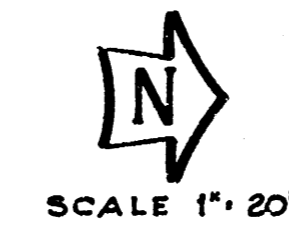


S.M. 95' CITY STANDARD N.E. COR MERIDIAN & 27TH ST. SO.
 S.M. 100' S.W. COR. NEST CONC PORCH. HO. ON N.E. WILDWOOD & MERIDIAN



SIDEWALK
 GRADE PARKINGS AND CLEAR RIGHT OF WAY FOR PROPOSED SIDEWALK. COMPACT BACKFILL IN SIDEWALK AREA. ALL EXCAVATION TO BE USED TO FILL PARKINGS FIRST.

EARTHWORK - CITY

EXCAVATION	COMP FILL
146.1 CU YDS	3.1 CU YDS
130% 14.6	4.1
160.7 CU YDS	4.1 CU YDS
	115.0 CU YDS S.G.M.

NOTE TO CONTRACTOR
 This project will be constructed under the supervision of the CITY ENGINEER and conform to the SPECIFICATIONS of the CITY OF WICHITA. The CONTRACTOR will reimburse the City of Wichita for all cost of Engineering, Plans, etc.

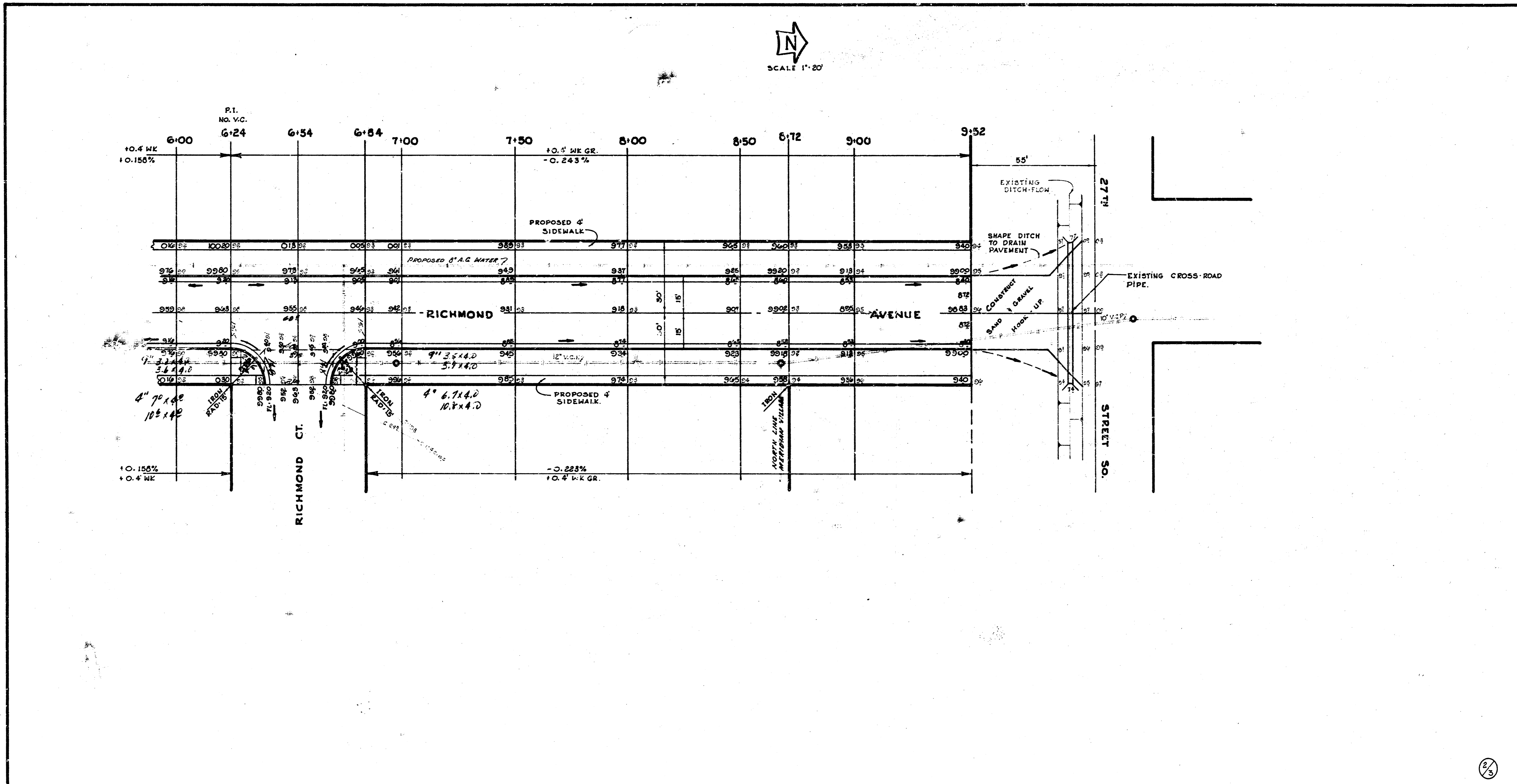
NOTE TO CONTRACTOR
 CO-ORDINATE WORK WITH UTILITY COMPANIES ON LINES CROSSING PAVEMENT.

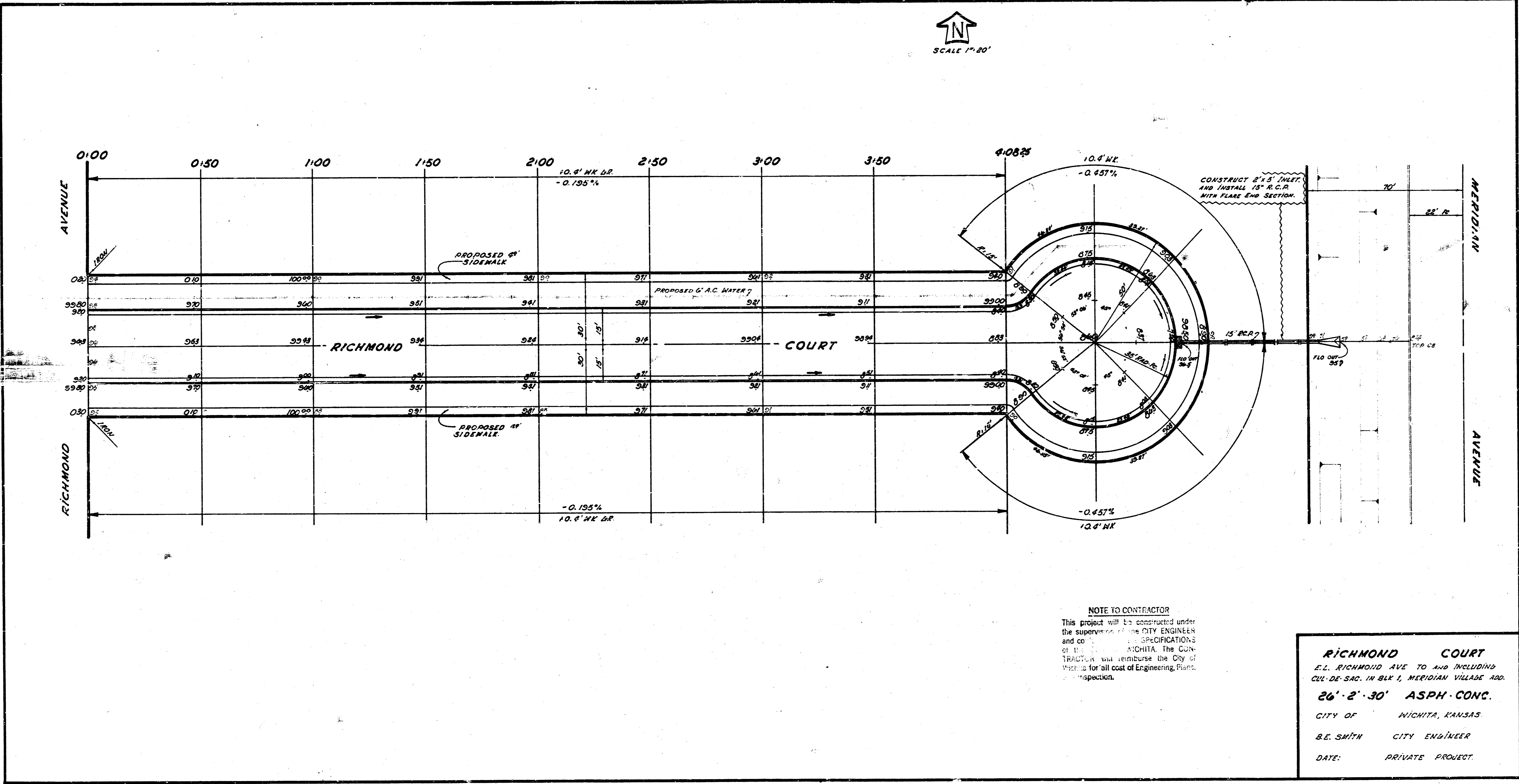


INTERSECTIONS OF RICHMOND AVE AND WILDWOOD LANE, AND RICHMOND COURTS IN MERIDIAN VILLAGE ADDITION. ASPHALT PAVEMENT CITY OF WICHITA, KANSAS B. E. SMITH CITY ENGINEER DATE: MAY 1969 PROJECT No. C19-23	RICHMOND AVENUE S.L. RICHMOND COURT IN BLK 2, MERIDIAN VILLAGE ADD. TO SL. 27TH ST. SO. 26' - 2' - 30' ASPHALTIC CONC. CITY OF WICHITA, KANSAS B. E. SMITH CITY ENGINEER DATE: MAY 1969 PRIVATE PROJECT.
--	--



City of Kansas
Bluffs
Engineering
Bluffs, Kansas
Chiang, J. J.

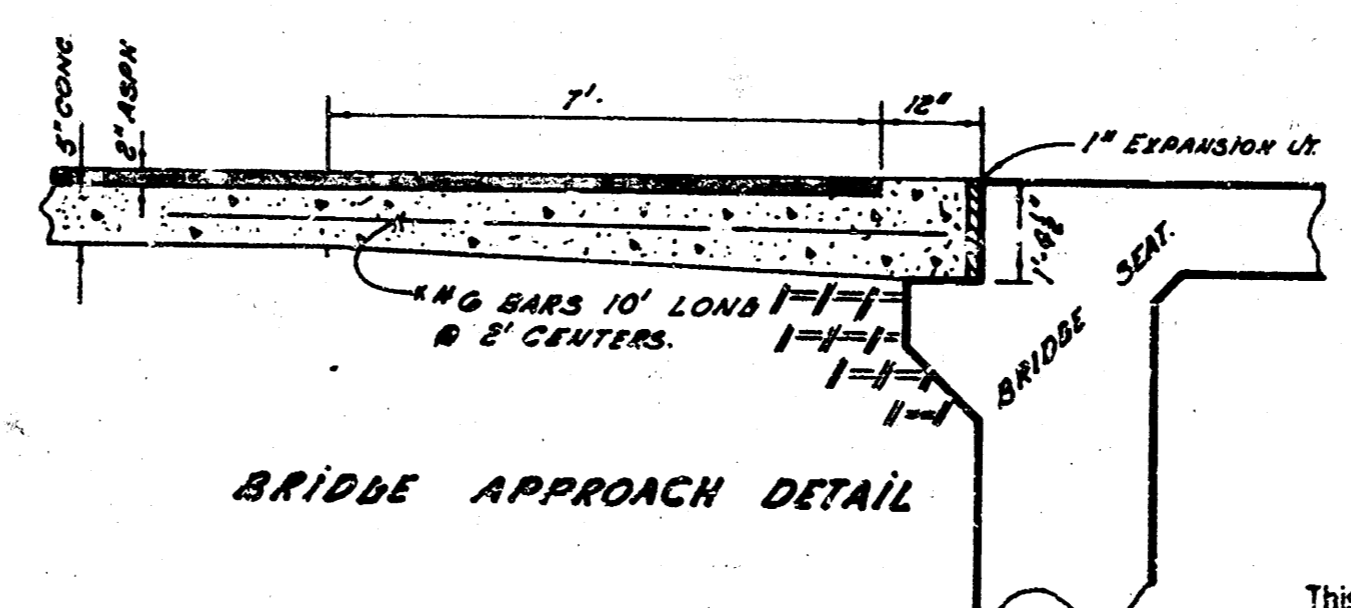
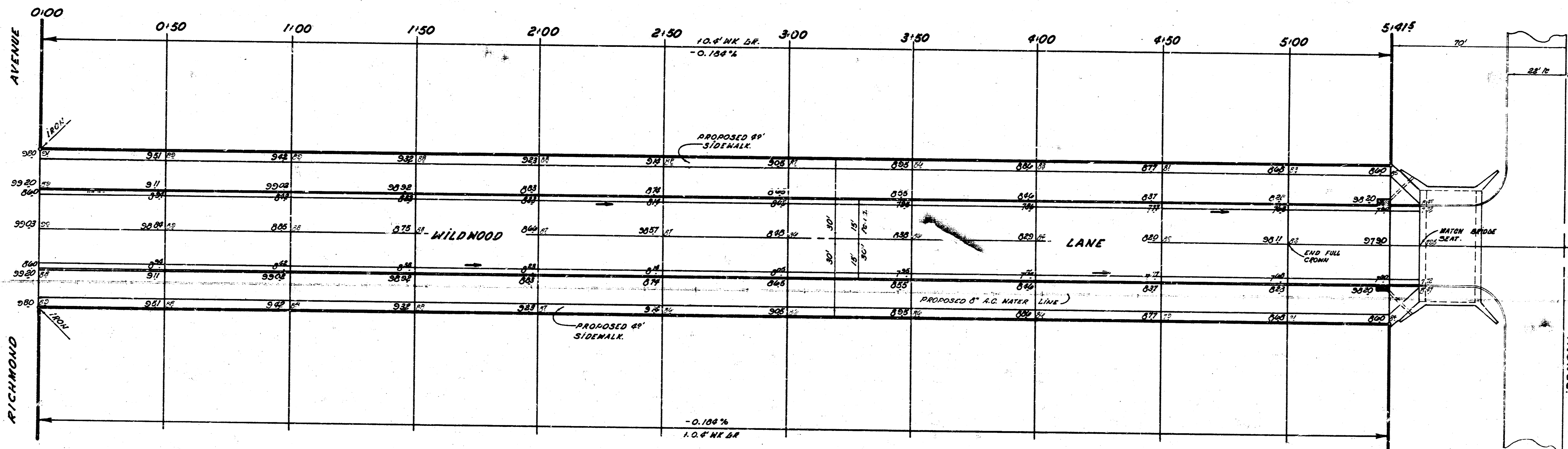




NOTE TO CONTRACTOR
 This project will be constructed under the supervision of the CITY ENGINEER and conform to the SPECIFICATIONS of the CITY OF NICHITA. The CONTRACTOR will reimburse the City of Nichita for all cost of Engineering, Plans, and Inspection.

RICHMOND COURT
 E.L. RICHMOND AVE TO AND INCLUDING CUL-DE-SAC IN BLK 1, MERIDIAN VILLAGE ADD.
26'-2'-30" ASPH-CONC.
 CITY OF NICHITA, KANSAS.
 B.E. SMITH CITY ENGINEER
 DATE: PRIVATE PROJECT.

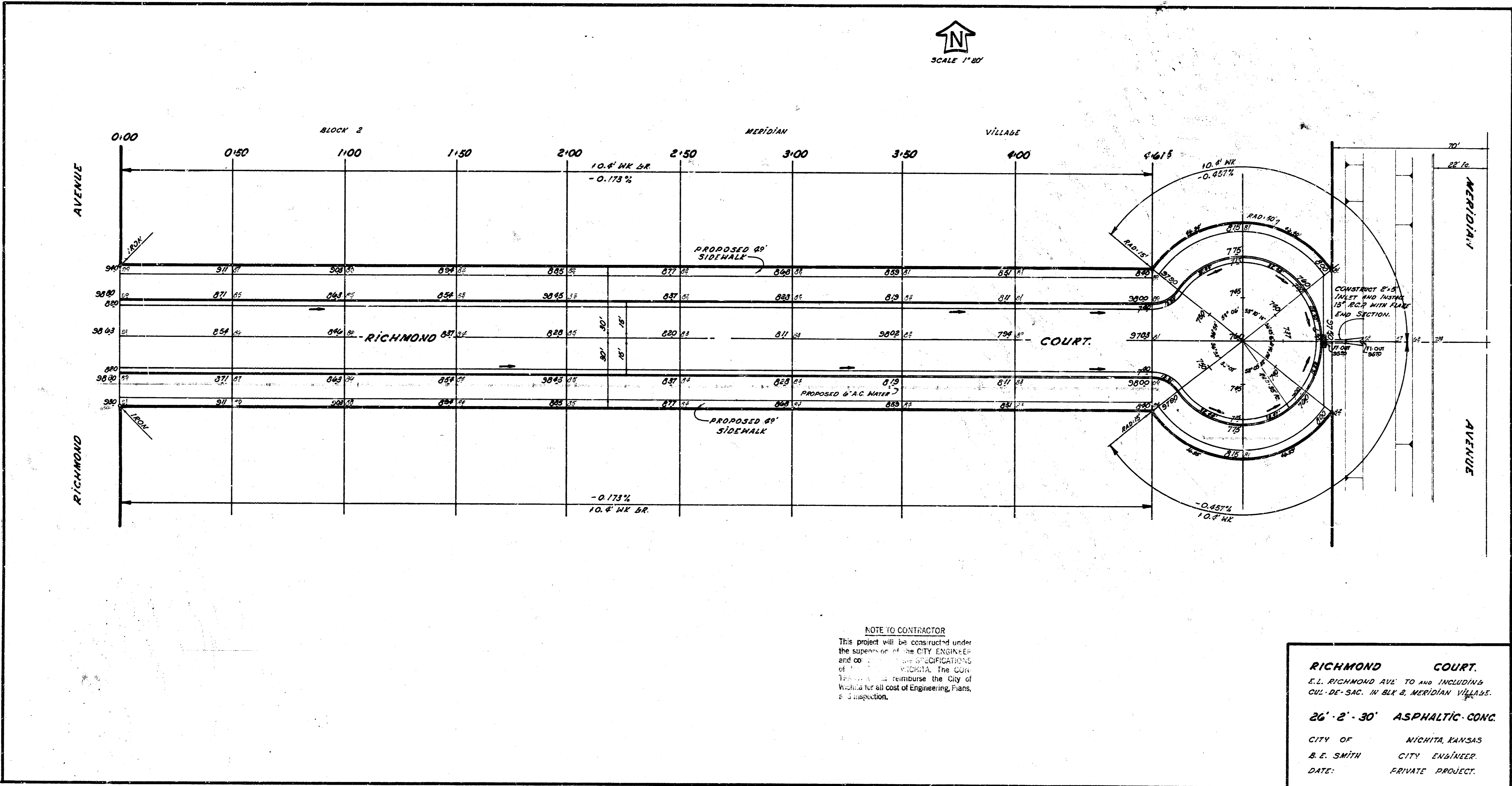
S.M. 100' S.W. COR. OF WEST CONC. PORCH NO. DU. N.E.
 WILDWOOD AND MERIDIAN.
 S.M. 35' 6" CITY STANDARD N.E. COR. MERIDIAN / 27th ST. 50.



NOTE PAVING CONTRACTOR TO MATCH APPROACH
 SEAT AND BRIDGE ELEVATIONS.

NOTE TO CONTRACTOR
 This project will be constructed under
 the supervision of the CITY ENGINEER
 and conforming to the SPECIFICATIONS
 of the CITY OF WICHITA. The CON-
 TRACTOR shall reimburse the City of
 Wichita for all cost of Engineering, Plans,
 and Inspects.

WILDWOOD LANE
 E.L. RICHMOND AVE TO W.L. MERIDIAN
 AVE.
 26' - 2' - 30' ASPH. CONC
 CITY OF WICHITA, KANSAS
 B.S. SMITH CITY ENGINEER.
 DATE: PRIVATE PROJECT.



NOTE TO CONTRACTOR
 This project will be constructed under the supervision of the CITY ENGINEER and all work shall conform to the specifications of the CITY OF WICHITA. The City of Wichita will reimburse the City of Wichita for all cost of Engineering, Plans, & Inspection.

RICHMOND COURT.
 E.L. RICHMOND AVE TO AND INCLUDING CUL-DE-SAC IN BLK 2, MERIDIAN VILLAGE.
26' - 2' - 30" ASPHALTIC CONC.
 CITY OF WICHITA, KANSAS
 B. E. SMITH CITY ENGINEER.
 DATE: PRIVATE PROJECT.