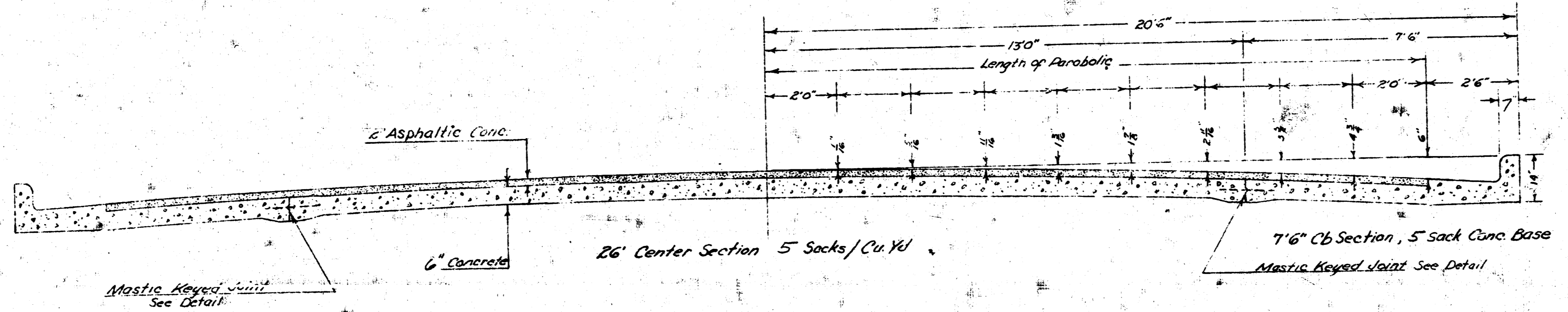
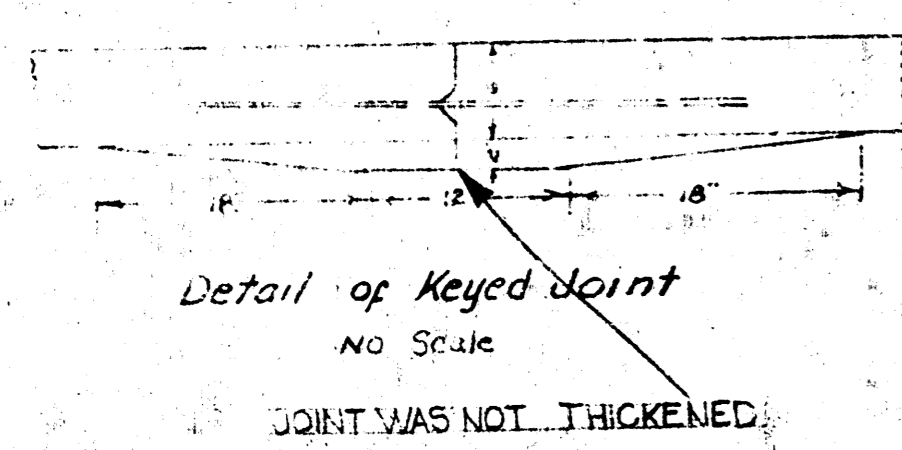


MINNEAPOLIS  
S.L. NORTHERN TO N.L. INDUSTRIAL

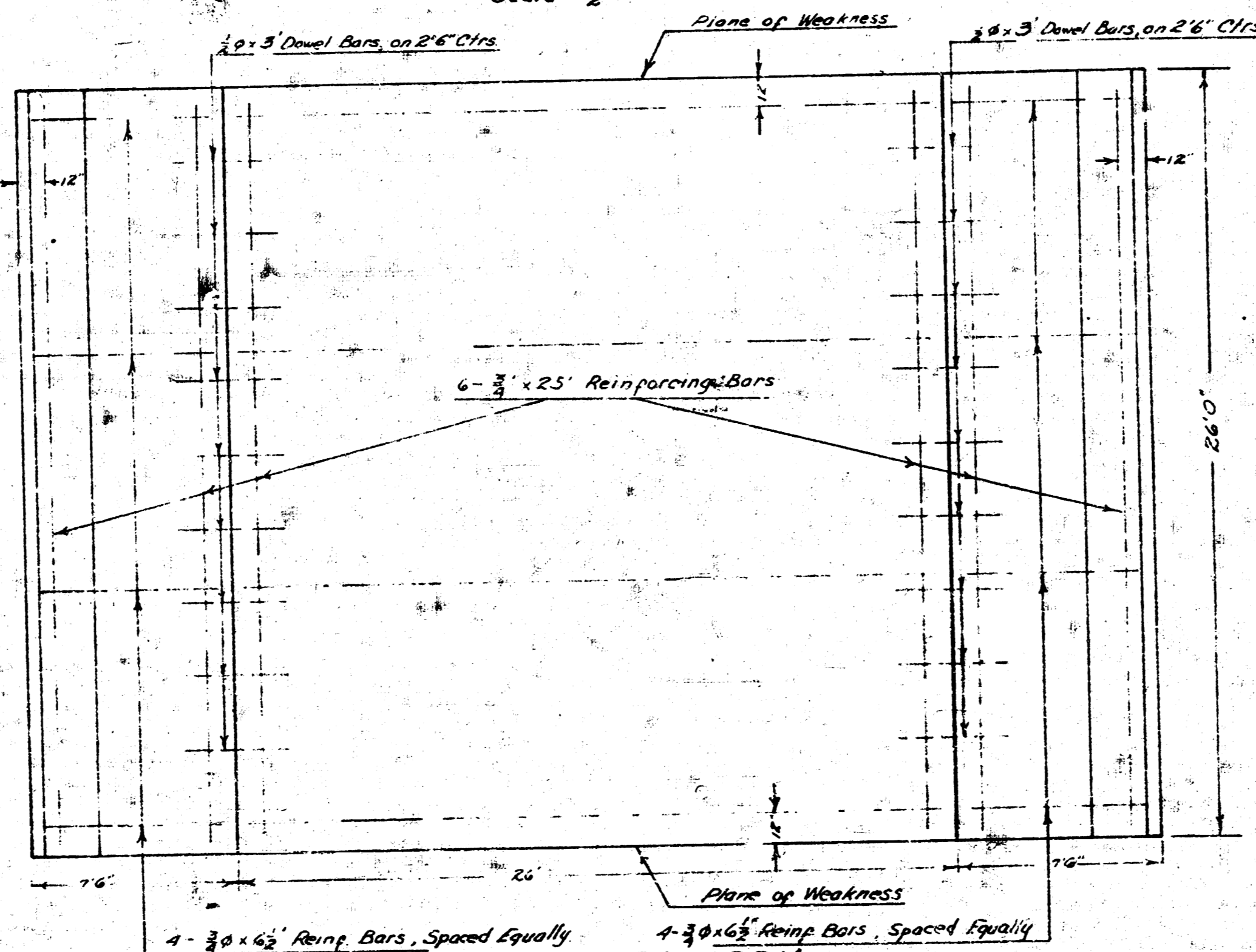


TYPICAL SECTION

Scale  $\frac{1}{2}'' = 1'$

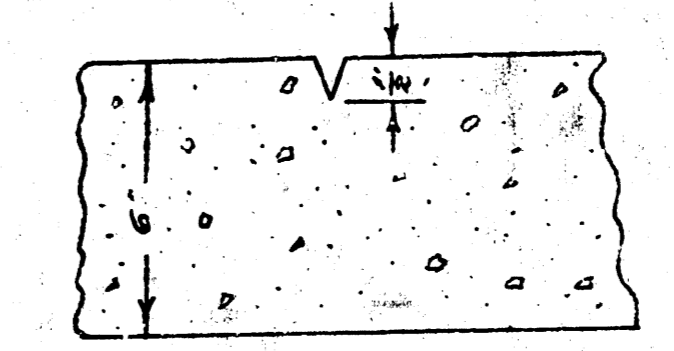


Detail of Keyed Joint  
NO SCALE  
JOINT WAS NOT THICKENED



STEEL PATTERN

Scale  $\frac{1}{4}'' = 1'$



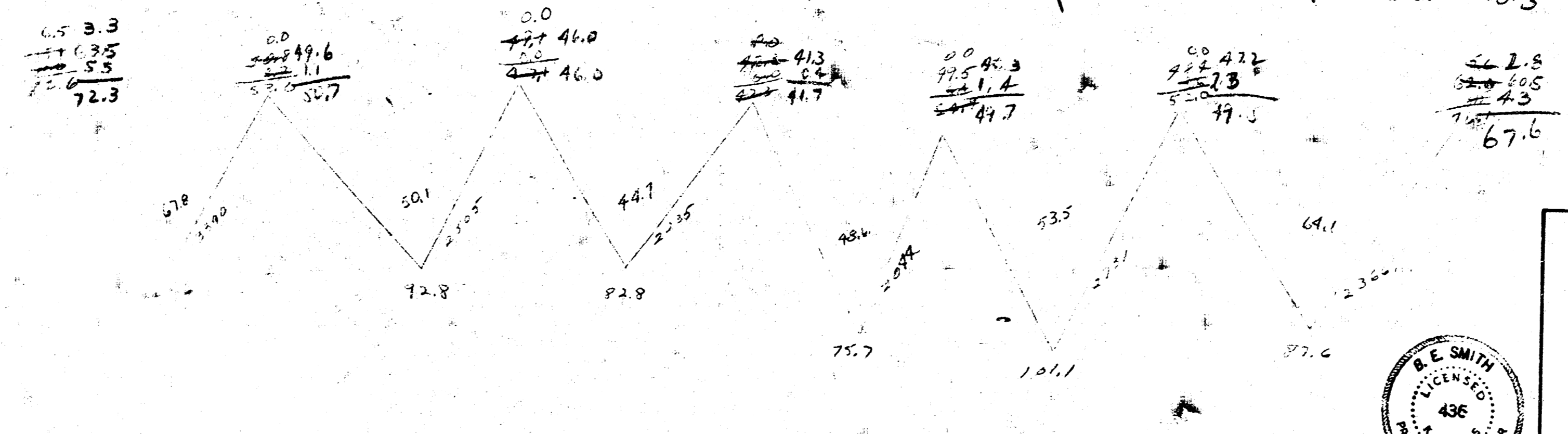
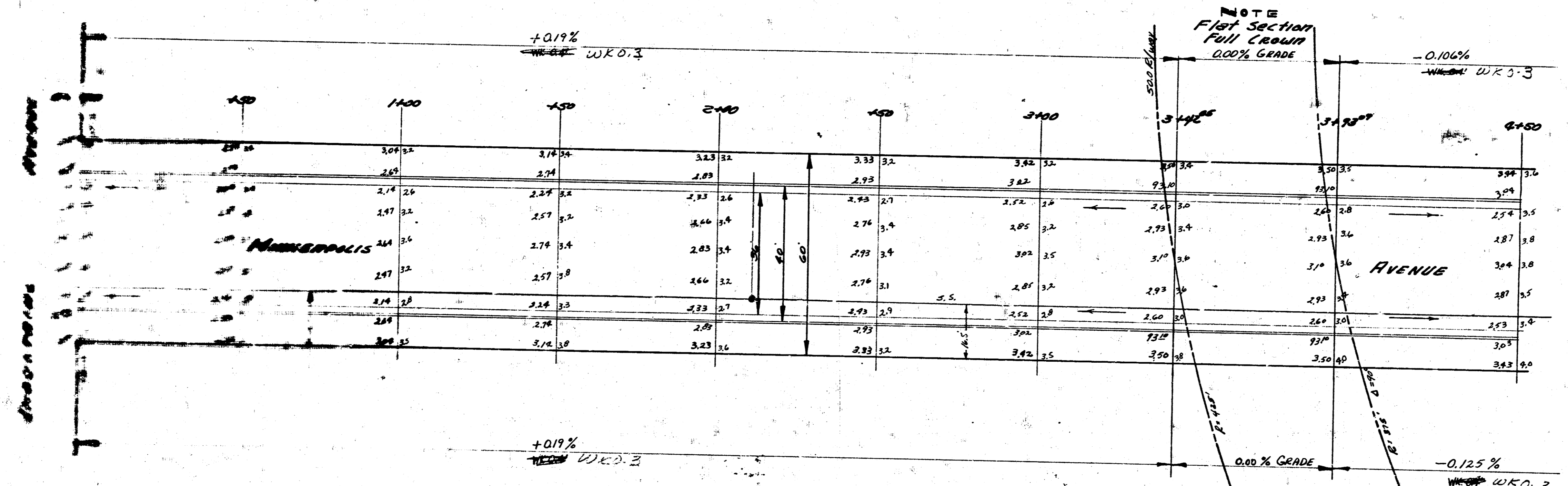
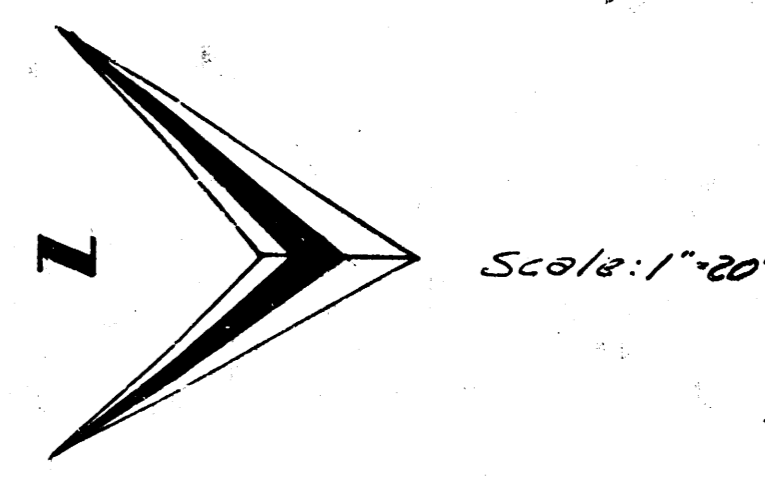
Detail Plane of Weakness  
Plane of Weakness to be cut with  
Double-Edge Groover to Depth as  
Shown in a Straight Line from  
Curb to Curb 20' Ctr. to Ctr.



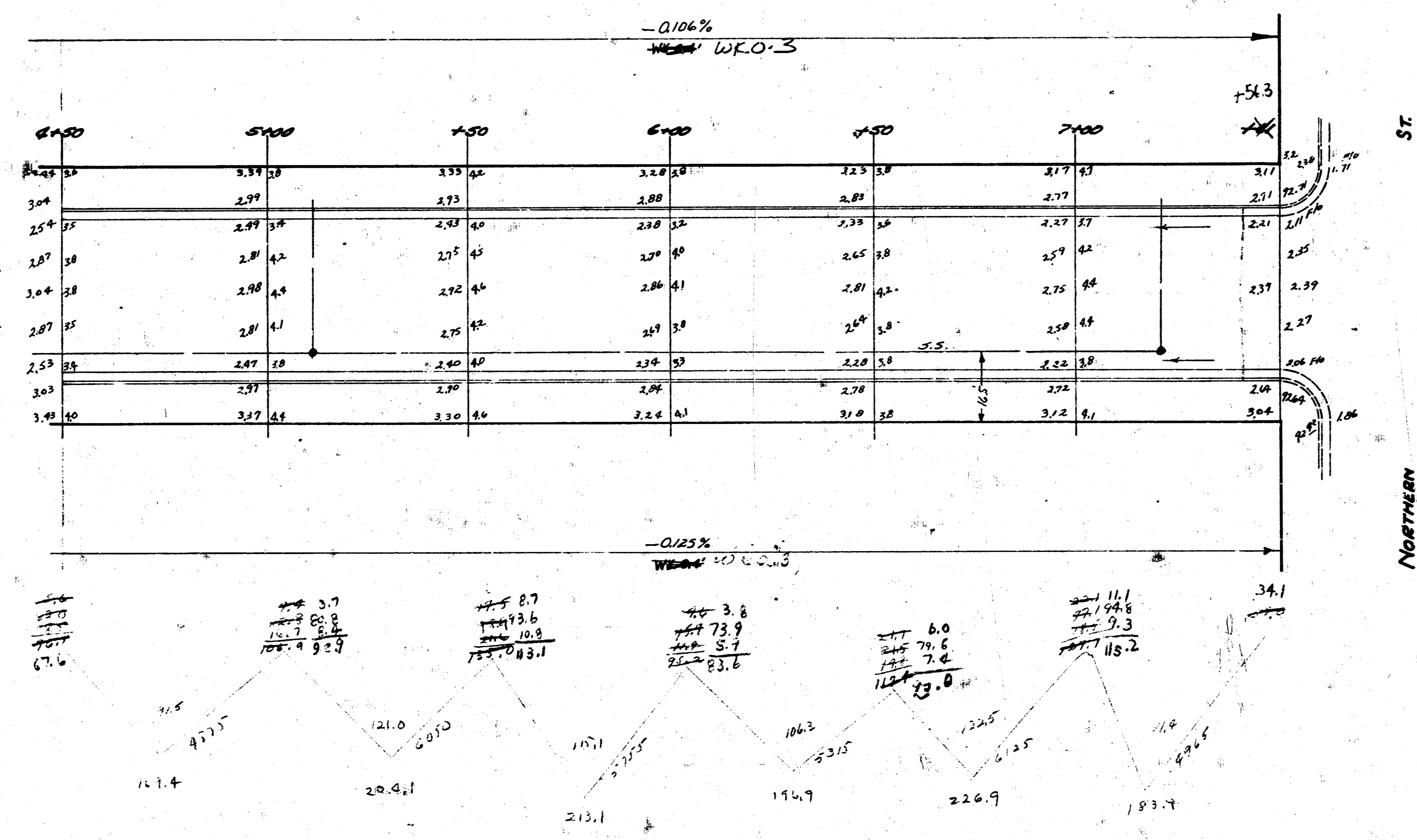
S-18

... NORTHERN CO. S.W. 1/4 SEC. 36, T. 21 N., R. 10 W., S. 18 E.  
... E. 1/2 SEC. 36, T. 21 N., R. 10 W., S. 18 E.  
... Base Loc. is 6 Minneapolis

185.5  
185.6  
185.7  
185.8  
185.9  
186.0  
186.1  
186.2  
186.3  
186.4  
186.5  
186.6  
186.7  
186.8  
186.9  
187.0  
187.1  
187.2  
187.3  
187.4  
187.5  
187.6  
187.7  
187.8  
187.9  
188.0  
188.1  
188.2  
188.3  
188.4  
188.5  
188.6  
188.7  
188.8  
188.9  
189.0  
189.1  
189.2  
189.3  
189.4  
189.5  
189.6  
189.7  
189.8  
189.9  
190.0  
190.1  
190.2  
190.3  
190.4  
190.5  
190.6  
190.7  
190.8  
190.9  
191.0  
191.1  
191.2  
191.3  
191.4  
191.5  
191.6  
191.7  
191.8  
191.9  
192.0  
192.1  
192.2  
192.3  
192.4  
192.5  
192.6  
192.7  
192.8  
192.9  
193.0  
193.1  
193.2  
193.3  
193.4  
193.5  
193.6  
193.7  
193.8  
193.9  
194.0  
194.1  
194.2  
194.3  
194.4  
194.5  
194.6  
194.7  
194.8  
194.9  
195.0  
195.1  
195.2  
195.3  
195.4  
195.5  
195.6  
195.7  
195.8  
195.9  
196.0  
196.1  
196.2  
196.3  
196.4  
196.5  
196.6  
196.7  
196.8  
196.9  
197.0  
197.1  
197.2  
197.3  
197.4  
197.5  
197.6  
197.7  
197.8  
197.9  
198.0  
198.1  
198.2  
198.3  
198.4  
198.5  
198.6  
198.7  
198.8  
198.9  
199.0  
199.1  
199.2  
199.3  
199.4  
199.5  
199.6  
199.7  
199.8  
199.9  
200.0



MINNEAPOLIS  
S.L. NORTHERN TO N.L. INDUSTRIAL  
36-2-40 P.C.  
6' BASE  
CITY OF WICHITA, KANSAS  
L. K. WHITE CITY ENGINEER  
AUGUST 1952 Plan No. C12-111



MINNEAPOLIS  
 2  
 2  
 PROJ. No. C-12-113