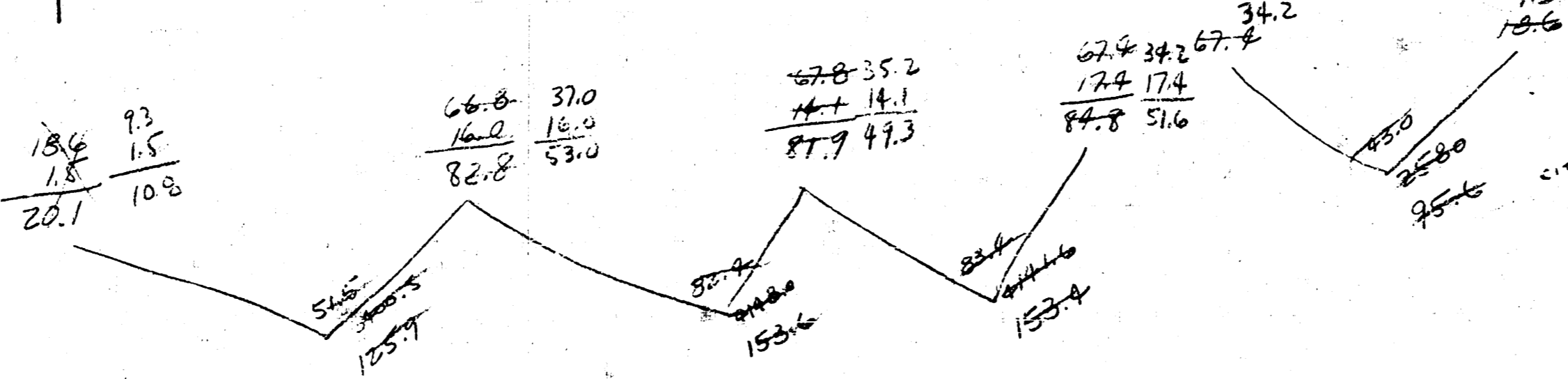
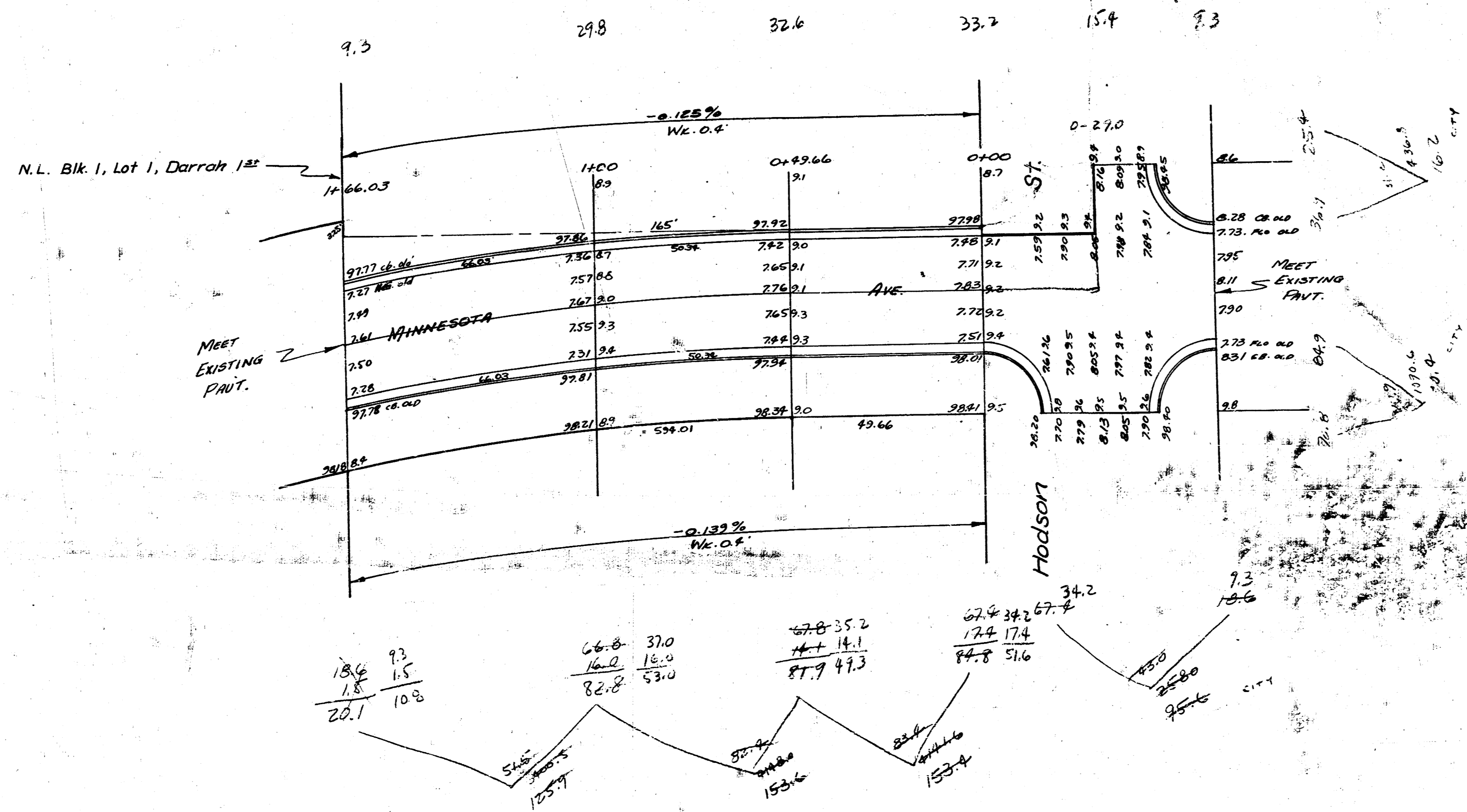
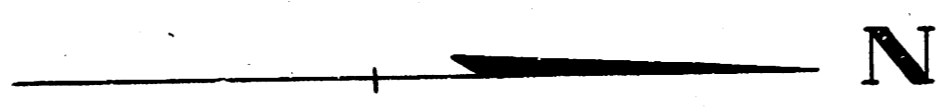


B.M. 98.28 "R" IN RITCHIE TOP CO. W.S. MINNESOTA & N.L. HODSON
 Note: STATIONING IS ON E

PROP.	CITY
125.9	95.6
153.6	95.8
153.4	152.2
432.4	152.2
+10.6	+12.8
475.6	167.4



W/4 of MINNESOTA AVE.
 N.L. BLK. 1, LOT 1, DARRAGH 1ST TO N.L. HODSON
 13'-2"-15" P.C.
 CITY OF WICHITA, KANSAS
 L.K. WHITE CITY ENGINEER
 AUGUST 1949 PROJECT NO. 14-145, 146, 147

PROPERTY

132.8
 112.9
 75.9
 89.4
 88.0
 99.0
 119.8
 130.9
 135.0
 140.9
 90.5
 1206.3
 +10% 1246.9
 1578.9 cu yds

