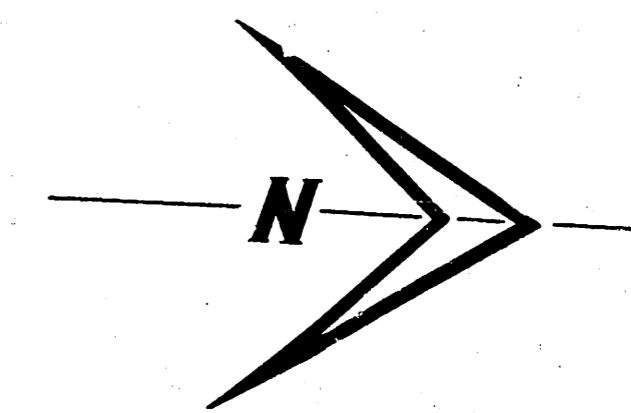
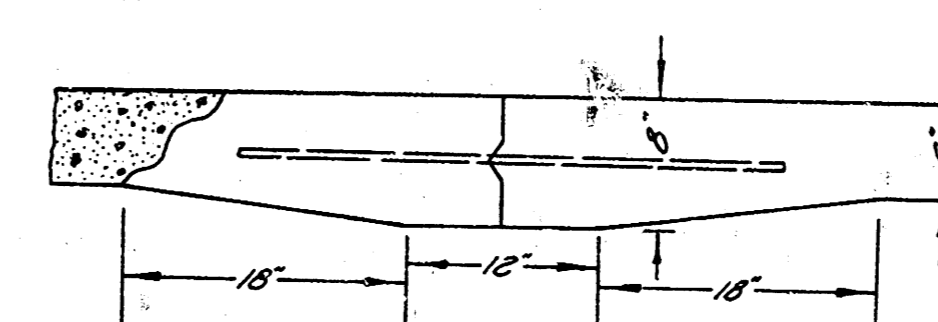


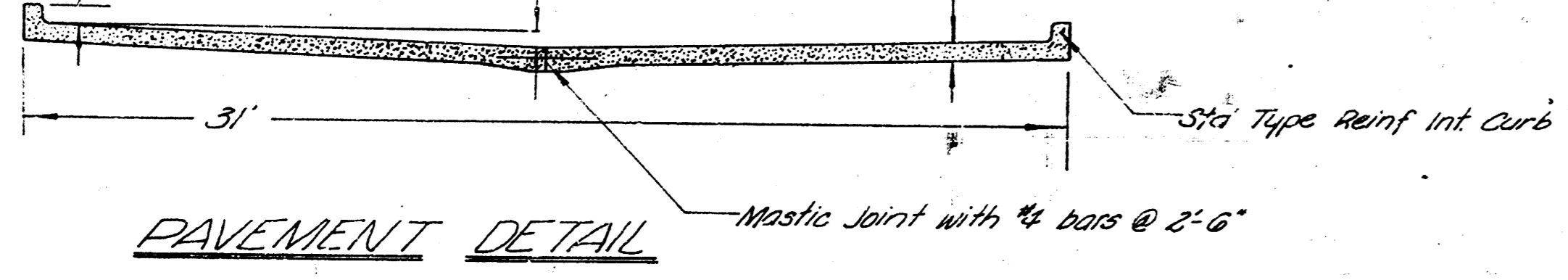
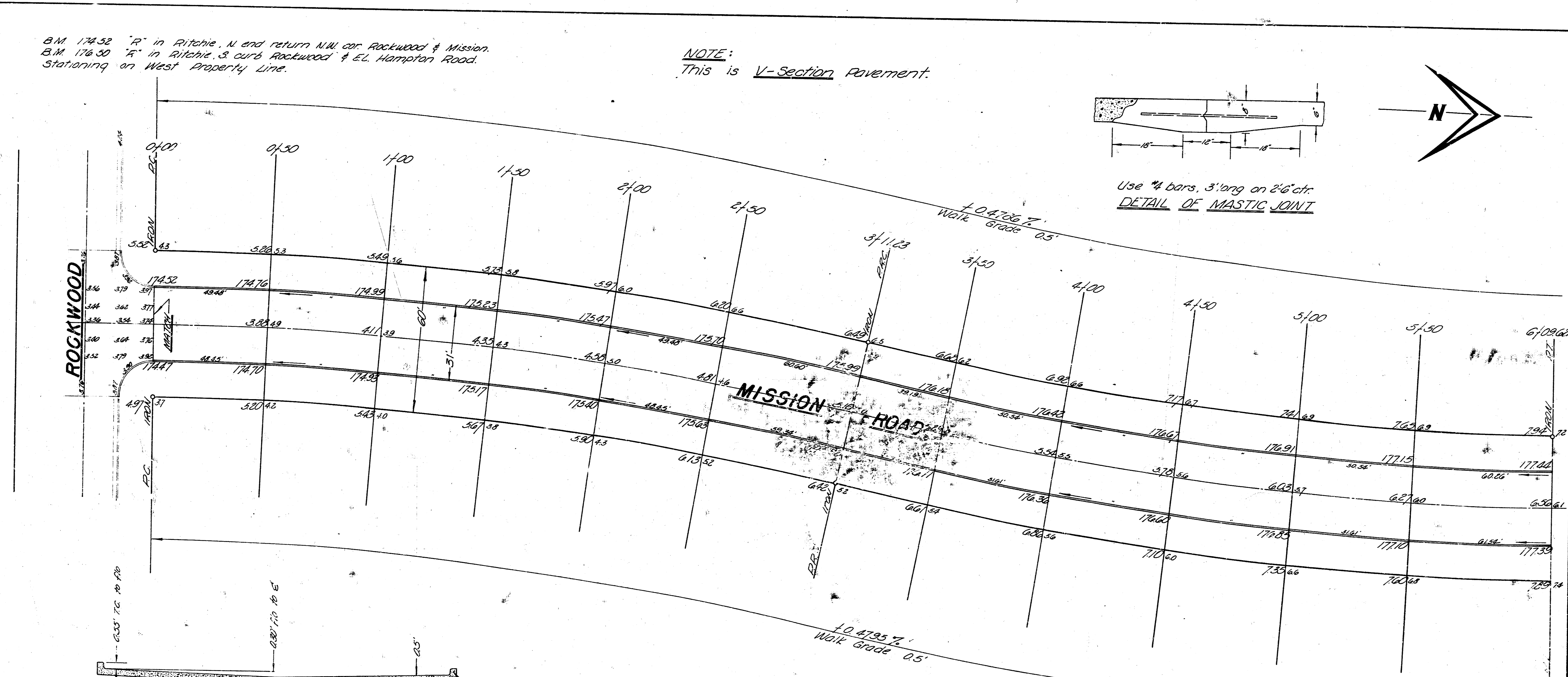
B.M. 174.52 "R" in Ritchie, N end return NW cor Rockwood & Mission.
 B.M. 176.50 "F" in Ritchie, S curb Rockwood & EL. Hampton Road.
 Stationing on West Property Line.

NOTE:
 This is V-Section Pavement.



Use #4 bars, 3' long on 2'-6" ctr.
DETAIL OF MASTIC JOINT

JAK
 J
 JMT



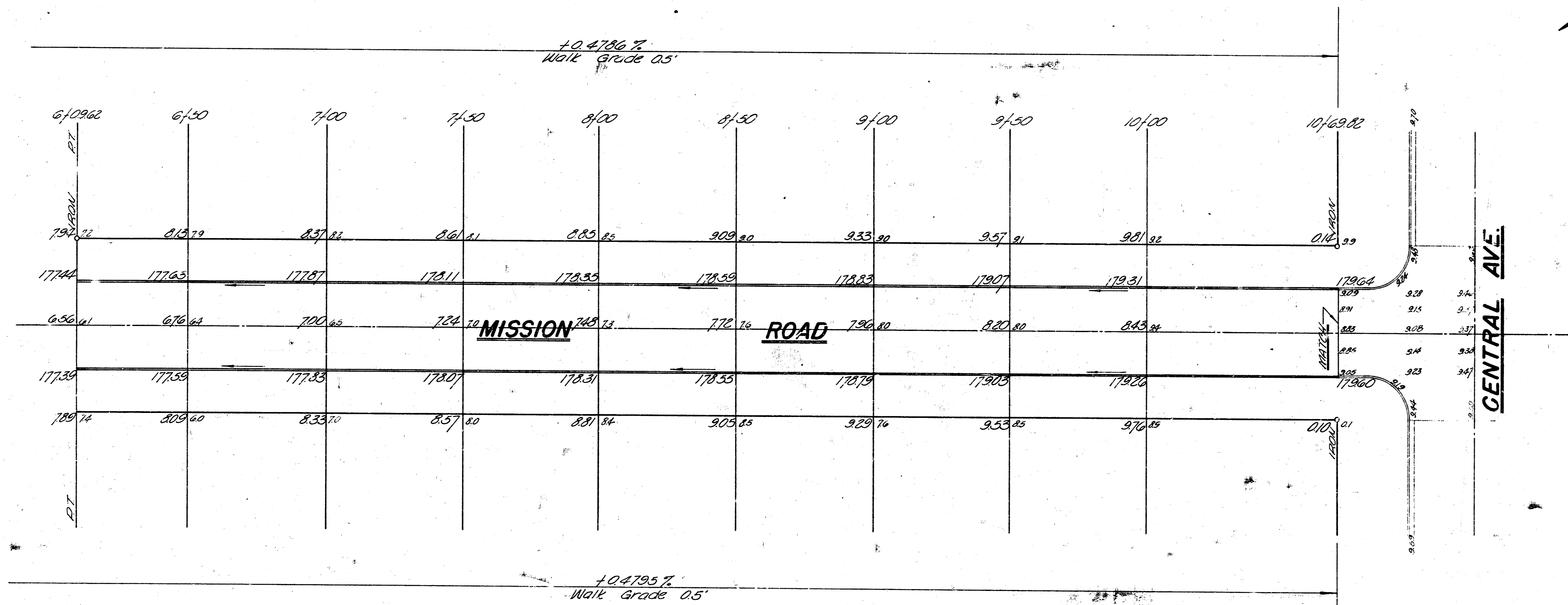
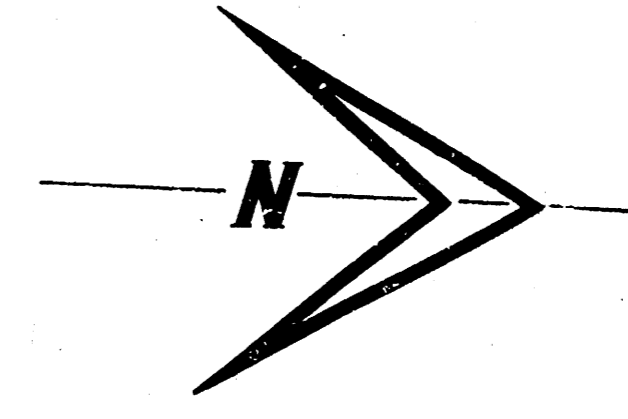
EXCAVATION	COMP. FILL
421.7	136.0
42.1	12.6
463.2	133.6



MISSION ROAD
 N. L. ROCKWOOD TO S. L. CENTRAL
30' CONC. & CB.
 CITY OF WICHITA, KANSAS
 B. E. SMITH CITY ENGINEER
 DATE: MARCH 1962 PROJ. NO. CIO-44

B.M. 17962 "R" in Ritchie, E. curb Mission & S.L. Central.

NOTE:
This is V-Section Pavement.



CURVE DATA

Stationing on W.E. R = 14.54' Min = 118219/ft

D = 12° 15' 52" L = 311.83'

Sta	Area	W.E.	W.E. 8' off curb	W.E. 8' off curb	Defl.	E. Defl.
6+00					0° 39' 07"	0° 53' 07"
6+50	3000	49.29	49.22	49.24		7° 53' 35"
7+00						2° 57' 20"
7+50						3° 56' 26"
8+00					0° 39' 07"	4° 55' 33"
8+50	3000	49.29	49.22	49.24		1° 12' 23"
9+00						6° 07' 36"

CURVE DATA

Stationing on W.E. R = 13.94' Min = 123306/ft

D = 12° 15' 52" L = 298.39'

Sta	Area	W.E.	W.E. 8' off curb	W.E. 8' off curb	Defl.	E. Defl.
9+11.23					0° 47' 40"	0° 47' 40"
9+50	3877	38.76	38.96	40.84		1° 49' 23"
10+00	3000	49.29	50.22	51.29	1° 01' 39"	2° 51' 07"
10+50						3° 56' 26"
11+00					1° 01' 39"	4° 55' 33"
11+11.23	3877	38.76	38.96	40.84		1° 13' 31"

MISSION ROAD
N.L. ROCKWOOD TO S.L. CENTRAL
C10-44