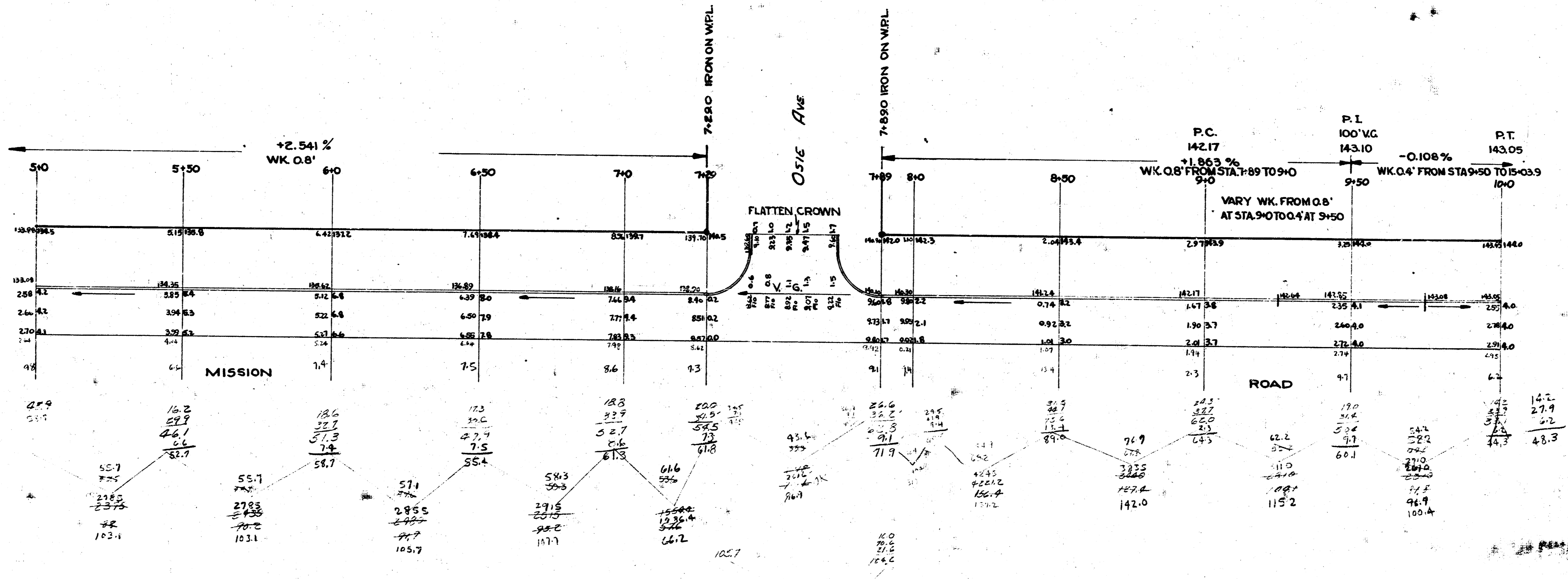
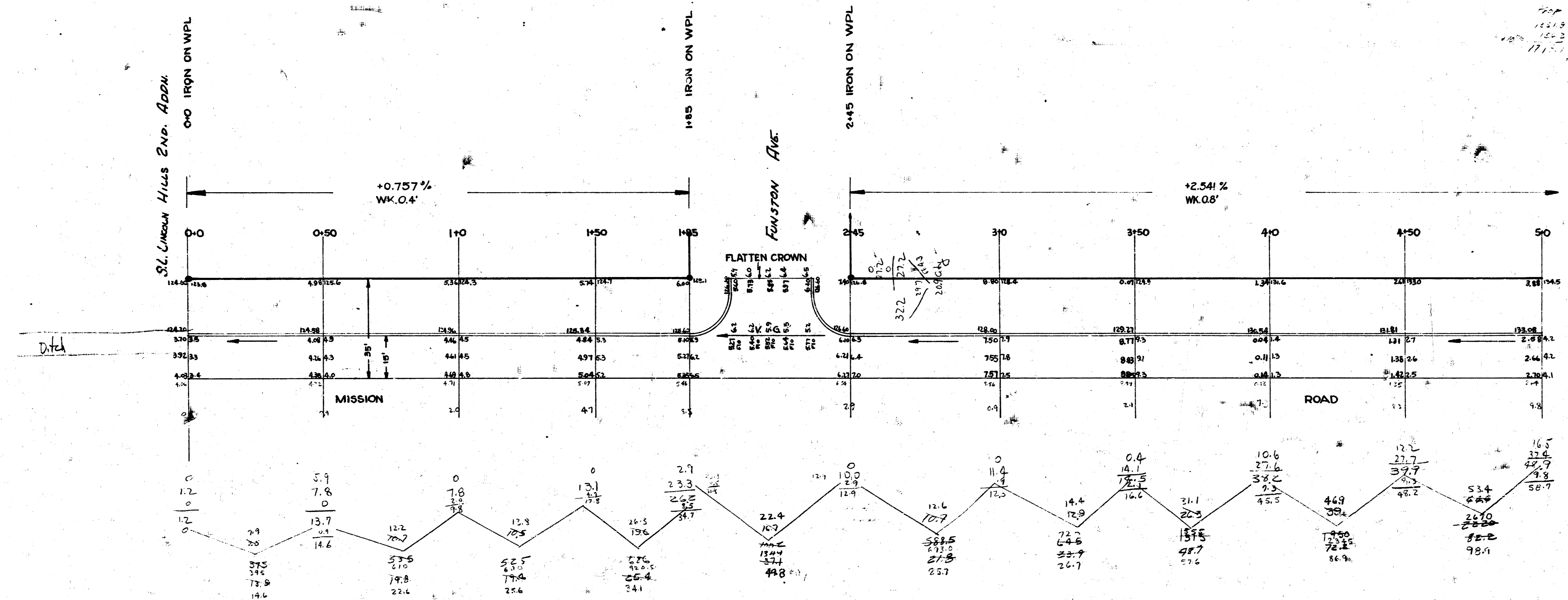


C12-266



B.M. 12955 E.RIM MH ON WIS. E.S. WOODLAWN, APPROX. 200' SE OF S.W. COR. FUNSTON & WOODLAWN.



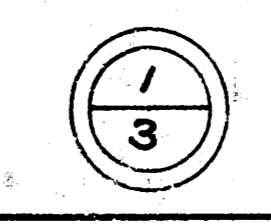
Handwritten notes and calculations in the upper right corner of the drawing area.

Vertical text on the left side of the drawing, possibly a reference or note.

Sheet 1  
 Prop 3273 City 458



1" = 20'



W. & MISSION RD.  
 S.L. HARRY TO 185' S OF S.L. FUNSTON  
 15' CONC & CB.

CITY OF WICHITA, KANSAS  
 B.E. SMITH CITY ENGINEER  
 Feb. 3, 1953 Proj. No. C12-266