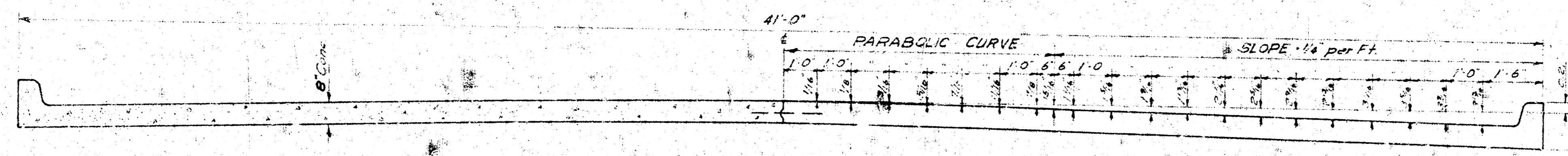
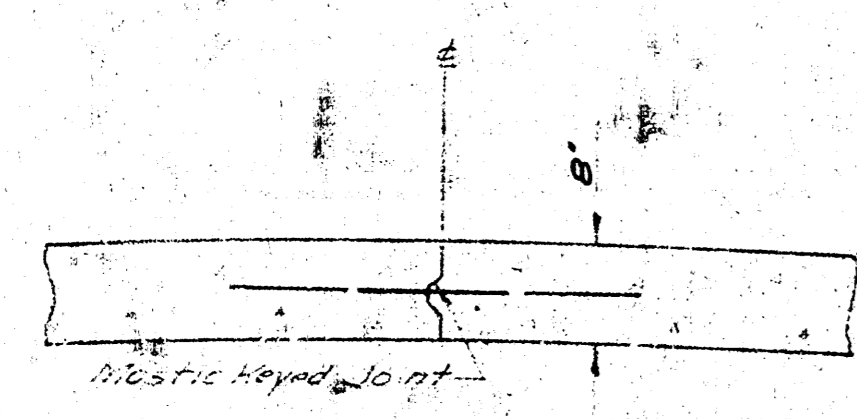


MONROE STREET
 From EL. Florence St. TO WL. West St
 B.E. SMITH - City Engineer City of Wichita, Kansas

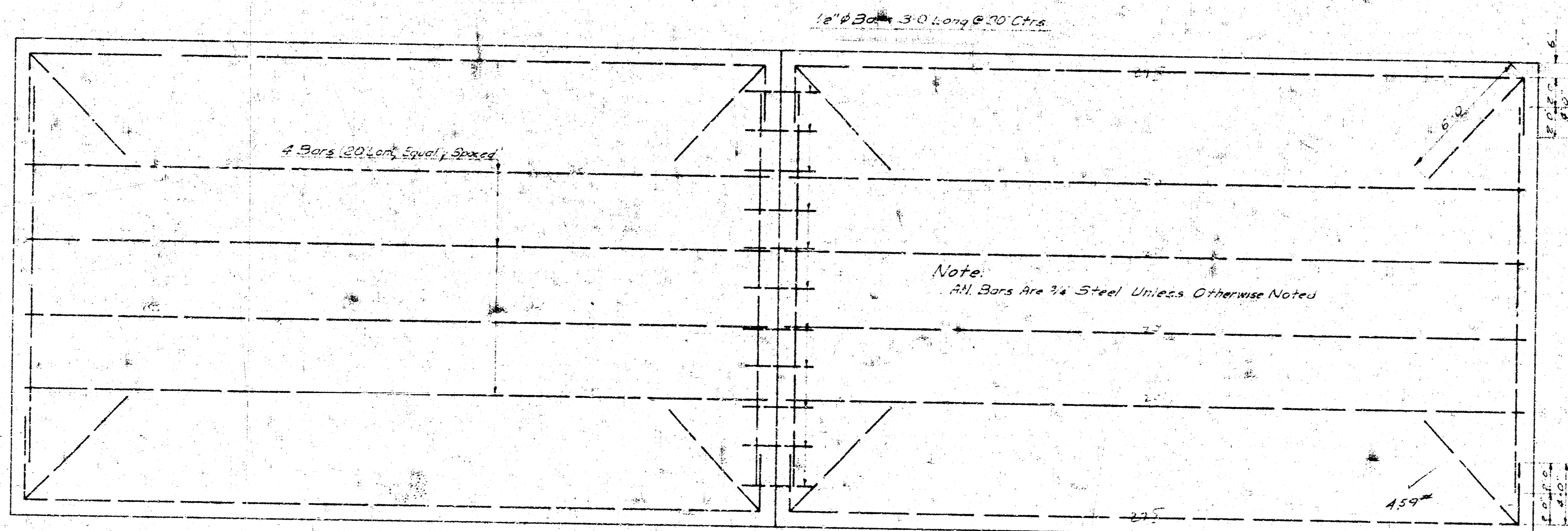
Project No. C18-73



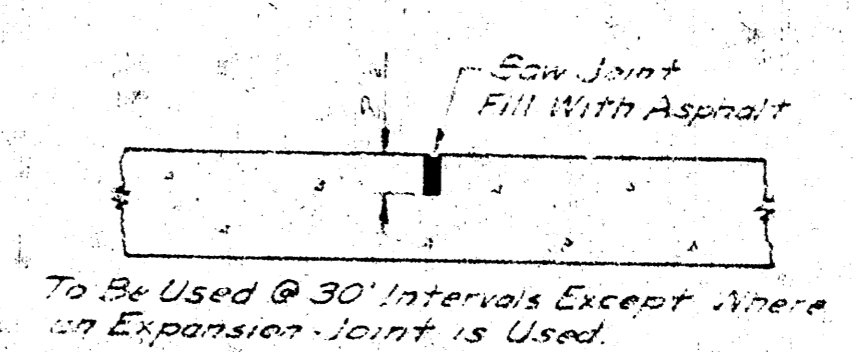
TYPICAL SECTION
NO SCALE



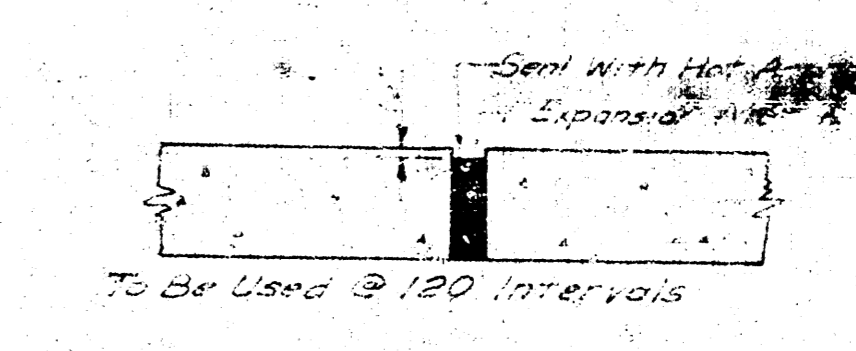
DETAIL OF KEYED JOINT
NO SCALE



STEEL PATTERN
NO SCALE



DETAIL OF CONTRACTION JOINT
NO SCALE

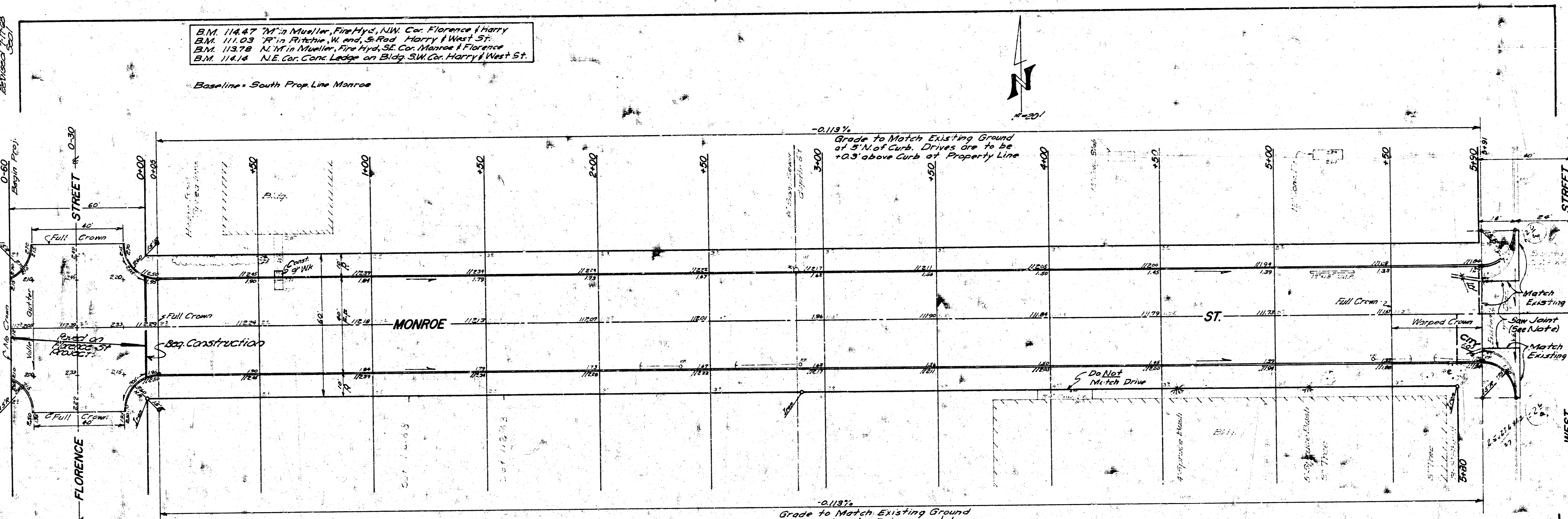


DETAIL OF EXPANSION JOINT
NO SCALE

Shown Piped in 4" AP 40
 Paved
 Checked 7/2/63

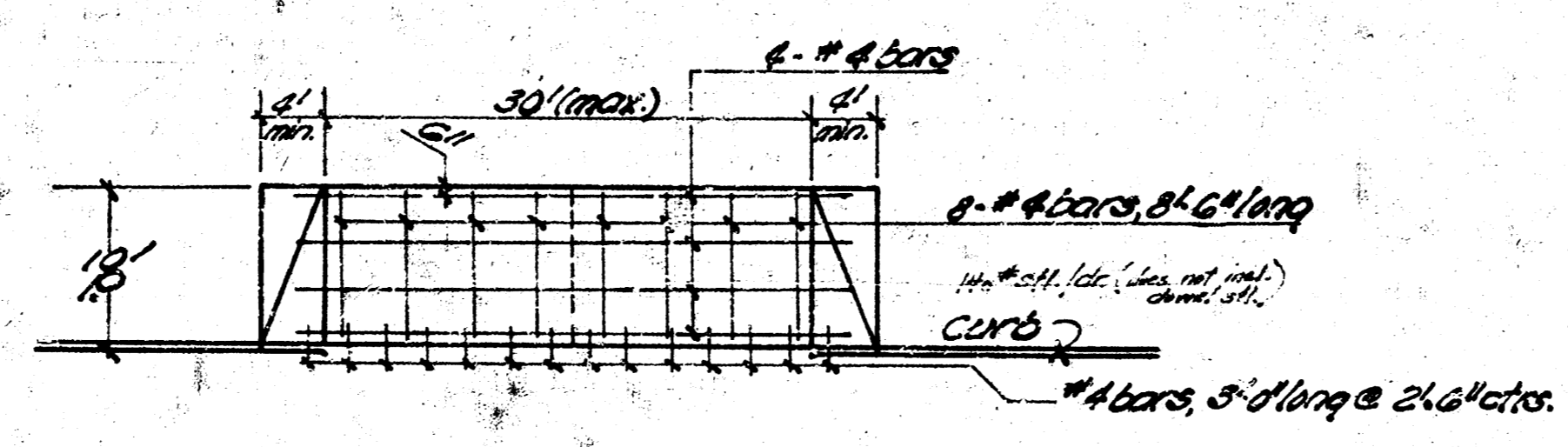
B.M. 114.67 M. in Mueller, Fire Hydr., NW. Cor. Florence & Harry
 B.M. 111.03 2" in Ratchet, W. end of Road Harry & West St.
 B.M. 113.78 N.W. in Mueller, Fire Hydr., SE. Cor. Monroe & Florence
 B.M. 114.14 N.E. Cor. Conc. Ledge on Bldg. SW. Cor. Harry & West St.

Baseline = South Prop. Line Monroe



Grade to Match Existing Ground
 at S. S. of Curb. Drives are to be
 +2.3' above Curb at Property Line.

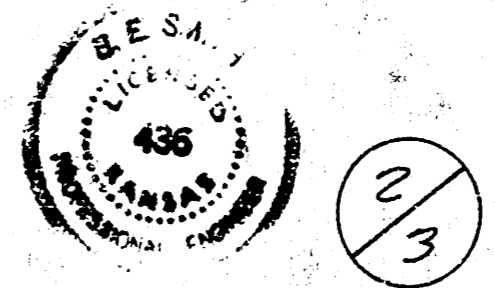
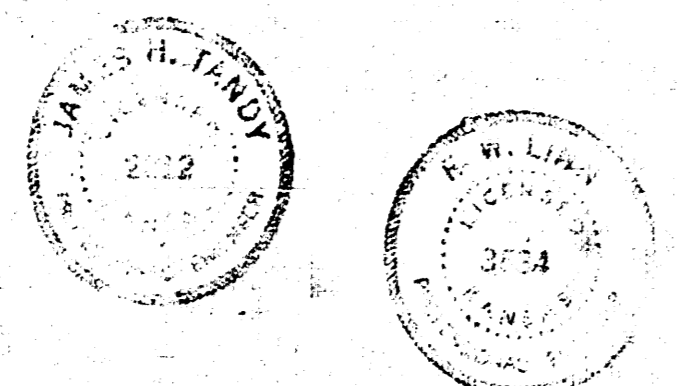
Note:
 Do Not Remove Reinf. Steel at Joints.
 Tie New Steel to Existing.



EARTHWORK QUANTITIES

Excavation	Fill
1486.4 C.Y.	5844.4 C.Y.
148.6 C.Y.	0.6 C.Y.
1635.0 C.Y.	5789.4 C.Y.

MONROE STREET
 From E.L. FLORENCE STREET
 To W.L. WEST STREET
 40' 8" CONCRETE & INT. CURB
 B. E. SMITH CITY ENGINEER
 CITY OF WICHITA, KANSAS
 DATE JULY 1963 C 18-73



2/3