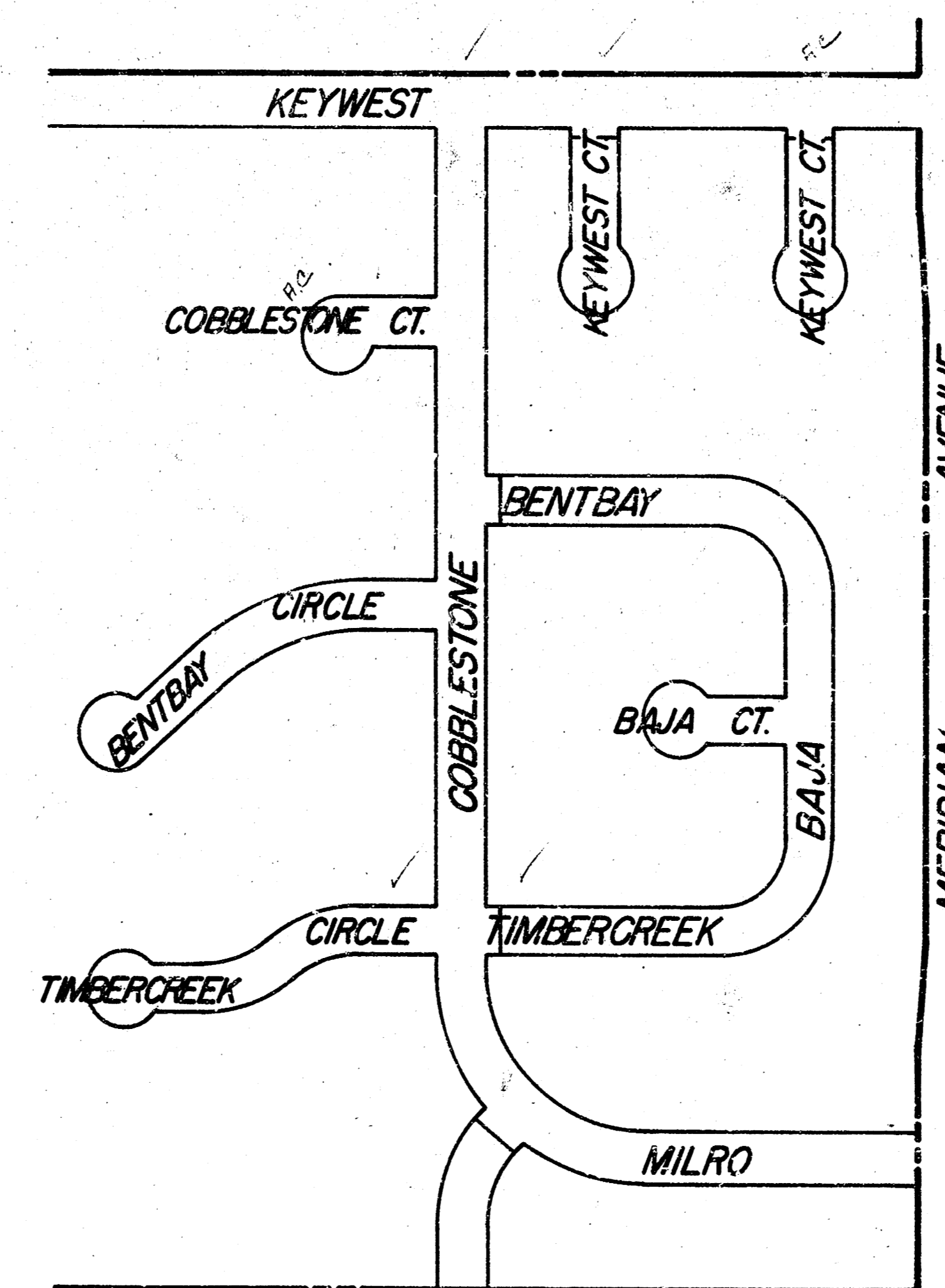
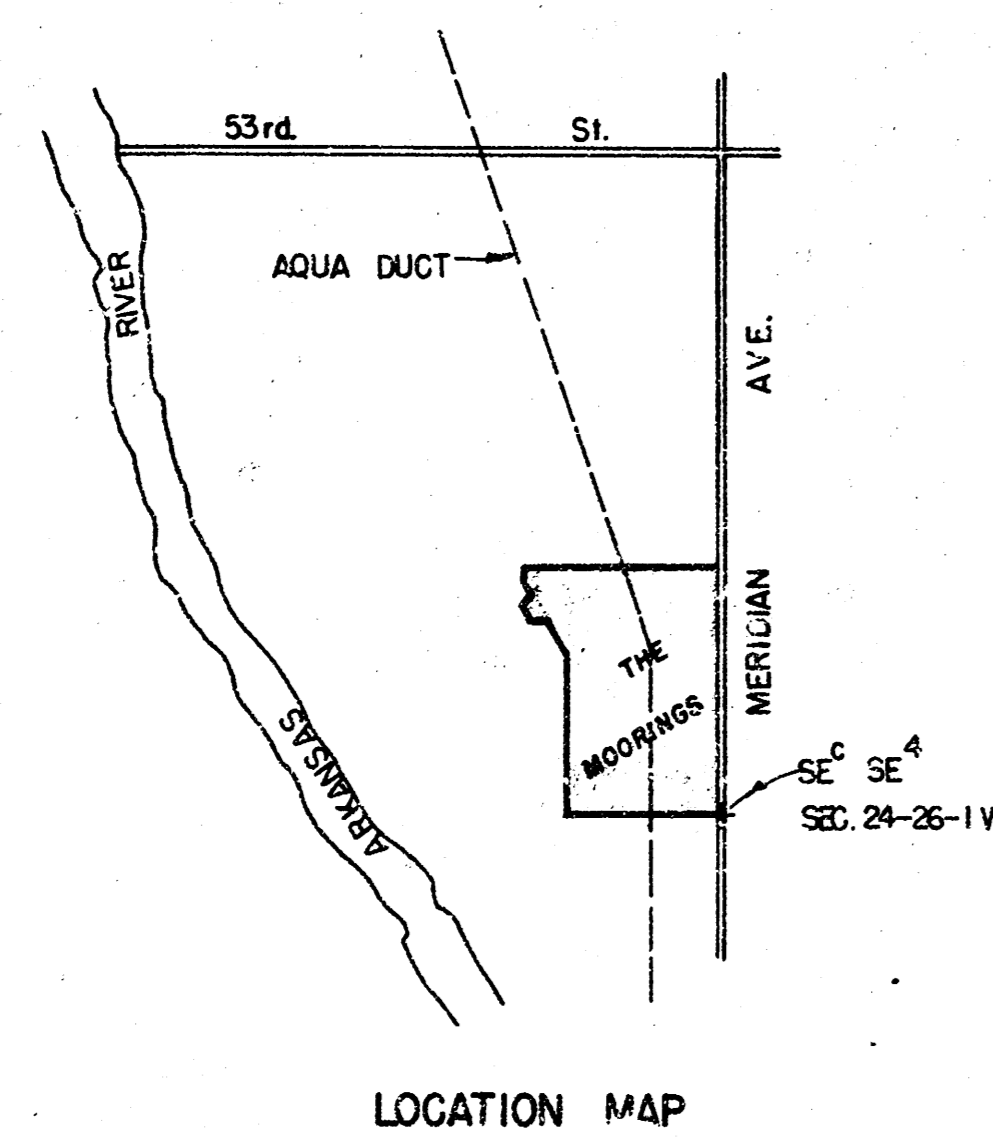


**THE MOORINGS**  
**PROJECT NO. DAKS 577107**  
**472 76 245 80598 000 000 001**

COBBLESTONE AND MILRO - W.L. MERIDIAN TO S.L. KEYWEST  
 COBBLESTONE COURT - W.L. COBBLESTONE TO & INCLUDING CUL-DE-SAC  
 BENTBAY CIRCLE - W.L. COBBLESTONE TO & INCLUDING CUL-DE-SAC  
 TIMBERCREEK CIRCLE - W.L. COBBLESTONE TO & INCLUDING CUL-DE-SAC  
 KEYWEST - W.L. COBBLESTONE TO W.L. MERIDIAN



*Not to Scale  
 Use Primary calculated  
 quantities for location  
 & comparison*



CITY of WICHITA  
 R. W. LINN - CITY ENGINEER

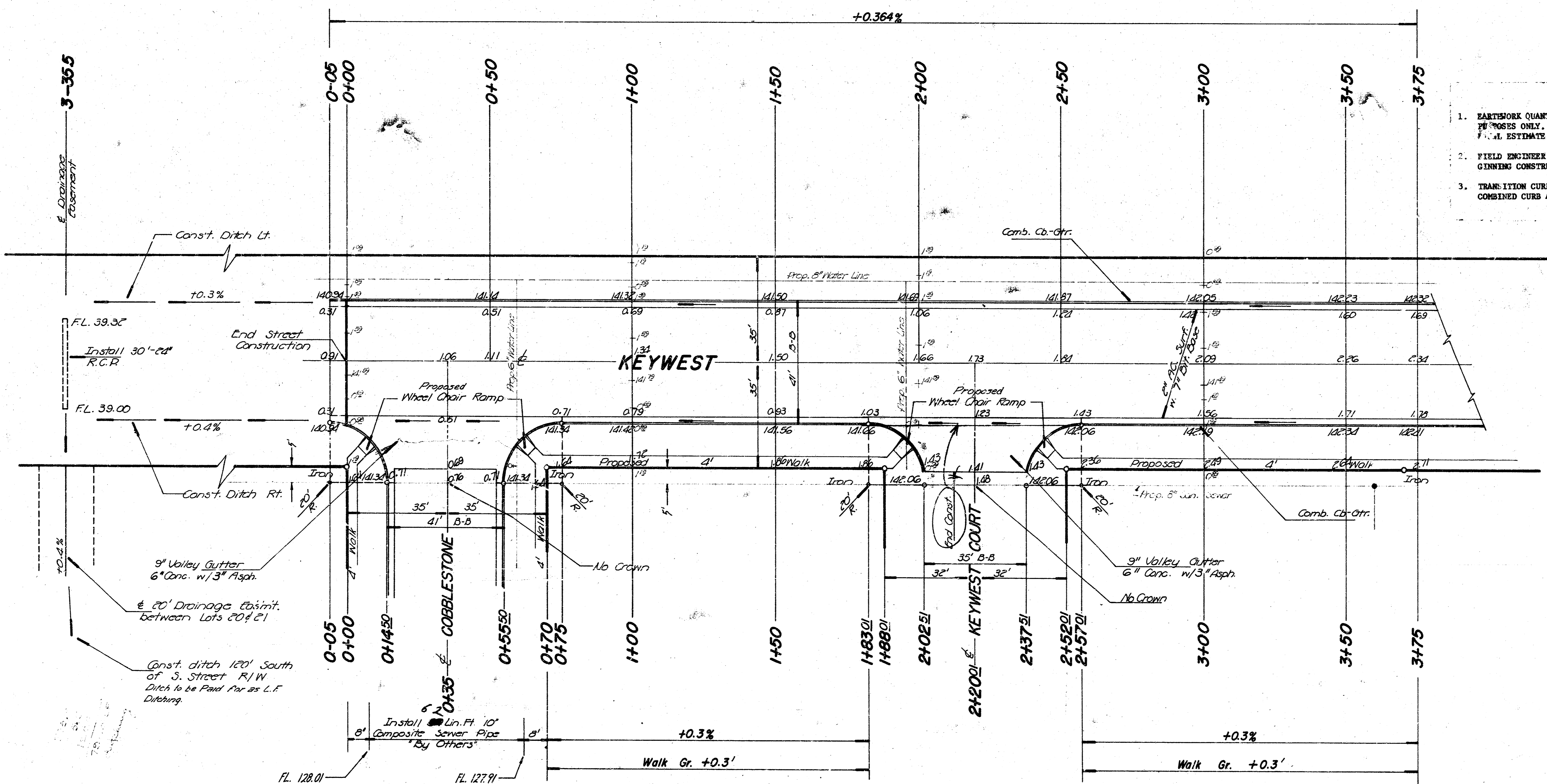
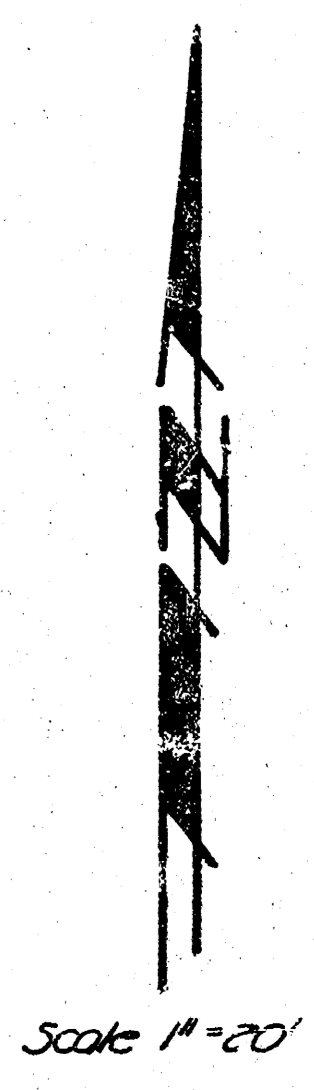
B.M. 141.07 "□" In S. Headwall, Culvert at 45th St. N. and Meridian

NOTE TO FIELD ENGINEER & CONTRACTOR  
GRADE PARKING AND CLEAR RIGHT-OF-WAY FOR PROPOSED SIDEWALK. COMPACT FILL IN SIDEWALK AREA. TO BE CONSTRUCTED BY "OTHERS"

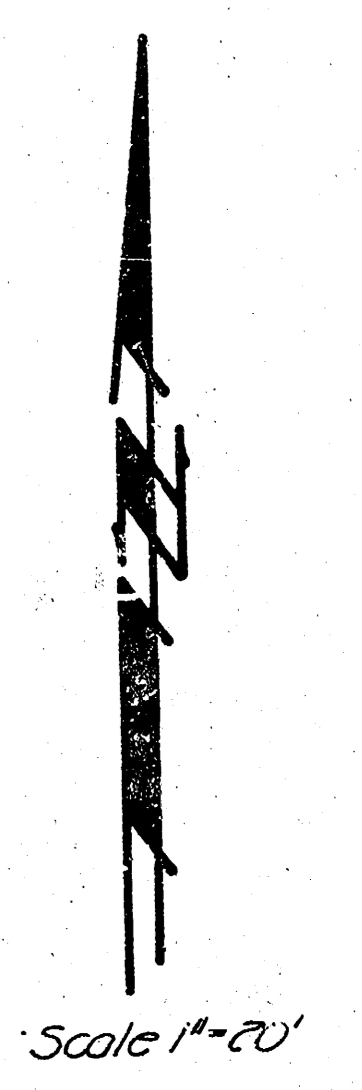
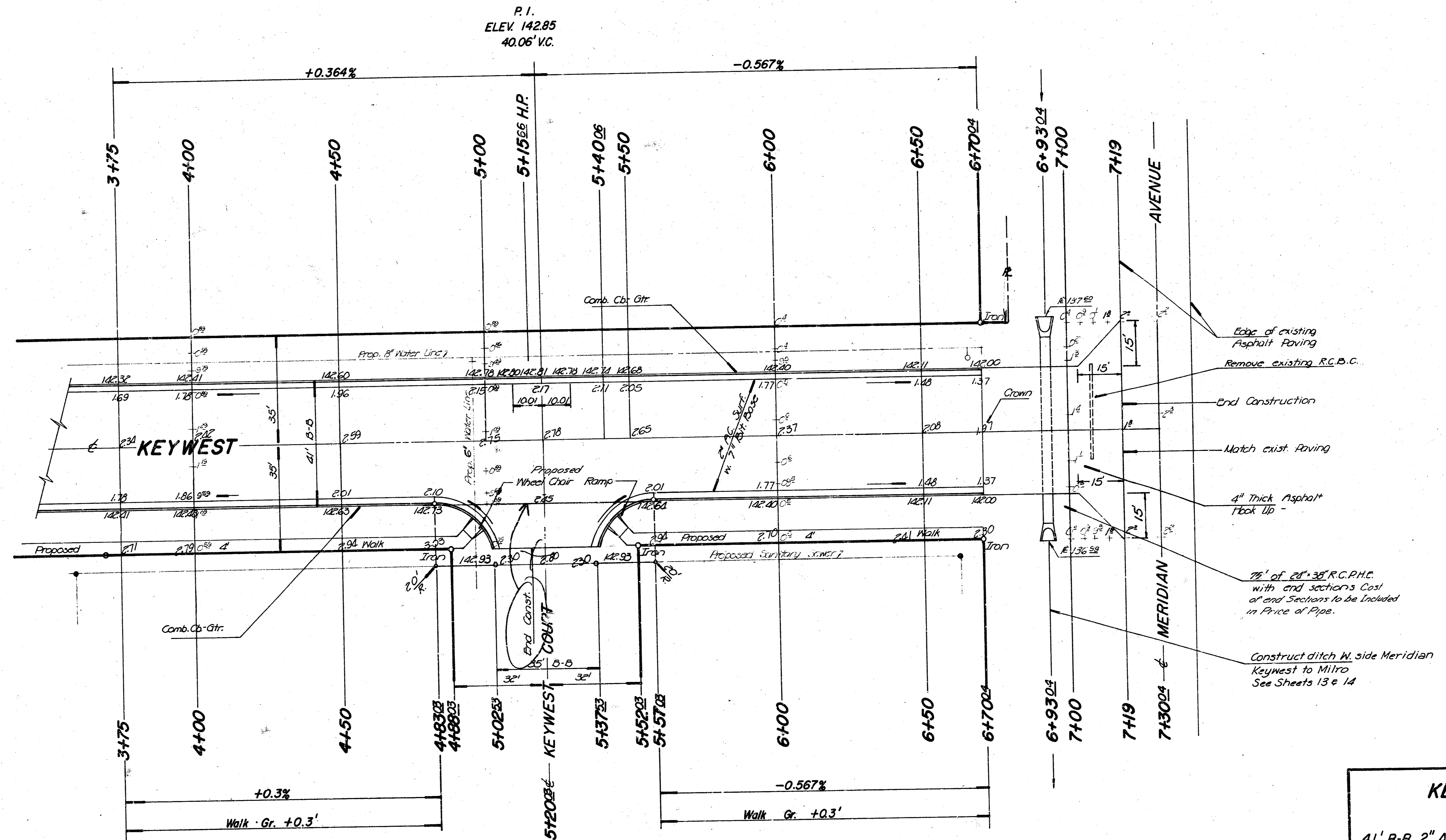
**SUB-GRADE**  
TYPE OF SUB-GRADE TREATMENT SHALL BE DETERMINED BY THE FIELD ENGINEER. SUB-GRADE TREATMENT MAY CONSIST OF LIME TREATMENT, CEMENT TREATMENT, SUB-GRADE MODIFICATION, OR ANY COMBINATION OF THESE.

NOTE:  
THE PAVING CONTRACTOR AWARDED THIS CONTRACT SHALL CORRELATE ALL WORK WITH THE DRAINAGE, SANITARY AND WATER CONTRACTORS.

- GENERAL NOTES
1. EARTHWORK QUANTITIES ARE ESTIMATES AND ARE FOR BIDDING PURPOSES ONLY. QUANTITIES WILL BE CALCULATED AT TIME FINAL ESTIMATE IS WRITTEN.
  2. FIELD ENGINEER IS TO CROSS-SECTION PROJECT BEFORE BEGINNING CONSTRUCTION.
  3. TRANSITION CURB IS TO BE PAID FOR AS L.F. ROLL-TYPE COMBINED CURB AND GUTTER.



B.M. 141.07 "D" In S. Headwall, Culvert at 45th St. N. and Meridian

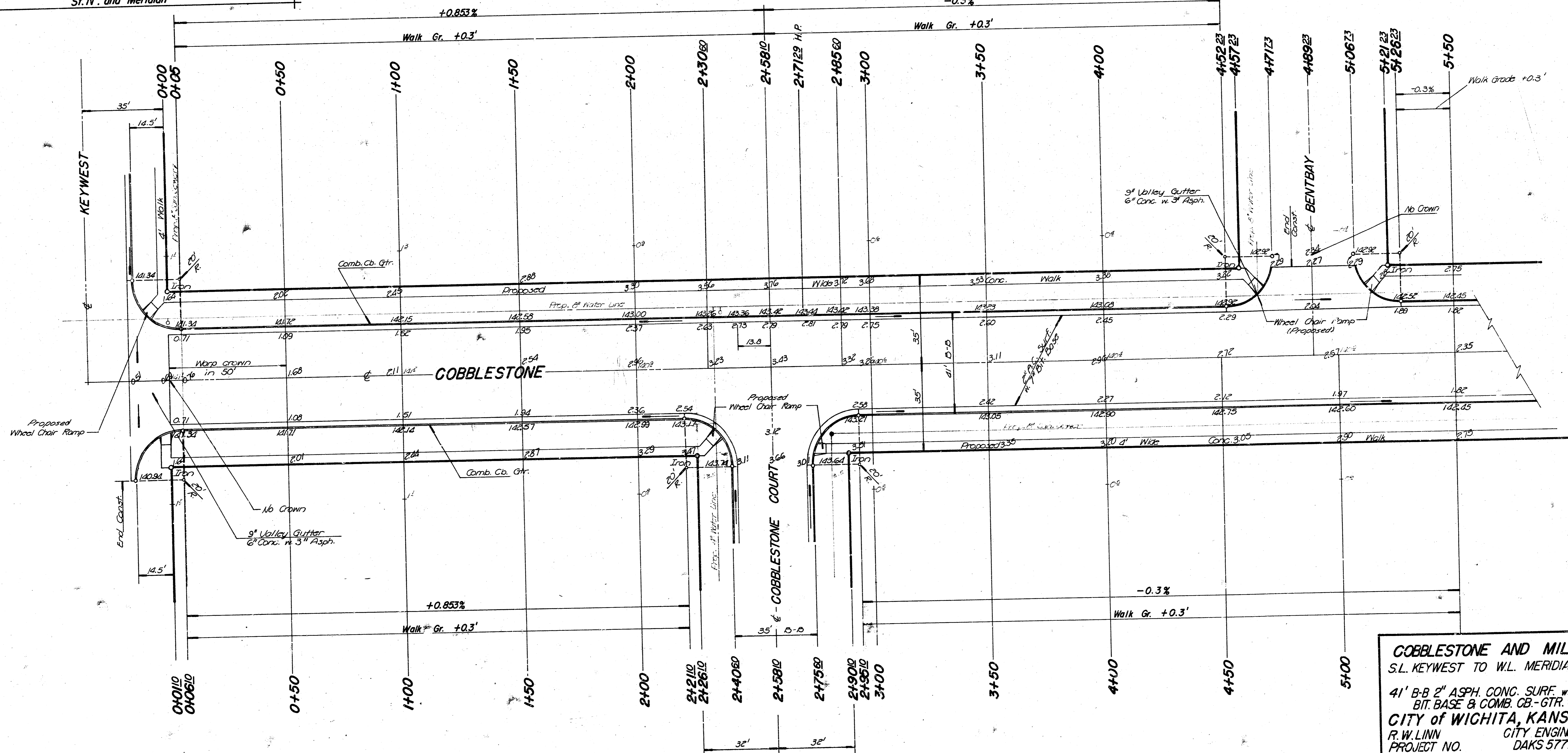


**KEYWEST**  
 41' B-B 2" ASPH. CONC. SURF. w. 7" BIT. BASE & COMB. CB.-GTR.  
**CITY of WICHITA, KANSAS**  
 R.W. LINN CITY ENGINEER  
 PROJECT NO. DAKS577107  
 DATE 3/18/85

B.M. 141.07 "□" in S. Headwall, Culvert at 45th.  
St. N. and Meridian

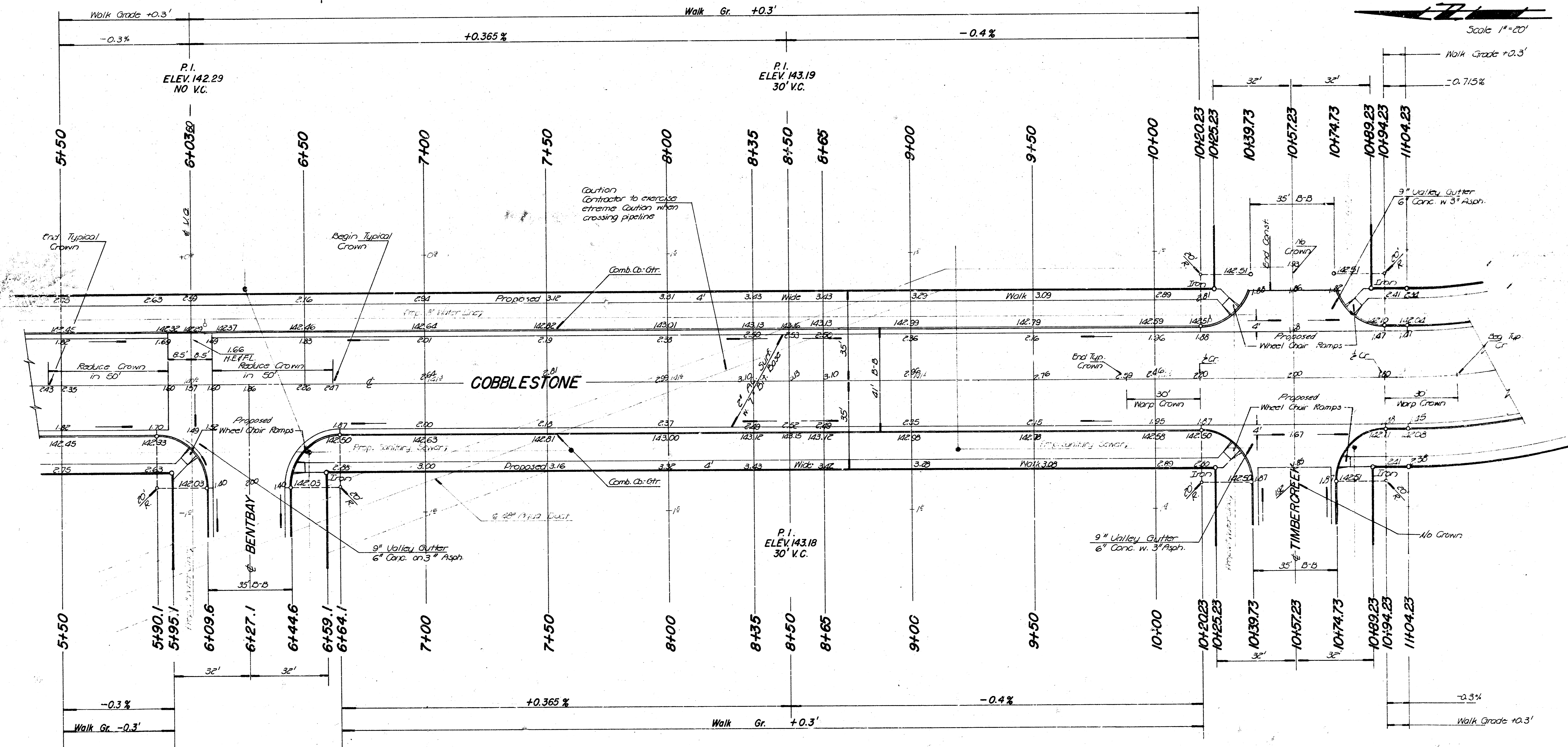
P.I.  
ELEV. 143.50  
55' V.C.

Scale 1"=20'

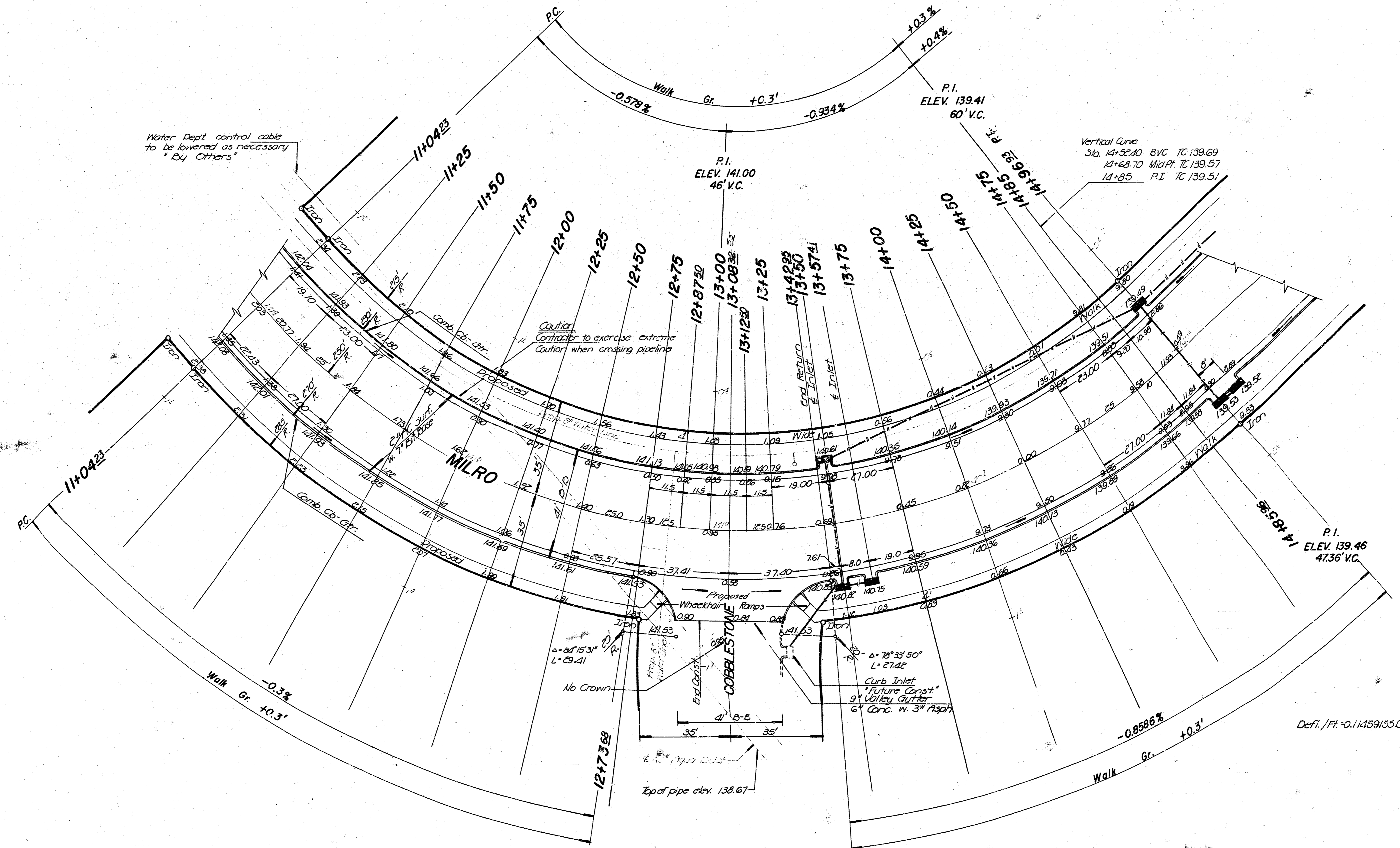


**COBBLESTONE AND MILRO**  
S.L. KEYWEST TO W.L. MERIDIAN  
41' B-B 2" ASPH. CONC. SURF. w. 7" BIT. BASE & COMB. CB.-GTR.  
**CITY OF WICHITA, KANSAS**  
R. W. LINN CITY ENGINEER  
PROJECT NO. DAKS 577107  
DATE: 7/12

B.M. 141.07 "□" in S. Headwall, Culvert at 45th. St. N. and Meridian



B.M. 141.07 "□" in S. Headwall, Culvert at 45th.  
St. N. and Meridian

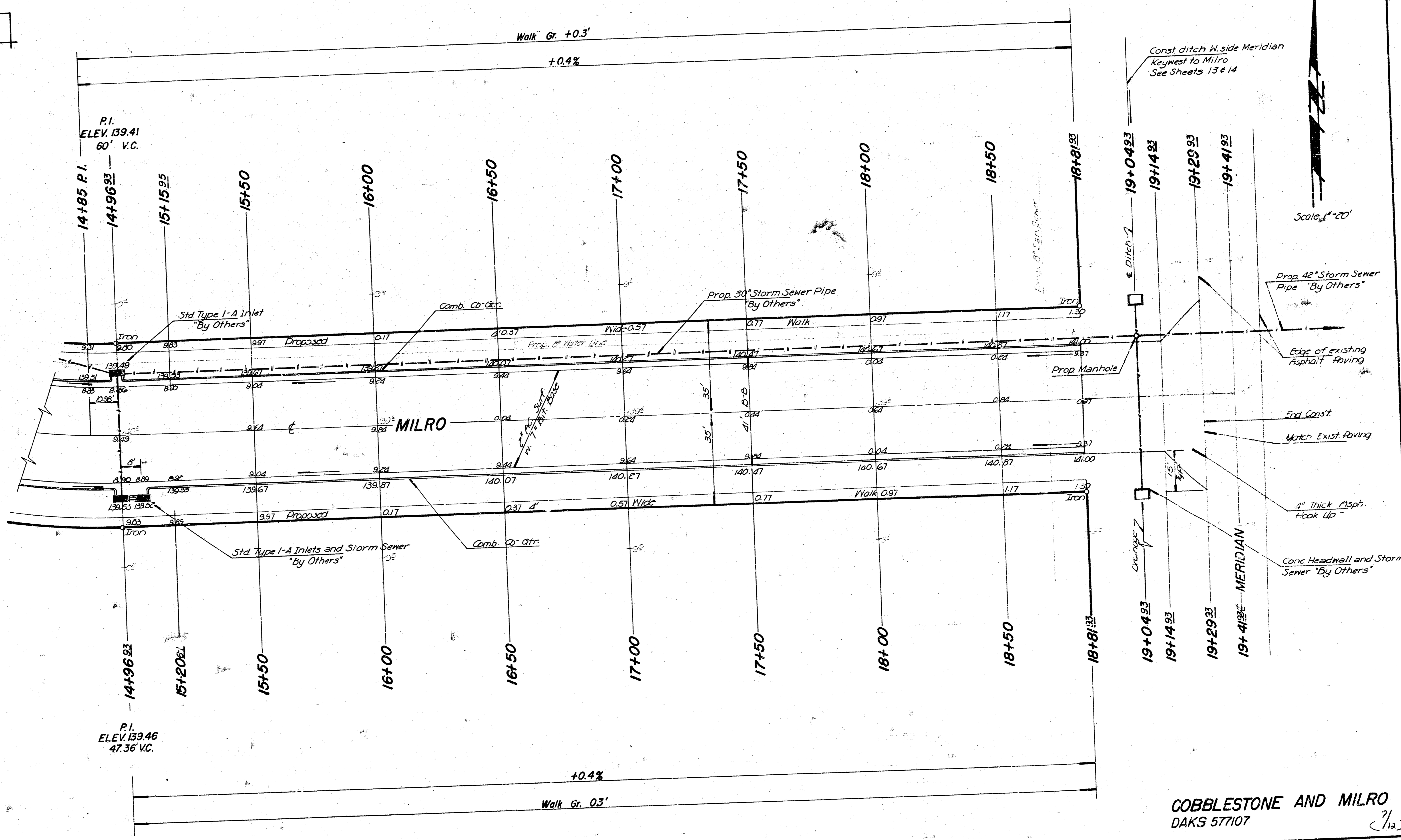


$\Delta = 90^\circ$  R=250 T=250 L=382.70 LC=353.53

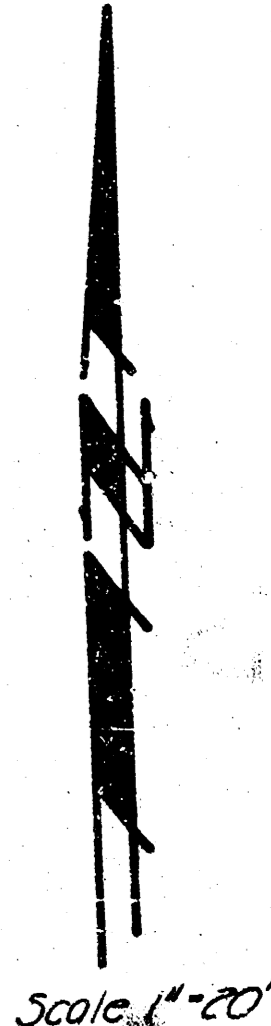
CURVE DATA BASED ON $\Delta = 90^\circ$ RAD. $\Delta = 90^\circ 00'$					
STA.	E	CHORD LENGTH	DEFLECTION	TOTAL	DEFLECTION
11+04.23	—	—	0°00'00"	0°00'00"	0°00'00"
11+25	20.77	18.44	2°22'48"	2°22'48"	2°22'48"
11+50	25.00	22.19	2°51'53"	5°14'41"	5°14'41"
11+75	25.00	22.19	2°51'53"	8°06'34"	8°06'34"
12+00	25.00	22.19	2°51'53"	10°58'27"	10°58'27"
12+25	25.00	22.19	2°51'53"	13°50'20"	13°50'20"
12+50	25.00	22.19	2°51'53"	16°42'13"	16°42'13"
12+75	23.68	21.02	2°26'49"	19°25'02"	19°25'02"
12+96.93	1.32	1.17	0°09'05"	19°34'07"	19°34'07"
12+96.93	12.50	11.10	1°25'57"	21°00'04"	21°00'04"
13+00	12.50	11.10	1°25'57"	22°26'04"	22°26'04"
13+08.32	8.32	7.39	0°57'12"	23°23'13"	23°23'13"
13+12.5	4.18	3.71	0°28'44"	23°51'57"	23°51'57"
13+25	12.50	11.10	1°25'57"	25°17'54"	25°17'54"
13+25.95	17.95	15.94	2°03'25"	27°21'19"	27°21'19"
13+50	7.05	6.26	0°48'28"	28°09'47"	28°09'47"
13+57.41	7.41	6.58	0°50'57"	29°00'44"	29°00'44"
13+75	17.59	15.62	2°00'56"	31°01'40"	31°01'40"
14+00	25.00	22.19	2°51'53"	33°53'33"	33°53'33"
14+25	25.00	22.19	2°51'53"	36°45'26"	36°45'26"
14+50	25.00	22.19	2°51'53"	39°37'19"	39°37'19"
14+52.40	2.40	2.13	0°16'30"	39°53'49"	39°53'49"
14+58.70	16.30	14.47	1°52'04"	41°45'53"	41°45'53"
14+75	6.30	5.59	0°43'19"	42°29'12"	42°29'12"
14+85	10.00	8.88	1°08'45"	43°37'57"	43°37'57"
14+85.96	0.96	0.85	0°06'36"	43°44'33"	43°44'33"
14+96.93	10.97	9.73	1°15'47"	45°00'00"	45°00'00"

COBBLESTONE AND MILRO  
DAKS 577107

B.M. 141.07 "□" In S. Headwall, Culvert at 45th.  
St. N. and Meridian

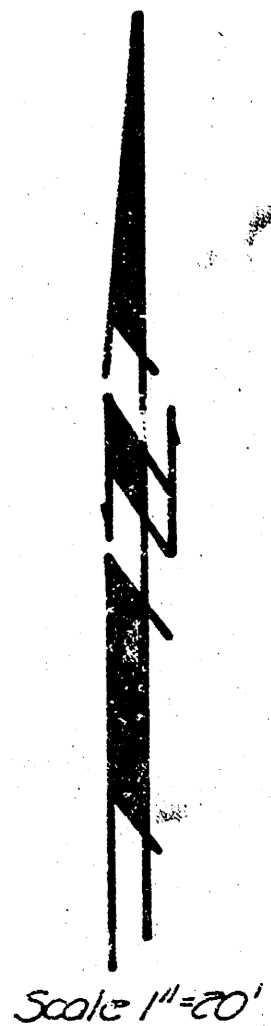
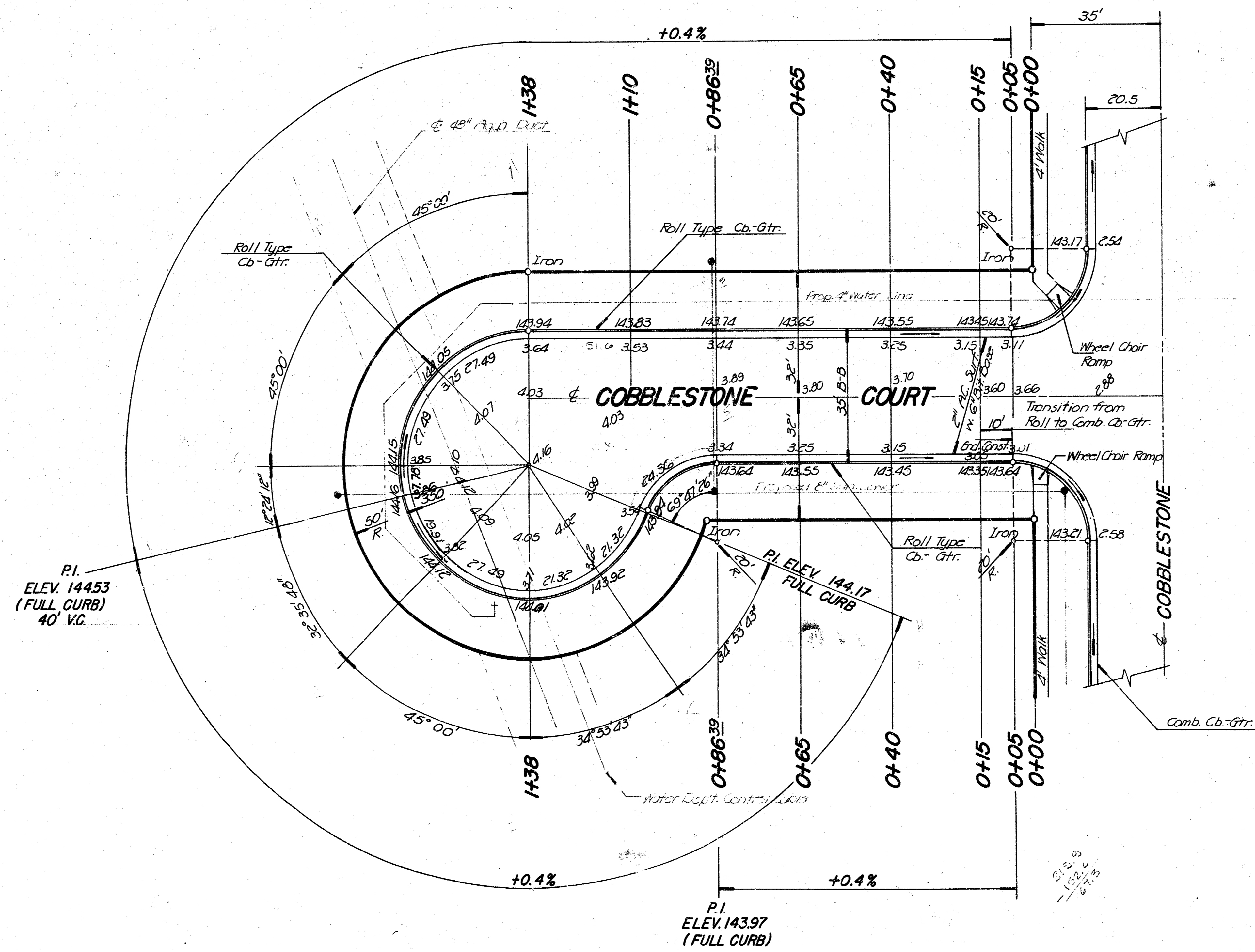


Const ditch W. side Meridian  
Keywest to Milro  
See Sheets 13 & 14



COBBLESTONE AND MILRO  
DAKS 577107 (7/12)

B.M. 141.07 "a" In S. Headwall, Culvert at 45th.  
St. N. and Meridian



**COBBLESTONE CT.**

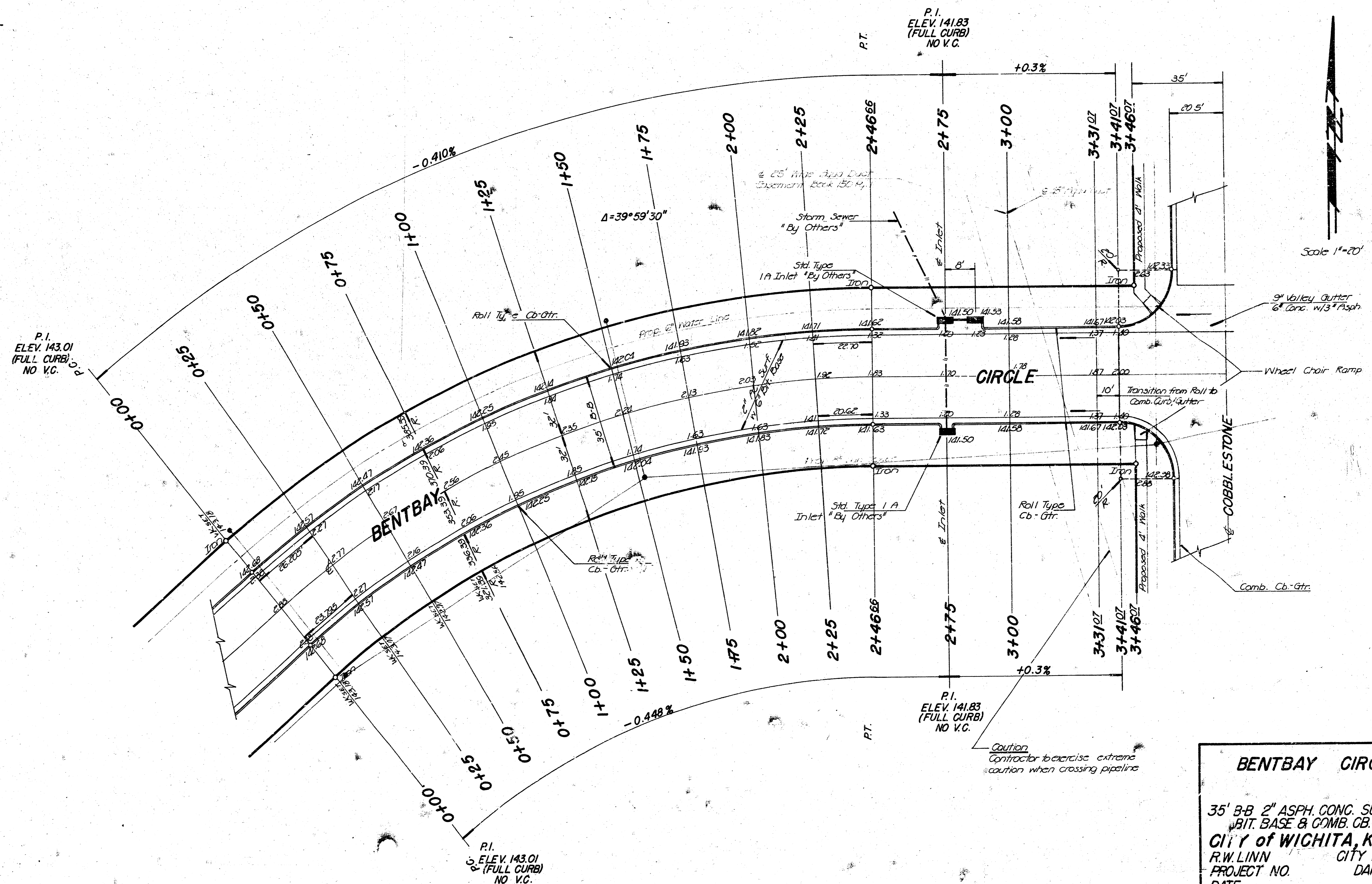
35' B-B 2" ASPH. CONC. SURF. w 6"  
BIT. BASE & COMB. CB. - GTR.  
CITY of WICHITA, KANSAS  
R.W. LINN CITY ENGINEER  
PROJECT NO. DAKS 577107  
DATE 8/15

B.M. 141.07 "C" In S. Headwall, Culvert at 45th.  
St. N. and Meridian

$\Delta = 39^{\circ}59'30''$  R. = 353.39' T. = 170.59' L. = 246.66' L.C. = 241.68'

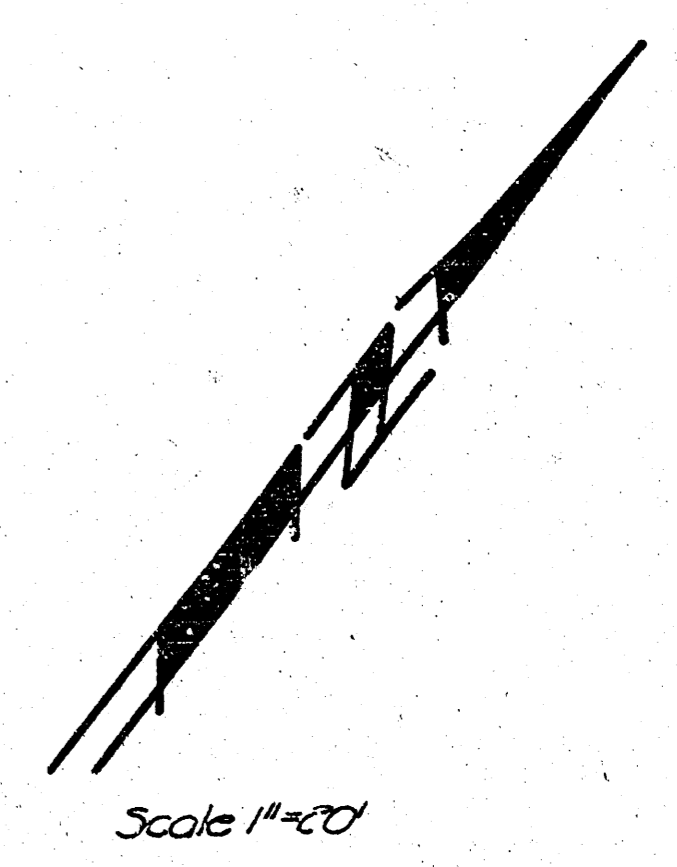
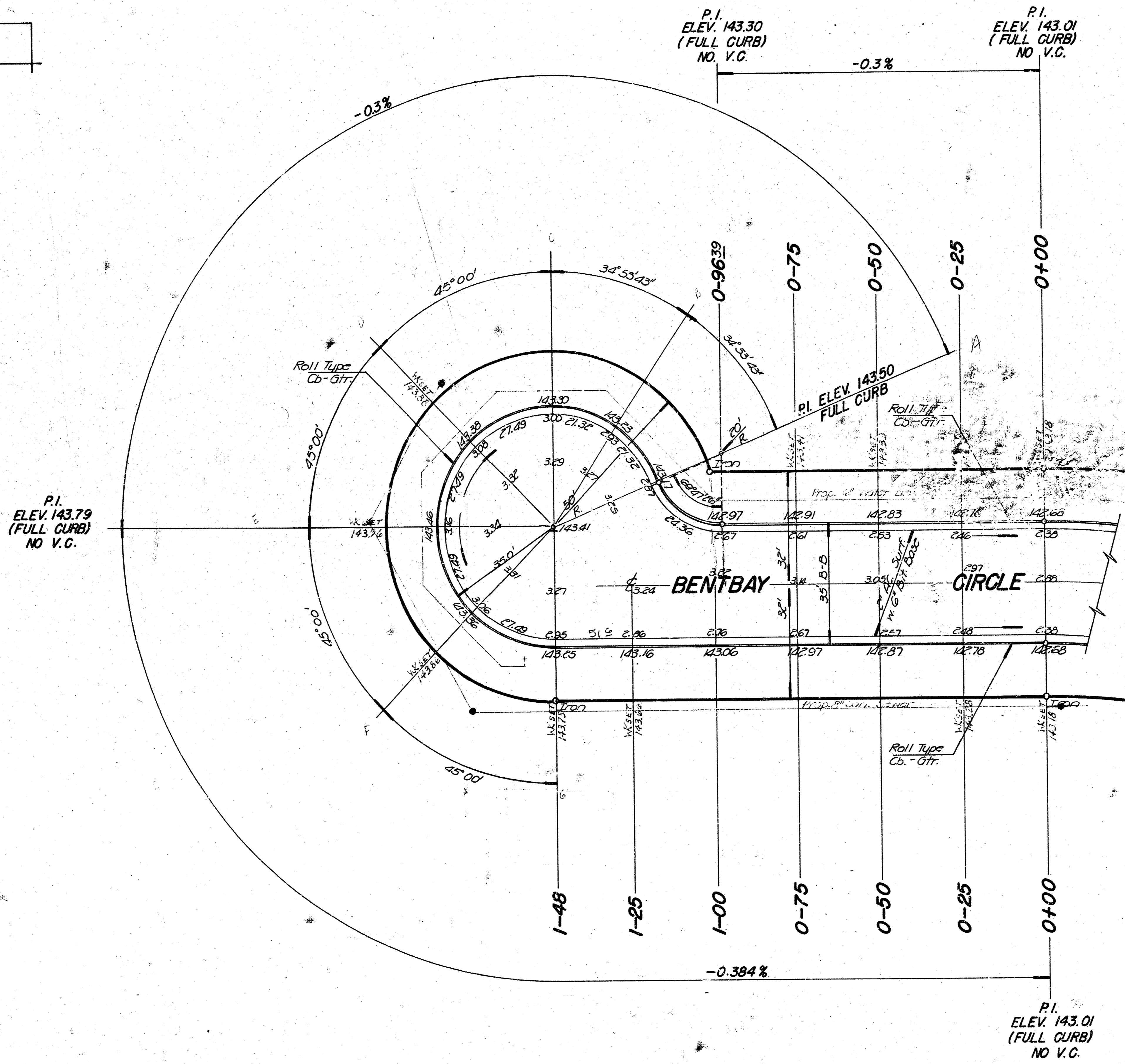
CURVE DATA BASED ON $\Delta$ RAD. $\Delta = 39^{\circ}59'30''$					
STA.	E. ARC.	CHORD LENGTH	DEFLECTION	TOTAL DEFLECTION	
		$\Delta$ OFF. L.C.B.	$\Delta$ OFF. R.C.B.		
0+00	—	—	—	—	—
0+25	25.00	26.80	23.19	2°01'36"	0°01'36"
0+50	25.00	26.80	23.19	2°01'36"	0°03'12"
0+75	25.00	26.80	23.19	2°01'36"	0°04'48"
1+00	25.00	26.80	23.19	2°01'36"	0°06'24"
1+25	25.00	26.80	23.19	2°01'36"	0°08'00"
1+50	25.00	26.80	23.19	2°01'36"	0°09'36"
1+75	25.00	26.80	23.19	2°01'36"	0°11'12"
2+00	25.00	26.80	23.19	2°01'36"	0°12'48"
2+25	25.00	26.80	23.19	2°01'36"	0°14'24"
2+46.66	27.66	23.22	20.09	1°45'27"	0°19'59'45"

Defl. / Ft. = 0.08106593213°



**BENTBAY CIRCLE**  
 35' B-B 2" ASPH. CONC. SURF. w. 6"  
 BIT. BASE & COMB. CB.-GTR.  
**CITY OF WICHITA, KANSAS**  
 R.W. LINN CITY ENGINEER  
 PROJECT NO. DAKS 577107  
 DATE 7/12

BM. 141.07 "□" In S. Headwall, Culvert at 45th.  
St. N. and Meridian



BENTBAY CIRCLE  
DAKS 577107

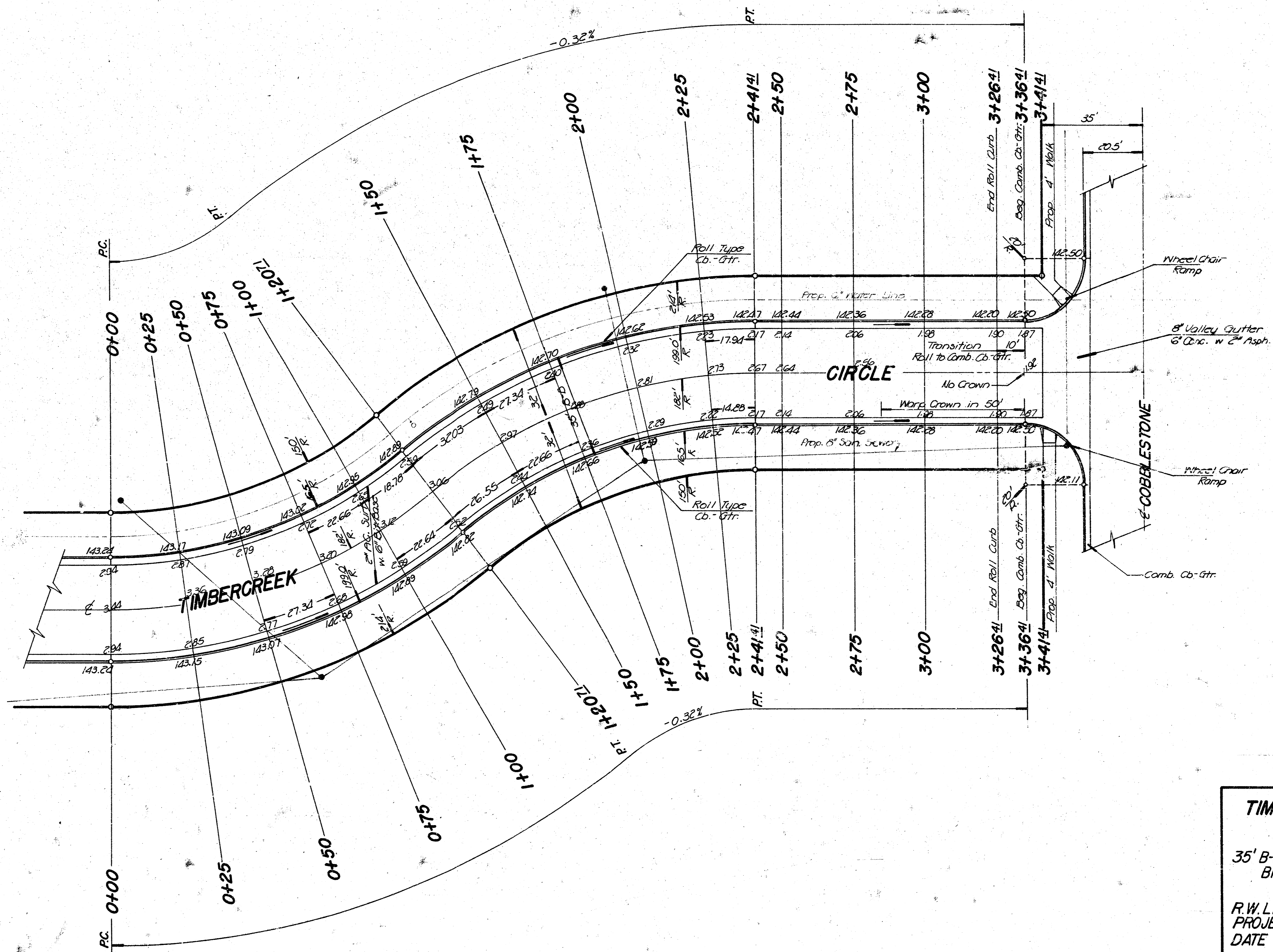
10/  
123

B.M. 141.07 "□" In S. Headwall, Culvert at 45th.  
St. N. and Meridian

$\Delta = 390000'' R = 182$   $T = 62.67$   $L = 120.71$   $L.C. = 118.51$

CURVE DATA BASED ON 180' RAD. $\Delta = 390000''$				
STA.	ARC.	CHORD LENGTH	DEFLECTION	TOTAL DEFLECTION
		$\Delta$ OFF L.C.B.	$\Delta$ OFF R.C.B.	
0+00	—	—	—	—
0+25	25.00	21.48	28.48	3° 56' 06"
0+50	25.00	21.48	28.48	3° 56' 06"
0+75	25.00	21.48	28.48	3° 56' 06"
1+00	25.00	21.48	28.48	3° 56' 06"
1+20.71	20.71	17.80	23.60	3° 15' 36"
1+20.71	—	—	—	—
1+50	29.29	33.36	25.16	4° 36' 38"
1+75	25.00	28.48	21.48	3° 56' 07"
2+00	25.00	28.48	21.48	3° 56' 07"
2+25	25.00	28.48	21.48	3° 56' 07"
2+41.41	16.41	18.70	14.11	2° 35' 01"

Defl. / Ft. = 0.15740598°



**TIMBERCREEK CIRCLE**

35' B-B 2" ASPH. CONC. SURF. w/ 6"  
BIT. BASE & COMB. CB-GTR.

R.W. LINN  
PROJECT NO.  
DATE

CITY ENGINEER  
DAKS 577107  
11/12

B.M. 141.07 "a" In S. Headwall, Culvert at 45th.  
St. N. and Meridian

P.I.  
ELEV. 14433  
54.98 V.C.  
(FULL CURB)

