

NORTHRIDGE LAKES

AN ADDITION TO WICHITA, SEDGWICK COUNTY, KANSAS

N.E. Corner N.W. 1/4
Sec. 4, T27S, R1W
of the 6th p.m.
Pd. 1/2 LP.

PROJECT NO.	SHEET NO.	TOTAL SHEETS
	2	6

SCALE: 1"=100'

○ = IRON SET
BSL = BUILDING SETBACK LINE
CAC = COMPLETE ACCESS CONTROL

B.M. - CITY OF WICHITA BENCH MARK DISC, 38 FEET WEST AND 90 FEET SOUTH OF THE INTERSECTION OF THE CENTERLINES OF TYLER ROAD AND 21ST STREET NORTH.
ELEV. 1357.349 M.S.L. = 169.949 CITY DATUM

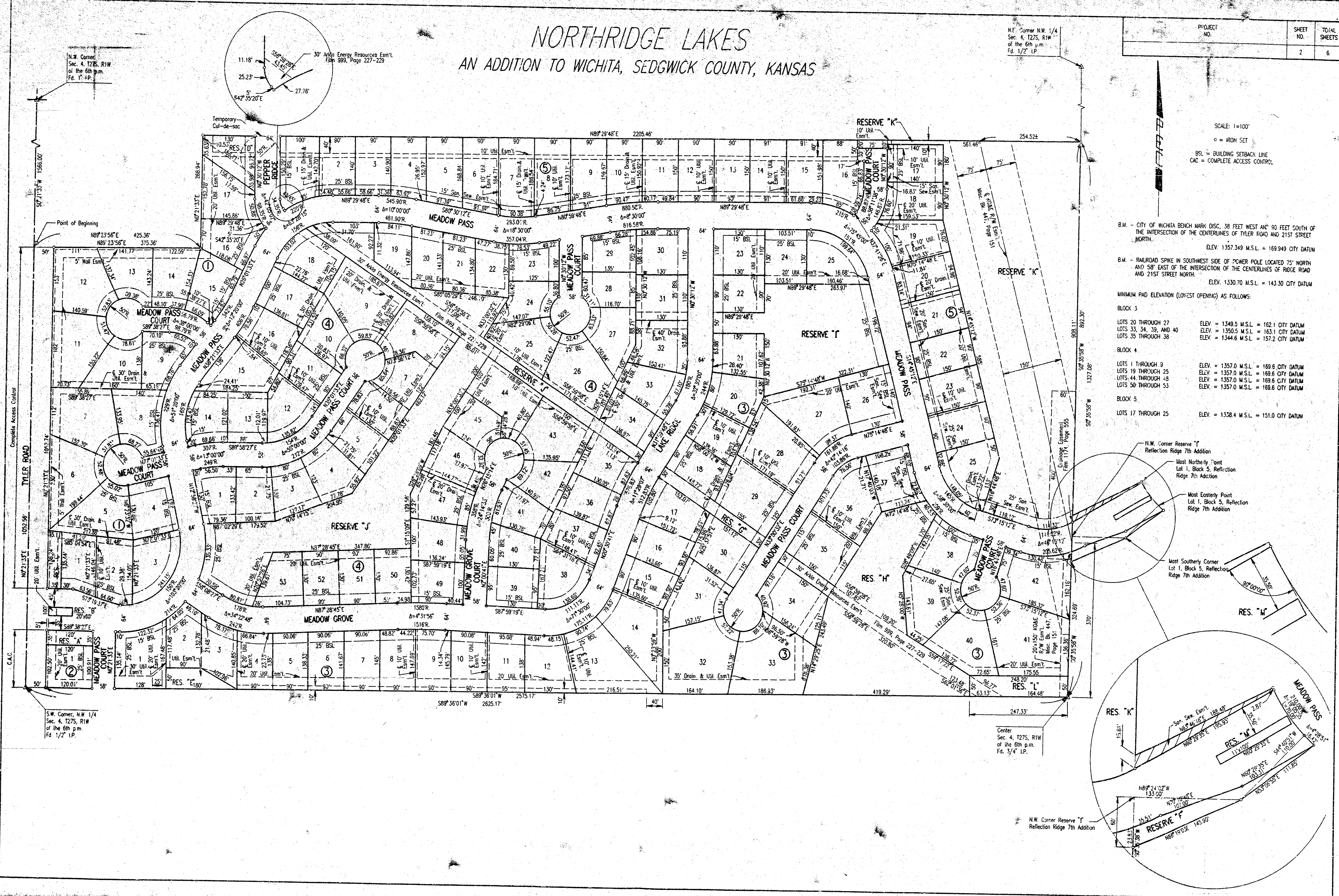
B.M. - RAILROAD SPIKE IN SOUTHWEST SIDE OF POWER POLE LOCATED 75' NORTH AND 58' EAST OF THE INTERSECTION OF THE CENTERLINES OF RIDGE ROAD AND 21ST STREET NORTH.
ELEV. 1330.70 M.S.L. = 143.30 CITY DATUM

MINIMUM PAD ELEVATION (LOWEST OPENING) AS FOLLOWS:

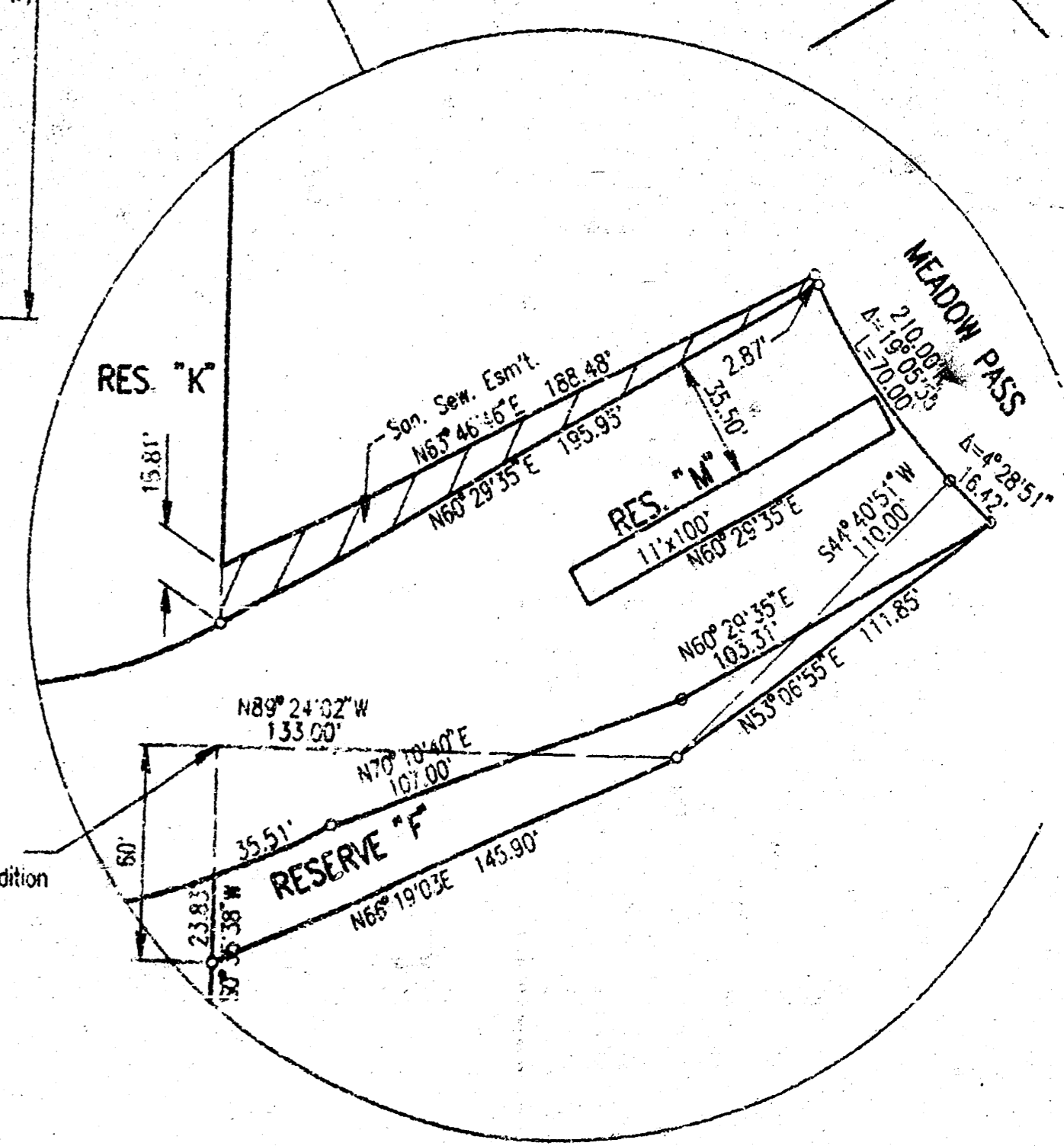
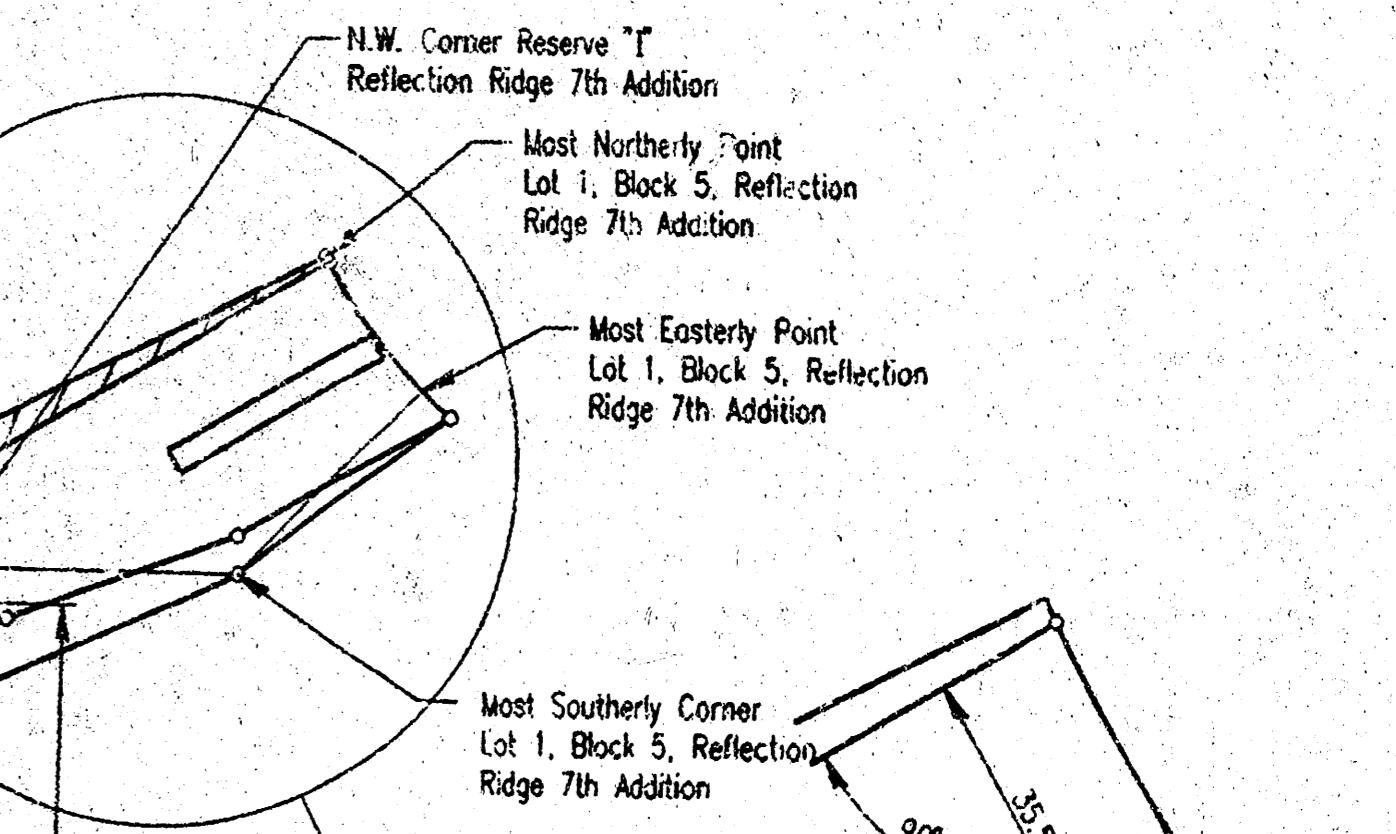
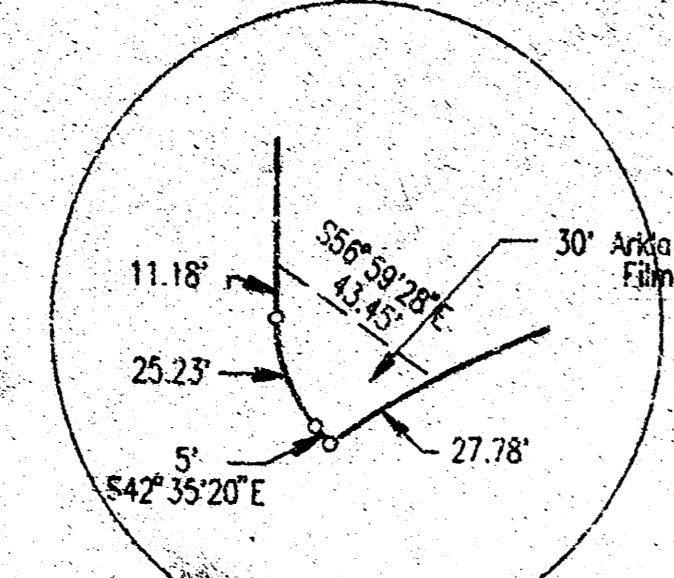
BLOCK 3
LOTS 20 THROUGH 27 ELEV. = 1349.5 M.S.L. = 162.1 CITY DATUM
LOTS 33, 34, 39, AND 40 ELEV. = 1350.5 M.S.L. = 163.1 CITY DATUM
LOTS 35 THROUGH 38 ELEV. = 1344.6 M.S.L. = 157.2 CITY DATUM

BLOCK 4
LOTS 1 THROUGH 9 ELEV. = 1357.0 M.S.L. = 169.6 CITY DATUM
LOTS 19 THROUGH 25 ELEV. = 1357.0 M.S.L. = 169.6 CITY DATUM
LOTS 44 THROUGH 48 ELEV. = 1357.0 M.S.L. = 169.6 CITY DATUM
LOTS 50 THROUGH 53 ELEV. = 1357.0 M.S.L. = 169.6 CITY DATUM

BLOCK 5
LOTS 17 THROUGH 25 ELEV. = 1338.4 M.S.L. = 151.0 CITY DATUM



N.W. Corner
Sec. 4, T27S, R1W
of the 6th p.m.
Pd. 1/2 LP.



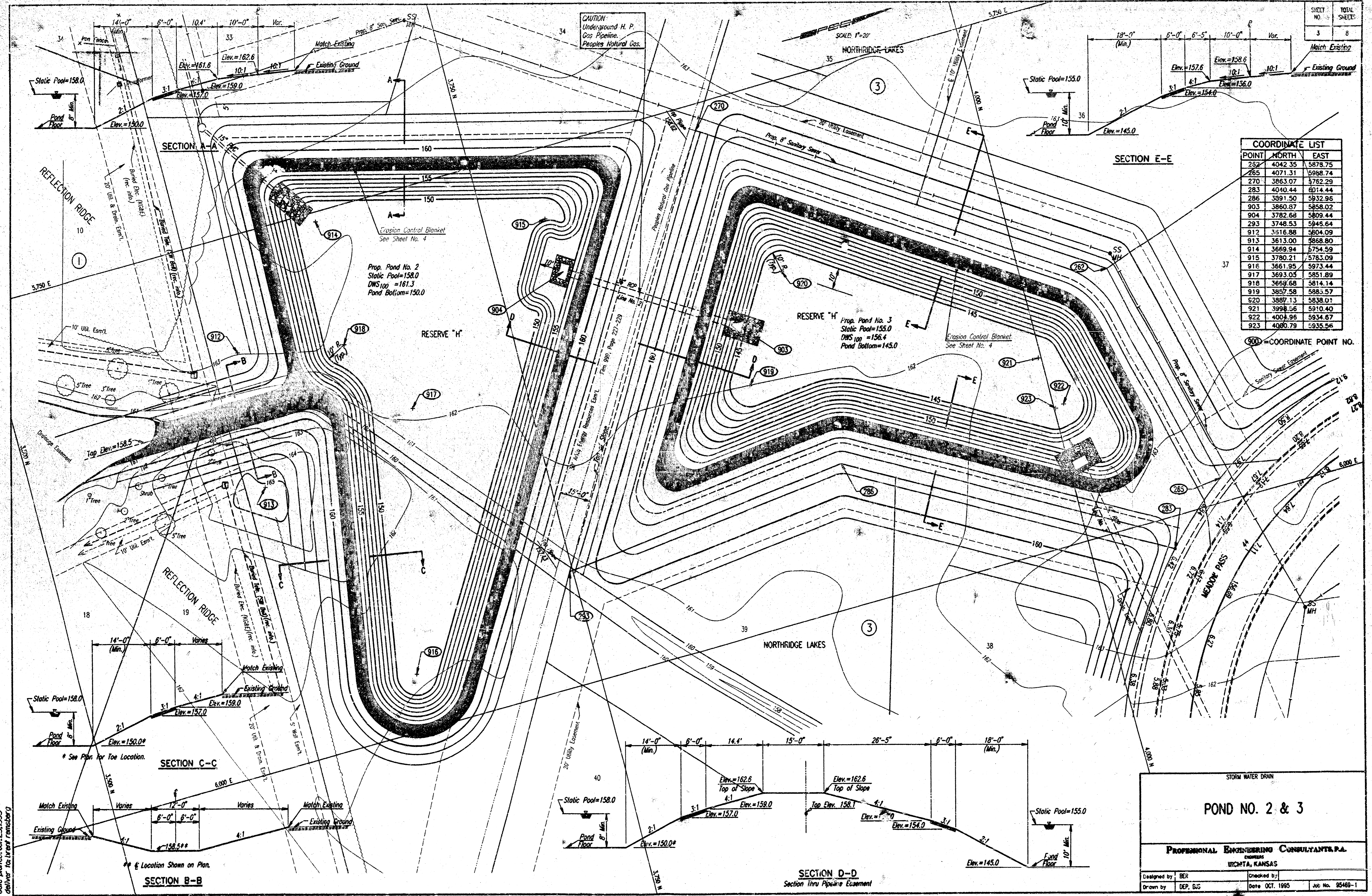
us7/ushv.dgm:12/95/95463/001/northridge.dgn
 date plotted: cd. 25.1995
 deliver to: brent rensberg

CAUTION
Underground H. P.
Gas Pipeline.
Peoples Natural Gas.

SHEET NO.	TOTAL SHEETS
3	8

POINT	NORTH	EAST
252	4042.35	5878.75
265	4071.31	5908.74
270	3863.07	5782.28
283	4040.44	6014.44
286	3991.50	5932.96
903	3860.87	5858.02
904	3782.68	5809.44
293	3748.53	5845.64
912	3516.88	5604.09
913	3613.00	5668.80
914	3669.94	5754.99
915	3780.21	5783.09
916	3661.95	5973.44
917	3693.05	5851.89
918	3669.68	5814.14
919	3857.58	5883.57
920	3887.13	5838.01
921	3998.56	5910.40
922	4004.96	5934.67
923	4000.79	5935.56

900=COORDINATE POINT NO.



STORM WATER DRAIN

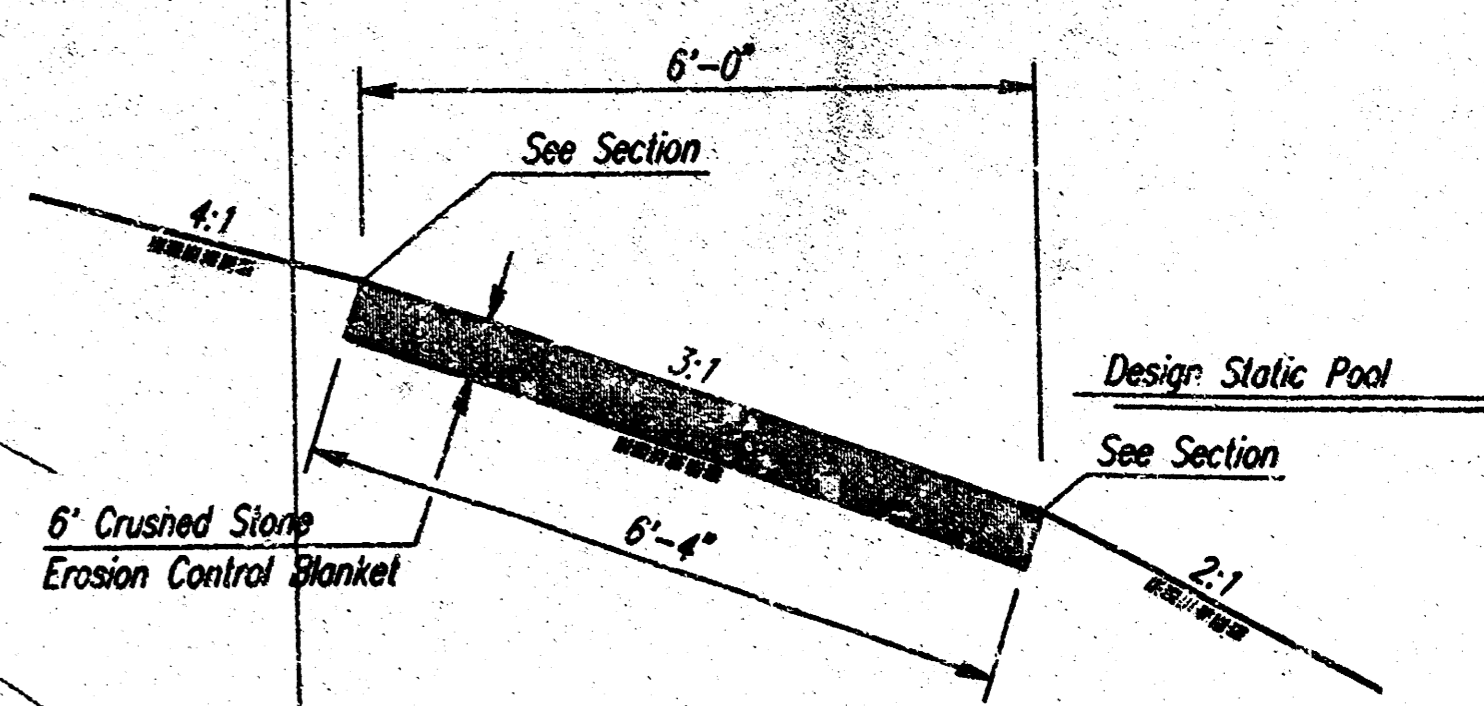
POND NO. 2 & 3

PROFESSIONAL ENGINEERING CONSULTANTS, P.A.
WICHITA, KANSAS

Designed by: BER
Drawn by: DEP, GUS
Date: OCT. 1995
Job No. 95469-1

USP/USTW/UGS 14995/95469/001/reshpond.dgn
date plotted: oct. 25, 1995
dwg. no. 14995/95469/001/reshpond.dgn

PROJECT NO.	SHEET NO.	TOTAL SHEETS
	4	8



EROSION CONTROL BLANKET DETAIL

NOTES

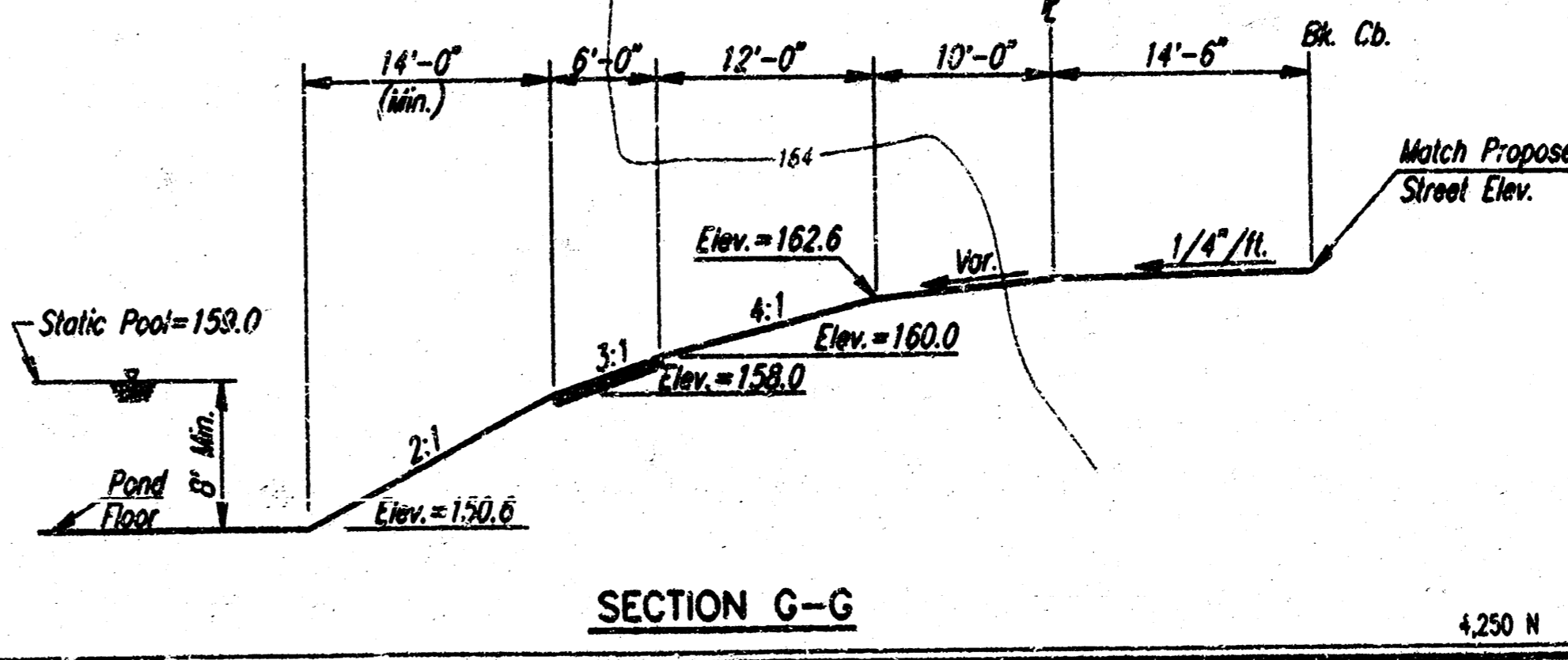
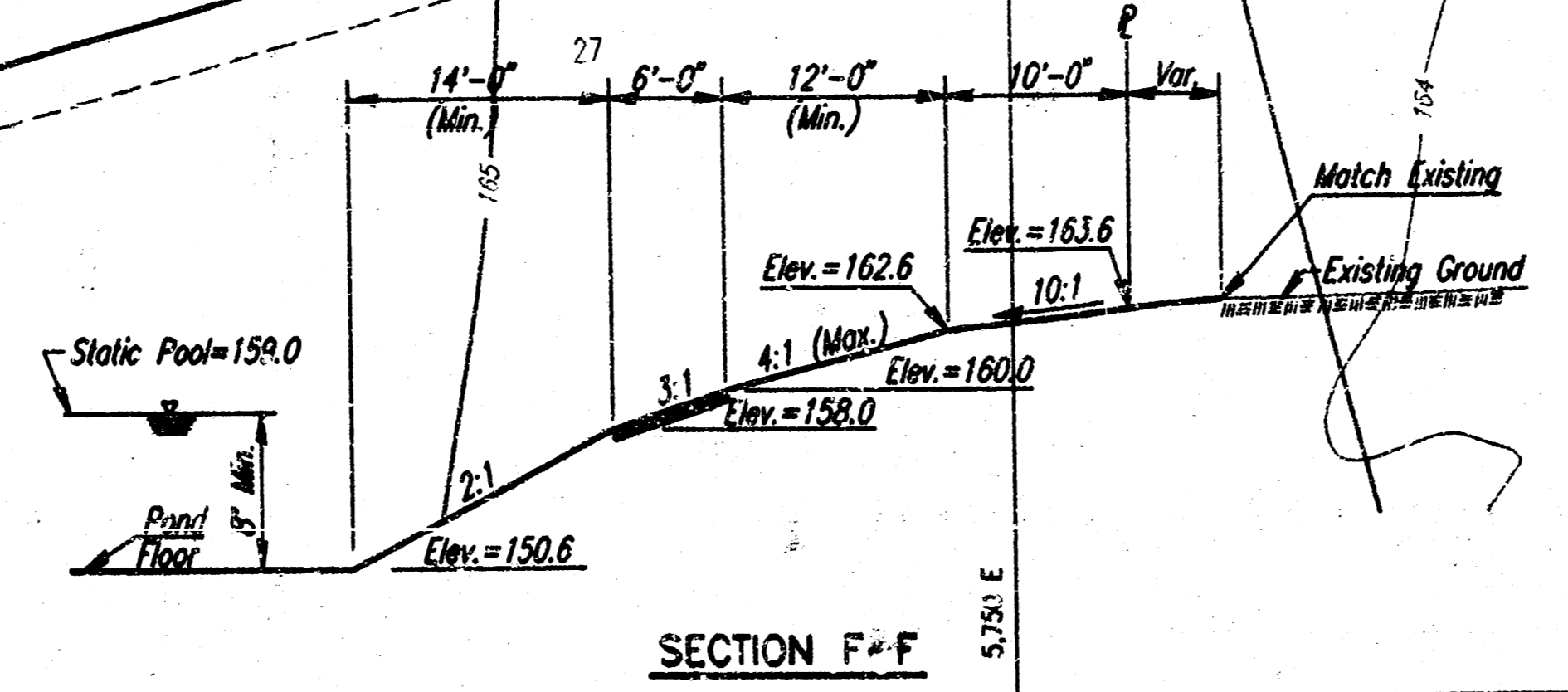
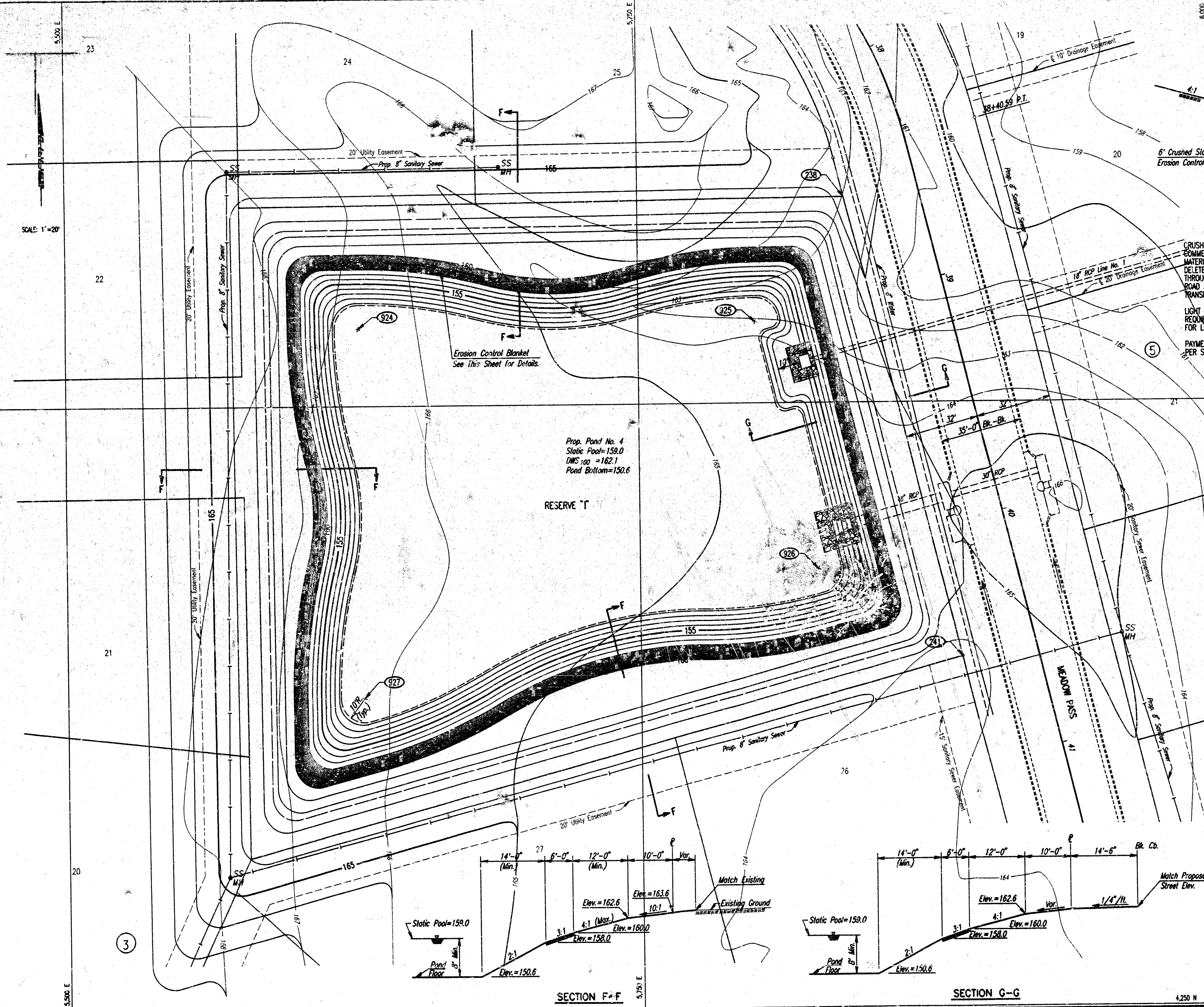
CRUSHED STONE FOR THE EROSION CONTROL BLANKET SHALL BE COMMERCIALY AVAILABLE 5" x 9" CRUSHED STONE FOR RIPRAP. MATERIALS SHALL MEET THE REQUIREMENTS FOR QUALITY AND DELETERIOUS SUBSTANCES AS SET FORTH IN SUBSECTION 1116.02 (d)(2) THROUGH 1116.02 (d)(3.1) OF STANDARD SPECIFICATIONS FOR STATE ROAD AND BRIDGE CONSTRUCTION, KANSAS DEPARTMENT OF TRANSPORTATION, 1990 EDITION.

LIGHT STONE RIPRAP SHALL BE NATURAL STONE MEETING THE REQUIREMENTS OF THE CITY OF WICHITA STANDARD SPECIFICATIONS FOR LIGHT STONE RIPRAP.

PAYMENT FOR 6" EROSION CONTROL BLANKET SHALL BE PER SQUARE YARD IN PLACE.

POINT	NORTH	EAST
238	4585.20	5846.41
241	4394.37	5890.51
924	4532.13	5628.08
925	4533.64	5801.03
926	4431.44	5827.95
927	4379.16	5628.43

900 = COORDINATE POINT NO.



usr/ustp/dgn/1995/05/469/001/res/pn4.dgn
 09/11/95 10:25:05
 001/13176 drant ramberg

NORTHDAKE LAKES
STORM WATER DRAIN

POND NO. 4

PROFESSIONAL ENGINEERING CONSULTANTS, P.A.
 WICHITA, KANSAS

Designed by: BEP	Checked by:
Drawn by: DEP, BUS	Date: SEPT, 1995
	Job No. 05469-1

PROJECT NO.	SHEET NO.	TOTAL SHEETS
	5	8

SCALE: 1"=20'

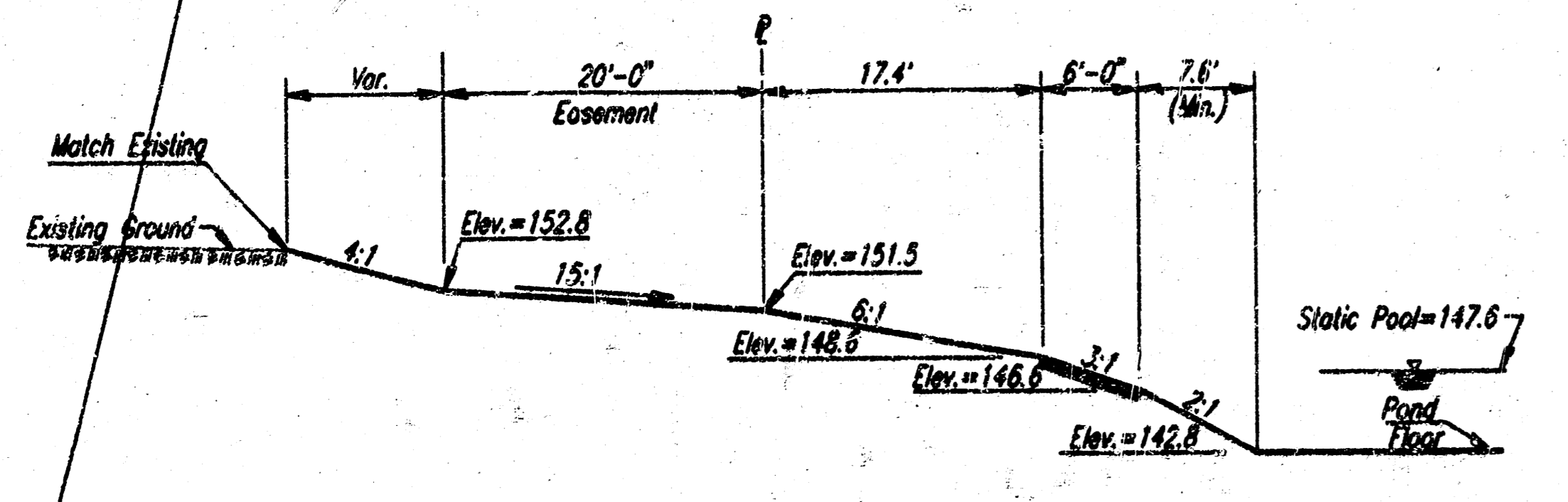
RESERVE "K"

W.S. Elev.=147.10

Erosion Control Blanket
See Sheet No. 4

Match Existing

Existing Ground



SECTION J-J
Between Lot 19 & 21

NORTHBRIDGE LAKES
STORM WATER DRAIN

POND NO 5
● SWS LINE NO. 1 OUTLET

PROFESSIONAL ENGINEERING CONSULTANTS, P.A.
WICHITA, KANSAS

Designed by	BER	Checked by	
Drawn by	BJS	Date	OCT. 1995
		Job No.	95469-2

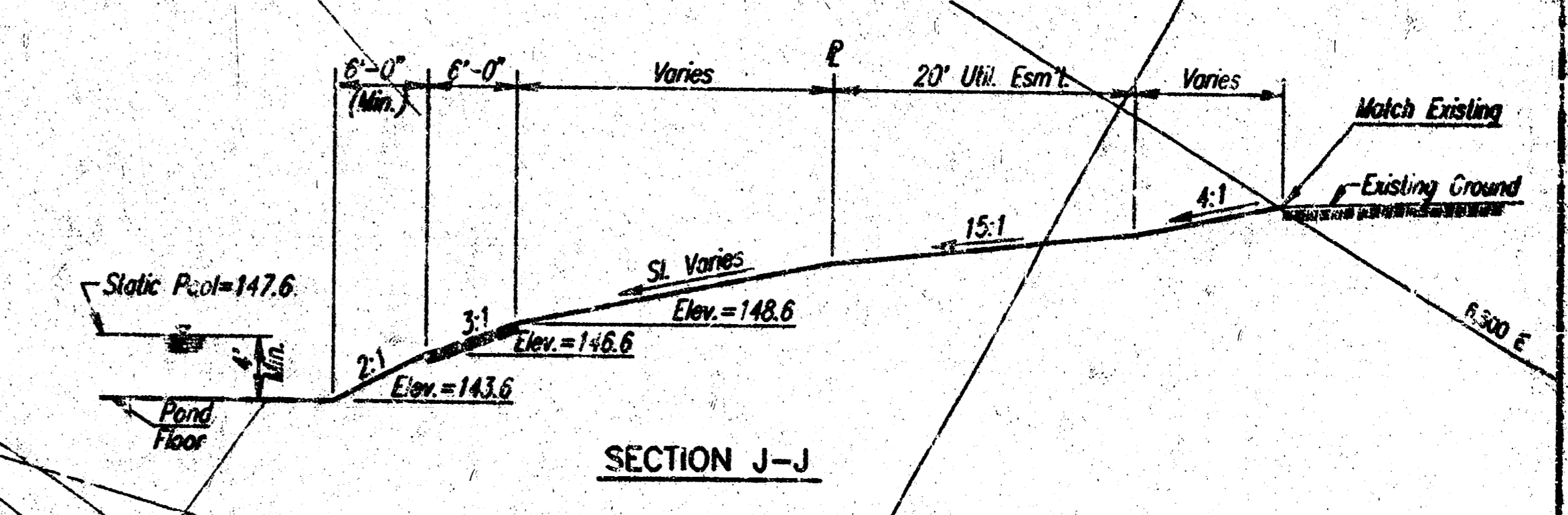
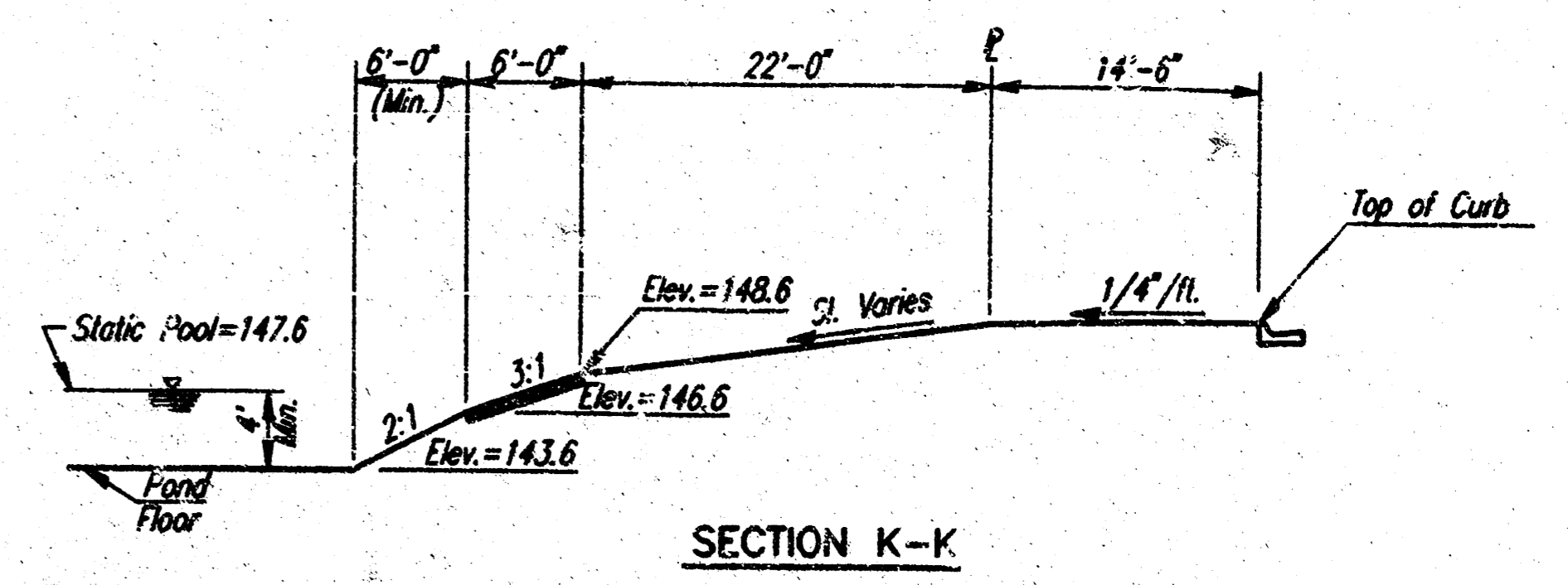
user: ush/algm: 10/95: 95-469/001/pand.dgn
 date plotted: oct. 25, 1995
 author: the grant reinisberg

PROJECT NO.	SHEET NO.	TOTAL SHEETS
	6	8

SCALE: 1"=20'

REFLECTION RIDGE
7TH ADDITION

RESERVE I
REFLECTION RIDGE
7TH ADDITION



SECTION J-J

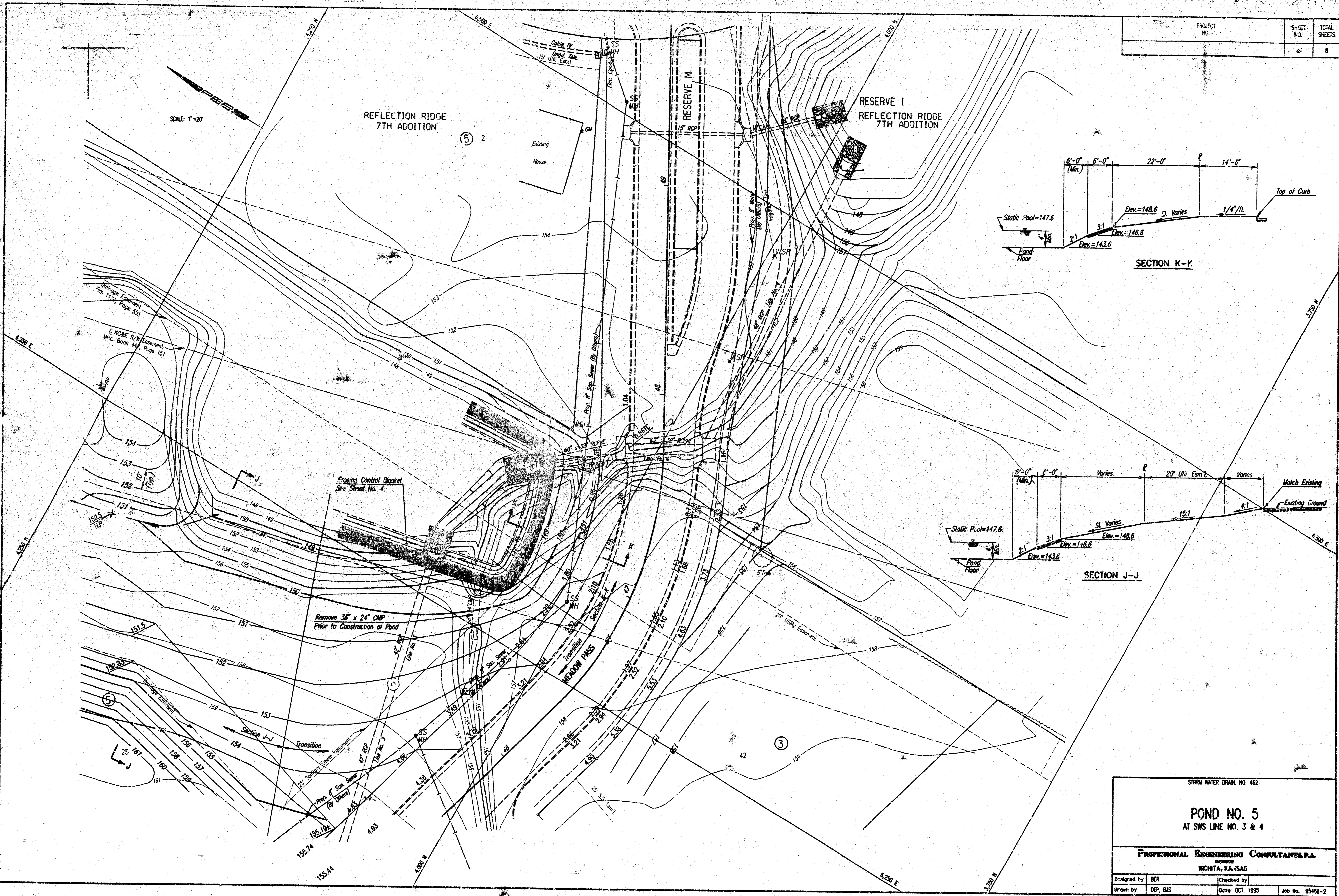
STORM WATER DRAIN, NO. 462

POND NO. 5
AT SWS LINE NO. 3 & 4

PROFESSIONAL ENGINEERING CONSULTANTS, P.A.
WICHITA, KANSAS

Designed by	BER	Checked by	
Drawn by	DEP, BJS	Date	OCT. 1995
		Job No.	95469-2

usr:\ustw\sign\1995-95-469\001\res.pond.dgn
date plotted: oct. 25, 1995
author: bob brent remsberg



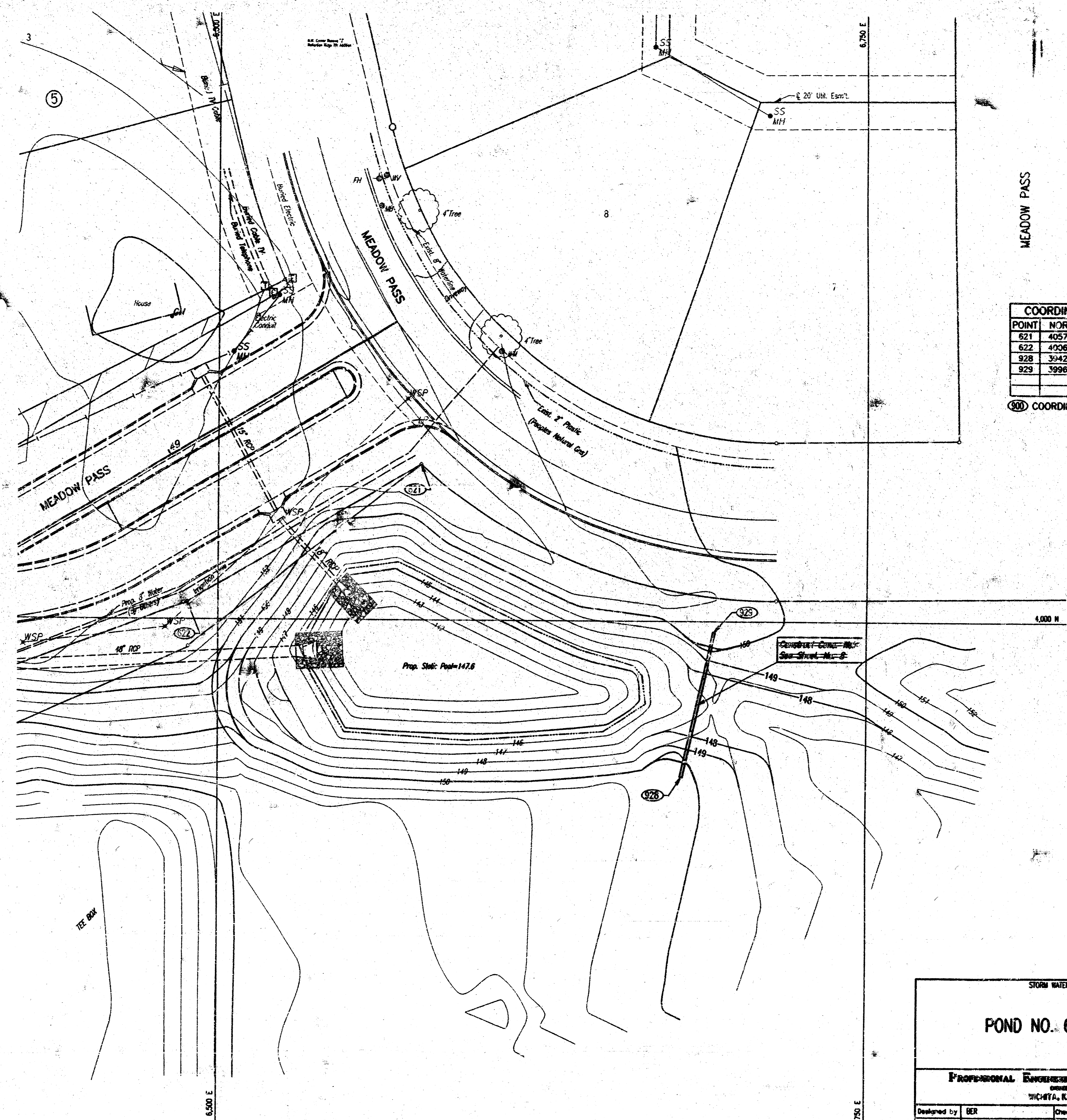
SHEET NO.	TOTAL SHEETS
7	8

MEADOW PASS

SCALE 1"=20'

COORDINATE LIST		
POINT	NORTH	EAST
521	4057.23	6578.10
522	4006.34	6498.19
928	3942.52	6679.12
929	3996.02	6391.68

Ⓢ COORDINATE POINT NO.



STORM WATER DRAIN

POND NO. 6 OUTFALL

PROFESSIONAL ENGINEERING CONSULTANTS, P.A.
INCORPORATED
 WICHITA, KANSAS

Designed by	BER	Checked by	
Drawn by	BJS	Date	OCT. 1995
		Job No.	95409-2

usr:\astro\pdp\1995\95-469\001\pondw6r.dgn
 date plotted: oct. 25, 1995
 deliver to: b. j. romberg