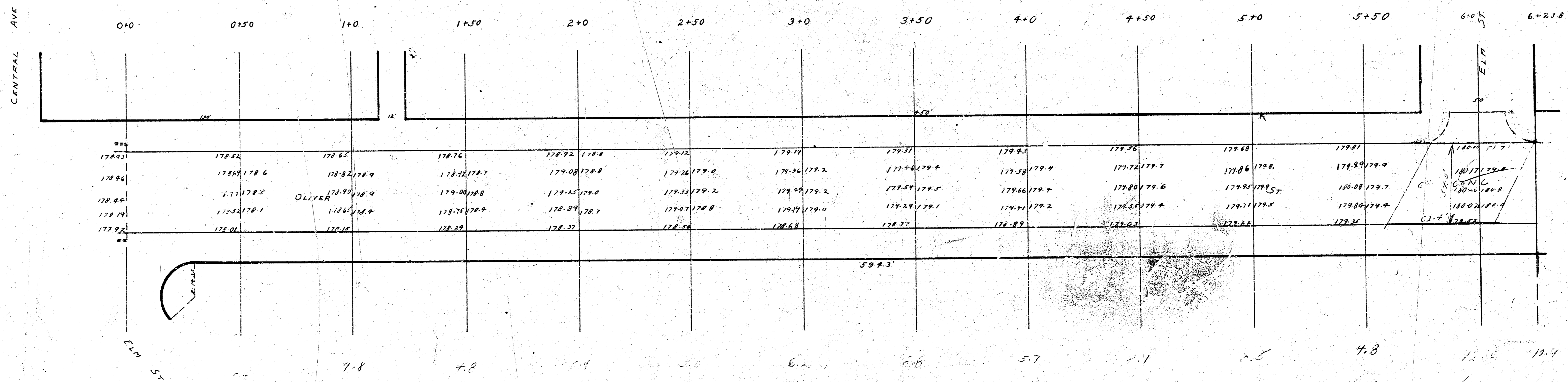
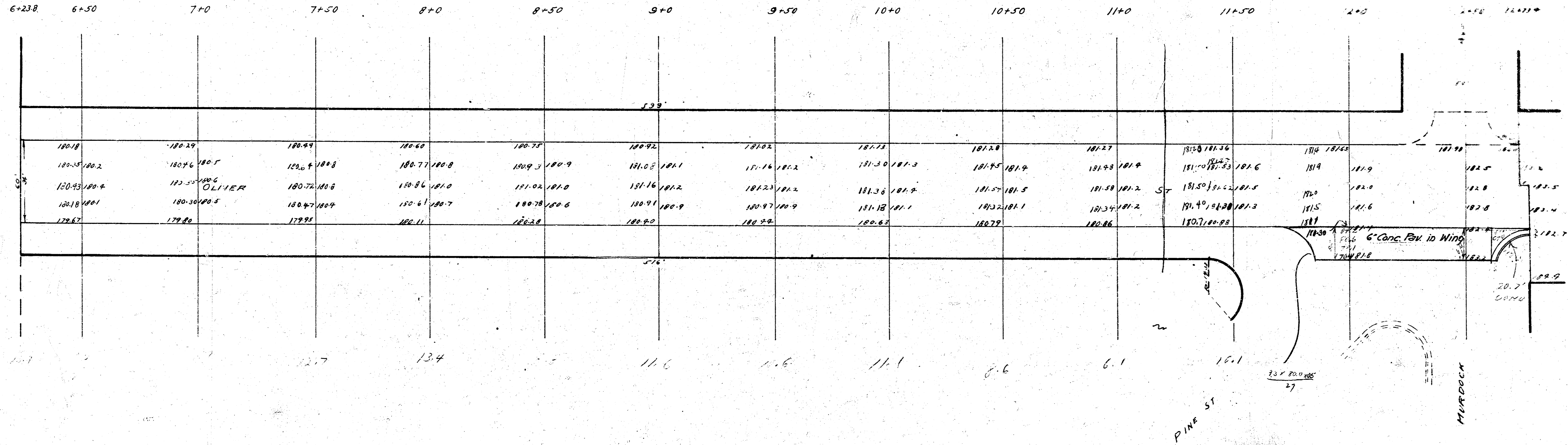


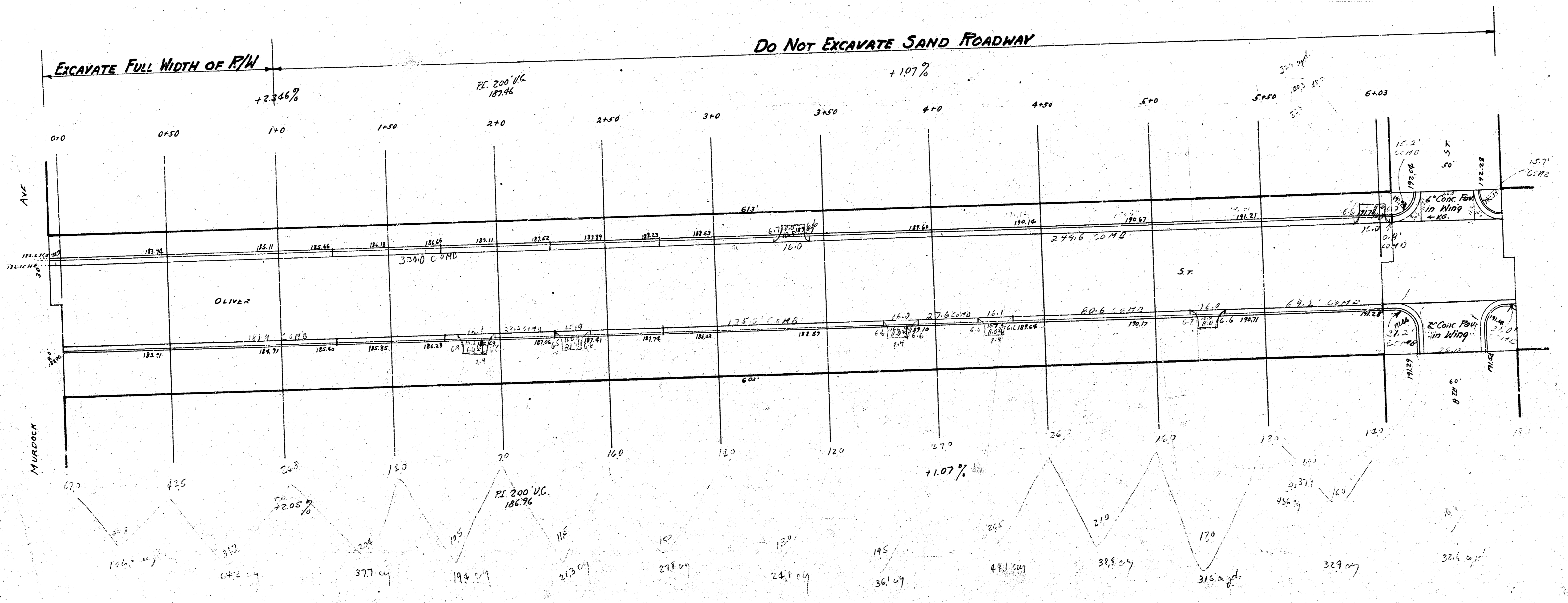
1942
 OLIVER ST. - N.L. CENTRAL TO S.L. 9TH
 34' ASPHALT MAT - CENTRAL TO MURDOCK
 36'-2-40 - 4" ASPHALT MAT - MURDOCK TO 9TH



ELM ST



B.M. 183.67 'L' IN LUDLOW FIRE HYDRANT, S.E. COR. OLIVER + MURDOCK.



B.M. 180.75 IRON S.L. E.H.N. ADDY, W.L. HARDING
 817. 197.10 NW cor Int. etc on NW cor. Oliver & 9th

