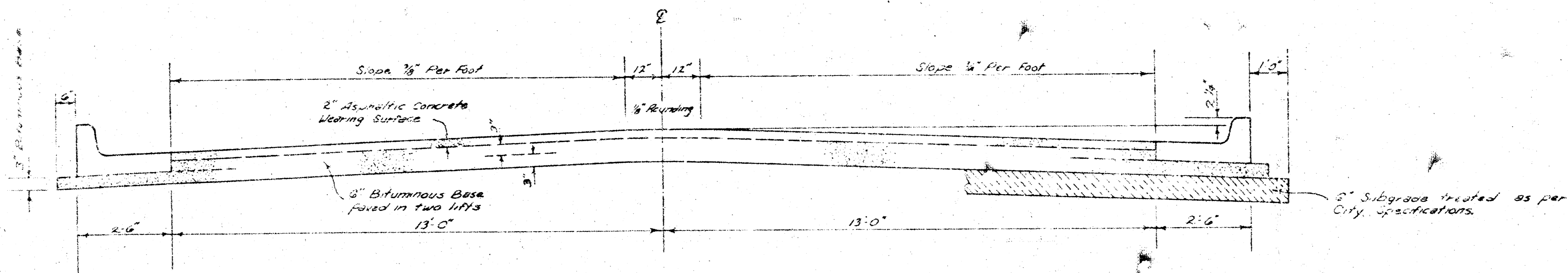


**MORGANTOWN AVENUE**  
**E.L. NORTHWEST PARKWAY to the W.L. RIDGE ROAD**  
**Proj. No. DAKS 576003**



**TYPICAL SECTION**

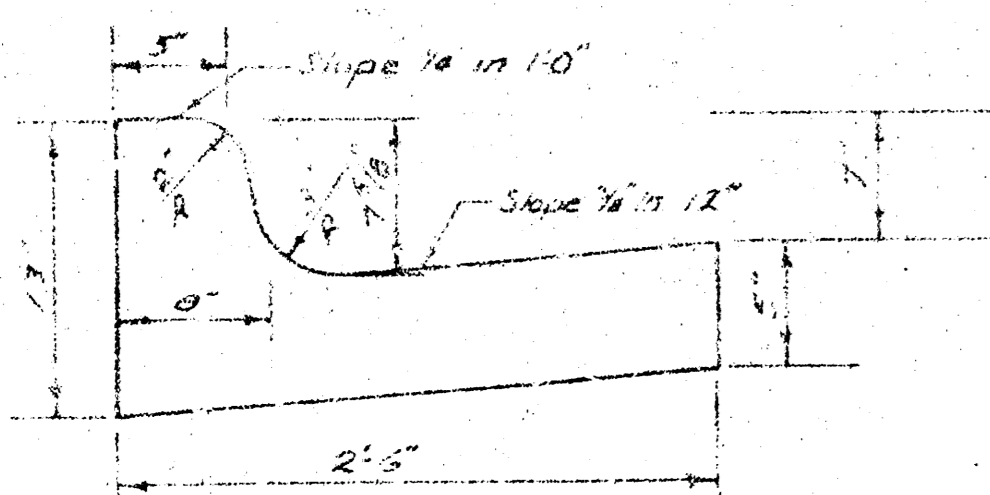
**3' ASPHALTIC CONCRETE PAVEMENT WITH BITUMINOUS BASE**

A TACK COAT OF EMULSIFIED ASPHALT (SS-1H) SHALL BE APPLIED AT AN APPROXIMATE RATE OF 0.05 GALLONS PER SQ. YD. BETWEEN LIFTS OF ASPHALTIC MATERIALS WHEN ORDERED BY THE ENGINEER. TACK COAT WILL NOT BE PAID FOR DIRECTLY AND SHALL BE CONSIDERED AS SUBSIDIARY TO PRICE BID FOR ASPHALTIC PAVEMENT.

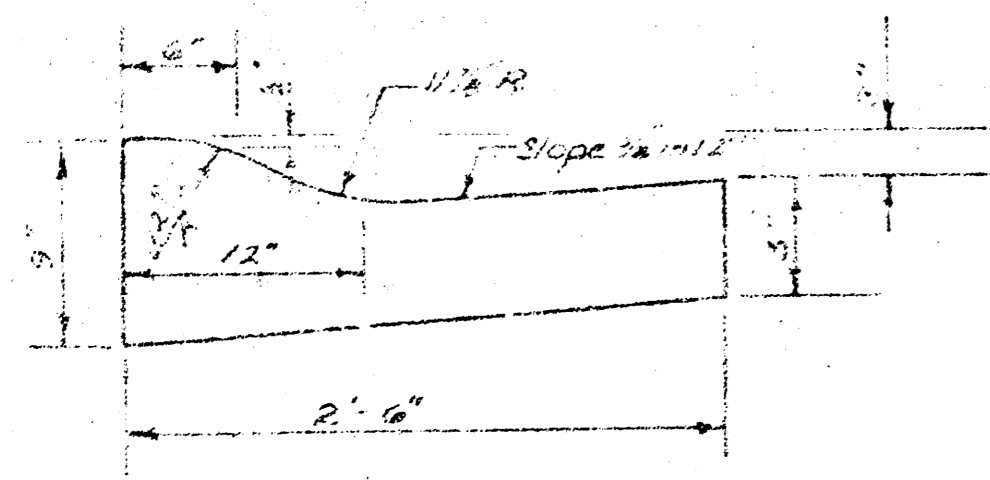
BITUMINOUS BASE AND ASPHALTIC CONCRETE WEARING SURFACE SHALL BE PLACED WITH A LAYDOWN MACHINE HAVING AUTOMATIC ELECTRONIC CONTROLS FOR CROWN AND GRADE. CONSTRUCTION JOINTS IN EACH LIFT SHALL BE STAGGERED A MINIMUM DISTANCE OF 1' WITH JOINTS IN PRECEDING LIFTS AND SUCH THAT A JOINT WILL BE CONSTRUCTED ON THE PAVEMENT CENTERLINE IN THE TOP LIFT.

*The A.C. pavement between the curb & gutter shall be paid as 3a.16a. 8" A.C. Pavement (w/ Bituminous Base). The Bituminous Base under the curb & gutter shall be paid as 3a.16a. 3" Bituminous Base.*

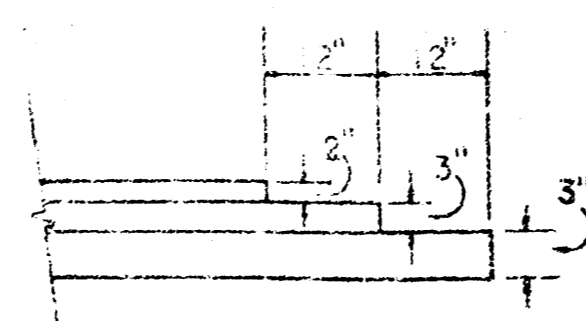
COMBINED CURB & GUTTER



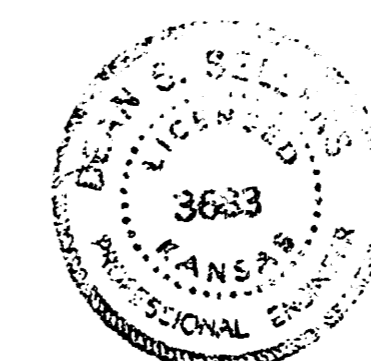
ROLL TYPE CURB & GUTTER



**DETAIL OF TRANSVERSE CONSTRUCTION JOINTS**



TRANSVERSE CONSTRUCTION JOINTS SHALL BE CONSTRUCTED IN FLEXIBLE BASE PAVEMENTS AT LOCATIONS AND AT PAVEMENT TERMINAL ENDS TO FACILITATE FUTURE PAVEMENT CONSTRUCTION AS SHOWN BY DETAIL. THE COST OF CONSTRUCTING THE TRANSVERSE CONSTRUCTION JOINTS SHALL NOT BE MEASURED OR PAID FOR DIRECTLY BUT SHALL BE INCLUDED IN THE BID PRICE FOR SQUARE YARDS OF ASPHALTIC CONCRETE PAVEMENT.



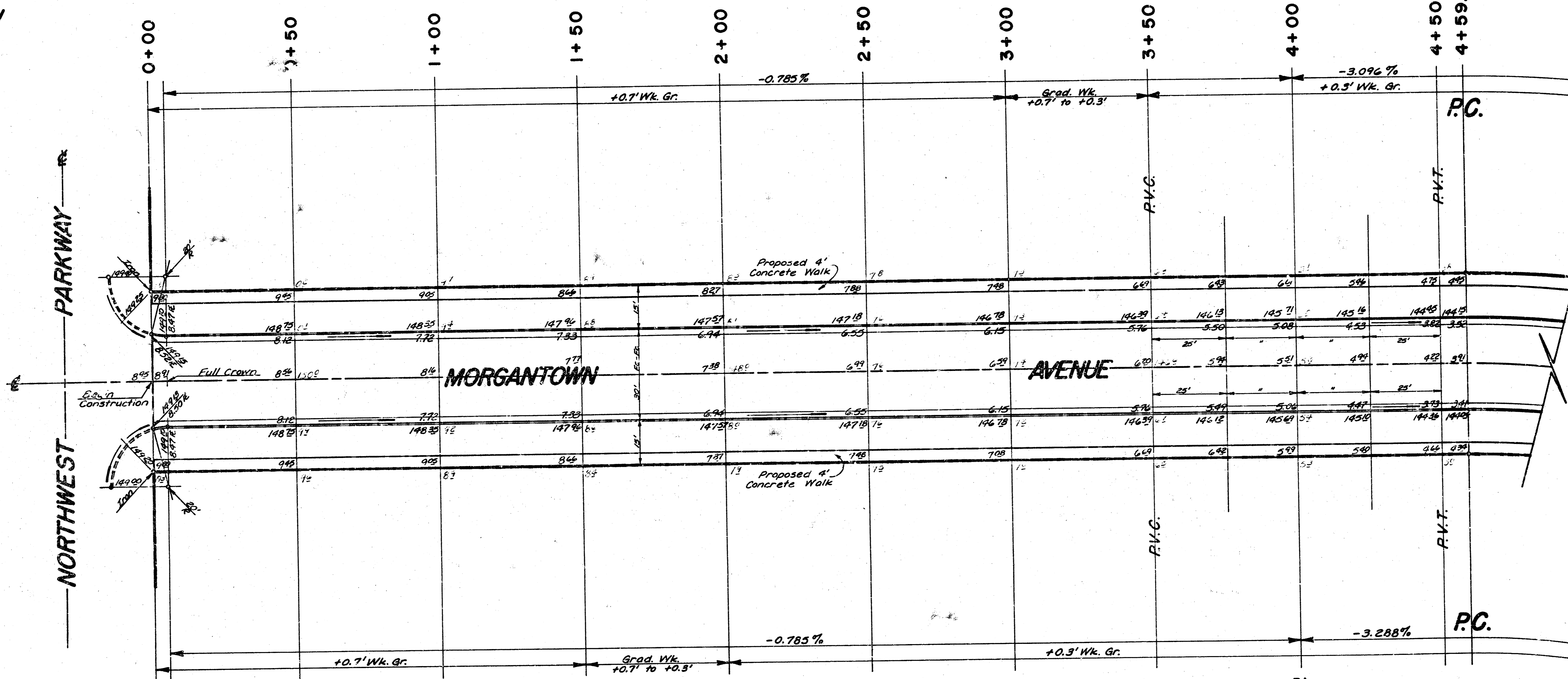
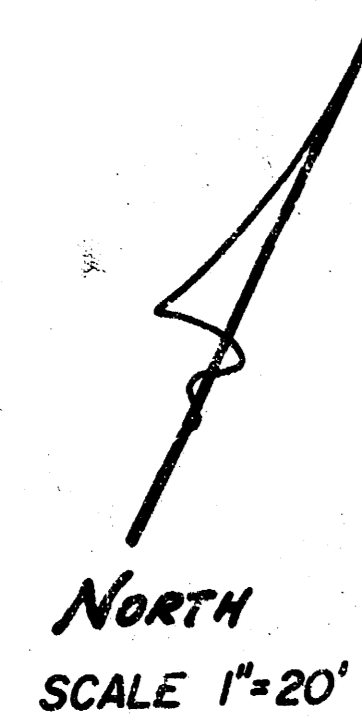
**CITY OF WICHITA, KANSAS**  
 DEPARTMENT OF PUBLIC WORKS — ENGINEERING  
 R. W. LINN CITY ENGINEER  
 DATE: June, 1976 PROJ. NO. DAKS576003

**FILMED FROM THE BEST AVAILABLE COPY.....**

B-M

B.M. = 151.47 S. Bolt Head, S. Side Fire Hydrant Top Flange, S.W. Cor. Morgantown & Northwest Pkwy.

Q is Q Morgantown



NOTE TO FIELD ENGINEER & CONTRACTOR  
Grade parking and clear right-of-way for proposed sidewalk. Compact fill in sidewalk area. TO BE CONSTRUCTED BY "OTHERS".

SUB-GRADE  
TYPE OF SUB-GRADE TREATMENT SHALL BE DETERMINED BY THE FIELD ENGINEER. SUB-GRADE TREATMENT MAY CONSIST OF LIME TREATMENT, CEMENT TREATMENT, SUB-GRADE MODIFICATION, OR ANY COMBINATION OF THESE.

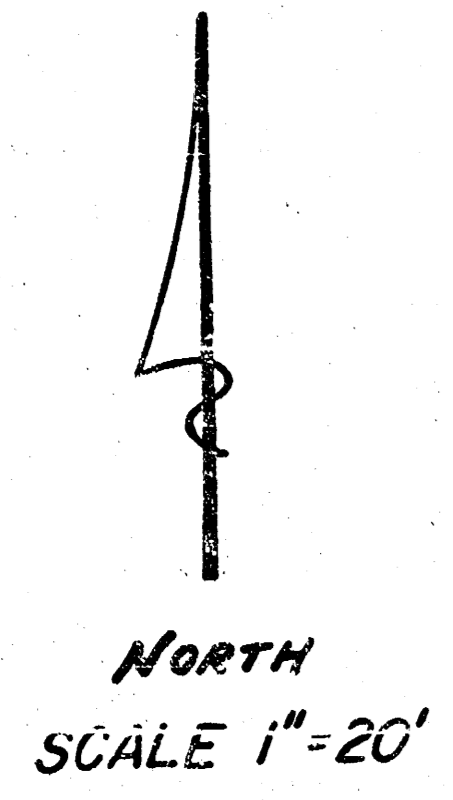
EARTHWORK:		
	Prop.	City.
Excavation	910.2 C.Y.	39.5 C.Y.
+10%	91.0 C.Y.	4.0 C.Y.
Total	1001.2 C.Y.	43.5 C.Y.
Comp. Fill	289.6 C.Y.	43.2 C.Y.
+10%	29.0 C.Y.	4.9 C.Y.
Total	318.6 C.Y.	47.5 C.Y.
Manipulation = 3223.6 S.Y.		

P.I.  
100' V.C.  
Elev. 146.00

**MORGANTOWN AVE.**  
E.L. Northwest Pkwy.-W. L. Ridge Rd.  
(31' B-B 8" A.C. Pavt. w/ Comb. C.&G.)  
**CITY OF WICHITA, KANSAS**  
R.W. Linn — City Engineer  
Proj. No. DAKS576003  
Date June, 1976

DUNEY, Dallas DCD-28  
 Pugh, Henry  
 Oak, Henry  
 Cheeser

(6/5)

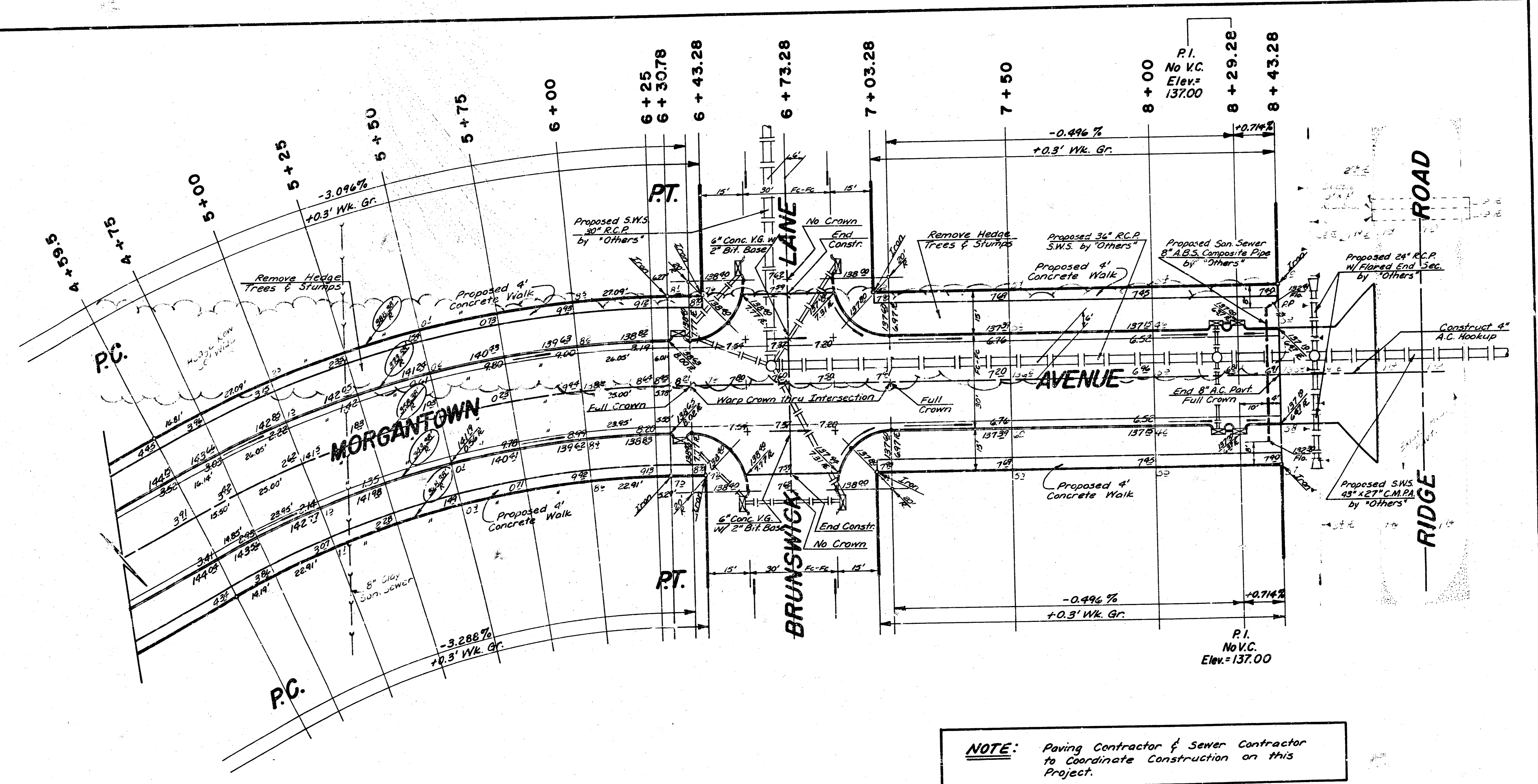


27°23'R. 358.38'T. 87.31' L. = 171.28' LC. = 169.65'

CURVE DATA BASED ON  $\frac{1}{2}$  RAD.  $13^{\circ}41'30''$

STA.	ARC.	CHORD LENGTH		DEFLECTION	
		Δ' OFF C.C.S.	Δ' OFF P.C.S.	DEFLECTION	TOTAL DEFLECTION
4+59.50				0°00'00"	0°00'00"
4+75	15.50'	16.49'	14.50'	1°14'20"	1°14'20"
3+00	25.00'	26.60'	23.39'	1°59'55"	3°14'15"
5+25	"	"	"	1°59'54"	5°14'09"
5+50	"	"	"	1°59'55"	7°14'04"
5+75	"	"	"	1°59'54"	9°13'58"
6+00	"	"	"	1°59'54"	11°13'52"
6+25	25.00'	26.60'	23.39'	1°59'55"	13°13'47"
6+30.78	5.78'	6.15'	5.41'	0°27'43"	13°21'30"

Defl. = 4.7962314 Mn/H.



**NOTE:** Paving Contractor & Sewer Contractor to Coordinate Construction on this Project.

- = Proposed Curb Inlet by "Others"
- = Proposed Manhole by "Others"