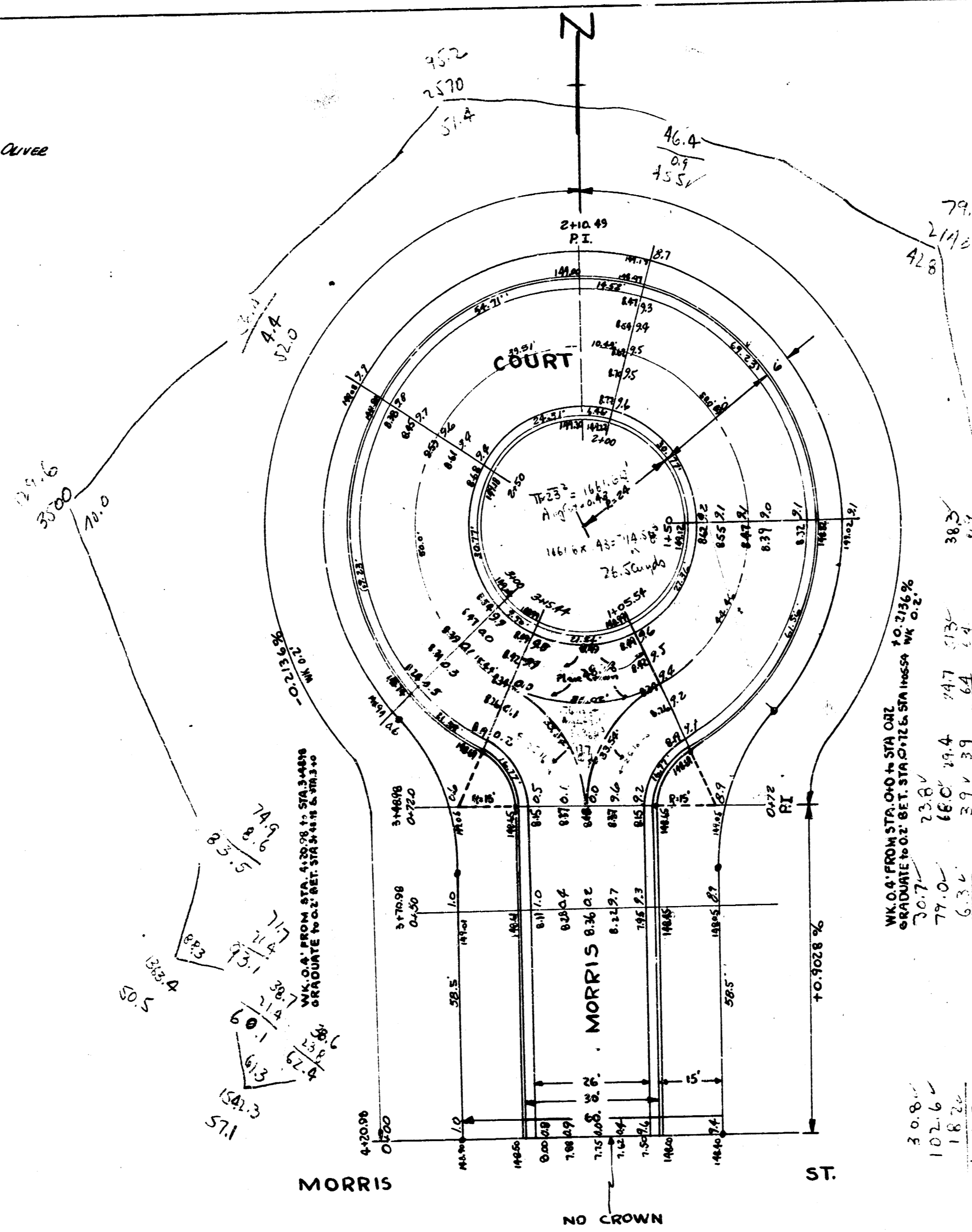


B.M. 154.93 "G" in Corner J. G. Gilbert W.L. Curve  
 Note: Stationing is on E

Field
57.1
58.5
59.6
60.2
61.3
62.9
64.0
66.5
67.8
68.5
69.7
70.9
72.0
73.3
74.9
76.0
77.5
78.8
80.0
81.7
82.9
84.3
85.7
87.1
88.5
89.9
91.3
92.7
94.1
95.5
96.9
98.3
99.7
101.1
102.5
103.9
105.3
106.7
108.1
109.5
110.9
112.3
113.7
115.1
116.5
117.9
119.3
120.7
122.1
123.5
124.9
126.3
127.7
129.1
130.5
131.9
133.3
134.7
136.1
137.5
138.9
140.3
141.7
143.1
144.5
145.9
147.3
148.7
150.1
151.5
152.9
154.3
155.7
157.1
158.5
159.9
161.3
162.7
164.1
165.5
166.9
168.3
169.7
171.1
172.5
173.9
175.3
176.7
178.1
179.5
180.9
182.3
183.7
185.1
186.5
187.9
189.3
190.7
192.1
193.5
194.9
196.3
197.7
199.1
200.5
201.9
203.3
204.7
206.1
207.5
208.9
210.3
211.7
213.1
214.5
215.9
217.3
218.7
220.1
221.5
222.9
224.3
225.7
227.1
228.5
229.9
231.3
232.7
234.1
235.5
236.9
238.3
239.7
241.1
242.5
243.9
245.3
246.7
248.1
249.5
250.9
252.3
253.7
255.1
256.5
257.9
259.3
260.7
262.1
263.5
264.9
266.3
267.7
269.1
270.5
271.9
273.3
274.7
276.1
277.5
278.9
280.3
281.7
283.1
284.5
285.9
287.3
288.7
290.1
291.5
292.9
294.3
295.7
297.1
298.5
299.9
301.3
302.7
304.1
305.5
306.9
308.3
309.7
311.1
312.5
313.9
315.3
316.7
318.1
319.5
320.9
322.3
323.7
325.1
326.5
327.9
329.3
330.7
332.1
333.5
334.9
336.3
337.7
339.1
340.5
341.9
343.3
344.7
346.1
347.5
348.9
350.3
351.7
353.1
354.5
355.9
357.3
358.7
360.1
361.5
362.9
364.3
365.7
367.1
368.5
369.9
371.3
372.7
374.1
375.5
376.9
378.3
379.7
381.1
382.5
383.9
385.3
386.7
388.1
389.5
390.9
392.3
393.7
395.1
396.5
397.9
399.3
400.7
402.1
403.5
404.9
406.3
407.7
409.1
410.5
411.9
413.3
414.7
416.1
417.5
418.9
420.3
421.7
423.1
424.5
425.9
427.3
428.7
430.1
431.5
432.9
434.3
435.7
437.1
438.5
439.9
441.3
442.7
444.1
445.5
446.9
448.3
449.7
451.1
452.5
453.9
455.3
456.7
458.1
459.5
460.9
462.3
463.7
465.1
466.5
467.9
469.3
470.7
472.1
473.5
474.9
476.3
477.7
479.1
480.5
481.9
483.3
484.7
486.1
487.5
488.9
490.3
491.7
493.1
494.5
495.9
497.3
498.7
500.1
501.5
502.9
504.3
505.7
507.1
508.5
509.9
511.3
512.7
514.1
515.5
516.9
518.3
519.7
521.1
522.5
523.9
525.3
526.7
528.1
529.5
530.9
532.3
533.7
535.1
536.5
537.9
539.3
540.7
542.1
543.5
544.9
546.3
547.7
549.1
550.5
551.9
553.3
554.7
556.1
557.5
558.9
560.3
561.7
563.1
564.5
565.9
567.3
568.7
570.1
571.5
572.9
574.3
575.7
577.1
578.5
579.9
581.3
582.7
584.1
585.5
586.9
588.3
589.7
591.1
592.5
593.9
595.3
596.7
598.1
599.5
600.9
602.3
603.7
605.1
606.5
607.9
609.3
610.7
612.1
613.5
614.9
616.3
617.7
619.1
620.5
621.9
623.3
624.7
626.1
627.5
628.9
630.3
631.7
633.1
634.5
635.9
637.3
638.7
640.1
641.5
642.9
644.3
645.7
647.1
648.5
649.9
651.3
652.7
654.1
655.5
656.9
658.3
659.7
661.1
662.5
663.9
665.3
666.7
668.1
669.5
670.9
672.3
673.7
675.1
676.5
677.9
679.3
680.7
682.1
683.5
684.9
686.3
687.7
689.1
690.5
691.9
693.3
694.7
696.1
697.5
698.9
700.3
701.7
703.1
704.5
705.9
707.3
708.7
710.1
711.5
712.9
714.3
715.7
717.1
718.5
719.9
721.3
722.7
724.1
725.5
726.9
728.3
729.7
731.1
732.5
733.9
735.3
736.7
738.1
739.5
740.9
742.3
743.7
745.1
746.5
747.9
749.3
750.7
752.1
753.5
754.9
756.3
757.7
759.1
760.5
761.9
763.3
764.7
766.1
767.5
768.9
770.3
771.7
773.1
774.5
775.9
777.3
778.7
780.1
781.5
782.9
784.3
785.7
787.1
788.5
789.9
791.3
792.7
794.1
795.5
796.9
798.3
799.7
801.1
802.5
803.9
805.3
806.7
808.1
809.5
810.9
812.3
813.7
815.1
816.5
817.9
819.3
820.7
822.1
823.5
824.9
826.3
827.7
829.1
830.5
831.9
833.3
834.7
836.1
837.5
838.9
840.3
841.7
843.1
844.5
845.9
847.3
848.7
850.1
851.5
852.9
854.3
855.7
857.1
858.5
859.9
861.3
862.7
864.1
865.5
866.9
868.3
869.7
871.1
872.5
873.9
875.3
876.7
878.1
879.5
880.9
882.3
883.7
885.1
886.5
887.9
889.3
890.7
892.1
893.5
894.9
896.3
897.7
899.1
900.5
901.9
903.3
904.7
906.1
907.5
908.9
910.3
911.7
913.1
914.5
915.9
917.3
918.7
920.1
921.5
922.9
924.3
925.7
927.1
928.5
929.9
931.3
932.7
934.1
935.5
936.9
938.3
939.7
941.1
942.5
943.9
945.3
946.7
948.1
949.5
950.9
952.3
953.7
955.1
956.5
957.9
959.3
960.7
962.1
963.5
964.9
966.3
967.7
969.1
970.5
971.9
973.3
974.7
976.1
977.5
978.9
980.3
981.7
983.1
984.5
985.9
987.3
988.7
990.1
991.5
992.9
994.3
995.7
997.1
998.5
1000.0



NOTE: INNER CURB IS 0.3' HIGHER THAN OUTER CURB  
 BEGIN WITH NO CROWN AT 0+0. END FLATTENED  
 CROWN AT STA. 0+30.  
 NO CROWN FROM 1+05.54 TO STA. 3+15.44

MORRIS COURT  
 MORRIS STREET NORTH  
 26-2-30 A.C.  
 CITY OF WICHITA, KANSAS  
 L.K. WHITE CITY ENGINEER  
 APRIL 1949 PROJ. NO. C19-58

19 3 2