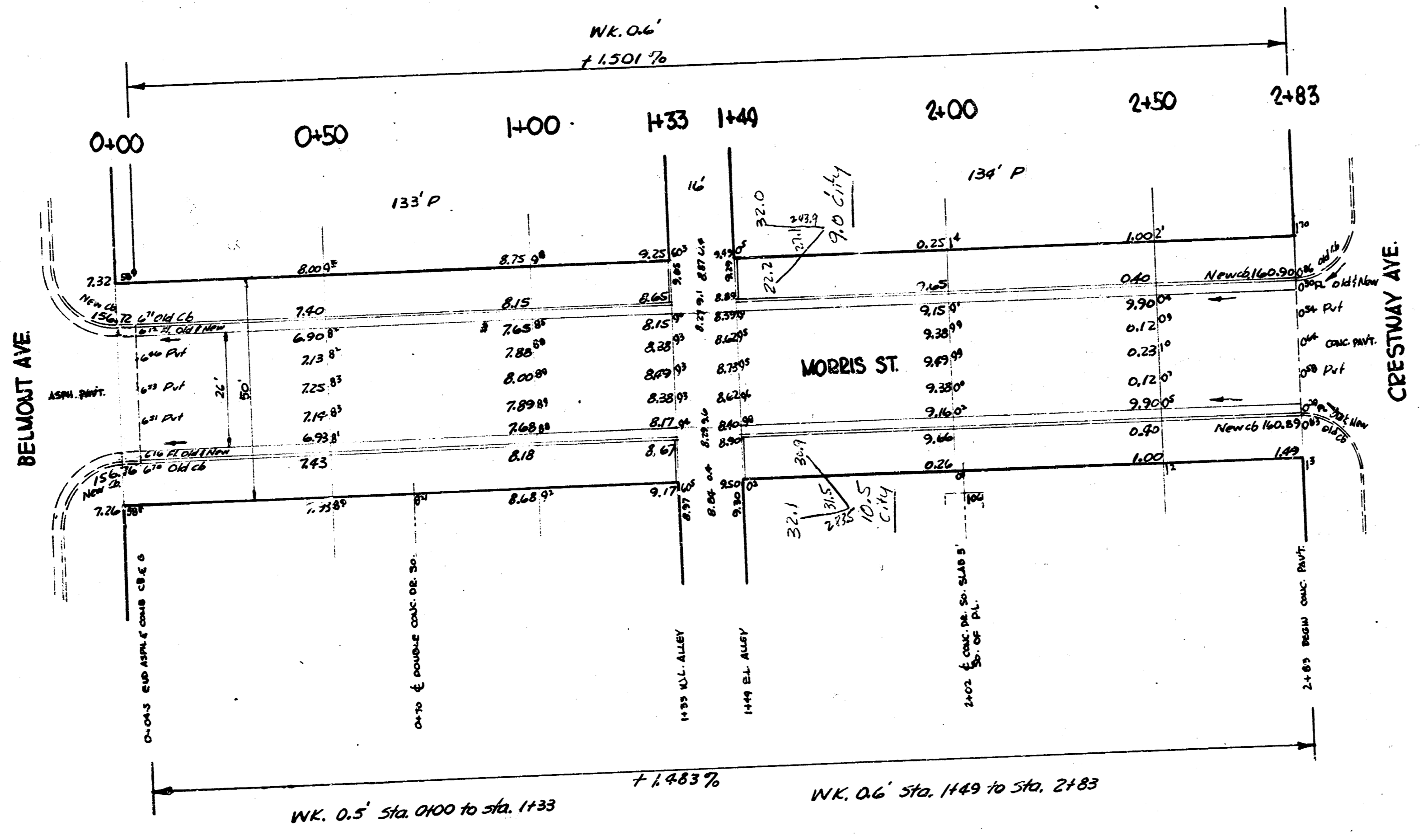
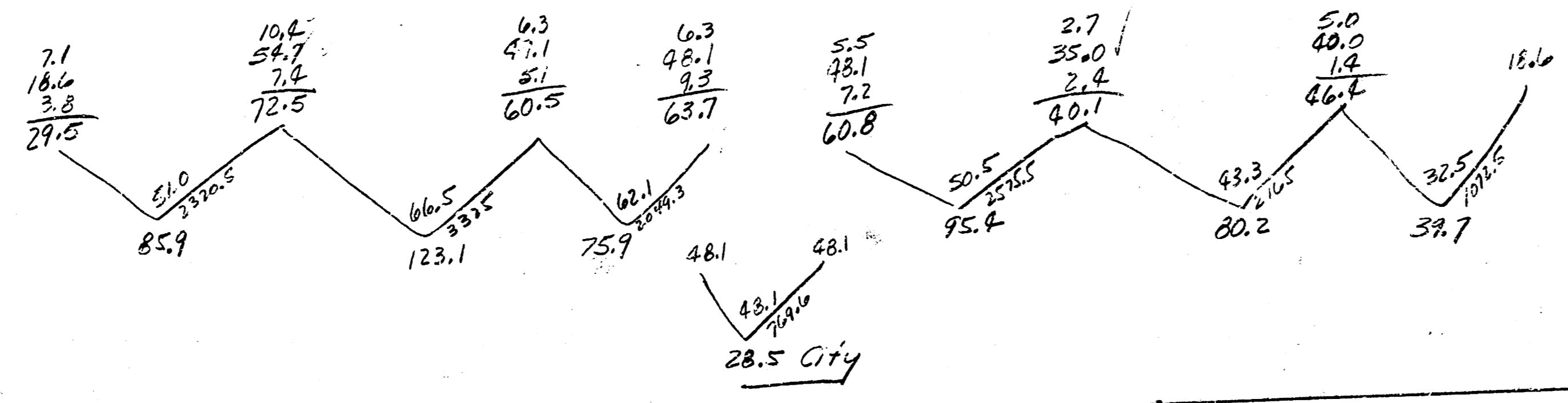


BM 160.88 5' W. GLOBE ON W. END RD, W. COR. CRESTWAY & MORRIS
 BM 156.49 12' W. DITCHIE, W. COR. MORRIS, EL. BELMONT
 BM 165.05 'S.E. COR. CONC. STEP *TS S. CRESTWAY



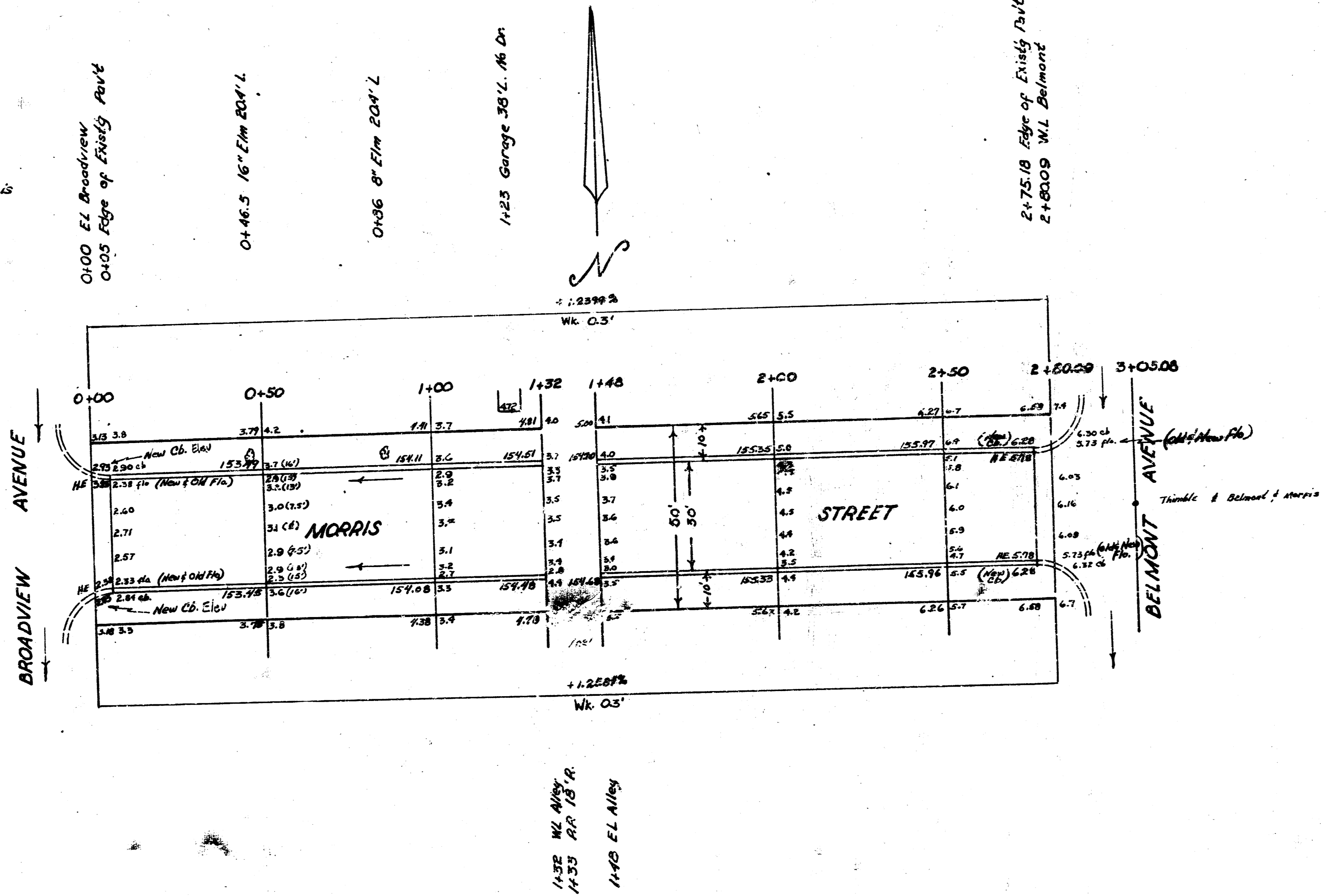
Prop	Excav.	City
85.9		28.5
123.1		16.5
75.7		7.0
48.1		48.0
80.2		4.8
39.7		
500.2		
+1070		
total	50.0	50.2

total 50.8 Cu. Yds.



MORRIS ST.
 E.L. BELMONT WL. CRESTWAY
 26-2-30 AC
 CITY OF WICHITA, KANS.
 LK WHITE CITY ENGINEER
 AUGUST, 1950 PROJ. NO. CLK-80

BM 156.69 72' in Ritchie E and radius N.E. cor. Belmont & Morris



City		Prop	
cut	Fill	cut	Fill
0.2	5.1	25.3	0.0
+10%	+10%	14.7	0.3
0.2 yds ² 5.6 yds ²		2.8	4.6
Fill = 2.5 Tons		0.4	15.4
		20.0	6.2
		19.6	6.0
		82.3	2.0
		8.3	2.7
		91.1	2.7
		Fill = 13.7 Tons	

MORRIS ST.
EL BROADVIEW - WL BELMONT
30' Conc. and C.
City of Wichita Kans.
L.K. White City Engineer
Feb, 1931 Proj. No. CIO-220

