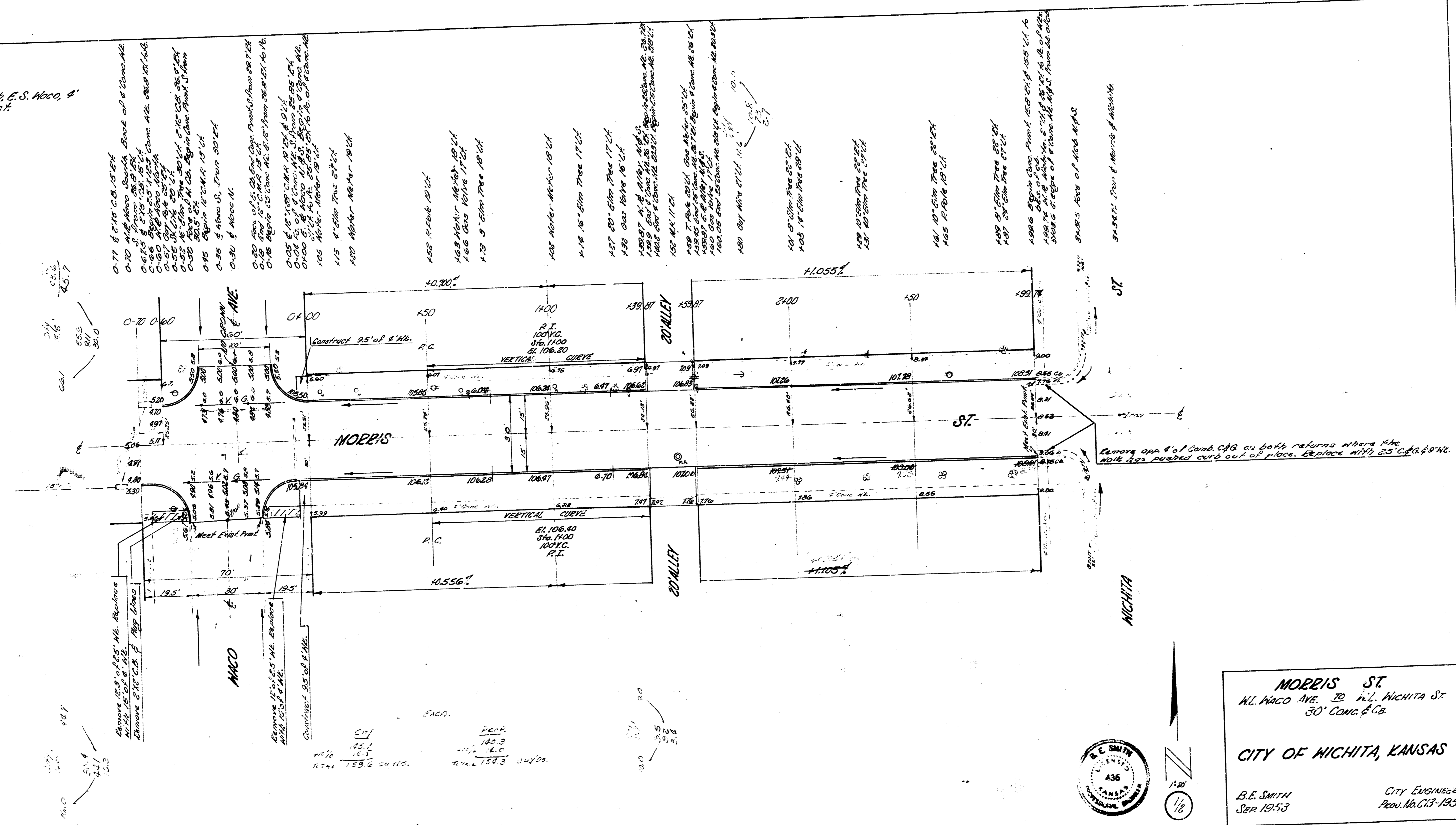


Survey Map
 Plan
 Exc. C.B.
 (Unrevised)

B.M. 105.91 7 1/2" HUBST & Nails South E.S. Maco &
 South of J.L. Morris East.
 Stationing on &



MORRIS ST
 N.L. Maco Ave. to N.L. Wichita St.
 30' Conv. & Co.
CITY OF WICHITA, KANSAS
 E.E. SMITH
 SEP 1953
 CITY ENGINEER
 PROJ. NO. 113-185