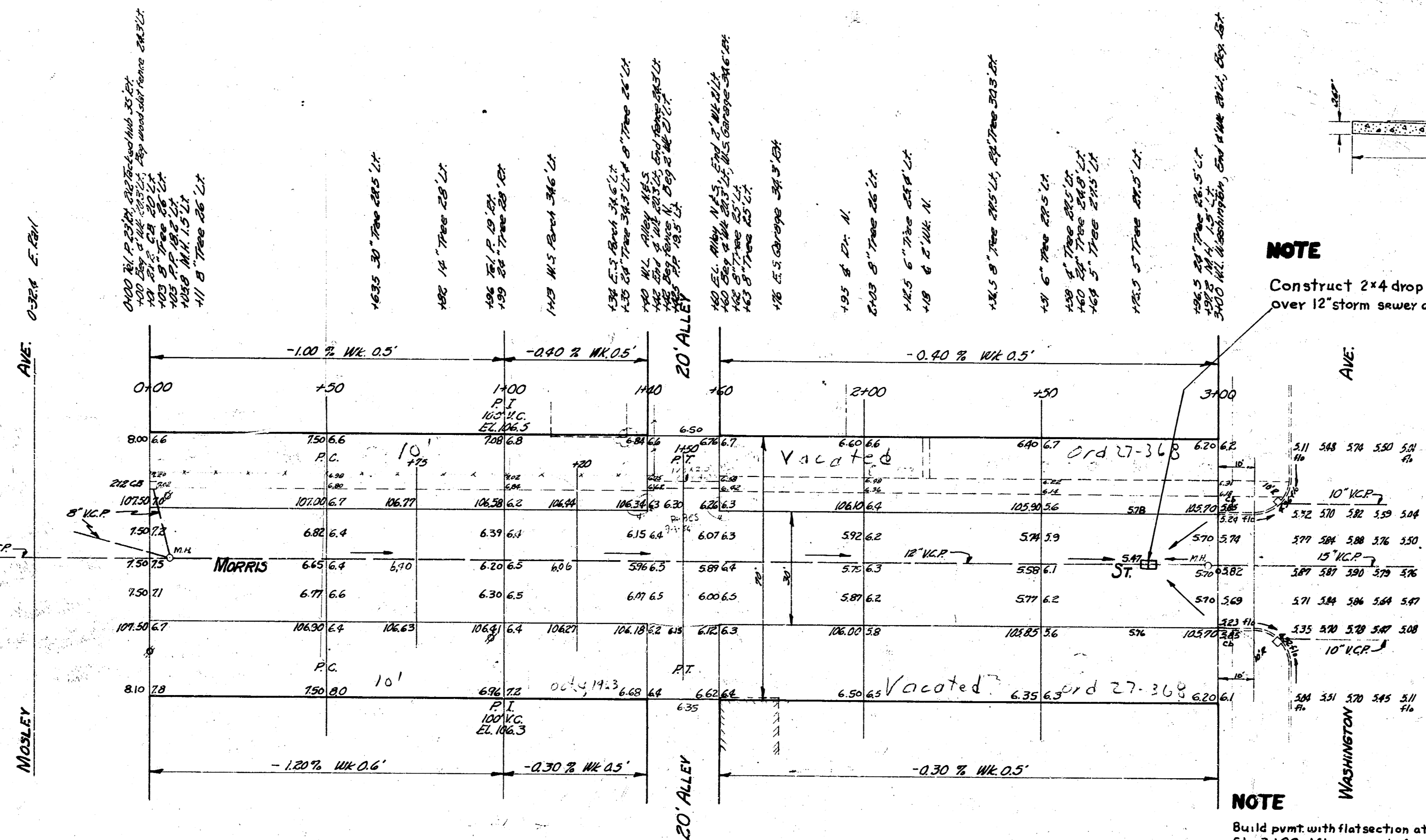


B.M. 10725 Iron in thimble & Lincoln & W.L. Masley S.
 B.M. 10834 Spike E.S. Tel. pole 25' 2" @ Sta 0+00
 Straining on E.

NOTE
 Build pvt. with flat section at Sta 0+00. Warp
 pvt. to match typical section at Sta 0+50

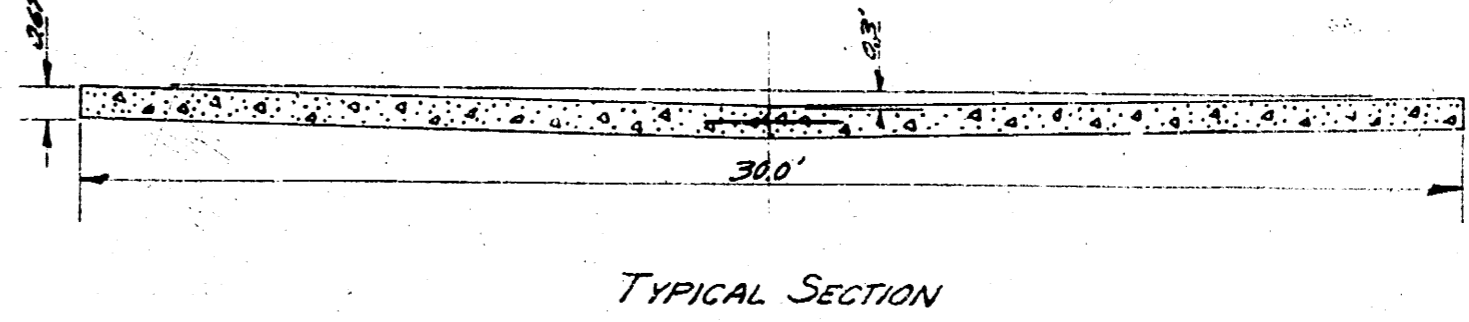


NOTE
 Construct 2'x4' drop inlet
 over 12" storm sewer at Sta 2+80

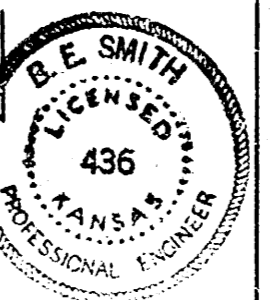
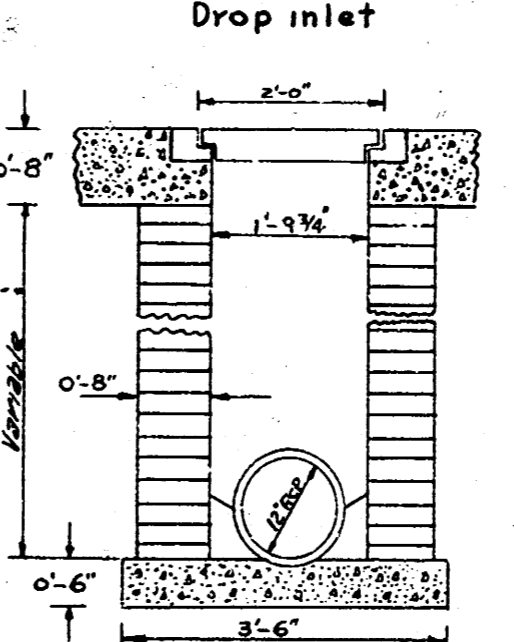
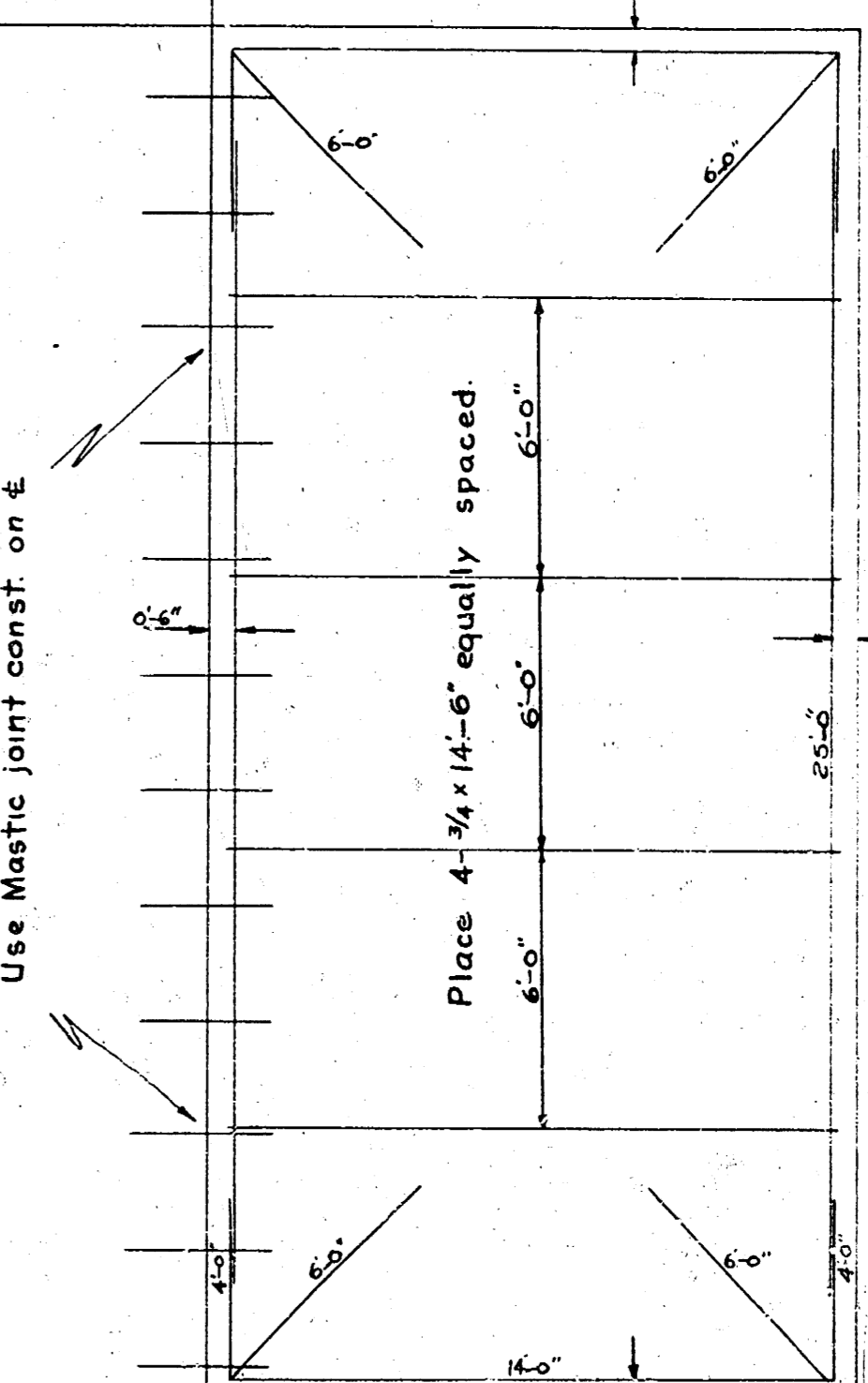
NOTE
 Build pvt. with flat section at
 Sta 3+00. After removal of cross-
 hatched section warp to meet
 existing pvt.

NOTE

Dowel bars $\frac{1}{2}$ " x 30 on E at 2' c to c.



TYPICAL SECTION



MORRIS
 E.L. MASLEY TO W.L. WASHINGTON
 30" - 8" CONC.
 CITY OF WICHITA KANSAS
 B.E. SMITH CITY ENGINEER
 MAY 1954 PROJ. No. CM-52