

B.M. 104.55 "G" in Globe E. end Rod E.L. Kansas & S. Morris

B.M. 104.29 "G" in Globe end Rod W.L. Minneapolis & S. Morris

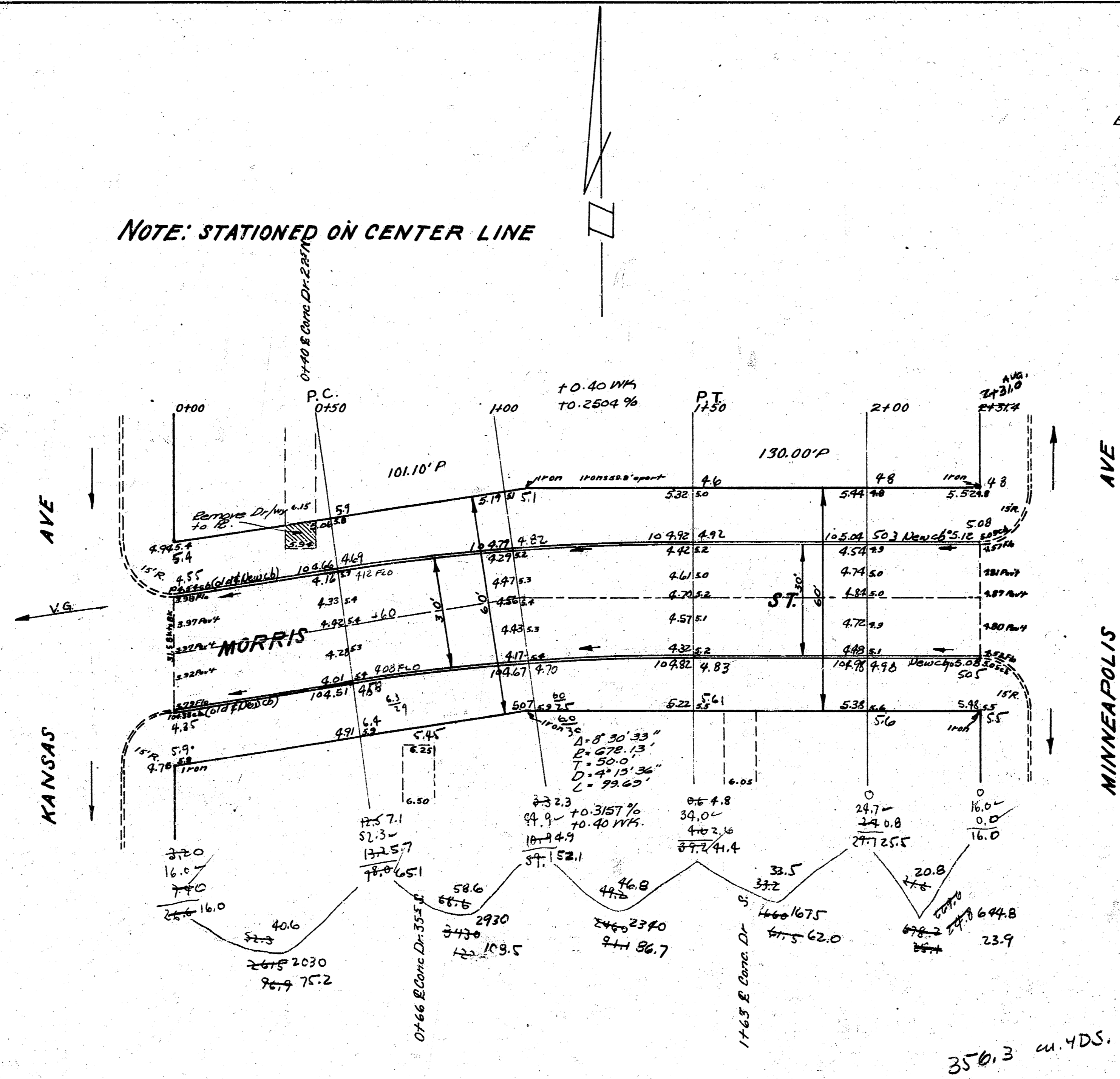
DEFLECTIONS

0+20	0'	0.00'
0+75	55'	0.31'
1+20	100'	0.60'
1+75	155'	0.88'
2+20	200'	1.15'

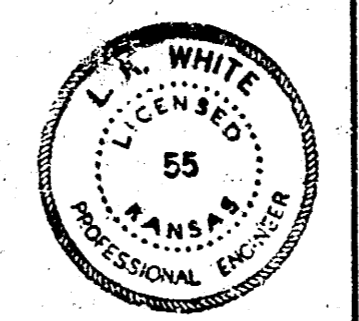
NOTE: STATIONED ON CENTER LINE

PROPERTY

96.9
127.0
91.1
61.5
25.1
401.6
40.2 +10%
441.8 Total Cu Yds Excavation



MORRIS ST.  
 E.L. KANSAS AVE. W.L. MINNEAPOLIS  
 50' CONC. & CB.  
 CITY OF WICHITA, KANSAS  
 L.K. WHITE CITY ENGINEER  
 JANUARY 13, 1951 PROJ. NO. C10205



4 1 52 \*