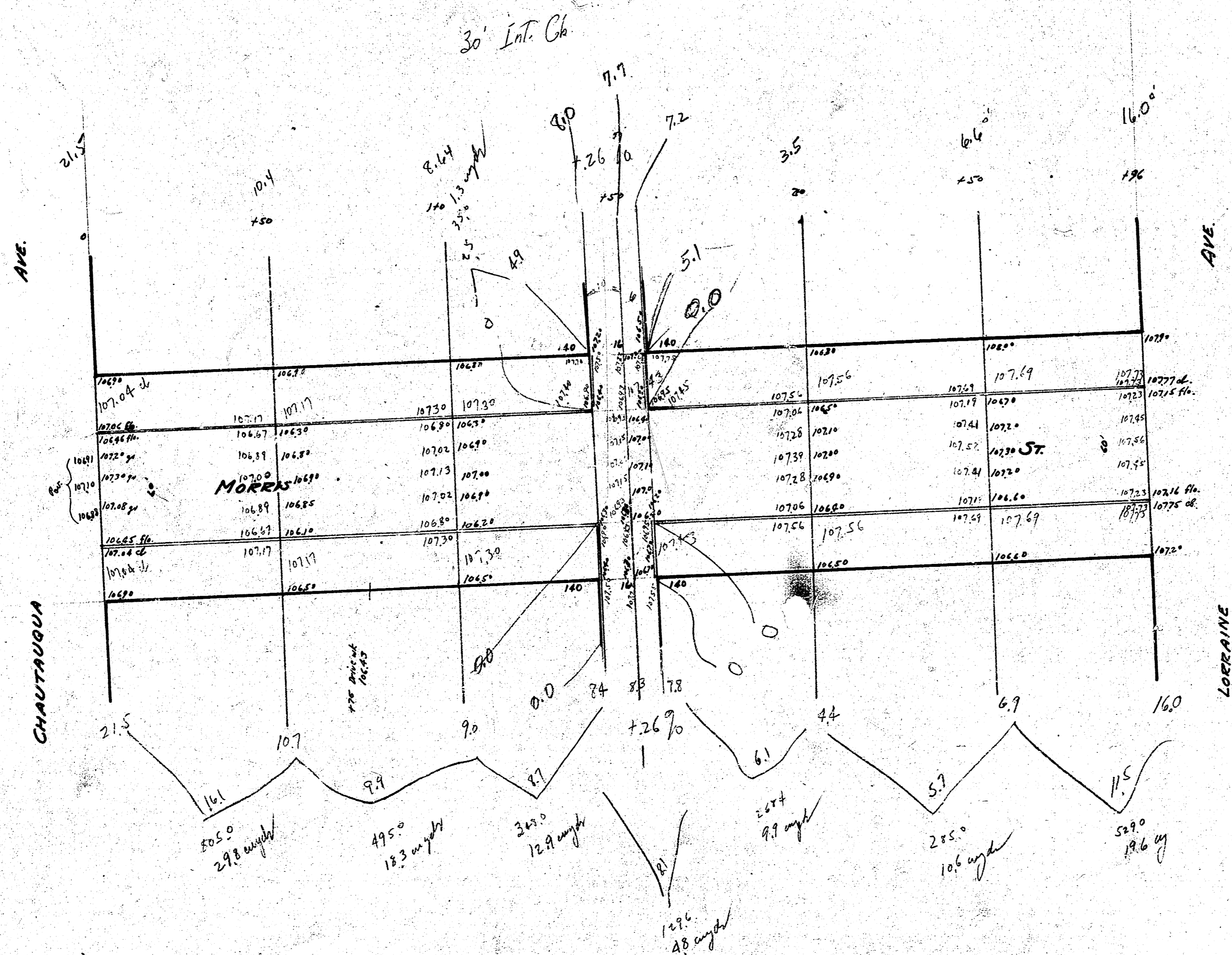


Morris St. - EL. Chautauqua to W.L. Lorraine



37' Elev 107.10 "in (Keller App. 11) @ 7.0' Morris St. Chautauqua

$$\begin{array}{r} \text{Proj.} - 101.1 + 10.1 = 111.2 \text{ angle} \\ \text{City} \quad 6.1 + 0.6 = \frac{6.7}{117.9} \end{array}$$

$$\frac{390}{117.9} = 3.31$$