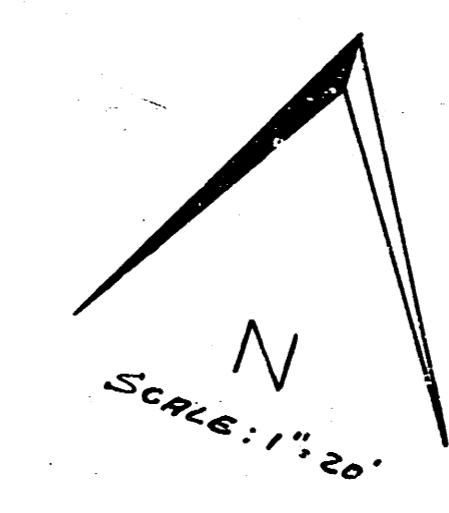
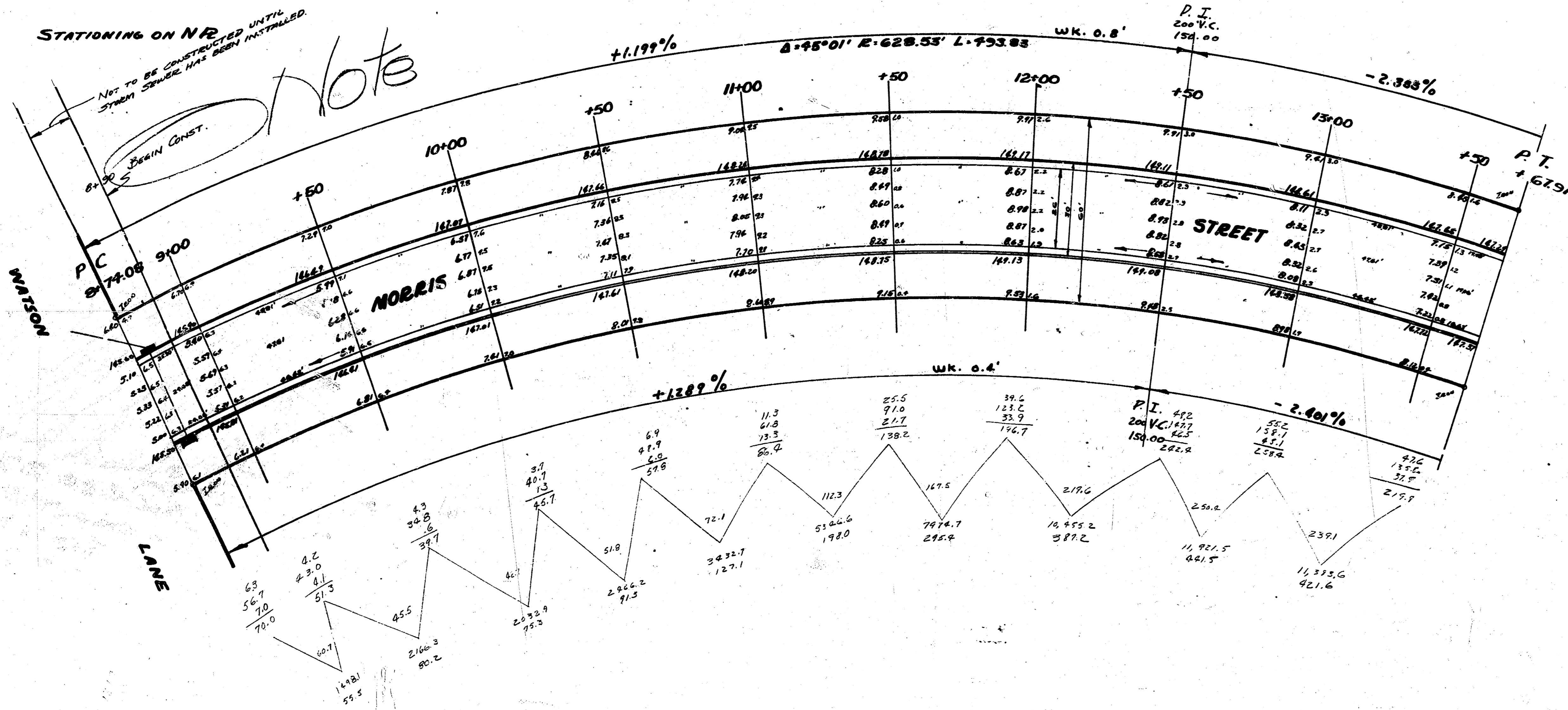


63-Y

B.M. 146.91 Top 80" SPIES IN TOP OF Hedge Post @ 1/4 Sec. Cor. SE Cor. Eastridge Gth

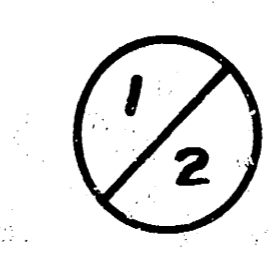
STATIONING ON NB

NOTE
NOT TO BE CONSTRUCTED UNTIL
STREET CURVE HAS BEEN INSTALLED.
SPRAIN CONST.

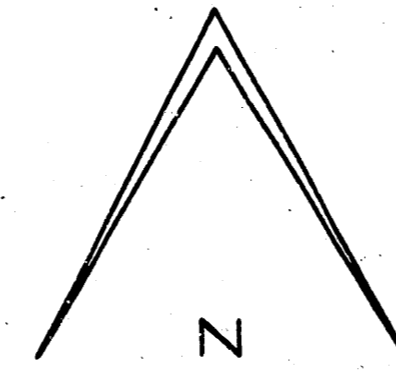


TOTALS
CITY 2162.8
10% 316.3
3479.1

2.56
1.73
1.3



MORRIS
EL WATSON LANE TO W.L.W ARMOUR
26-2-30 AC.
CITY OF WICHITA KANSAS
L.K. WHITE CITY ENGINEER
APRIL 1952 PROJ. No. C-2-10



$\frac{10.5}{2.5}$
 $\frac{4.95}{1.24}$
 $\frac{16.45}{6.29}$
 $\frac{10.5}{10.5}$

