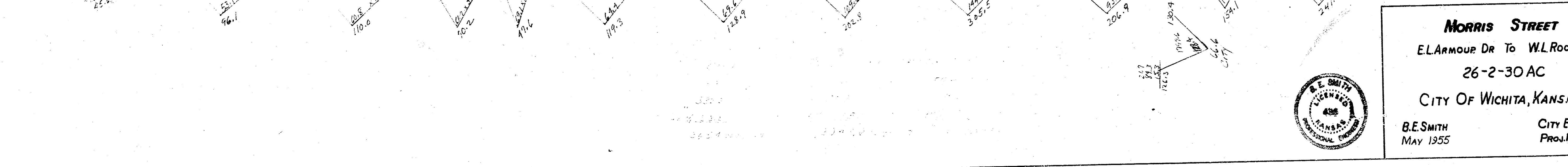
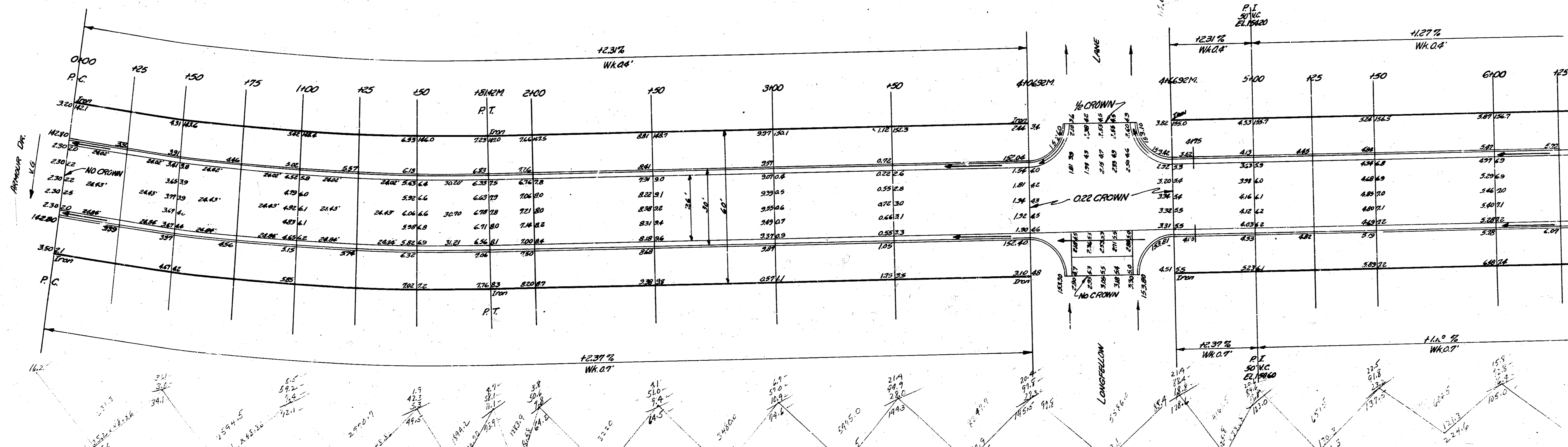


BM 14431 NE Cor Bottom Cone Strip No. 145 W. Armour Dr.  
 BM 14603 NE Cor Bottom Cone Strip No. 123 W. Armour Dr.  
 BM 15541 6" Square 33 1/2' N of S.E. Corner 28' E of W.L. Rock Rd.  
 BM 15620 6" Square 33 1/2' N of N.E. Cor 129' E of W.L. Rock Rd.  
 Sta. On Base Line 3° N. of S.R.

CURVE DATA  
 Radius = 320.57' on Base Line  
 Δ 11° 17' 30" L = 181.42'

STATION	CHORD S @ V/Cs	CHORD S @ S/Cs	DEFLECTION	TOTAL DEFL.
0+00	P.C.			
0+25	23.84	24.98	0° 46' 41"	0° 46' 41"
0+50	23.84	24.98	0° 46' 41"	1° 33' 22"
0+75	23.84	24.98	0° 46' 41"	2° 20' 03"
1+00	23.84	24.98	0° 46' 41"	3° 06' 44"
1+25	23.84	24.98	0° 46' 41"	3° 53' 25"
1+50	23.84	24.98	0° 46' 41"	4° 40' 05"
1+81.42	29.98	31.41	0° 58' 40"	5° 38' 45"



**MORRIS STREET**  
 EL ARMOUR DR TO W.L. ROCK RD  
 26-2-30 AC  
 CITY OF WICHITA, KANSAS  
 B.E. SMITH  
 MAY 1955  
 CITY ENGINEER  
 PROJ. NO. C14-168



Survey  
 Plan  
 Date  
 Checked