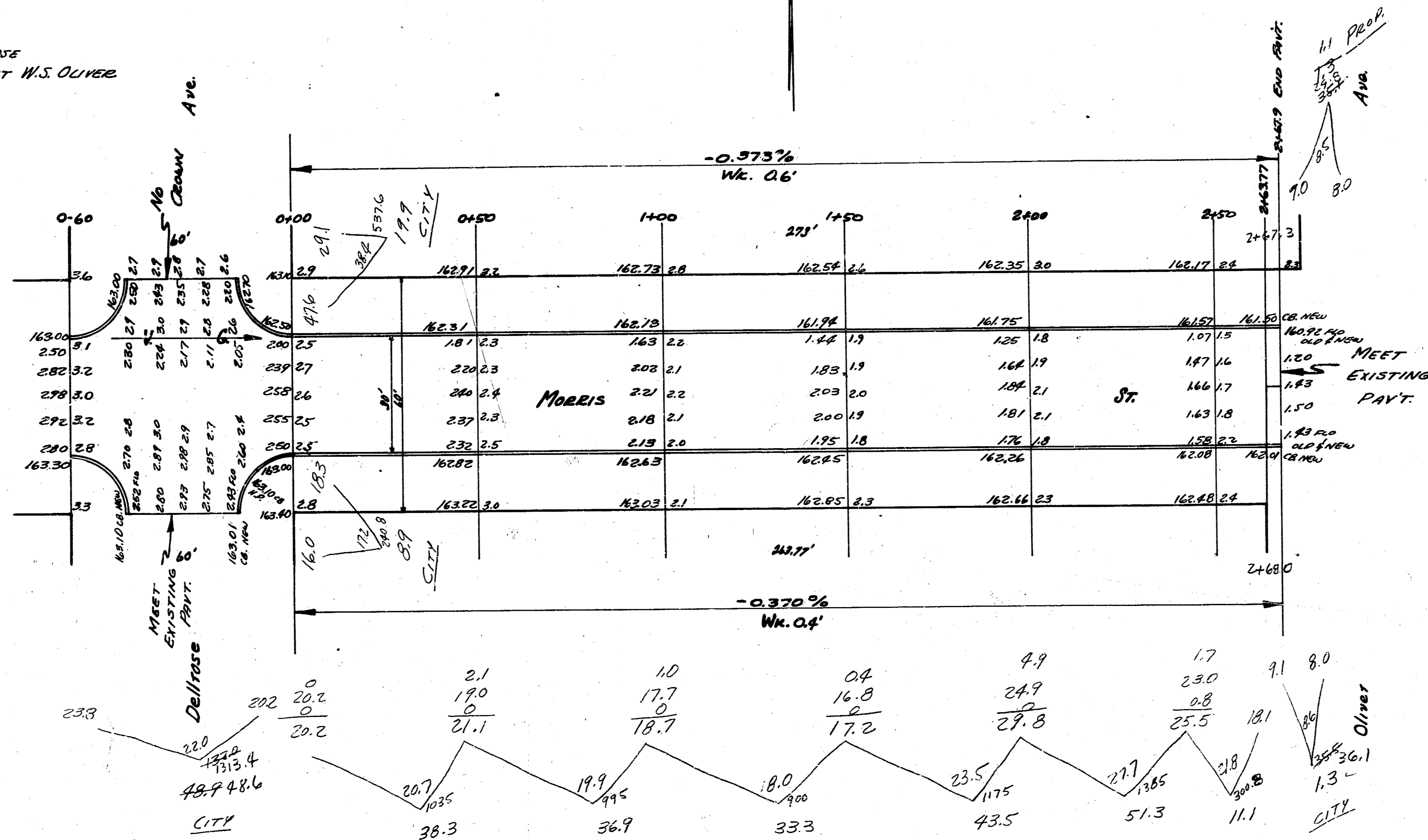


B.M. 16523 S.E. Cor. Cong. Porch, Ho # 757 S. DALLHOSE  
 B.M. 15649 "6" in Globe W. End Lot, S. Co. of Gilbert W.S. OLIVER



Prop	CITY
38.3	17.9
36.9	8.9
33.3	48.9
43.5	1.3
51.3	79.0
11.1	1.3
215.7	210.9
+10%	86.9 cu. yds.
237.3 cu. yds.	

Morris St.  
 W.L. Dillrose - W.L. Oliver  
 30' Conc. Cb.  
 City of Wichita, Kansas  
 L.M. White City Engineer  
 March 1949 Project 019-10