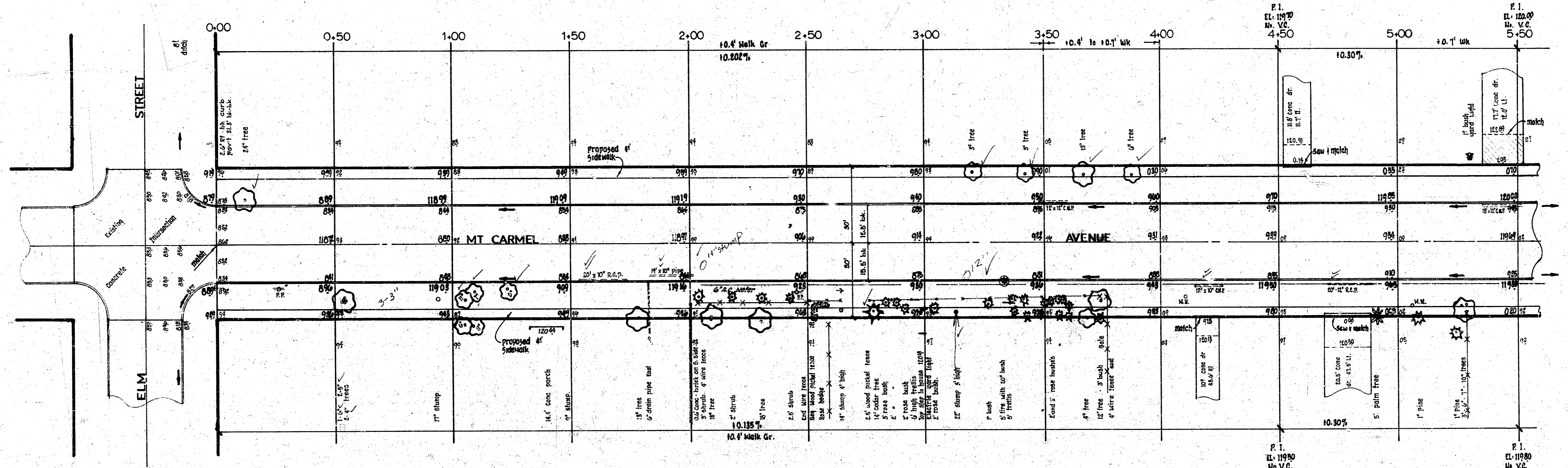


B.M. 12169 City Standard S.E. Cor CENTRAL and SHERIDAN.
 B.M. 12478 Top 1/2 ball N.W. Cor R.R. Central M.M. CENTRAL and MT CARMEL.
 B.M. 11979 10' on globe S.E. of S.W. and radius. S.E. radius ELM and MT CARMEL.
 Base Line - 12' East of Ideal Property Line.
 B.M. 12341 N.E. Cor bottom step House #185 MT CARMEL.



Survey MAUS
 Engineer
 License No. 3684
 Director
 Kansas

And item in last pipe removed is to include backfill removal.

PROPERTY		CITY	
Excavation	Comp Fill	Excavation	Comp Fill
2,196.6 Cu yds	99.7 Cu yds	186.2 Cu yds	
110% 219.7	110% 9.0	15.2	
2,416.5 Cu yds	99.7 Cu yds	191.4 Cu yds	

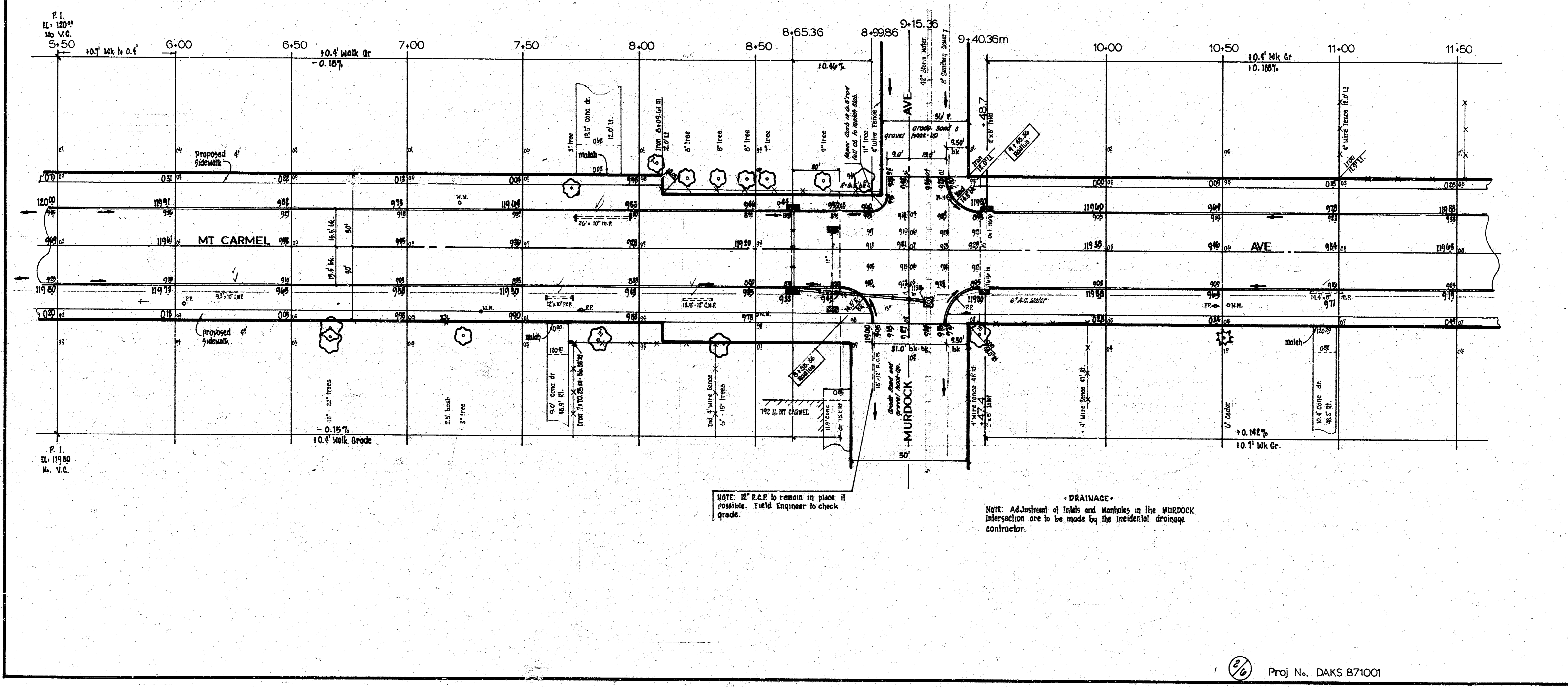
SIDEWALK
 Grade parking and clear right of way for proposed sidewalk. compact backfill in sidewalk area. work to be constructed by others.



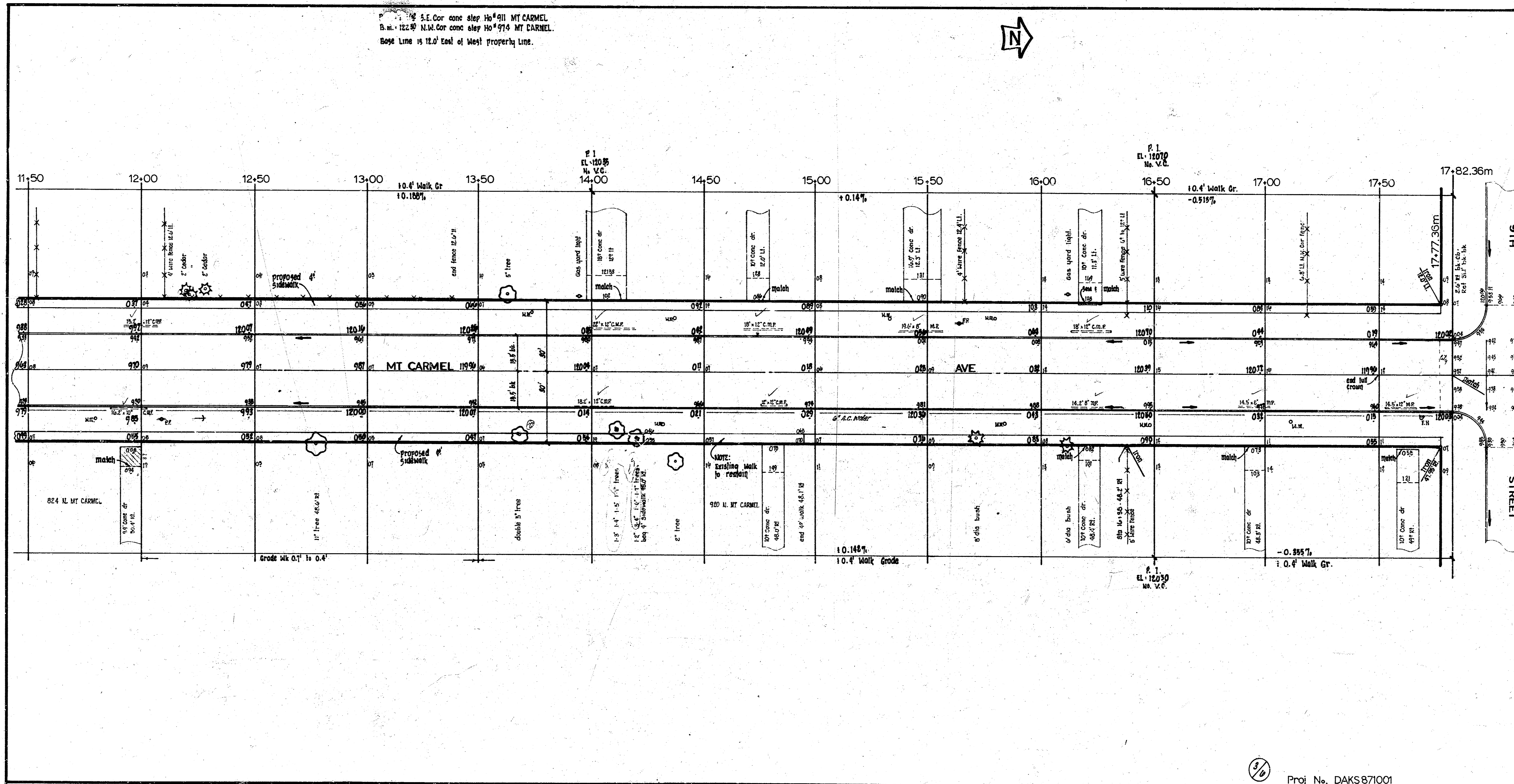
MT CARMEL AVENUE
 N.L. ELM ST. to S.L. 9TH ST
 30' Concrete and Curb
 R.W. LINN CITY ENGINEER
 CITY OF WICHITA, KANSAS
 DATE MAY 1971 Proj No. DAKS 571001

1/6

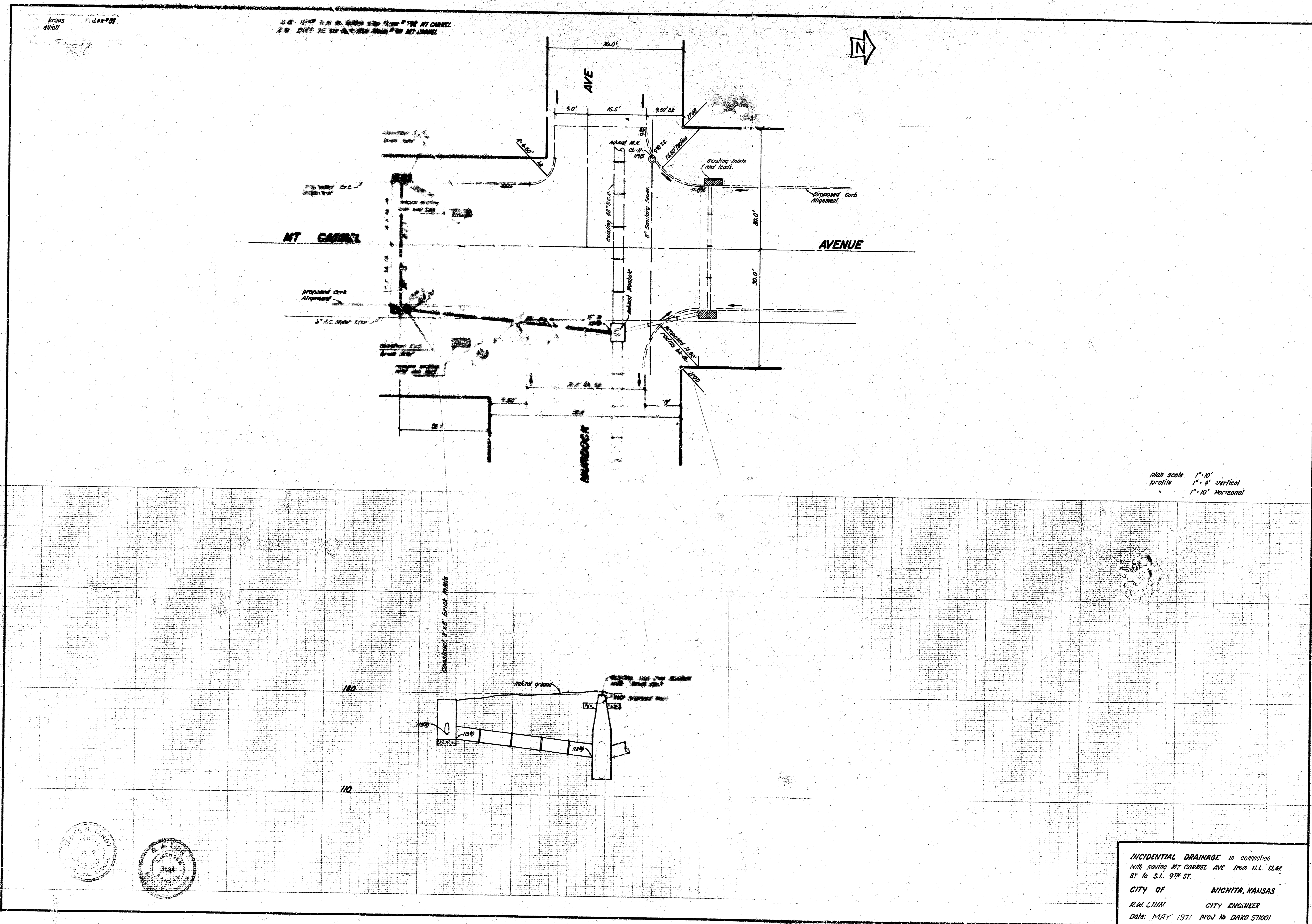
B.M. 12104 N.M. Cor bottom step House 192 MT CARMEL



P.I. 122.87 S.E. Cor conc aty Ho 9718 MT CARMEL.
 B.M. 122.87 N.M. Cor conc aty Ho 9718 MT CARMEL.
 5094 Line is 12.0' East of West Property Line.



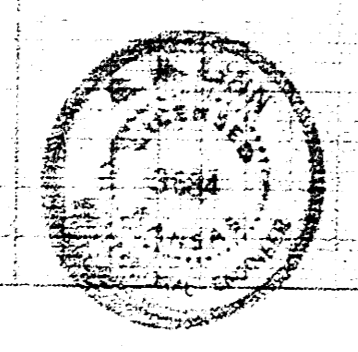
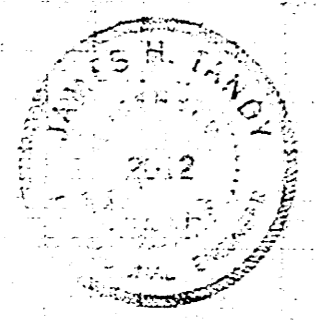
1/2 Proj. No. DAKS 871001
 11 9 4 10



Erasmus
 2/24/21

S. B. 1917 1/2" = 1' 0" Plan Scale
 S. B. 1917 1/2" = 1' 0" Profile Scale

plan scale 1" = 10'
 profile 1" = 4' vertical
 1" = 10' horizontal



INCIDENTAL DRAINAGE in connection
 with paving MT CARMEL AVE from ALL ELM
 ST to S.L. 9TH ST.
 CITY OF NICHITA, KANSAS
 R.A. LINN CITY ENGINEER
 Date: MAY 1971 Proj. No. DARD 57001