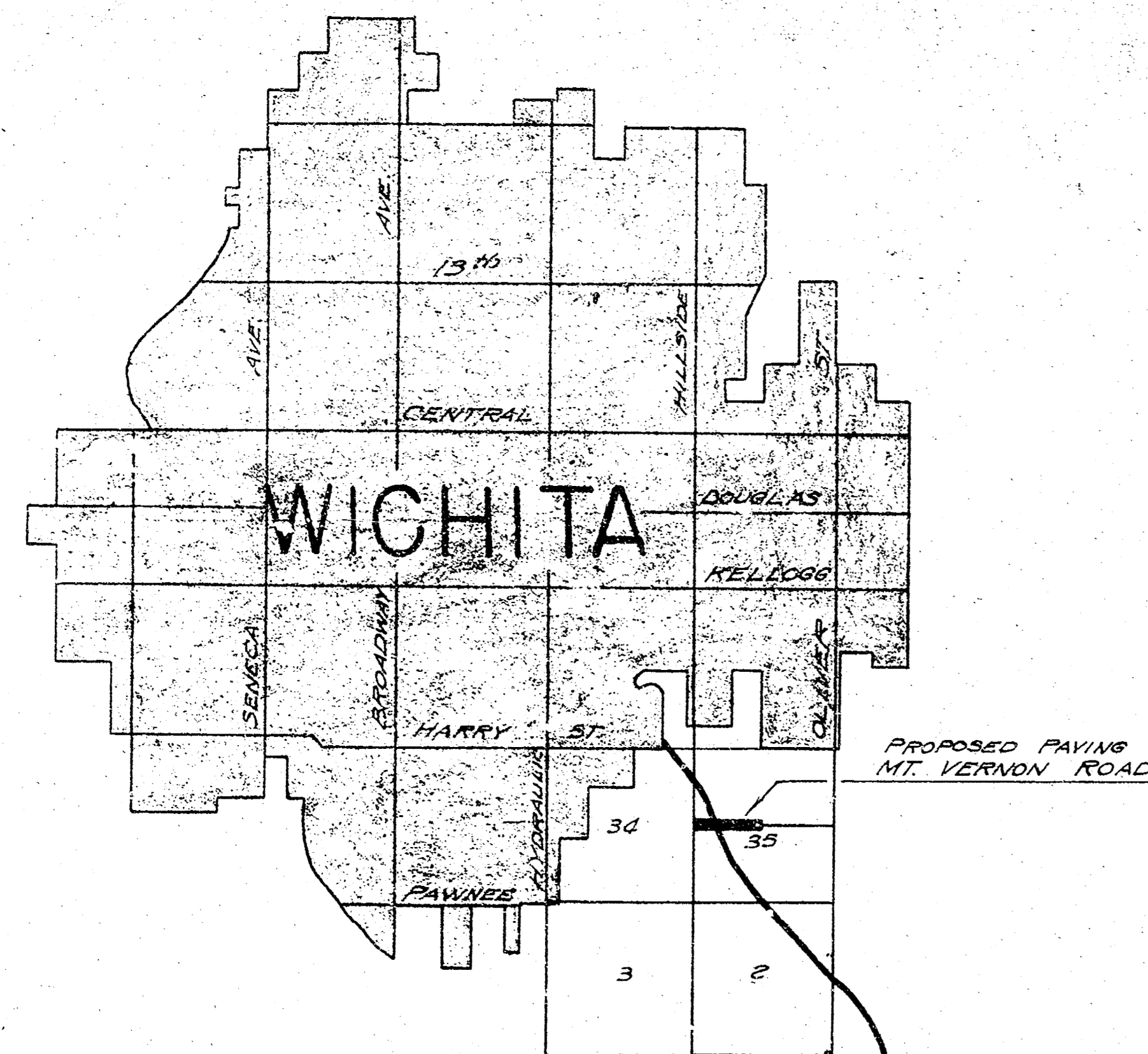


STATE	PROJECT NO.	FISCAL YEAR	SHEET NO.	TOTAL SHEETS
KANSAS			1	



VICINITY MAP



# PROPOSED GRADING & PAVING

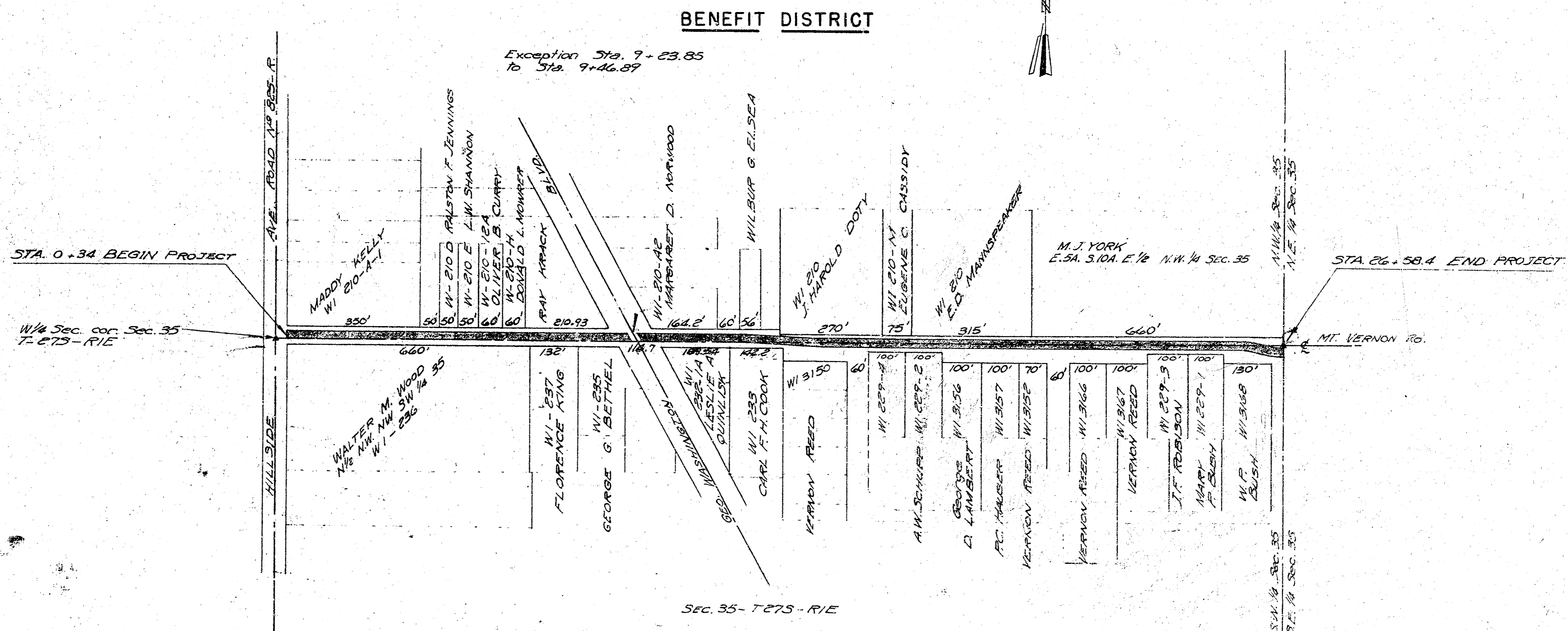
## MT. VERNON ROAD

RD. No. 623-1/2-29

Hillside to Bluff

INDEX

Page 1	Title sheet
2-3	Plan + Profile
4	Typical section, Summary of Quantities + Intersection detail
5-12	Cross Sections



CONVENTIONAL SIGNS

COUNTY LINE	---
SECTION LINE	---
WIRE FENCE	---
HEDGE ROW	~~~~~
RAILROADS	---
SURVEY LINE	---
RIGHT OF WAY	---
TELEPHONE POLE	●
POWER POLE	■
TRAVELED WAY	---

GROSS LENGTH OF PROPOSED	2624.4	FT.	
EXCEPTIONS	23.0	FT.	
ADDITIONS	0.0	FT.	
NET LENGTH OF PROJECT	2601.4	FT.	0.493 MILES
NET LENGTH OF BRIDGES	0.0	FT.	0.0 MILES
NET LENGTH OF ROAD	2601.4	FT.	0.493 MILES

APPROVED BY

SEDGWICK COUNTY ENG. DEPT.

DATE July 10, 1946

APPROVED DATE

APPROVED

H. J. Galey

CITY ENGINEER

DATE Aug 1, 1946

APPROVED DATE



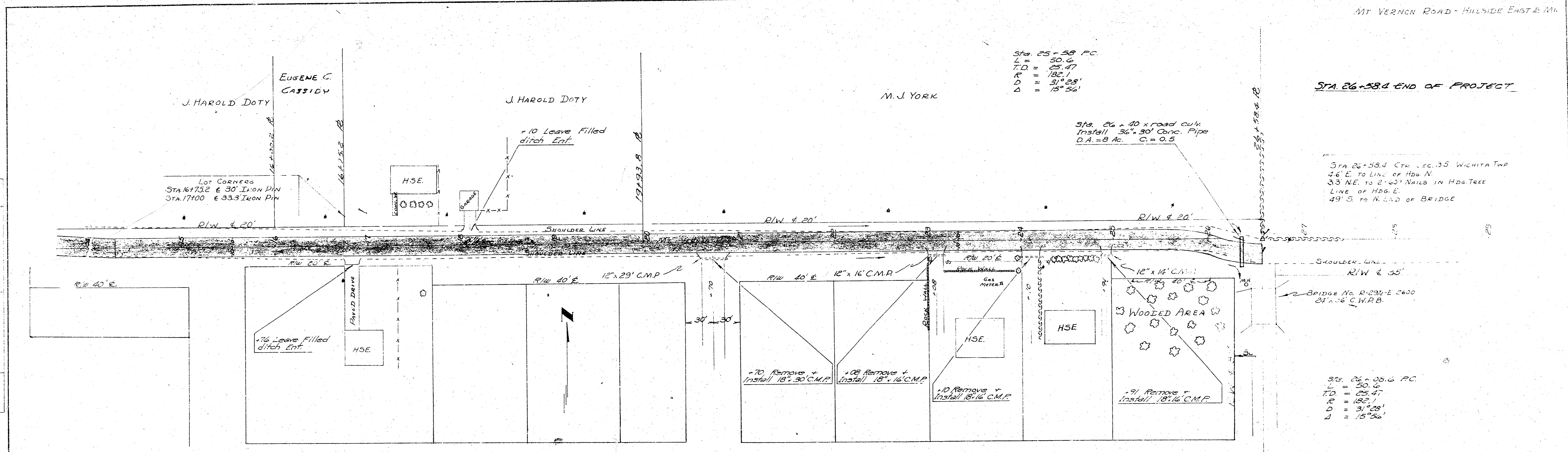
STA 26+58.4 END OF PROJECT

Sta 26+58.4 CTD. EC. 35 WICHITA TWP  
 46 E TO LINE OF HDB N  
 33 NE TO 2' 00" NAILS IN HDB TREE  
 LINE OF HDB E  
 49 S TO N. END OF BRIDGE

Sta 26+58.4 PC  
 L = 50.6  
 T.D. = 25.47  
 R = 182.1  
 D = 31° 28'  
 Δ = 15° 56'

Sta 25+58 PC  
 L = 50.6  
 T.D. = 25.47  
 R = 182.1  
 D = 31° 28'  
 Δ = 15° 56'

Sta 26+40 road curb  
 Install 36" 30' Conc. Pipe  
 D.A. = 8 Ac. C = 0.5



BM 604 Nail in H.L.P. Left of Sta 26+85 Elev. 1308.25

