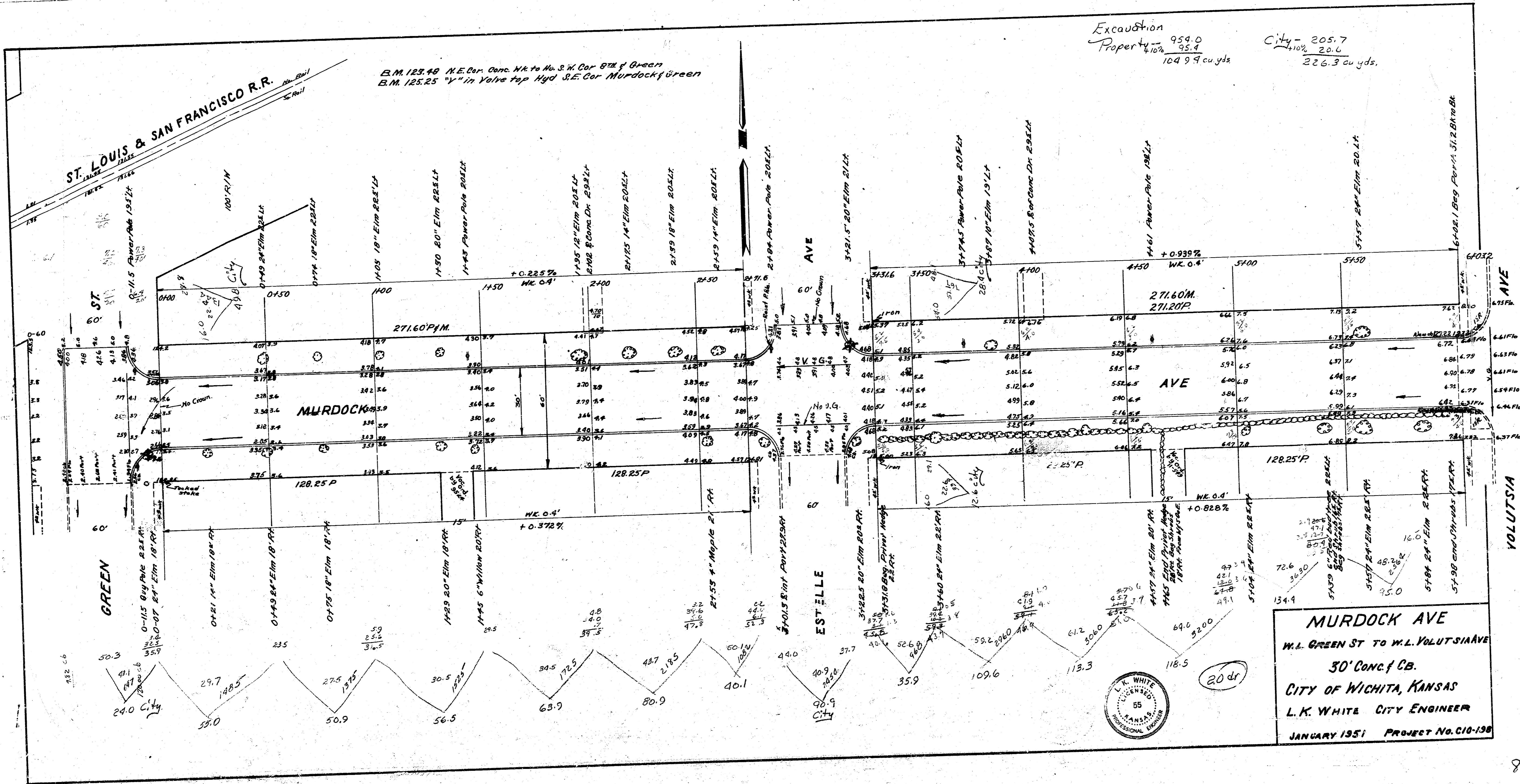
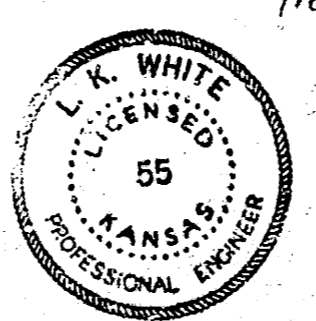


Excavation
 Property $\frac{959.0}{95.4}$
 104 9 9 cu yds

City - 205.7
 $\frac{410.0}{20.6}$
 226.3 cu yds.



MURDOCK AVE
 W.L. GREEN ST TO W.L. YOLUTSIA AVE
 30' Conc. f. CB.
 CITY OF WICHITA, KANSAS
 L. K. WHITE CITY ENGINEER
 JANUARY 1951 PROJECT No. C10-138



B.M. 123.49 N.E. Cor. Conc. Wk to No. 34 Cor 972 f Green
 B.M. 125.25 1/2" in Valve top Hyd S.E. Cor Murdock f Green

ST. LOUIS & SAN FRANCISCO R.R.

GREEN

AVE

ESTELLE

AVE

YOLUTSIA

MURDOCK

MURDOCK AVE

W.L. GREEN ST TO W.L. YOLUTSIA AVE

30' Conc. f. CB.

CITY OF WICHITA, KANSAS

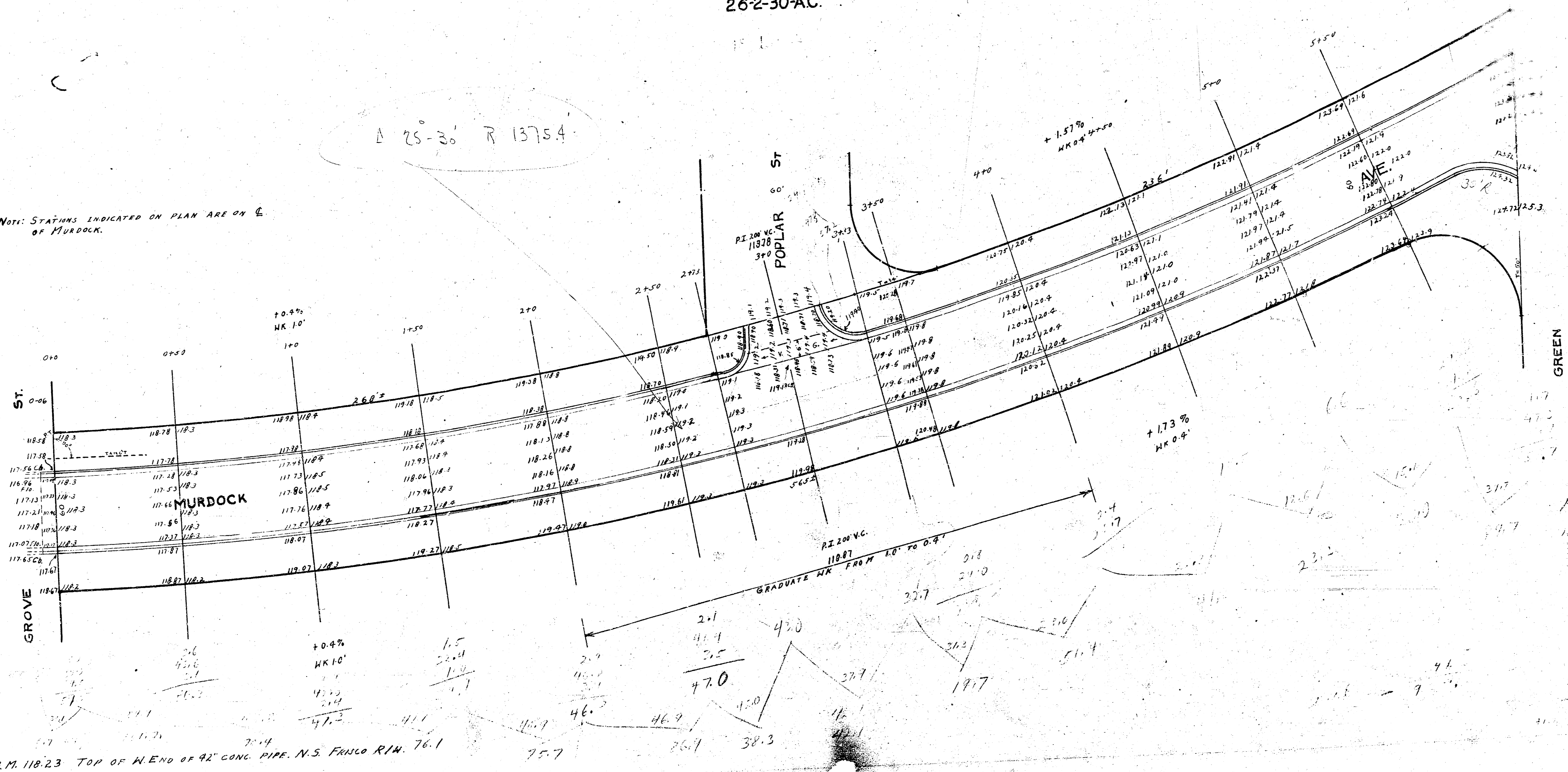
L. K. WHITE CITY ENGINEER

JANUARY 1951 PROJECT No. C10-138

1942
 MURDOCK AVE. ——— E.L. GROVE TO W.L. GREEN
 26-2-30-AC.

$\Delta 25-30' R 1375.4$

NOTE: STATIONS INDICATED ON PLAN ARE ON C. OF MURDOCK.



B.M. 118.23 TOP OF N. END OF 42" CONC. PIPE, N.S. FINLO R.I.W. 76.1

117.7	117.7
117.4	117.4
117.1	117.1
116.8	116.8
116.5	116.5
116.2	116.2
115.9	115.9
115.6	115.6
115.3	115.3
115.0	115.0
114.7	114.7
114.4	114.4
114.1	114.1
113.8	113.8
113.5	113.5
113.2	113.2
112.9	112.9
112.6	112.6
112.3	112.3
112.0	112.0
111.7	111.7
111.4	111.4
111.1	111.1
110.8	110.8
110.5	110.5
110.2	110.2
109.9	109.9
109.6	109.6
109.3	109.3
109.0	109.0
108.7	108.7
108.4	108.4
108.1	108.1
107.8	107.8
107.5	107.5
107.2	107.2
106.9	106.9
106.6	106.6
106.3	106.3
106.0	106.0
105.7	105.7
105.4	105.4
105.1	105.1
104.8	104.8
104.5	104.5
104.2	104.2
103.9	103.9
103.6	103.6
103.3	103.3
103.0	103.0
102.7	102.7
102.4	102.4
102.1	102.1
101.8	101.8
101.5	101.5
101.2	101.2
100.9	100.9
100.6	100.6
100.3	100.3
100.0	100.0
99.7	99.7
99.4	99.4
99.1	99.1
98.8	98.8
98.5	98.5
98.2	98.2
97.9	97.9
97.6	97.6
97.3	97.3
97.0	97.0
96.7	96.7
96.4	96.4
96.1	96.1
95.8	95.8
95.5	95.5
95.2	95.2
94.9	94.9
94.6	94.6
94.3	94.3
94.0	94.0
93.7	93.7
93.4	93.4
93.1	93.1
92.8	92.8
92.5	92.5
92.2	92.2
91.9	91.9
91.6	91.6
91.3	91.3
91.0	91.0
90.7	90.7
90.4	90.4
90.1	90.1
89.8	89.8
89.5	89.5
89.2	89.2
88.9	88.9
88.6	88.6
88.3	88.3
88.0	88.0
87.7	87.7
87.4	87.4
87.1	87.1
86.8	86.8
86.5	86.5
86.2	86.2
85.9	85.9
85.6	85.6
85.3	85.3
85.0	85.0
84.7	84.7
84.4	84.4
84.1	84.1
83.8	83.8
83.5	83.5
83.2	83.2
82.9	82.9
82.6	82.6
82.3	82.3
82.0	82.0
81.7	81.7
81.4	81.4
81.1	81.1
80.8	80.8
80.5	80.5
80.2	80.2
79.9	79.9
79.6	79.6
79.3	79.3
79.0	79.0
78.7	78.7
78.4	78.4
78.1	78.1
77.8	77.8
77.5	77.5
77.2	77.2
76.9	76.9
76.6	76.6
76.3	76.3
76.0	76.0
75.7	75.7
75.4	75.4
75.1	75.1
74.8	74.8
74.5	74.5
74.2	74.2
73.9	73.9
73.6	73.6
73.3	73.3
73.0	73.0
72.7	72.7
72.4	72.4
72.1	72.1
71.8	71.8
71.5	71.5
71.2	71.2
70.9	70.9
70.6	70.6
70.3	70.3
70.0	70.0
69.7	69.7
69.4	69.4
69.1	69.1
68.8	68.8
68.5	68.5
68.2	68.2
67.9	67.9
67.6	67.6
67.3	67.3
67.0	67.0
66.7	66.7
66.4	66.4
66.1	66.1
65.8	65.8
65.5	65.5
65.2	65.2
64.9	64.9
64.6	64.6
64.3	64.3
64.0	64.0
63.7	63.7
63.4	63.4
63.1	63.1
62.8	62.8
62.5	62.5
62.2	62.2
61.9	61.9
61.6	61.6
61.3	61.3
61.0	61.0
60.7	60.7
60.4	60.4
60.1	60.1
59.8	59.8
59.5	59.5
59.2	59.2
58.9	58.9
58.6	58.6
58.3	58.3
58.0	58.0
57.7	57.7
57.4	57.4
57.1	57.1
56.8	56.8
56.5	56.5
56.2	56.2
55.9	55.9
55.6	55.6
55.3	55.3
55.0	55.0
54.7	54.7
54.4	54.4
54.1	54.1
53.8	53.8
53.5	53.5
53.2	53.2
52.9	52.9
52.6	52.6
52.3	52.3
52.0	52.0
51.7	51.7
51.4	51.4
51.1	51.1
50.8	50.8
50.5	50.5
50.2	50.2
49.9	49.9
49.6	49.6
49.3	49.3
49.0	49.0
48.7	48.7
48.4	48.4
48.1	48.1
47.8	47.8
47.5	47.5
47.2	47.2
46.9	46.9
46.6	46.6
46.3	46.3
46.0	46.0
45.7	45.7
45.4	45.4
45.1	45.1
44.8	44.8
44.5	44.5
44.2	44.2
43.9	43.9
43.6	43.6
43.3	43.3
43.0	43.0
42.7	42.7
42.4	42.4
42.1	42.1
41.8	41.8
41.5	41.5
41.2	41.2
40.9	40.9
40.6	40.6
40.3	40.3
40.0	40.0
39.7	39.7
39.4	39.4
39.1	39.1
38.8	38.8
38.5	38.5
38.2	38.2
37.9	37.9
37.6	37.6
37.3	37.3
37.0	37.0
36.7	36.7
36.4	36.4
36.1	36.1
35.8	35.8
35.5	35.5
35.2	35.2
34.9	34.9
34.6	34.6
34.3	34.3
34.0	34.0
33.7	33.7
33.4	33.4
33.1	33.1
32.8	32.8
32.5	32.5
32.2	32.2
31.9	31.9
31.6	31.6
31.3	31.3
31.0	31.0
30.7	30.7
30.4	30.4
30.1	30.1
29.8	29.8
29.5	29.5
29.2	29.2
28.9	28.9
28.6	28.6
28.3	28.3
28.0	28.0
27.7	27.7
27.4	27.4
27.1	27.1
26.8	26.8
26.5	26.5
26.2	26.2
25.9	25.9
25.6	25.6
25.3	25.3
25.0	25.0
24.7	24.7
24.4	24.4
24.1	24.1
23.8	23.8
23.5	23.5
23.2	23.2
22.9	22.9
22.6	22.6
22.3	22.3
22.0	22.0
21.7	21.7
21.4	21.4
21.1	21.1
20.8	20.8
20.5	20.5
20.2	20.2
19.9	19.9
19.6	19.6
19.3	19.3
19.0	19.0
18.7	18.7
18.4	18.4
18.1	18.1
17.8	17.8
17.5	17.5
17.2	17.2
16.9	16.9
16.6	16.6
16.3	16.3
16.0	16.0
15.7	15.7
15.4	15.4
15.1	15.1
14.8	14.8
14.5	14.5
14.2	14.2
13.9	13.9
13.6	13.6
13.3	13.3
13.0	13.0
12.7	12.7
12.4	12.4
12.1	12.1
11.8	11.8
11.5	11.5
11.2	11.2
10.9	10.9
10.6	10.6
10.3	10.3
10.0	10.0
9.7	9.7
9.4	9.4
9.1	9.1
8.8	8.8
8.5	8.5
8.2	8.2
7.9	7.9
7.6	7.6
7.3	7.3
7.0	7.0
6.7	6.7
6.4	6.4
6.1	6.1
5.8	5.8
5.5	5.5
5.2	5.2
4.9	4.9
4.6	4.6
4.3	4.3
4.0	4.0
3.7	3.7
3.4	3.4
3.1	3.1
2.8	2.8
2.5	2.5
2.2	2.2
1.9	1.9
1.6	1.6
1.3	1.3
1.0	1.0
0.7	0.7
0.4	0.4
0.1	0.1