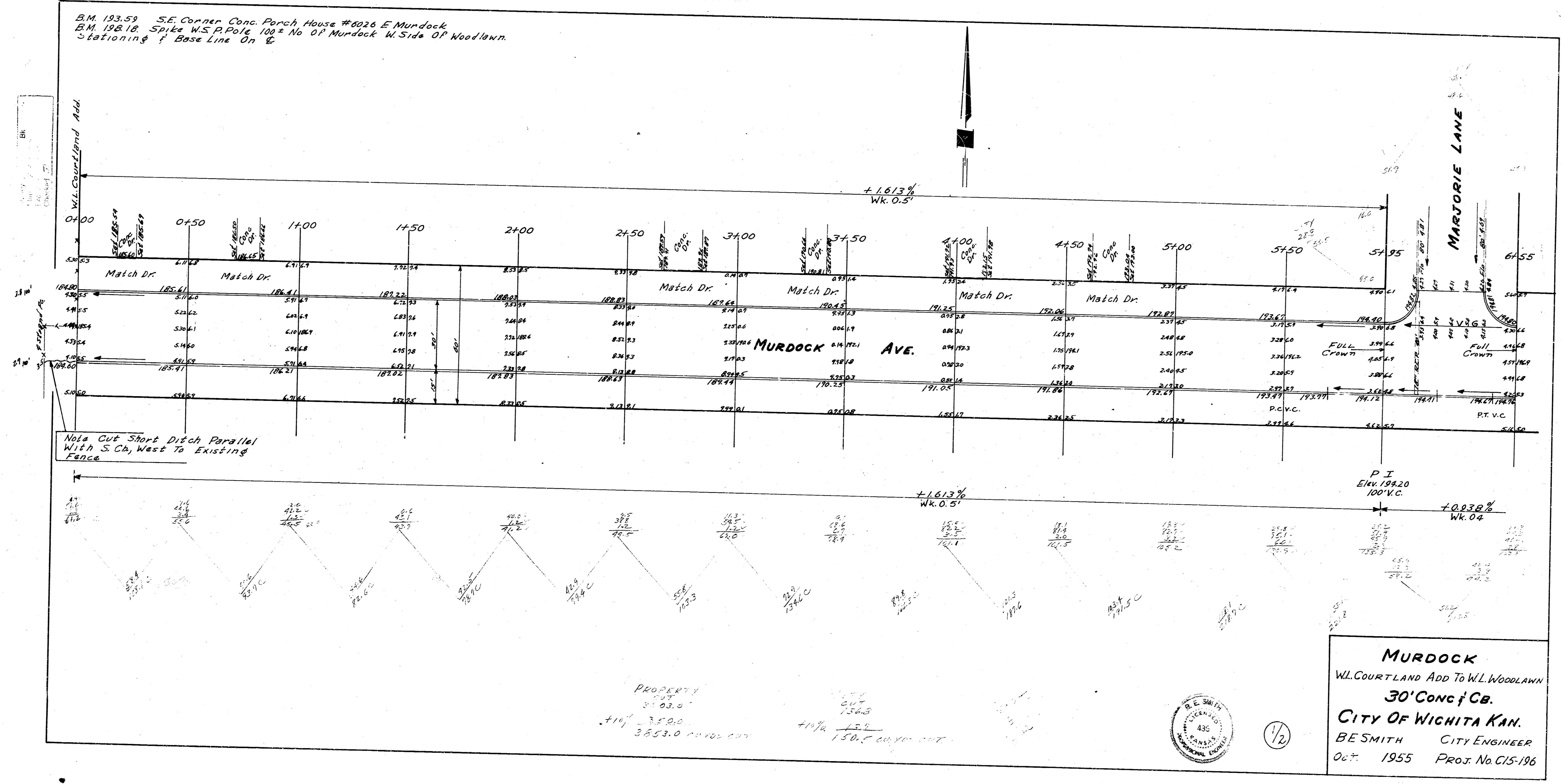


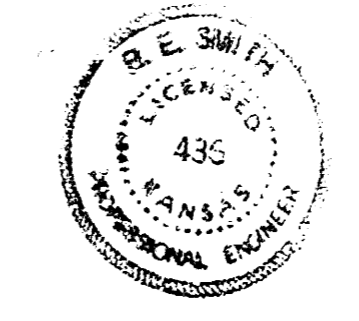
B.M. 193.59 S.E. Corner Conc. Porch House #8026 E Murdock  
 B.M. 198.18 Spike W.S.P. Pole 100' No of Murdock W. Side of Woodlawn.  
 Stationing of Base Line On  $\frac{1}{2}$



Note Cut Short Ditch Parallel With S. Ch. West To Existing Fence

PROPERTY  
 3' 03.0"  
 +10' = 35.00  
 3853.0

CUT  
 150.5' CONCR. CURB  
 +11% = 15.4'



1/2

**MURDOCK**  
 W.L. COURT LAND ADD TO W.L. WOODLAWN  
 30' CONC & CB.  
**CITY OF WICHITA KAN.**  
 BE SMITH CITY ENGINEER  
 Oct. 1955 PROJ. No. C15-196

