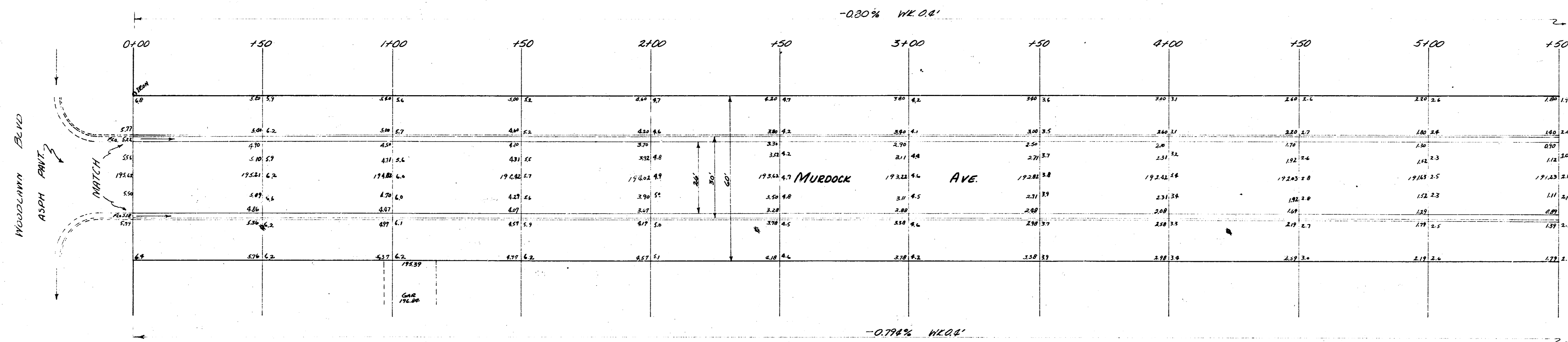
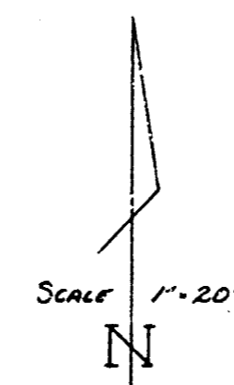


BM 198.18 Spike W.S.P.P. W.S. Woodlawn E. N.E. Murdock
 BM 188.75 Spike W.S.P.P. S.S. Claytoma E. E.S. Murdock

Sta. on S.E.



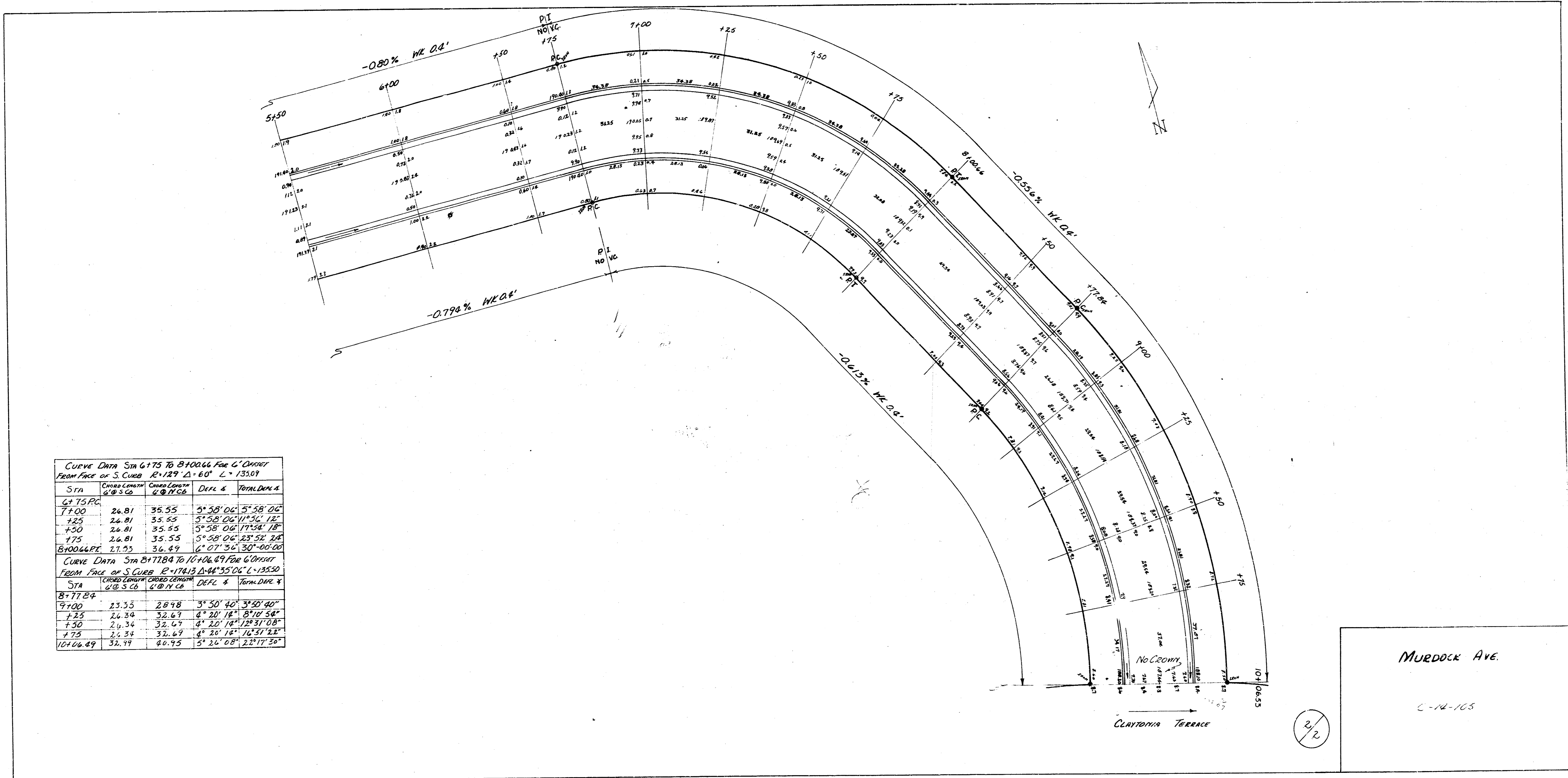
Surveyed by
 P. H. Smith
 Checked by
 J. J.

WOODLAWN BLVD
 ASPH. PAVT.
 MATCH

MURDOCK AVE
 EL. WOODLAWN TO 1/4 CLAYTOMA TERRACE
 2.6-2-30 AC.
 CITY OF WICHITA KANSAS
 B.E. SMITH City Engineer
 Jan 1955 Proj. No. C-14-105



1/2



CURVE DATA Sta 6175 To 8100.66 For 6' Offset
FROM FACE OF S. CURB R=129' Δ=60° L=135.09

Sta	CHORD LENGTH @ 5' Ch	CHORD LENGTH @ 10' Ch	DEF. Δ	TOTAL DEF. Δ
6175 PC				
7100	26.81	35.55	5° 58' 00"	5° 58' 00"
725	26.81	35.55	5° 58' 00"	11° 56' 12"
750	26.81	35.55	5° 58' 00"	17° 54' 12"
775	26.81	35.55	5° 58' 00"	23° 52' 24"
8100.66 PT	27.53	36.89	6° 07' 30"	30° 00' 00"

CURVE DATA Sta 8118.4 To 10110.49 For 6' Offset
FROM FACE OF S. CURB R=174.13 Δ=44° 35' 06" L=135.50

Sta	CHORD LENGTH @ 5' Ch	CHORD LENGTH @ 10' Ch	DEF. Δ	TOTAL DEF. Δ
8118.4				
9100	23.53	28.48	3° 50' 40"	3° 50' 40"
925	26.34	32.67	4° 20' 18"	8° 10' 58"
950	26.34	32.67	4° 20' 18"	12° 31' 16"
975	26.34	32.67	4° 20' 18"	16° 51' 34"
10110.49	32.49	40.93	5° 36' 08"	22° 17' 30"

MURDOCK AVE.
C-14-105

2/2

3 11 1 20