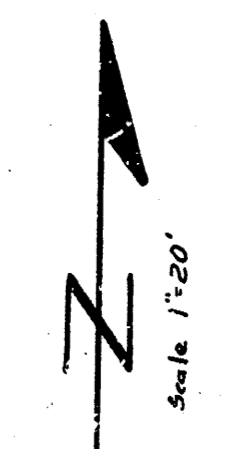
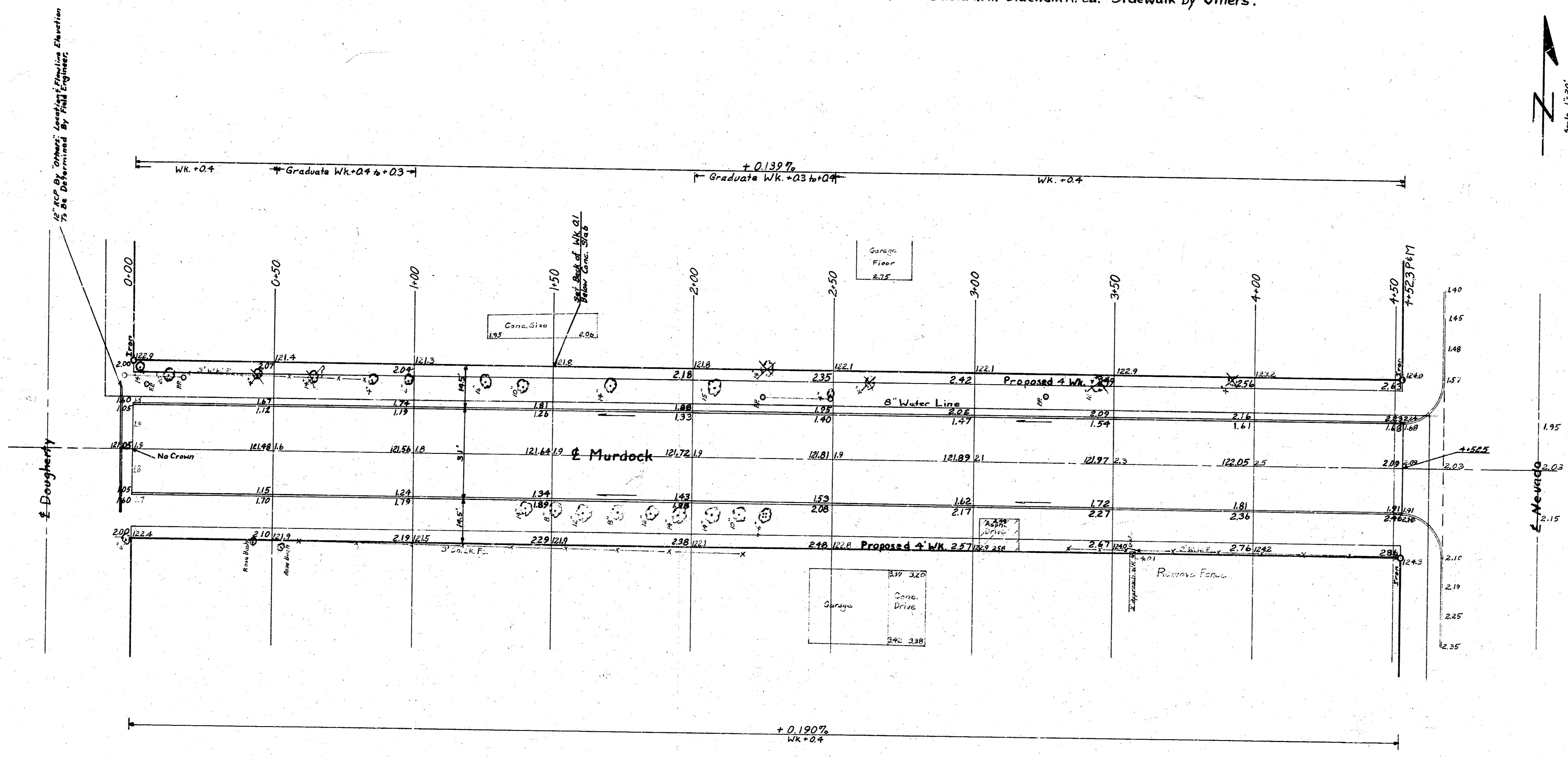


BM 122.11 'C' in Globe W. Ch. Nevada 4' N. of M.L. Murdock W.
 BM 123.73 'N' of S.E. Cor. Conc. Forch 115' N. of Murdock & W.S. Nevada.

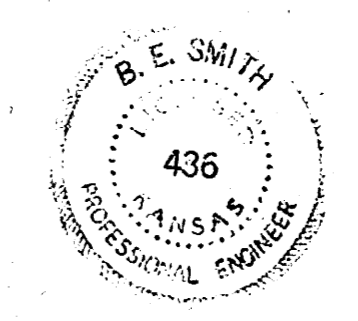
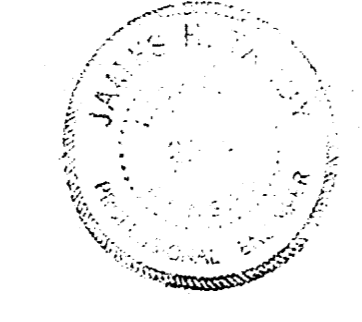
Grade Parking & Clear Right-of-Way for Proposed Sidewalk. Compact
 Backfill in Sidewalk Area. Sidewalk by 'Others'.

Survey Rings
 Plan Laurson
 Exc. Laurson
 3/28/83



Excavation
 58361.11 = 642.0 cy

Compacted Fill
 CF 974.11 = 10.7 c.y.
 SG.M. 27654.11 = 304.2 c.y.
 Total = 314.9 c.y.



Murdock
 E.L. Dougherty to W.L. Nevada
 Concrete 30" Curb
 City of Wichita
 B.E. Smith City Engineer
 Date April 1970 Proj. No. C19-83