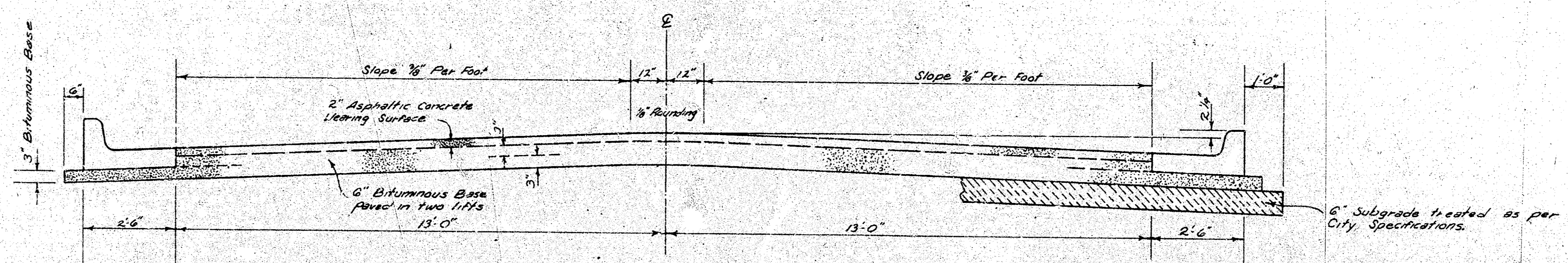


**NORFOLK CIRCLE**  
**E.L. POSTOAK ROAD To and including Cul-De-Sac**



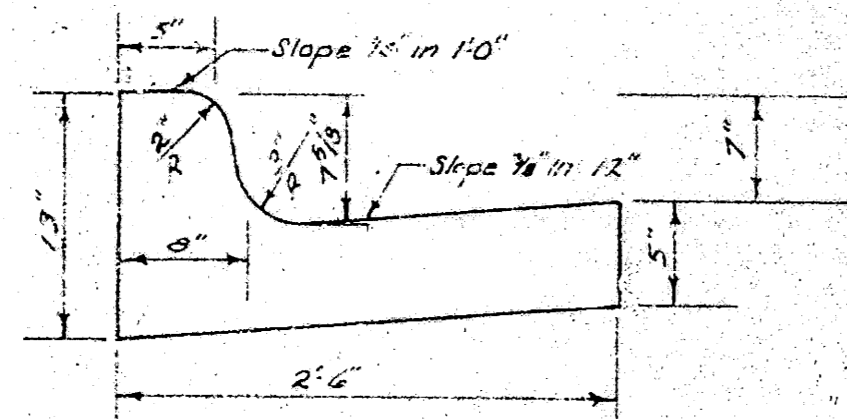
**TYPICAL SECTION**

**3' ASPHALTIC CONCRETE PAVEMENT WITH BITUMINOUS BASE**

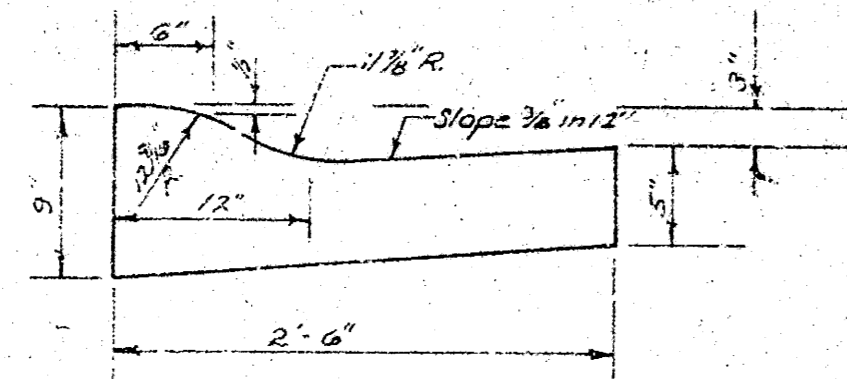
A TACK COAT OF EMULSIFIED ASPHALT (SS-1H) SHALL BE APPLIED AT AN APPROXIMATE RATE OF 0.05 GALLONS PER SQ. YD. BETWEEN LIFTS OF ASPHALTIC MATERIALS WHEN ORDERED BY THE ENGINEER. TACK COAT WILL NOT BE PAID FOR DIRECTLY AND SHALL BE CONSIDERED AS SUBSIDIARY TO PRICE BID FOR ASPHALTIC PAVEMENT. BITUMINOUS BASE AND ASPHALTIC CONCRETE WEARING SURFACE SHALL BE PLACED WITH A LAYDOWN MACHINE HAVING AUTOMATIC ELECTRONIC CONTROLS FOR CROWN AND GRADE. CONSTRUCTION JOINTS IN EACH LIFT SHALL BE STAGGERED A MINIMUM DISTANCE OF 1' WITH JOINTS IN PRECEDING LIFTS AND SUCH THAT A JOINT WILL BE CONSTRUCTED ON THE PAVEMENT CENTERLINE IN THE TOP LIFT.

*The A.C. pavement between the Comb. Curb & Gutter shall be paid as 3 1/2" A.C. Pavement (6" Bituminous Base). The Bituminous Base under the Comb. Curb & Gutter shall be paid as 3 1/2" Bituminous Base.*

**COMBINED CURB & GUTTER**



**ROLL TYPE CURB & GUTTER**



**CITY OF WICHITA, KANSAS**

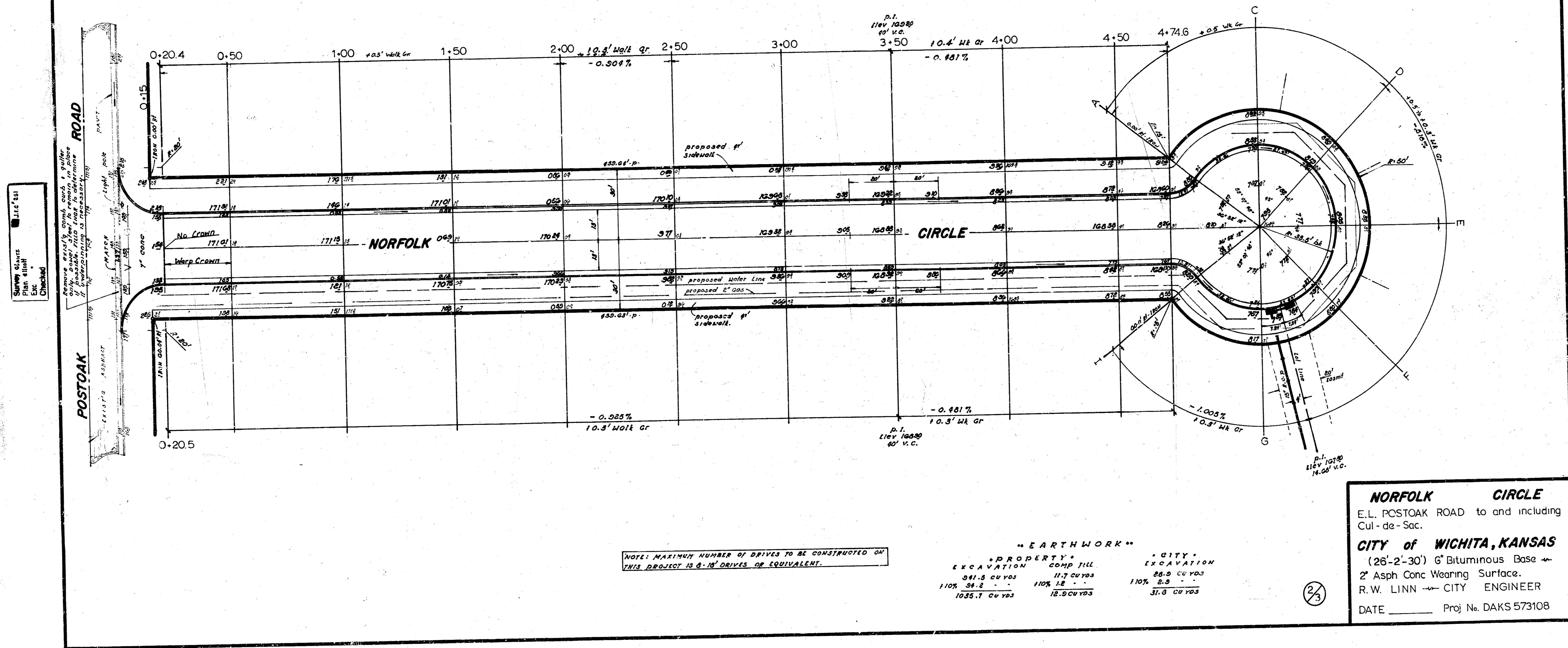
DEPARTMENT OF PUBLIC WORKS — ENGINEERING

R. W. LINN CITY ENGINEER

DATE: \_\_\_\_\_ PROJ. NO. DAKS 573108

1/3

B.M. 1815<sup>8</sup> CITY STANDARD @ ARMOUR and CENTRAL.  
 B.M. 174<sup>8</sup> N.E. corner conc porch No # 251 POSTOAK ROAD.  
 B.M. 103<sup>8</sup> S.E. cor conc step on the back side of No # 210 PENROSE.



Survey done  
 by  
 E.L. Linn  
 Checked  
 by  
 R.W. Linn

Remove existing curb and sidewalk  
 and replace with 12" concrete curb  
 and 18" concrete sidewalk  
 to match existing

NOTE: MAXIMUM NUMBER OF DRIVES TO BE CONSTRUCTED ON  
 THIS PROJECT IS 8-18" DRIVES OR EQUIVALENT.

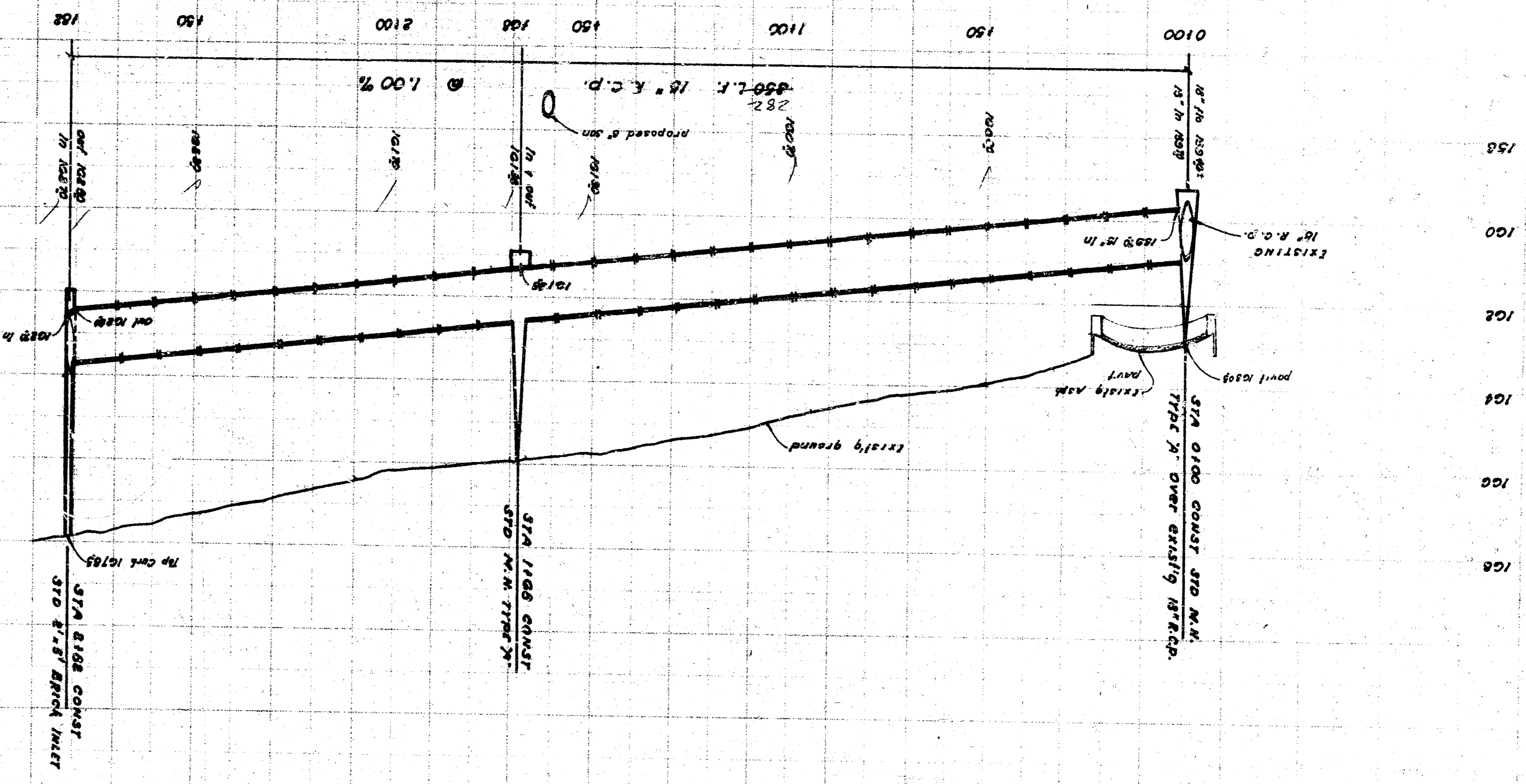
"EARTHWORK"

PROPERTY	CITY
EXCAVATION	EXCAVATION
110% 381.5 CU YDS	110% 28.9 CU YDS
1035.1 CU YDS	31.3 CU YDS
COMPO FILL	
110% 117 CU YDS	110% 8.9 CU YDS
12.9 CU YDS	31.3 CU YDS

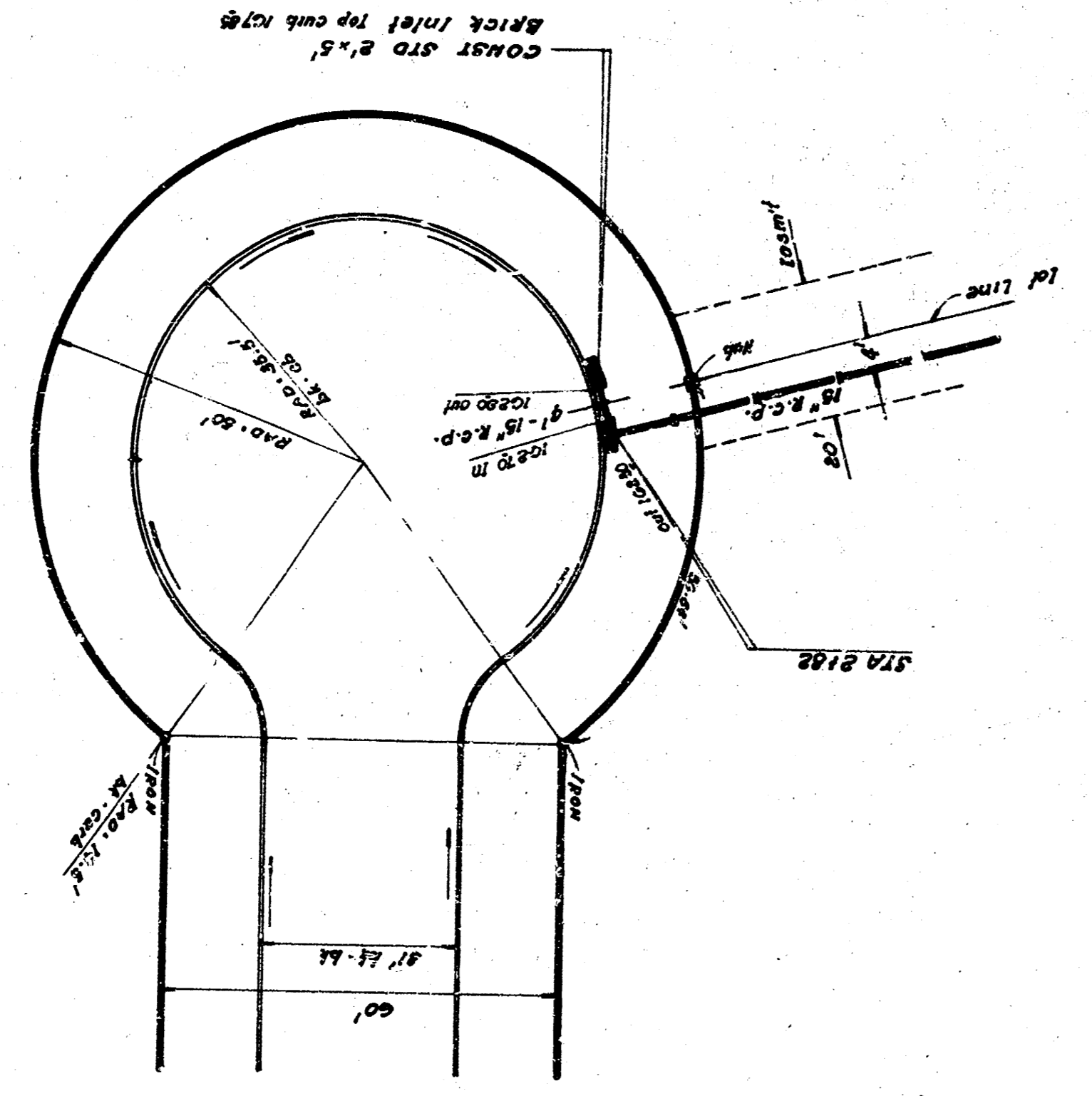
**NORFOLK CIRCLE**  
 E.L. POSTOAK ROAD to and including  
 Cul-de-Sac.  
**CITY of WICHITA, KANSAS**  
 (26'-2'-30') 6" Bituminous Base +  
 2" Asph Conc Wearing Surface.  
 R.W. LINN - CITY ENGINEER  
 DATE \_\_\_\_\_ Proj No. DAKS 573108

2/3

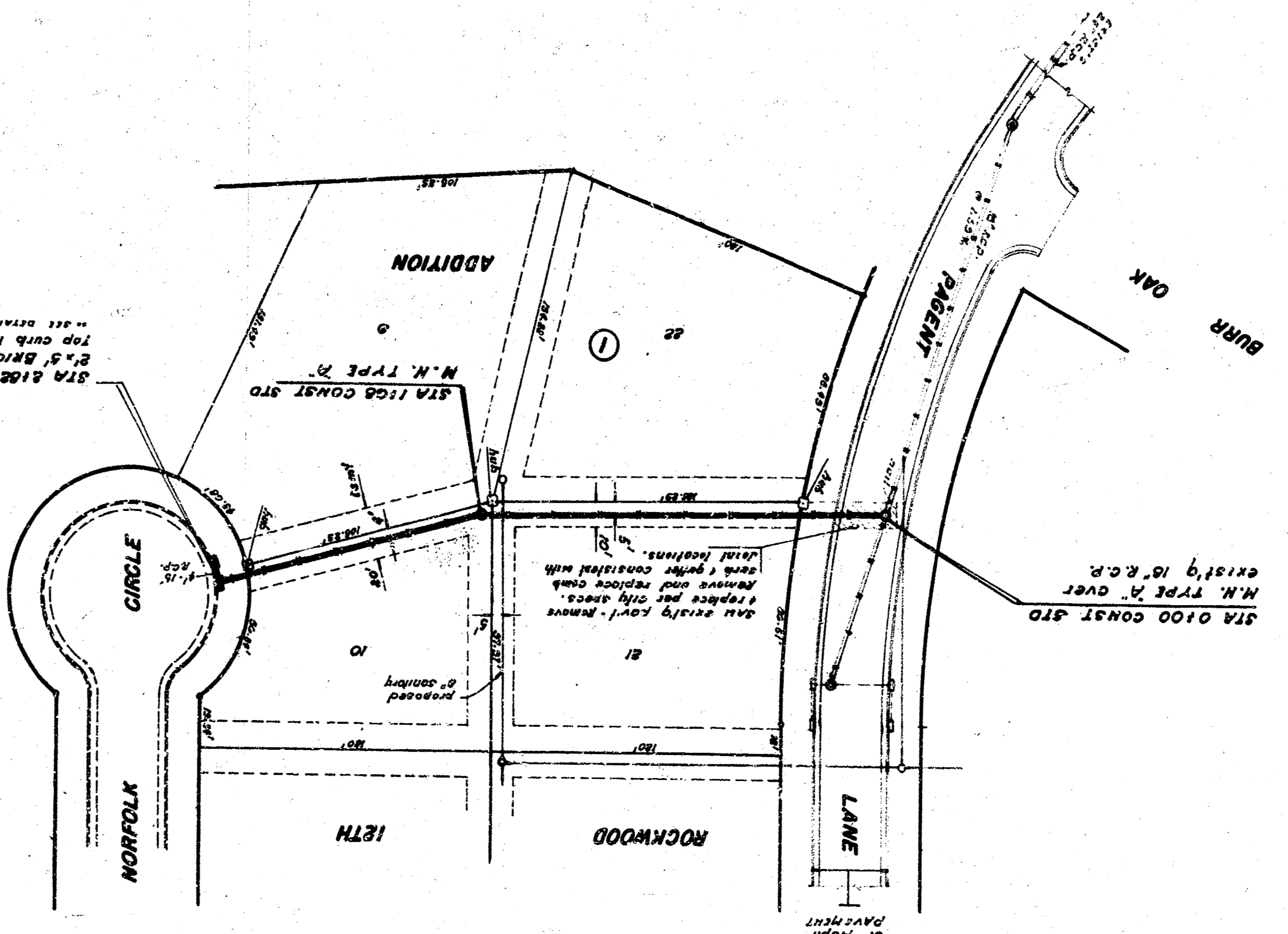
"DRAINAGE" in connection with paving  
 NORFOLK CIRCLE - E.L. Postock Rd  
 to and including Cui-De-Sac.  
 CITY of WICHITA, KANSAS  
 R.W. LINN  
 City Engineer  
 Proj No. WAKD573108  
 Date



PLAN SCALE 1" = 40'  
 PROFILE 1" = 2' VERT



A.M. 1254 N.E. corner conc. porch at 1st Postock Rd  
 S.L. 109 1/2 S.L. cor conc. step on the back side of 16" 240 postock.



PLAN SCALE 1" = 40'