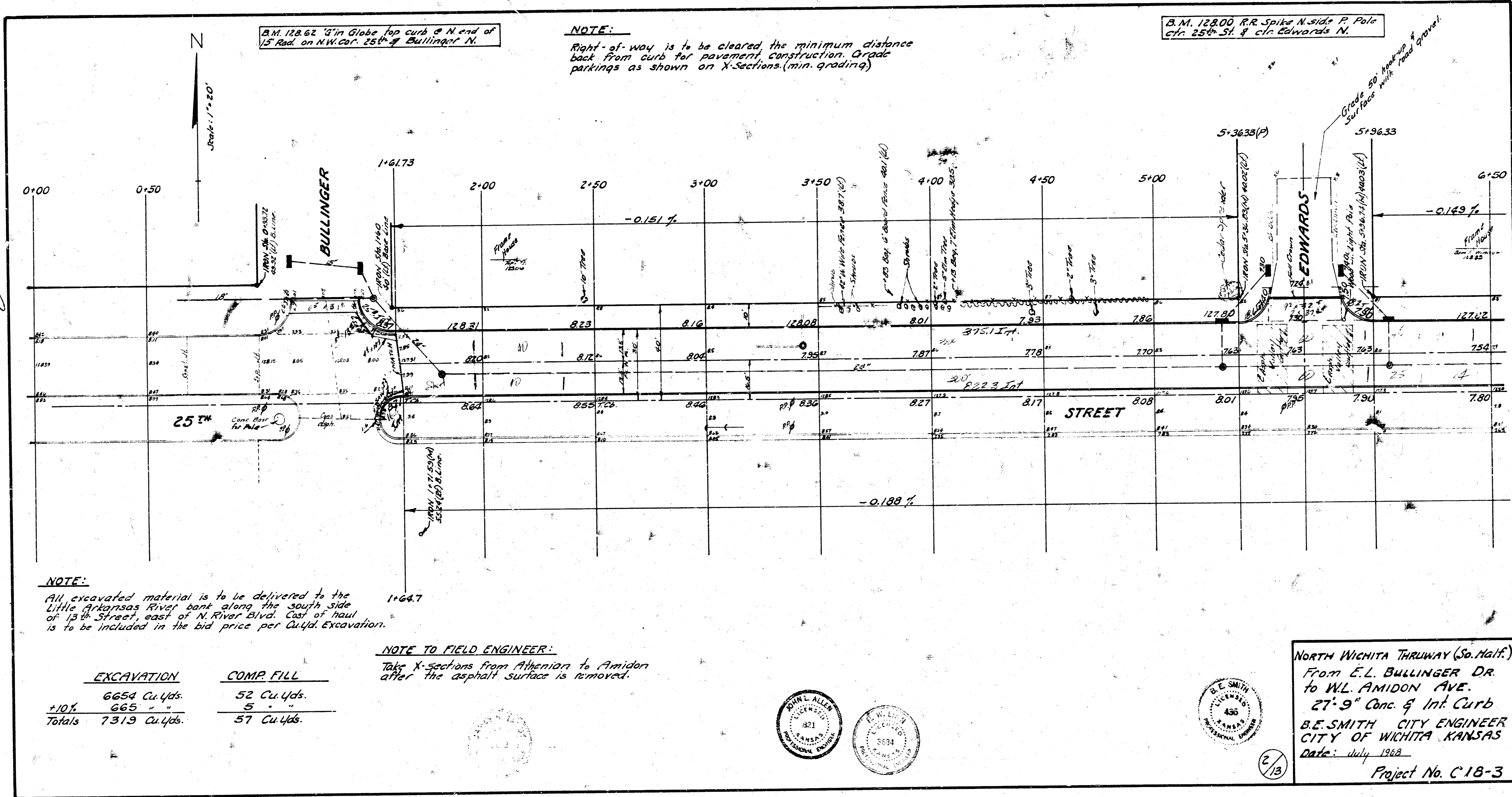


Survey
J.G.G.
J.L.P.
L.M.H.
Checked
J.G.G.



B.M. 128.62 7' in Globe for curb @ N end of 15' Rad. on NW cor. 25th & Bullinger N.

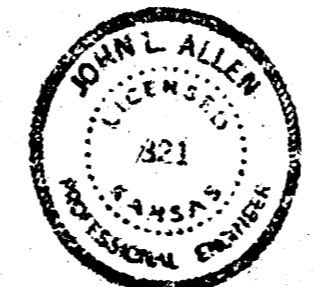
NOTE:
Right-of-way is to be cleared the minimum distance back from curb for pavement construction. Grade parkings as shown on X-sections. (min. grading)

B.M. 128.00 R.R. Spike N. side P. Pole c/n 25th St. & c/n Edwards N.

NOTE:
All excavated material is to be delivered to the Little Arkansas River bank along the south side of 13th Street, east of N. River Blvd. Cost of haul is to be included in the bid price per Cu.Yd. Excavation.

NOTE TO FIELD ENGINEER:
Take X-sections from Athenion to Amidon after the asphalt surface is removed.

	EXCAVATION	COMP. FILL
+10%	6654 Cu.Yds.	52 Cu.Yds.
	665 "	5 "
Totals	7319 Cu.Yds.	57 Cu.Yds.

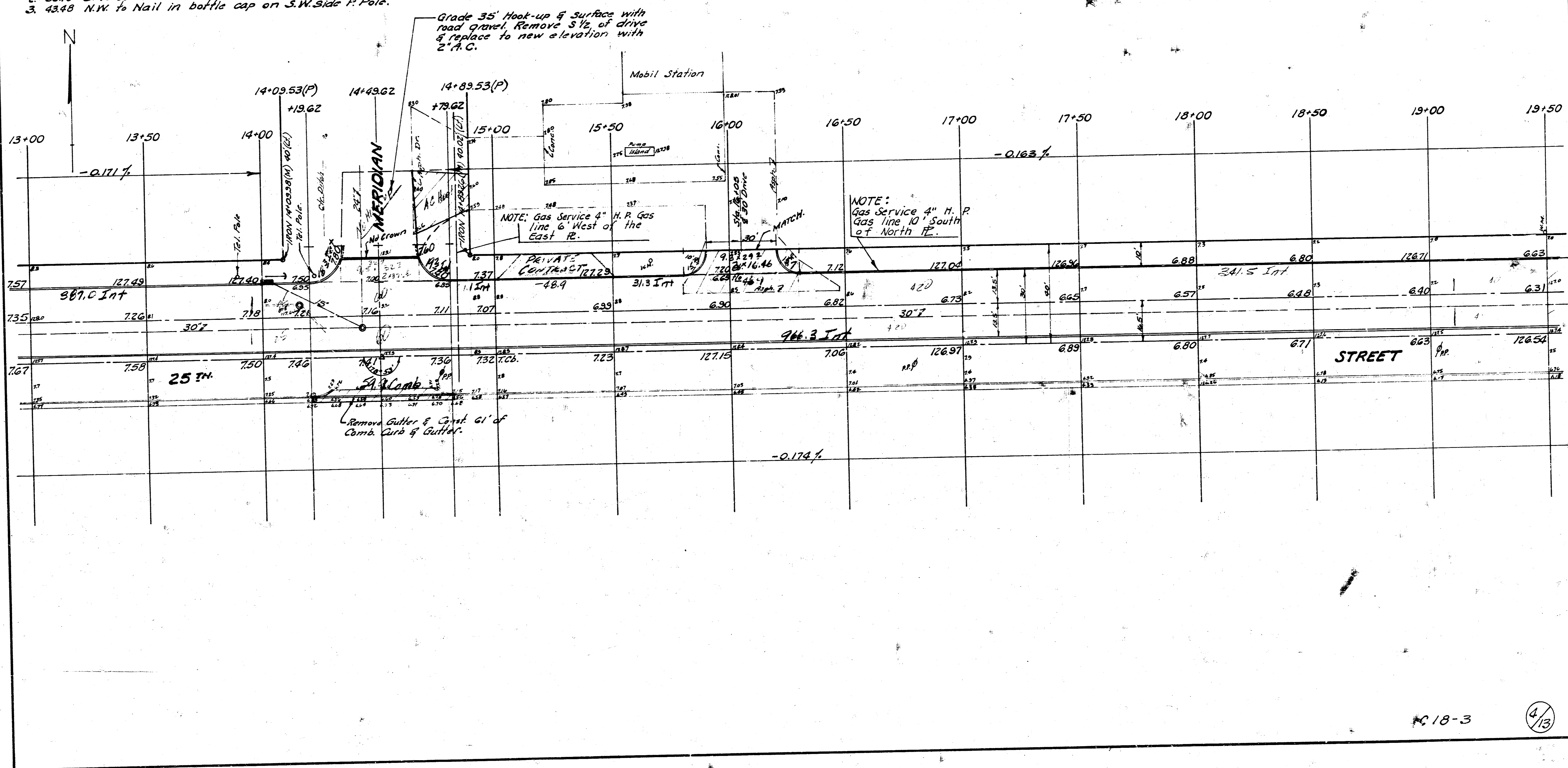


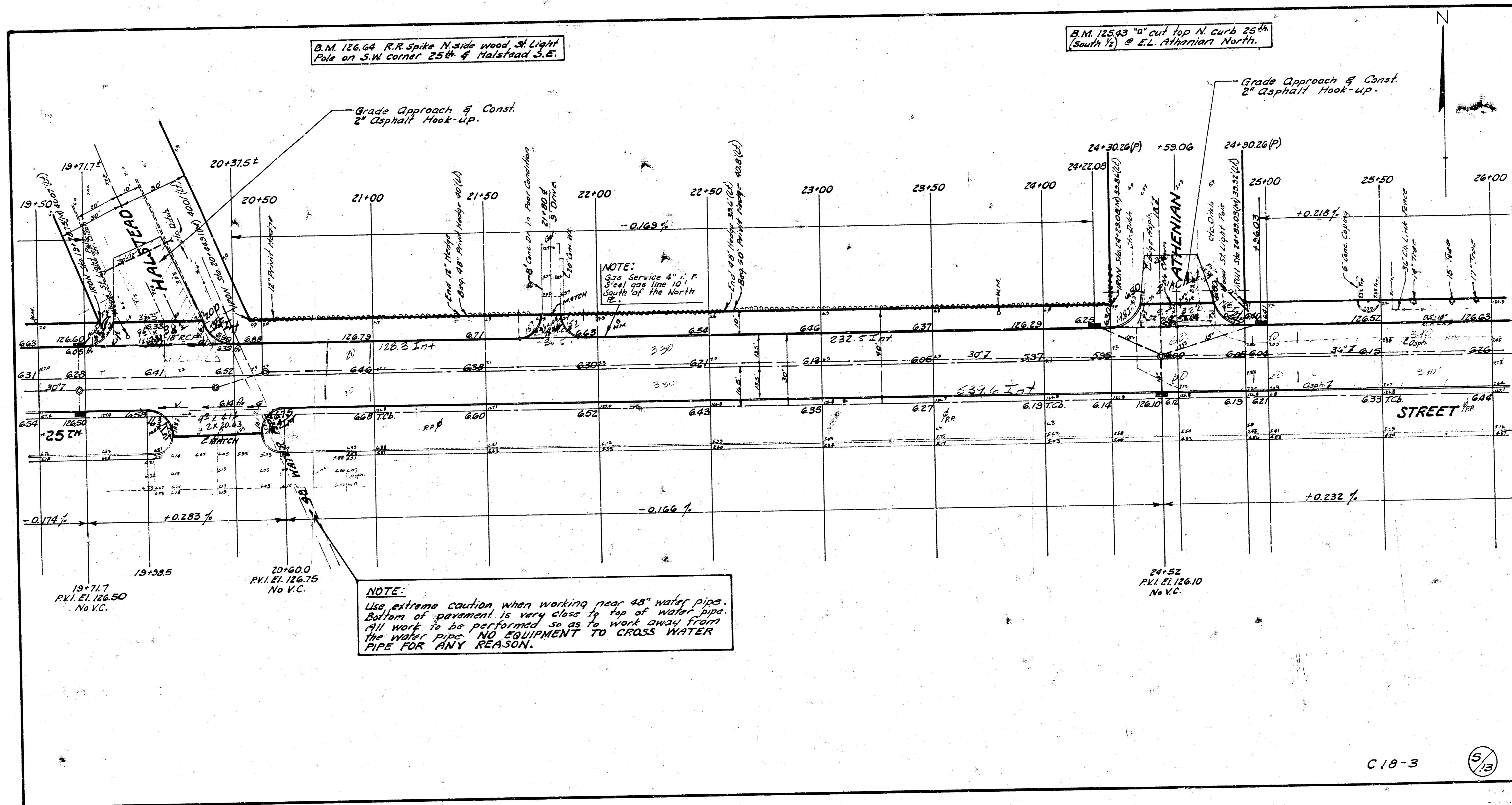
NORTH WICHITA THRUWAY (So. Half)
From E.L. BULLINGER DR.
to WL. AMIDON AVE.
27'-9" Conc. & Int. Curb
B.E. SMITH CITY ENGINEER
CITY OF WICHITA, KANSAS
Date: July 1968
Project No. C-18-3

C/13

REFERENCE POINTS to 'X' on ctr. of Stone Sta. 14+50.47(N) & 25th & Meridian
 1. 26.71' E.S.E. to Nail in bottle cap on S.W. side P. Pole.
 2. 58.18' S. to Lat. Corner Iron on S.L. 25th Street.
 3. 43.48' N.W. to Nail in bottle cap on S.W. side P. Pole.

D.M. 128.21 Top 1' Bolt on S.W. Corner Mobil Sign Base @ N.E. cor. 25th & Meridian N.





B.M. 126.64 R.R. Spike N. side wood, St. Light Pole on S.W. corner 25th & Halstead S.E.

B.M. 125.93 "a" cut top N. curb 25th (South 1/2) & E.L. Athenian North.

NOTE:
3" Service 4" P.
3" Gal. 60" line 10'
South of the North

NOTE:
Use extreme caution when working near 48" water pipe. Bottom of pavement is very close to top of water pipe. All work to be performed so as to work away from the water pipe. NO EQUIPMENT TO CROSS WATER PIPE FOR ANY REASON.

