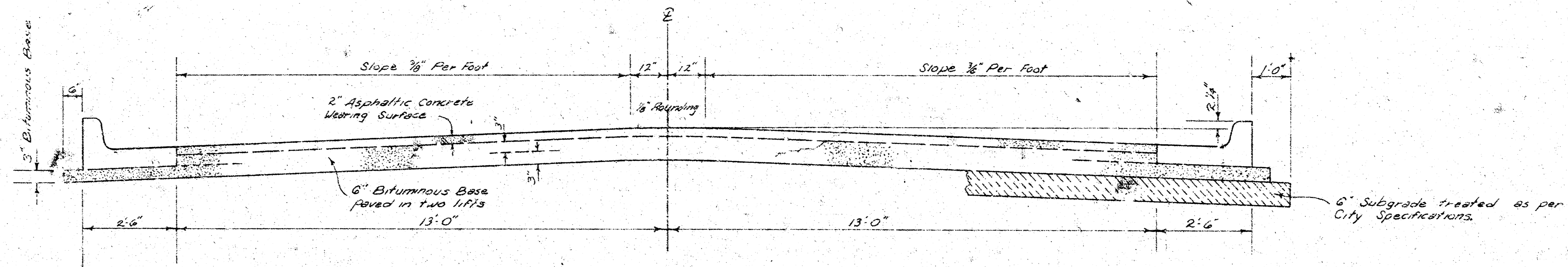


NORTHWEST PARKWAY  
N.L. OF 13TH ST TO N.L. OF TIMOTHY LN.



TYPICAL SECTION

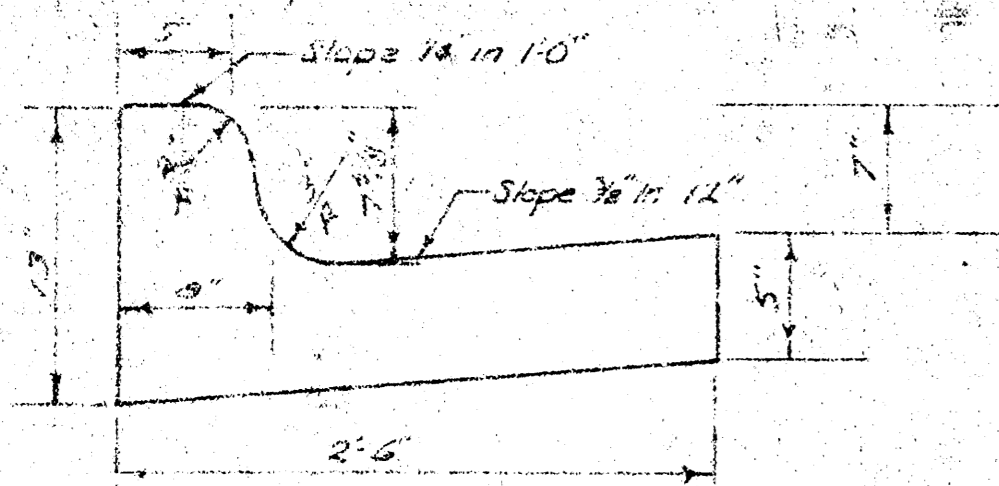
3' ASPHALTIC CONCRETE PAVEMENT WITH BITUMINOUS BASE

A TACK COAT OF EMULSIFIED ASPHALT (SS-1H) SHALL BE APPLIED AT AN APPROXIMATE RATE OF 0.05 GALLONS PER SQ. YD. BETWEEN LIFTS OF ASPHALTIC MATERIALS WHEN ORDERED BY THE ENGINEER. TACK COAT WILL NOT BE PAID FOR DIRECTLY AND SHALL BE CONSIDERED AS SUBSIDIARY TO PRICE BID FOR ASPHALTIC PAVEMENT.

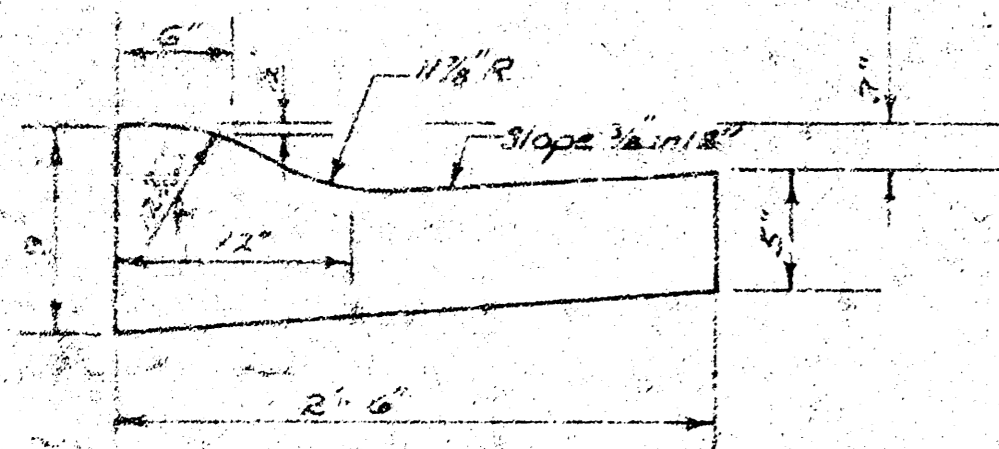
BITUMINOUS BASE AND ASPHALTIC CONCRETE WEARING SURFACE SHALL BE PLACED WITH A LAYDOWN MACHINE HAVING AUTOMATIC ELECTRONIC CONTROLS FOR CROWN AND GRADE. CONSTRUCTION JOINTS IN EACH LIFT SHALL BE STAGGERED A MINIMUM DISTANCE OF 1' WITH JOINTS IN PRECEDING LIFTS AND SUCH THAT A JOINT WILL BE CONSTRUCTED ON THE PAVEMENT CENTERLINE IN THE TOP LIFT.

The A.C. pavement between the Comb Curb & gutter shall be paid as 3' Asphaltic Concrete (6" Bituminous Base). The Bituminous Base under the Comb Curb & gutter shall be paid as 3' Bituminous Base.

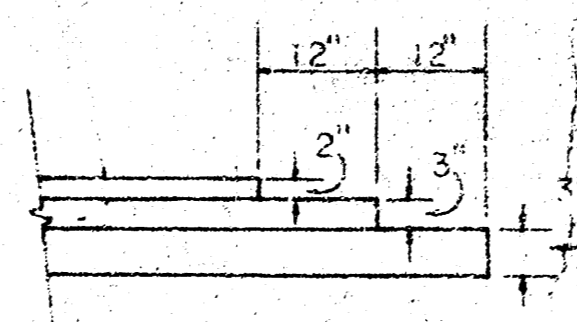
COMBINED CURB & GUTTER



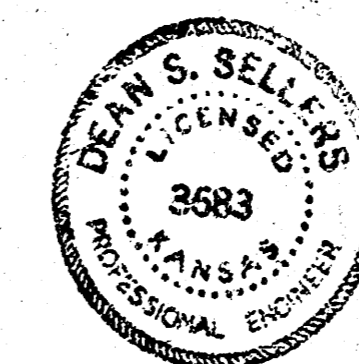
ROLL TYPE CURB & GUTTER



DETAIL OF TRANSVERSE CONSTRUCTION JOINTS



TRANSVERSE CONSTRUCTION JOINTS SHALL BE CONSTRUCTED IN FLEXIBLE BASE PAVEMENTS AT LOCATIONS WHERE PAVEMENT TEMPORARILY ENDS TO FACILITATE FUTURE PAVEMENT CONSTRUCTION AS SHOWN BY DETAIL. THE COST OF CONSTRUCTING THE TRANSVERSE CONSTRUCTION JOINTS SHALL NOT BE MEASURED OR PAID FOR DIRECTLY BUT SHALL BE INCLUDED IN THE BID PRICE FOR SQUARE YARDS OF ASPHALTIC CONCRETE PAVEMENT.



CITY OF WICHITA, KANSAS

DEPARTMENT OF PUBLIC WORKS — ENGINEERING

R. W. LINN CITY ENGINEER

DATE: June, 76 PROJ. NO. DWS 575091

P. 1 of 7

FILMED FROM THE BEST AVAILABLE COPY.....

B-M

B.M. 147.16 - WEST END OF RETURN, N.W. CORNER OF 13TH ST. & NORTHWEST PKWY.  
 B.M. 150.27 - WEST END OF RETURN, N.W. CORNER OF MORGANTOWN & NANTUCKET  
 BASE LINE = WEST PROJ. LINE / NORTHWEST PKWY.



$\Delta = 27^{\circ}10'$  R = 496.65' T = 120.00' L = 235.49' L.C. = 233.29'

CURVE DATA BASED ON  $\Delta$  at P.C. RAD.  $\Delta = 13^{\circ}34'$

STA	ARC	CHORD LENGTH		DEFLECTION	
		OFF L.C.B.	OFF P.C.B.	DEFLECTION	DEFLECTION
4+16.6				0°00'00"	0°00'00"
+50	33.90'	33.86'	30.96'	1°55'36"	1°55'36"
+75	25.00'	25.35'	27.66'	1°26'31"	3°22'07"
5+00				4°48'34"	
+25				6°15'10"	
+50				7°41'41"	
+75				9°08'13"	
6+00				10°34'44"	
+25				12°01'15"	
6+32.09	27.09'	27.47'	29.98'	1°33'47"	13°35'00"

EXCAVATION		EARTHWORK		PROPERTY	
+	10%	CITY	8560 C.Y.		3593.7 C.Y.
		TOTAL	856		359.4
			941.6 C.Y.		3953.1 C.Y.
COMPACTED FILL			0.9 C.Y.		28.6 C.Y.
	+10%		0.1		2.9 C.Y.
	TOTAL		0.7 C.Y.		31.5

NOTE:  
 'Paving Contractor' to Coordinate  
 work w/ 'Sewer Contractor'

NORTHWEST PARKWAY  
 N.L. 13 TH ST. to the N.L. of TIMOTHY LN.  
 PROJ. NO. DAKS 575091  
 Pg. 2 of 7

FILMED FROM THE BEST  
 AVAILABLE COPY.....

B-M

B.M. 149.83 □ W.END RETURN, N.W. CORNER, NORTHWEST PKWY. & MORGANTOWN AVE.

Scale: 1" = 30'

+0.2490 % Grade  
+0.7' Walk Grade

+0.520 % GRADE  
+0.7' WALK GRADE

+0.287 % GRADE  
+0.7' WALK GRADE

S+50

+75

6+00

+25

P.T.

6+52.09' P'  
6+52.60' W'

6+94.34' P'  
6+94.83' W'

7+54.34' P'  
7+54.83' W'

8+00

8+50

9+00

9+50

10+14.34' P'  
10+14.98' W'

11+00

11+50

NORTHWEST PARKWAY

BRUNSWICK AVENUE  
MORGANTOWN AVENUE

NOTE: Flow Line in Valley Gutters are 4.0' off the High Edge.

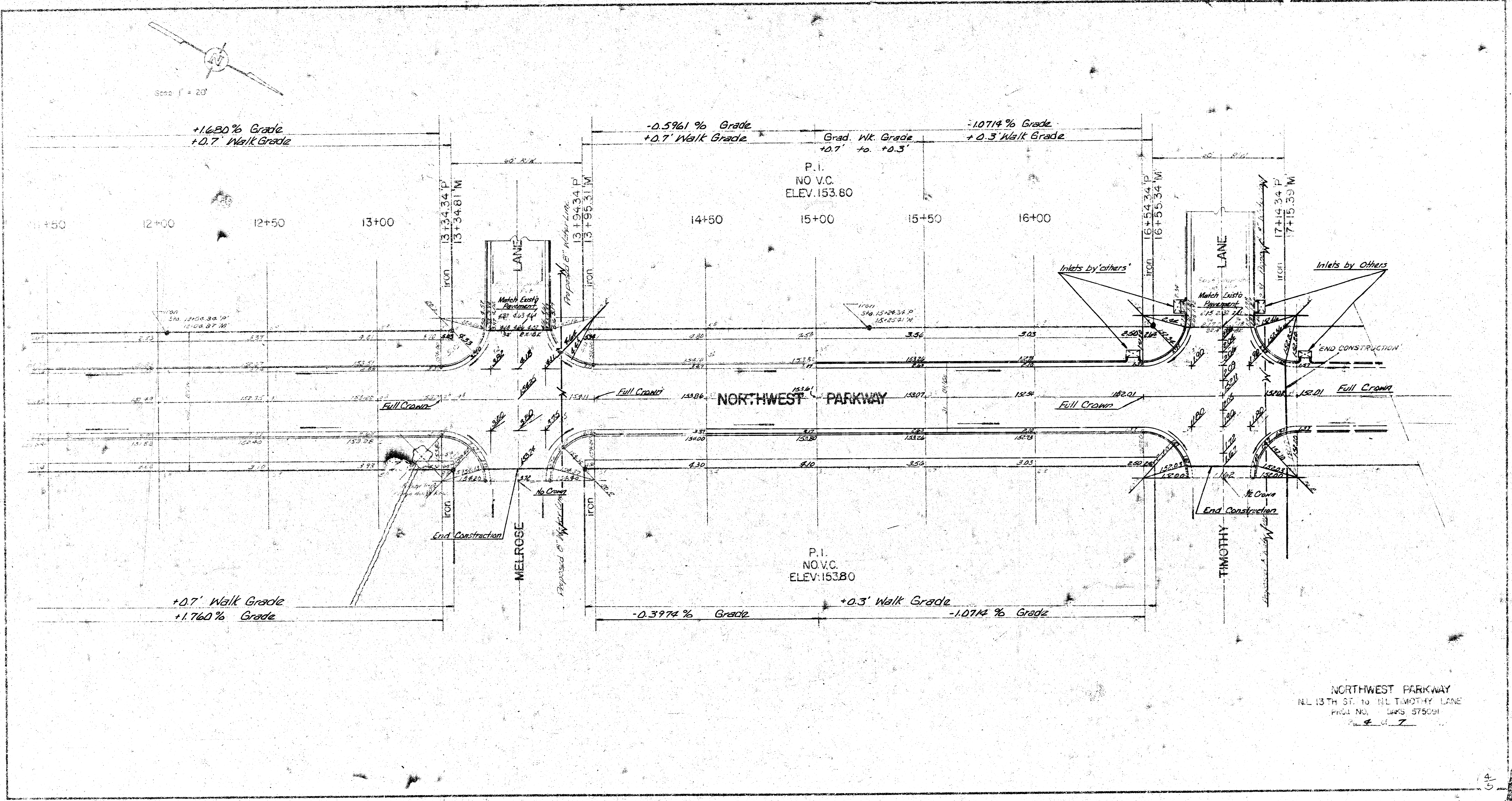
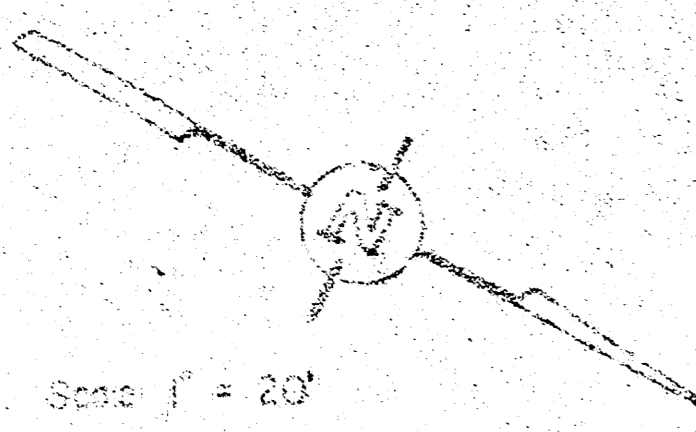
NOTE: Flow Line in Valley Gutters are 4.0' off the High Edge.

NORTHWEST PARKWAY  
N.L. of 13TH ST. to N.L. of TIMOTHY LN.  
PROJ. NO. DAKS 575091  
Pg. 2 of 7

3/5

FILMED FROM THE BEST AVAILABLE COPY.....

B-M

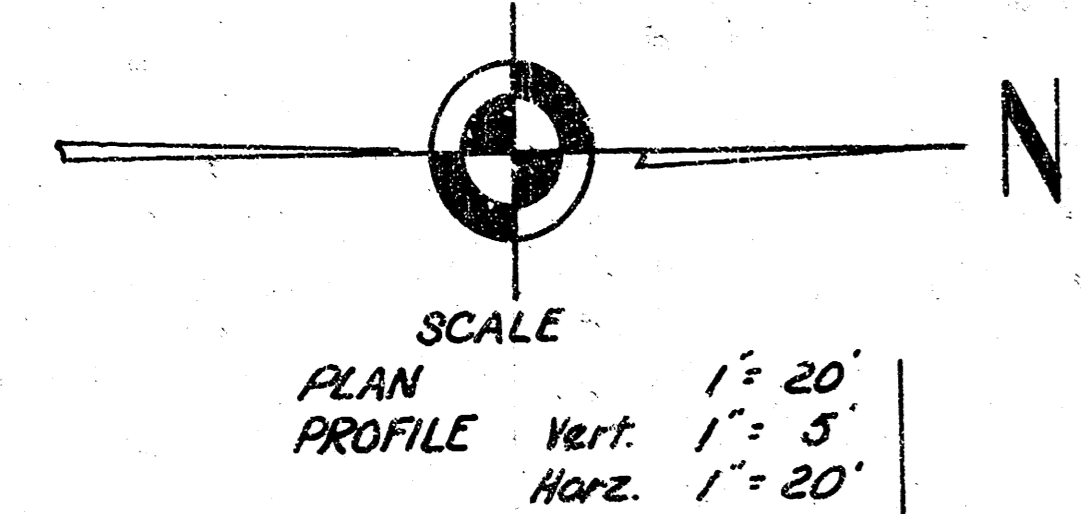


NORTHWEST PARKWAY  
NL 13TH ST. TO 111 TIMOTHY LANE  
PROJ. NO. DARS 575001  
SHEET 7

FILMED FROM THE BEST  
AVAILABLE COPY .....

B-M

B.M. 147.18 - 1' Top of Curb, W. end of Return N.W. Corner of 13 TH ST. & Northwest Parkway

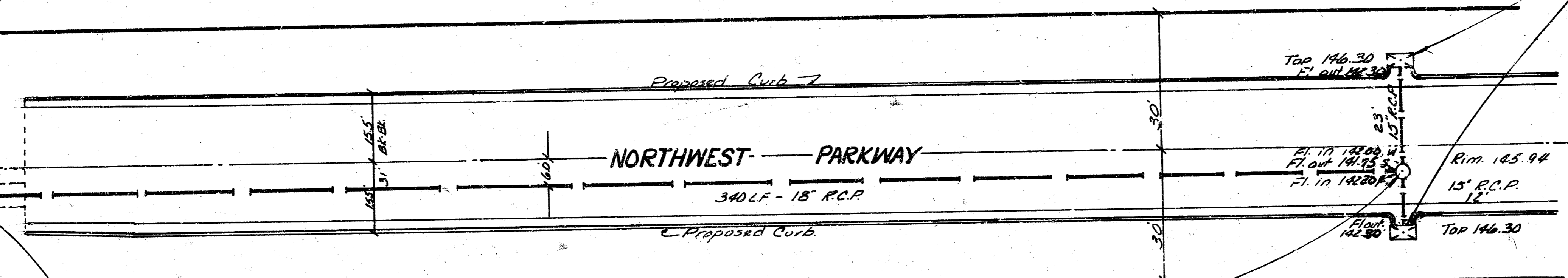


**CAUTION**  
**UNDERGROUND UTILITIES**  
Please check with K.G. & E. or Southwestern Bell Telephone Co. for Location

Sta. 0+05  
"Iron" N.W. Corner  
13 TH ST. & NW. PKWY

Sta. 3+40 = "Sta 3+35" on Paving Plans  
Const. Std. TYPE I-A Inlets (set deck location) Rim Elev. = 142.30, Flow out = 142.30

13 TH STREET

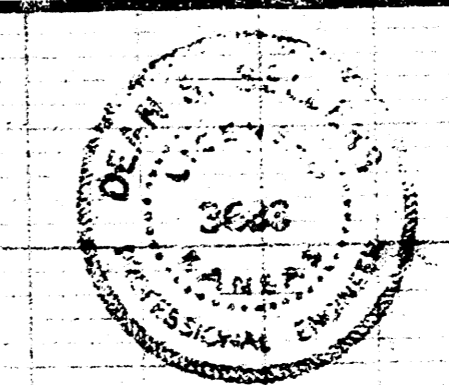
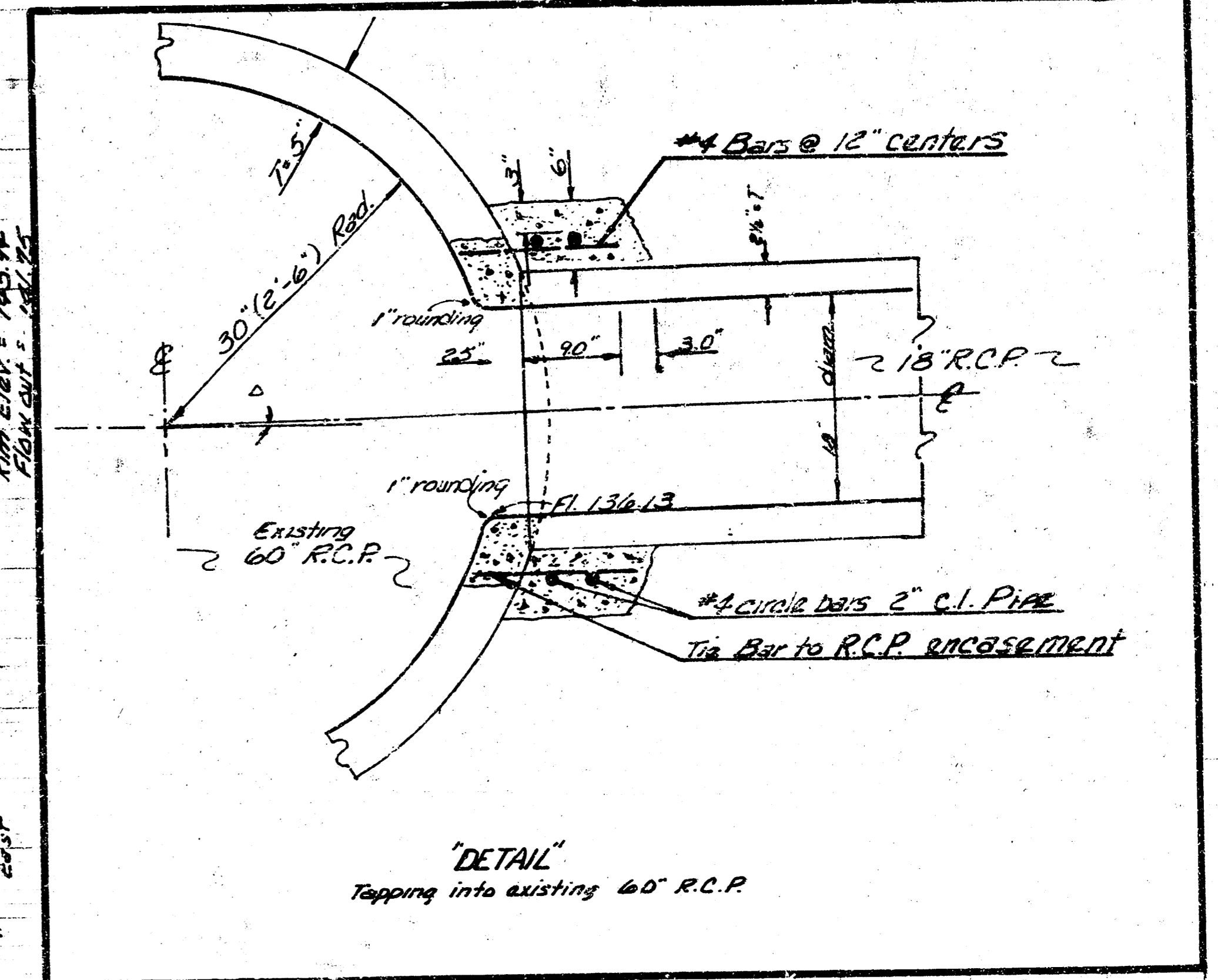
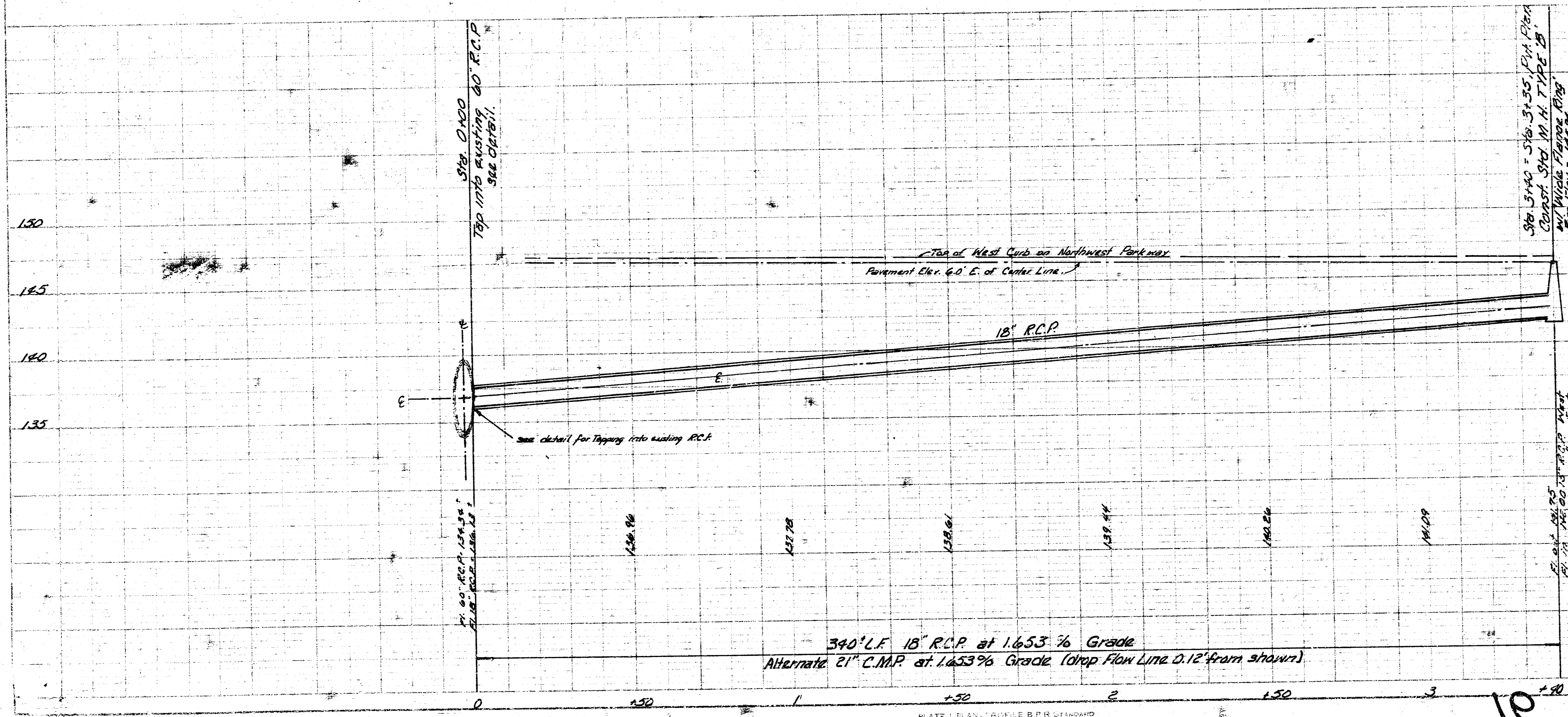


NOTE:  
Tapping into 60" R.C.P. shall be 'subsidiary' to other items of work.

Sta. 0+00  
Tap into existing 60" R.C.P.  
Flow in = 136.13, see details on Tapping

Sta. 3+40 = "Sta 3+35" on Paving Plan  
Const. Std. M.H. TYPE 'B', with 'Wide Flange Ring'. Rim Elev. = 145.94  
Flow out = 141.75 - (M.H. 6' D' E. of E.)

NOTE:  
Contractor to Coordinate 'Drainage Project' w/ Project for Paving N.W. Parkway.



**INCIDENTAL DRAINAGE**  
(in connection with Paving of Northwest Parkway)  
**CITY OF WICHITA, KANSAS**  
R.W. LINN CITY ENGINEER  
DATE: MAY 1976 PROJ. NO. DAKO 575291