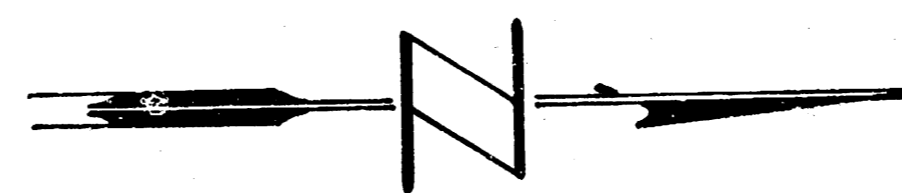


CURVE DATA: 6° offset Ecb Sta 10+25.3 to Sta 11+01.48 L=190.28
Stationing on 8° offset Ecb Δ=22°42' Defl.=12.8706 min/ft arc.

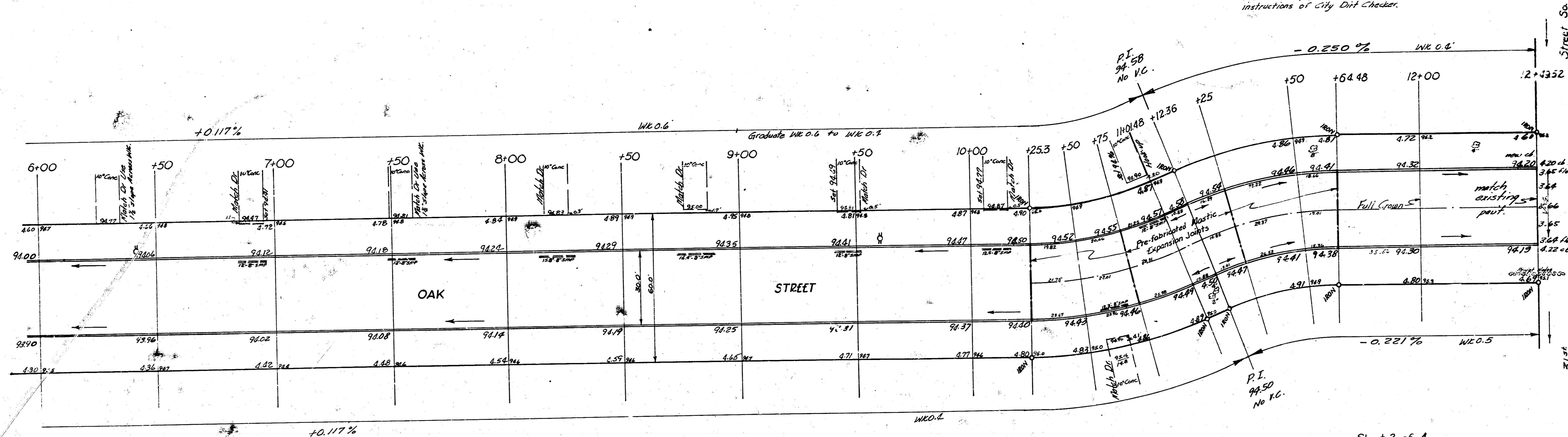
STATION	Arc Length 8° offset Ecb	Deflection Angle	Total Deflection	Chord Length 8° offset Ecb	Chord Length 6° offset Ecb
10+25.3					
+50	24.04	3° 40' 48"	3° 40' 48"	24.42	19.03
+75	28.74	3° 13' 30"	7° 24' 18"	24.72	19.84
11+01.48	26.20	3° 56' 42"	11° 21' 00"	26.18	20.40

CURVE DATA: 6° offset Ecb Sta 11+12.36 to Sta 11+64.48 L=133.55
Stationing on 8° offset Ecb Δ=22°42' Defl.=12.8706 min/ft arc.

STATION	Arc Length 8° offset Ecb	Deflection Angle	Total Deflection	Chord Length 8° offset Ecb	Chord Length 6° offset Ecb
11+12.36					
+25	12.83	2° 05' 08"	2° 05' 08"	12.88	10.26
+50	25.28	5° 26' 40"	8° 11' 38"	25.31	20.27
11+64.48	14.70	3° 09' 12"	11° 21' 00"	14.69	19.21



NOTICE TO CONTRACTOR:-
 Use Pre-fabricated Mastic Joints at Sta. 10+25.3, 10+75, 11+25,
 and 11+64.48 as shown on plan.
 All entrance pipes are to be disposed of in accordance with
 instructions of City Dirt Checker.



Sheet 2 of 4.

OAK STREET
 NL 33' to SL 31'
 PROJ NO. C15-212