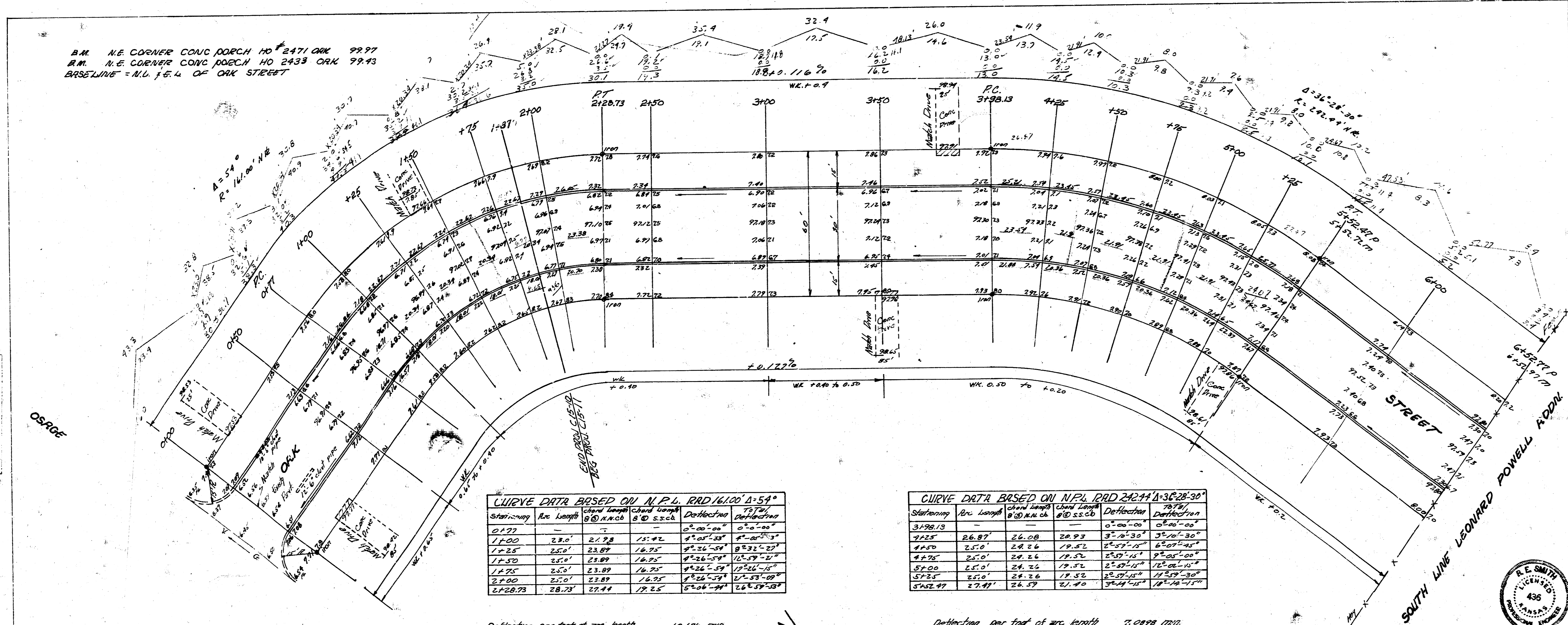


B.M. N.E. CORNER CONC JOECH NO 2471 OAK 99.97
 B.M. N.E. CORNER CONC JOECH NO 2433 OAK 99.43
 BASELINE = N.W. 1/4 OF OAK STREET



CURVE DATA BASED ON N.P.L. RRD 16100' Δ=54°

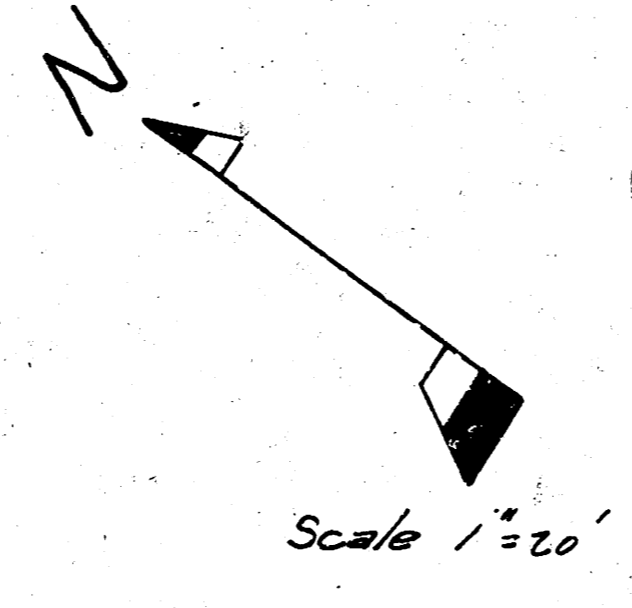
Stationing	Arc Length	Chord Length @ 10' H.C.	Chord Length @ 5' S.C.	Deflection	Deflection
0+00	2.50'	2.49'	1.25'	0°00'00"	0°00'00"
1+00	2.50'	2.49'	1.25'	0°26'54"	0°53'48"
1+25	2.50'	2.49'	1.25'	0°53'48"	1°20'42"
1+50	2.50'	2.49'	1.25'	1°20'42"	1°47'36"
1+75	2.50'	2.49'	1.25'	1°47'36"	2°14'30"
2+00	2.50'	2.49'	1.25'	2°14'30"	2°41'24"
2+25.73	28.73'	27.44'	13.72'	5°00'00"	25°00'00"

CURVE DATA BASED ON N.P.L. RRD 24244' Δ=38°28'30"

Stationing	Arc Length	Chord Length @ 10' H.C.	Chord Length @ 5' S.C.	Deflection	Deflection
3+28.13	-	-	-	0°00'00"	0°00'00"
4+25	26.87'	26.08'	13.04'	3°00'00"	6°00'00"
4+50	25.00'	24.26'	12.13'	3°00'00"	6°00'00"
4+75	25.00'	24.26'	12.13'	3°00'00"	6°00'00"
5+00	25.00'	24.26'	12.13'	3°00'00"	6°00'00"
5+25	25.00'	24.26'	12.13'	3°00'00"	6°00'00"
5+52.97	27.97'	26.27'	13.14'	3°00'00"	6°00'00"

EXCAVATION
 CITY PROP 990.4
 + 10% 99.0
 TOTAL 1089.4

Note: To Contractor's Field Engineer. All entrance pipes to be disposed of in accordance with City Dirt Checker.



OAK STREET
 E.L. OSAGE to E.L. LOT 5 BLOCK 4 of LEONARD POWELL ADDN.
 30 CONC. # CB.
 CITY OF WICHITA, KANSAS
 B. E. SMITH CITY ENGINEER
 AUG. 1958 PROJ. NO. C15-10

