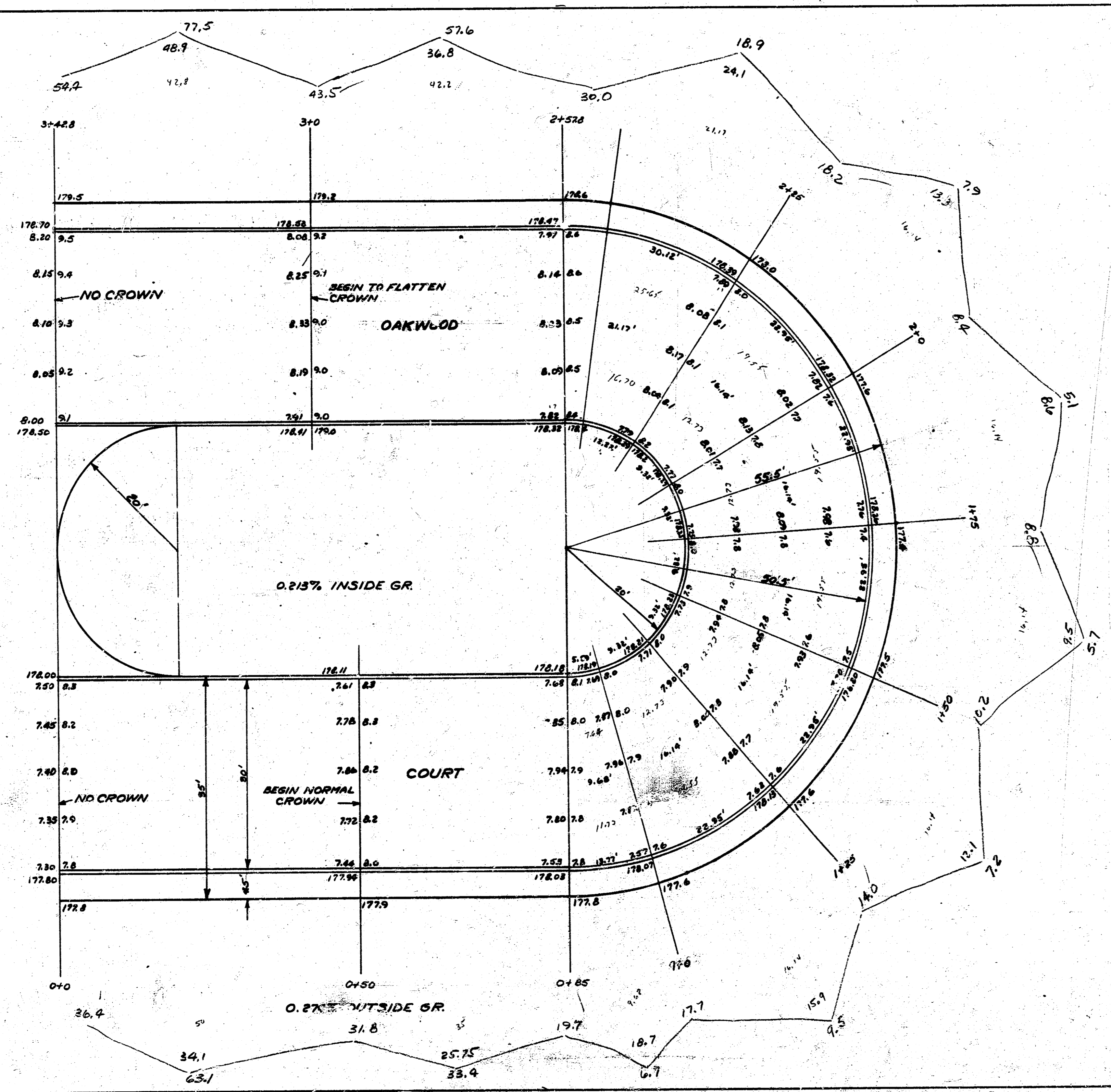


B.M. 179.41 6 IN GLOBE W. CB. EDMORE S.L. 2<sup>ND</sup> ST.

NOTE: STATIONING IS ON PROPERTY LINE.  
GRADE PERCENTAGES FIGURED ON CURB LINE DIST.



PROPERTY

63.1
33.4
6.7
9.5
7.2
5.7
5.1
7.9
18.9
57.6
77.5
292.6
+10% 29.3
321.9

147 cur. city  
173.9 on pt. prop.

SCALE: 1"=10'-0"

**OAKWOOD CT.**  
30' CONC. & CB.  
CITY OF WICHITA, KANS.  
ENGINEERING DIVISION  
L.K. WHITE CITY ENGINEER  
JULY 1907