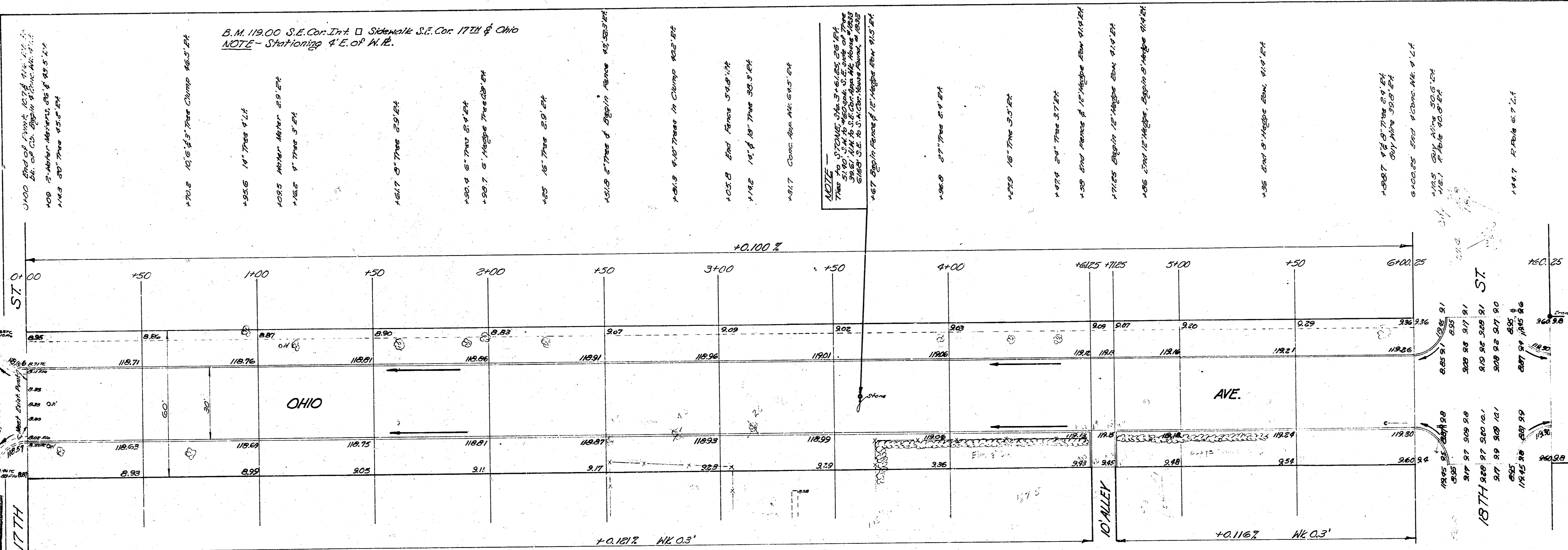
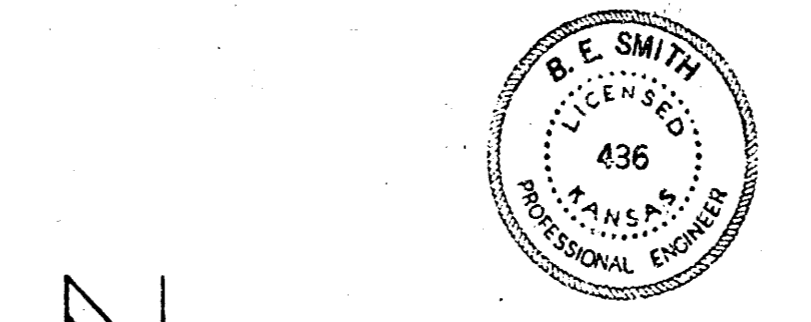


Surveyed by  
 B.H. 4-23  
 Inc. L.S.  
 Checked



Prop.	City
197.9	91.4
+10% 19.8	+10% 8.1
Total 217.7 cu/yds.	Total 99.5 cu/yds.

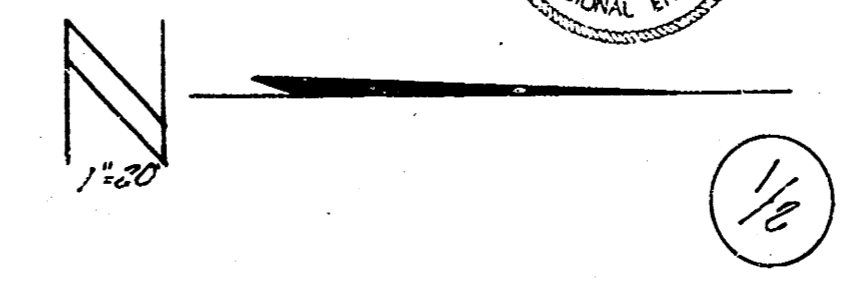


OHIO AVE.  
 N.L. 17TH ST. TO N.L. 18TH ST.  
 30' CONC. & C.B.

CITY OF WICHITA, KAN.

B. E. SMITH  
 Dec. 1952

CITY ENGINEER  
 PROJ. NO. CIP-91



NOTE -  
 TIME TO STONE 1/2" x 3/4" x 24" 25' EA.  
 25' x 1/2" x 3/4" x 24" 25' EA.  
 25' x 1/2" x 3/4" x 24" 25' EA.  
 25' x 1/2" x 3/4" x 24" 25' EA.  
 25' x 1/2" x 3/4" x 24" 25' EA.